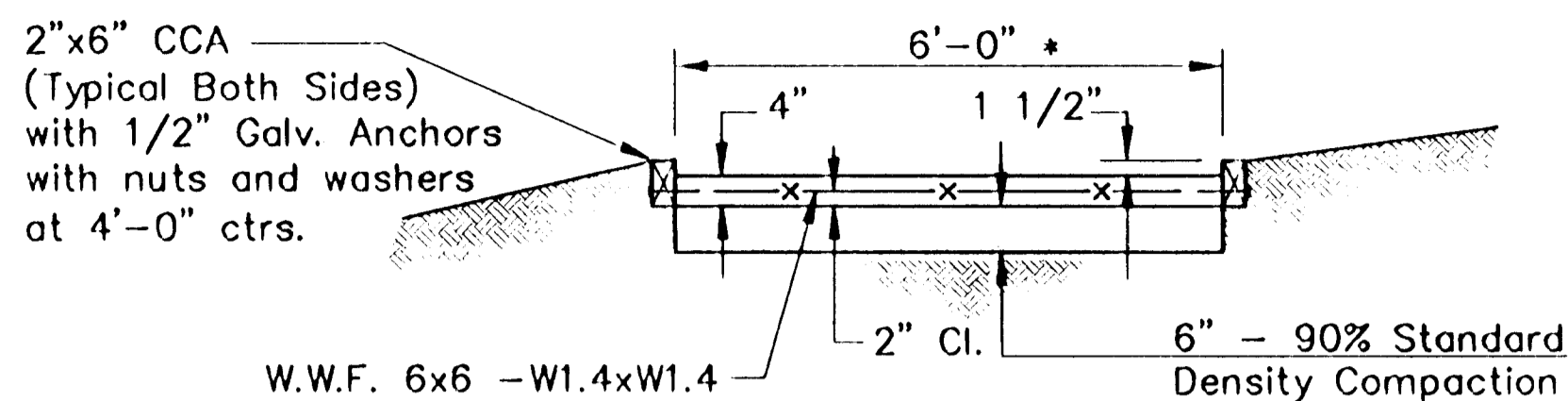


- Point #1  
 1. 1/2" Bar and Cap 350' East of S 1/4 Cor., Sec.32., T27S, R1W  
 2. Center SSMH  
 3. Nail and Shiner in Elm Tree  
 4. Nail and Shiner in Hedgetree

- Point #3  
 1. 1/2" Bar and Cap 300' West of Barricade at W. End of Bridge  
 2. Center SSMH  
 3. Property Corner  
 4. Nail and Shiner in Tree

63.4' S.S.W.  
 40.3' S.E.  
 45.0' N.W.

16.2' W.  
 63.5' S.E.  
 30.3' N.



**TYPICAL CONCRETE WALK**

\* Transition to 10'-0" width at low water crossing

Approximately 885' of additional sidewalk 6' wide x 4" thickness shall be constructed westward to a park shelter (not shown) from the point of beginning shown. The alignment will be determined by the Park Department. The contractor shall be responsible for the coordination with Park Department personnel as to the location, installation, underground and above ground utility location, access roadways, and other associated items of installation. The sidewalk shall be constructed as shown on this plan with the exception of 2"x6" CCA at sides of sidewalk. Grades shall not exceed 16:1.

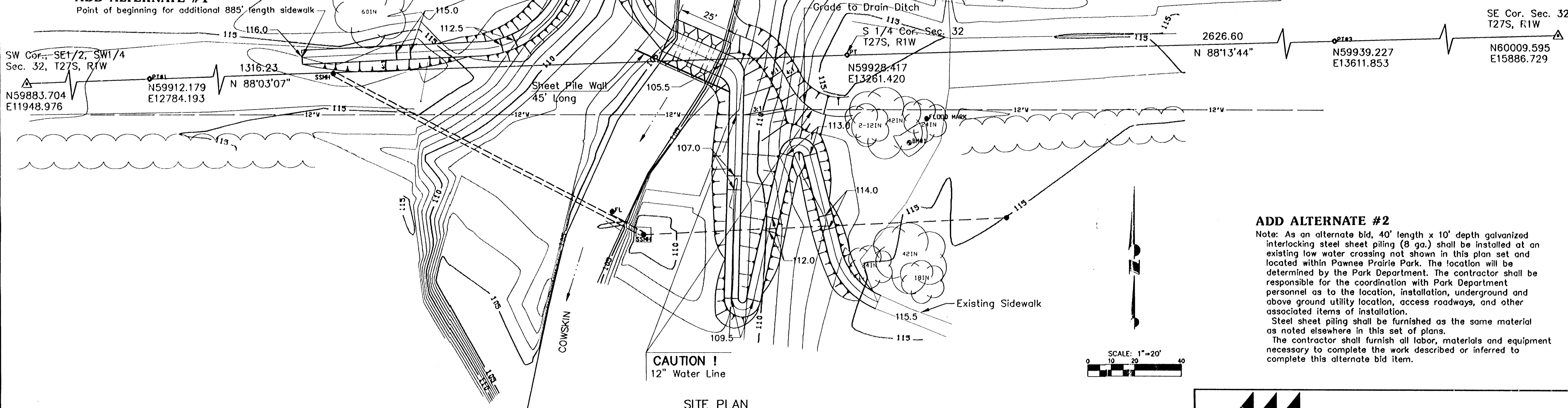
**ADD ALTERNATE #1**

Point of beginning for additional 885' length sidewalk

SW Cor., SE 1/2, SW 1/4  
 Sec. 32, T27S, R1W  
 N59883.704  
 E11948.976

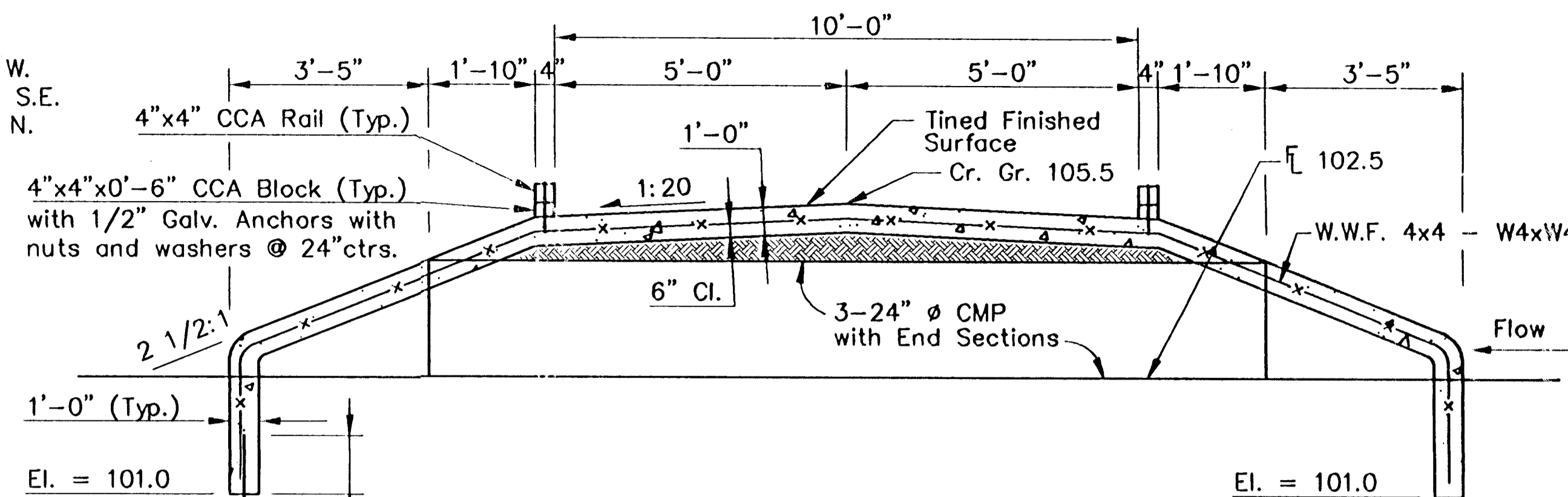
N59912.179  
 E12784.193  
 N 88°03'07"

1316.23



**CAUTION !**  
 12" Water Line

**SITE PLAN**



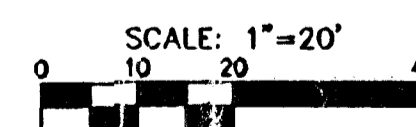
**TYPICAL SECTION AT LOW WATER CROSSING**

**GENERAL NOTES:**

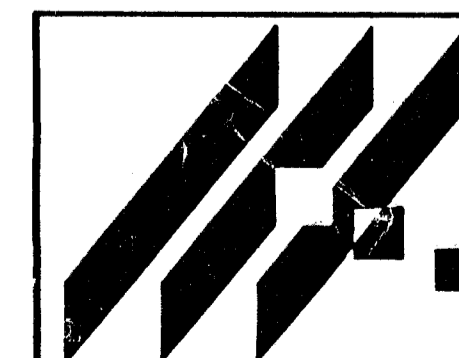
- Concrete.** The concrete used throughout the structure shall be the concrete paving mix for the City of Wichita (fc(min.) = 4,000 psi). The concrete shall have a minimum age of 14 days prior to vehicular traffic.
- Reinforcing.** The reinforcing used throughout shall conform to ASTM A615, Grade 40 or Grade 60. All bending and placing shall conform to the "Manual of Standard Practice", Concrete Reinforcing Steel Institute.
- Sheet Piling.** Steel sheet piling shall be furnished with a positive interlock running the full length of the sheets. Thickness shall be 8 gauge. Steel used in fabrication shall conform to ASTM A525 or A569. Galvanizing shall conform to ASTM A123. A minimum coating shall be 2 ounces per square foot total for both sides.

**ADD ALTERNATE #2**

Note: As an alternate bid, 40' length x 10' depth galvanized interlocking steel sheet piling (8 ga.) shall be installed at an existing low water crossing not shown in this plan set and located within Pawnee Prairie Park. The location will be determined by the Park Department. The contractor shall be responsible for the coordination with Park Department personnel as to the location, installation, underground and above ground utility location, access roadways, and other associated items of installation. Steel sheet piling shall be furnished as the same material as noted elsewhere in this set of plans. The contractor shall furnish all labor, materials and equipment necessary to complete the work described or inferred to complete this alternate bid item.



BM #1 City of Wichita Disk. 38' S. and 24' E. of 1/4 Sec. Cor. 56.4' N.W. of Manhole. 116± N.E. of N.E. corner concrete Manhole. Elev. = 113.69



MID-KANSAS ENGINEERING CONSULTANTS, INC.  
 411 N. WEBB ROAD  
 WICHITA, K.S. 67206  
 316-684-9600

**PAWNEE PRAIRIE PARK**  
 PROJECT NAME

**LOW WATER CROSSING**  
 SHEET TITLE

DESIGN BY:	ADL, KLH	CHECKED BY:	KJS
DATE:	3-29-95	JOB NO.:	34146-113