

**GENERAL NOTES**

- THE CONTRACTOR SHALL COMPLY WITH ALL APPLICABLE SAFETY REGULATIONS. ALL CONSTRUCTION SHALL BE COMPLETED FOLLOWING CURRENT CITY STANDARDS SPECIFICATIONS AND SPECIAL PROVISIONS.
- CONTRACTOR WILL BE REQUIRED TO PROVIDE NOTICE TO UTILITY COMPANIES A MINIMUM OF SEVENTY-TWO (72) HOURS PRIOR TO AND EXCAVATION, AS FOLLOWS:  
  
KANSAS ONE-CALL 687-2470  
  
THE CONTRACTOR MUST NOTIFY THE FOLLOWING IN CASE OF AN EMERGENCY:  
  
AT&T 1-800-246-8464  
BLACK HILLS ENERGY 1-800-694-8989  
CITY OF WICHITA WATER & SEWER 1-316-219-8921  
CITY OF WICHITA STORMWATER 1-316-268-4090  
CITY OF WICHITA TRAFFIC 1-316-268-4034  
COX COMMUNICATIONS 1-888-249-3530  
KANSAS GAS SERVICE 1-888-462-4950  
ENERGY 1-800-544-4857
- UTILITY SERVICE LINES, POLES, ETC. ARE TO BE ADJUSTED AS NECESSARY BY OTHERS PRIOR TO CONSTRUCTION UNLESS THE PLANS SPECIFICALLY CALL FOR THEIR ADJUSTMENT BY THE CONTRACTOR OR UNLESS THE PLANS SPECIFICALLY IDENTIFY A UTILITY TO BE ADJUSTED BY ITS OWNER DURING CONSTRUCTION. EXISTING UTILITIES AND THEIR LOCATION, AS SHOWN ON THE PLANS, REPRESENT THE BEST INFORMATION OBTAINABLE FOR DESIGN. THE CONTRACTOR WILL BE REQUIRED TO WORK AROUND EXISTING UTILITIES WITHIN THE RIGHT-OF-WAY WHICH DO NOT CONFLICT WITH PROPOSED CONSTRUCTION.
- RUBBLE FROM THE REMOVAL OF MISCELLANEOUS STRUCTURES AND EXCESS EXCAVATION WHICH IS TO BE WASTED SHALL BE DISPOSED OF ON SITES TO BE PROVIDED BY THE CONTRACTOR. THESE SITES SHALL BE APPROVED BY THE ENGINEER AS TO SUITABILITY, APPEARANCE AND SITE LOCATION. LOCATIONS, IN THE OPINION OF THE ENGINEER, THAT WILL LEAVE AN UNSIGHTLY APPEARANCE WILL NOT BE APPROVED. ALL DISPOSAL SITES MUST BE APPROVED BY THE KANSAS DEPARTMENT OF HEALTH AND ENVIRONMENT. MATERIAL EITHER STOCKPILED OR DISPOSED OF IN A FLOOD PLAIN WILL REQUIRE A KANSAS STATE BOARD OF AGRICULTURE PERMIT. ANY MATERIAL DUMPED IN WATERS OF THE UNITED STATES OR WETLANDS IS SUBJECT TO U.S. CORPS. OF ENGINEERS PERMITTING REGULATIONS. ANY MATERIAL BURIED OR STOCKPILED BEYOND APPROVED CONSTRUCTION LIMITS WILL REQUIRE ADDITIONAL ARCHAEOLOGICAL INVESTIGATIONS UNLESS BURIED IN A PREVIOUSLY APPROVED BORROW LOCATION.
- TREES AND SHRUBS IN PUBLIC RIGHT-OF-WAY WHICH ARE IN DIRECT CONFLICT WITH PROPOSED NEW CONSTRUCTION SHALL BE REMOVED BY THE CONTRACTOR WITH THE CITY ENGINEER'S APPROVAL. TREES AND SHRUBS WHICH ARE NOT IN DIRECT CONFLICT WITH PROPOSED NEW CONSTRUCTION SHALL BE SAVED AND PROTECTED FROM DAMAGE.
- THE CONTRACTOR SHALL GIVE ALL PROPERTY OWNERS AND/OR TENANTS OF DEVELOPED PROPERTY NOTICE OF THE CONSTRUCTION OF THIS PROJECT A MINIMUM OF TEN (10) DAYS NOTICE PRIOR TO START OF CONSTRUCTION.
- THE CONTRACTOR SHALL BE RESPONSIBLE FOR PRESERVING PROPERTY IRONS. THE CONTRACTOR SHALL BE RESPONSIBLE TO RE-ESTABLISH ANY PROPERTY IRONS WHICH ARE DAMAGED OR DESTROYED BY THIS CONSTRUCTION OPERATIONS. SUCH IRONS SHALL BE RE-ESTABLISHED BY A LICENSED LAND SURVEYOR IN ACCORDANCE WITH STATE LAWS.
- THE ENGINEERING DIVISION SHALL FIELD LOCATE WATER VALVES ONE TIME DURING CONSTRUCTION WHEN REQUESTED BY THE CONTRACTOR. IT SHALL BE THE CONTRACTOR'S RESPONSIBILITY TO PRESERVE SUCH FIELD LOCATIONS DURING THE CONSTRUCTION PROCESS. WATER VALVES, VALVE BOXES OR FIRE HYDRANTS DAMAGED DURING CONSTRUCTION SHALL BE REPAIRED BY CONTRACTOR AT HIS OWN EXPENSE. VALVE BOXES AND WATER METERS WITHIN THE PROJECT LIMITS SHALL BE ADJUSTED TO MATCH FINAL GRADES BY THE CONTRACTOR.
- THE CONTRACTOR SHALL NOTIFY THE INSPECTING ENGINEER AND DAWNITA REINHARDT AT 316-268-4574 WITH THE CITY OF WICHITA WITH THE ANTICIPATED CONSTRUCTION START DATE AND NOTIFY THEM OF PROJECT COMPLETION. STAKING AND INSPECTION OF THIS PROJECT WILL BE THE RESPONSIBILITY OF THE CONTRACTOR.
- IF TRAFFIC WILL BE IMPACTED BY CONSTRUCTION, A TRAFFIC CONTROL PLAN MUST BE SUBMITTED AND APPROVED BY THE CITY TRAFFIC ENGINEER, MIKE ARMOUR AT [traffic@wichita.gov](mailto:traffic@wichita.gov) BEFORE CONSTRUCTION CAN BEGIN. THE CONTRACTOR SHALL BE RESPONSIBLE FOR ALL TRAFFIC CONTROL MEASURES TO FACILITATE CONSTRUCTION. ALL CONSTRUCTION ZONE MARKINGS AND SIGNAGE SHALL CONFORM TO THE LATEST VERSION OF THE MANUAL ON UNIFORM TRAFFIC CONTROL DEVICES (MUTCD) AS PUBLISHED BY THE U.S. DEPT. OF TRANSPORTATION, FEDERAL HIGHWAY ADMINISTRATION. ALL COSTS ASSOCIATED WITH CONSTRUCTION MARKINGS AND SIGNAGE SHALL BE THE CONTRACTOR'S RESPONSIBILITY.
- ALL ELEVATIONS SHOWN ARE NAVD 88.
- ALL AREAS DISTURBED DURING CONSTRUCTION THAT WILL NOT BE UNDER PROPOSED PAVEMENT SHALL BE RESTORED TO MATCH EXISTING CONDITIONS.
- ANY SIDEWALK, DRIVE APPROACH, CURB, OR STREET PAVEMENT REMOVED TO CONSTRUCT PROJECT MUST HAVE A PERMIT AND BE REPLACED BY THE CITY CONTRACTOR. PERMITS CAN BE OBTAINED BY CALLING 316-268-4501 OR 316-268-4480.
- ALL APPLICABLE FEES (TAP, EQUITY, IN LIEU OF & MAIN BENEFIT) MUST BE PAID FOR BEFORE ANY CONSTRUCTIONS CAN BE MADE ON THIS PROJECT. QUOTES CAN BE OBTAINED ON FEES BY CALLING 316-268-4555.
- CITY MAINTENANCE OF WATER MAINS ENDS AT RIGHT-OF-WAY OR EASEMENT LINE OR WITHIN TWO FEET OF VAULT.
- OPENING AND CLOSING OF WATER VALVES SHALL BE DONE SLOWLY TO PREVENT DAMAGE TO THE WATER DISTRIBUTION SYSTEM FROM WATER HAMMER. ALL VALVES CLOSED BY THE CONTRACTOR MUST BE REOPENED AS NEW CONSTRUCTION PERMITS. THE PROJECT INSPECTOR MUST ASCERTAIN THAT ANY VALVE CLOSED BY THE CONTRACTOR IS REOPENED. THE CONTRACTOR WILL BE PERMITTED TO OPERATE WATER VALVE ONLY WHEN THE PROJECT INSPECTOR ASSIGNED TO THE PROJECT IS PRESENT.
- THE CONTRACTOR SHALL LAY A TRACER WIRE AND SET TEST STATIONS ALONG ALL WATER PIPE INSTALLED IN ACCORDANCE WITH CITY SPECIFICATIONS AND TRACER WIRE DETAIL ON DETAIL SHEET WL-101, COST IS SUBSIDIARY TO PIPE INSTALLATION.
- THE CONTRACTOR SHALL PROVIDE MATERIALS FOR TEMPORARY BLOWOFF OF WATERLINES. CONNECTIONS TO THE EXISTING WATERLINE(S) SHALL BE MADE WITH CLEAN, SWABBED PIPE AND FLUSHED UPON COMPLETION OF TIE-INS.
- REQUESTS FOR SHORT TERM WATER INTERRUPTIONS SHALL BE MADE TO THE CITY WATER DISTRIBUTION DIVISION AND WILL BE MADE SUBJECT TO THEIR APPROVAL. THE CONTRACTOR SHALL GIVE WRITTEN NOTICE TO ANY PROPERTY OWNER, BUSINESS, AND/OR TENANTS THAT WILL HAVE WATER SERVICE INTERRUPTED AT LEAST 5 DAYS IN ADVANCE. SUCH NOTIFICATIONS SHOULD INDICATE THE TIME AND DATE THAT THE WATER WILL BE TURNED OFF AND WHEN THE SERVICE WILL BE RESTORED. NO BUSINESS, PROPERTY OWNER, AND/OR TENANTS SHALL BE WITHOUT WATER SERVICE FOR MORE THAN 8 HOURS. PROPOSED TIE IN LOCATIONS WHICH WILL AFFECT WATER SERVICE TO PROPERTY OWNERS SHALL BE PERFORMED DURING NON-PEAK HOURS.
- THE CONTRACTOR MUST SCHEDULE THE CONNECTIONS TO THE EXISTING MAIN WITH THE CITY SUCH THAT THERE IS A MINIMUM DISRUPTION OF SERVICE. CONNECTIONS SHALL BE MADE DURING PERIODS OF LOW WATER USAGE. THE CONTRACTOR SHALL SUBMIT HIS PROPOSED SCHEDULE FOR COMPLETING WORK FOR CITY APPROVAL AT LEAST 10 DAYS PRIOR TO BEGINNING CONSTRUCTION.
- DEFLECTIONS AT PIPE JOINT OR COUPLINGS SHALL NOT EXCEED THE PIPE MANUFACTURERS MAXIMUM. WHERE DEFLECTIONS ARE GREATER THAN THE MAXIMUM ALLOWED, THE CONTRACTOR SHALL UTILIZE FITTINGS.
- ANY EXISTING JOINT EXPOSED DURING EXCAVATION SHALL BE REPLACED IF WITHIN FOUR FEET OF PROPOSED JOINT.
- VALVES 12 INCH AND LARGER ARE TO BE OPERATED BY THE CITY WATER DISTRIBUTION DIVISION. 48 HOURS OF ADVANCE NOTICE IS REQUIRED WITH THE WATER DISPATCH AT 316-291-8921.
- ALL WET TAPS SHALL BE INSTALLED BY THE CITY OF WICHITA. THE CONTRACTOR WILL REIMBURSE THE CITY FOR TAPPING FEES PRIOR TO TAP BEING MADE. UNLESS NOTED ON PLANS.
- THE CONTRACTOR SHALL PROTECT FROM DAMAGE AND SUPPORT EXISTING UTILITIES THROUGH CONSTRUCTION AS APPROVED BY THE UTILITY OWNER AND THE ENGINEER AT THE CONTRACTOR'S EXPENSE.
- CONTRACTOR SHALL LIMIT THE EXTENT OF TRENCH OPENINGS OVERNIGHT AND WEEKENDS TO LESS THAN 50 FEET.
- WICHITA FIRE DEPARTMENT INSPECTIONS MAY BE SCHEDULED BY CALLING 316-268-4441.

# WATER DISTRIBUTION SYSTEM

TO SERVE

# CLUB CARWASH

47TH ST. & S. BROADWAY AVE.  
CITY OF WICHITA, KANSAS

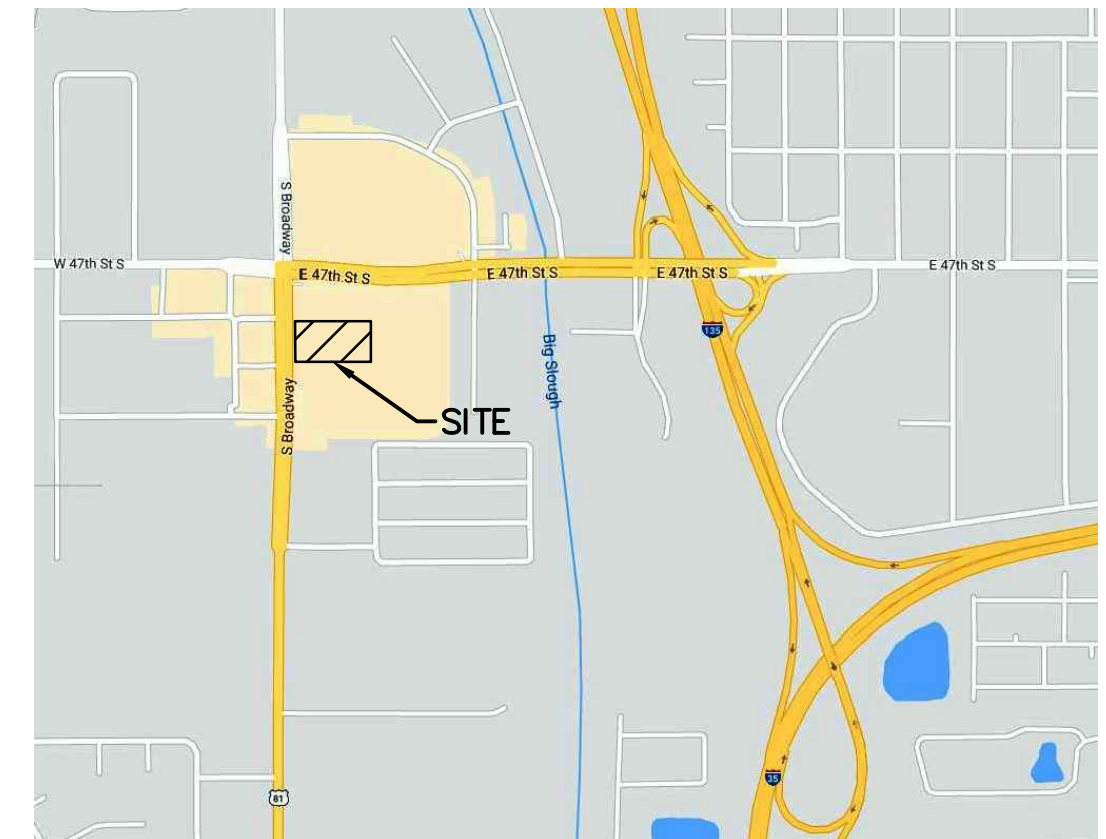
GARY JANZEN, P.E. CITY ENGINEER

PROJECT NUMBER

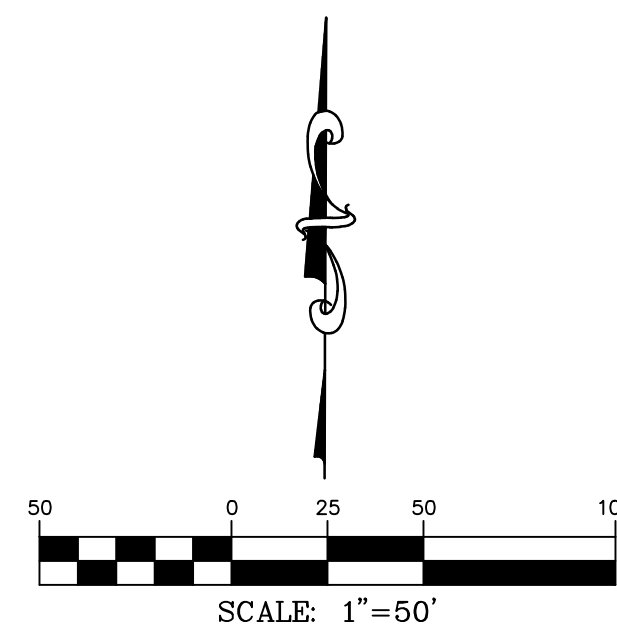
PPW-2020-028263 (183021)

AS BUILTS	
Contractor: Ewertz Excavation 3-19-21	Project Inspector: Larry Gann John Schuller <b>KEMILLER</b> ENGINEERING PA 117 E. Lewis, Wichita, KS 67202 (316)264-0242

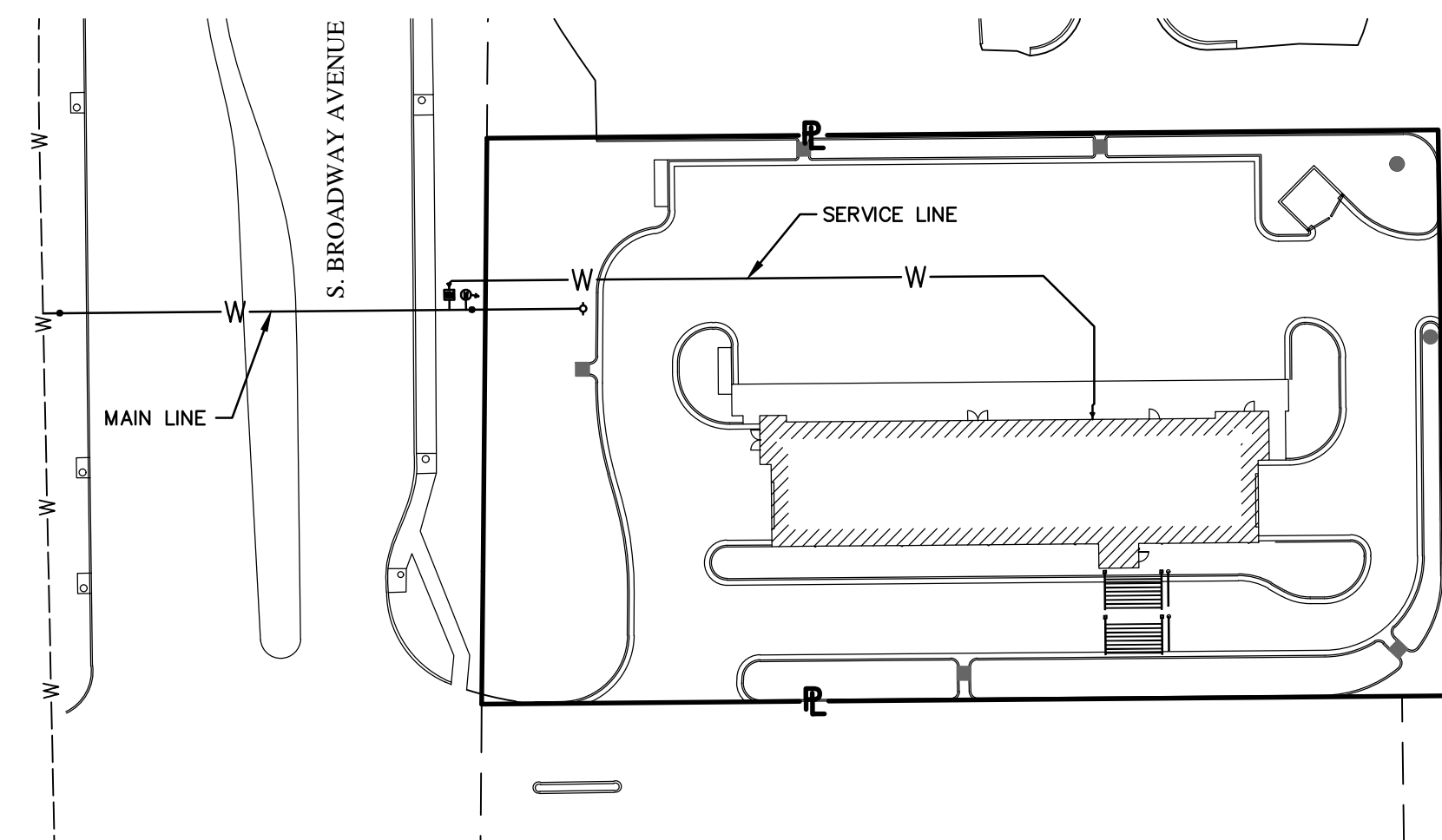
American Darline / Storz  
AWWA c900-16 8"PVC pipe  
Pro-trace wire  
Grimm-anoid  
8".6" and 4" MJ packs  
Union Tee  
Mueller valves



VICINITY MAP  
NO SCALE



SHEET INDEX	SHEET
SITE PLAN	1
PLAN AND PROFILE	2
EROSION CONTROL PLAN	3
DETAILS/SPECIFIC/EROSION CONTROL	4
DETAILS/SPECIFIC/EROSION CONTROL	5
DETAILS/SPECIFIC/EROSION CONTROL	6
DETAILS/SPECIFIC/EROSION CONTROL	7
DETAILS/SPECIFIC/EROSION CONTROL	8
DETAILS/SPECIFIC/EROSION CONTROL	9



**SEPTEMBER, 2020**

REVISED OCTOBER 26, 2020  
REVISED NOVEMBER 02, 2020



- CIVIL ENGINEERING
- LAND SURVEYING
- ARCHITECTURE
- SITE DEVELOPMENT
- MASTER PLANNING
- GENERAL CONSULTING

8 EAST MAIN STREET, WENTZVILLE, MISSOURI 63385  
TELEPHONE (636) 332-4574  
FAX (636) 327-0760  
E-MAIL [wentmail@cochraneng.com](mailto:wentmail@cochraneng.com)

APPROVED AS NOTED  
BY WICHITA PUBLIC WORKS  
ENGINEERING DIVISION  
& BY WICHITA FIRE DEPARTMENT

ENGINEERING SETH GOTCHEY 11-03-2020  
UTILITIES DEBRA ARY 11-03-2020  
FIRE DEPT. JOSE OCADIZ 11-03-2020

NOTE TO CONTRACTORS

PUBLIC PROPERTY:  
INSPECTION AND TESTING FOR THE WATERLINE IS TO BE PROVIDED BY A LICENSED CONSULTING ENGINEERING FIRM UNDER CONTRACT WITH THE OWNER/DEVELOPER. SAID INSPECTION IS TO BE IN ACCORDANCE WITH THE CITY OF WICHITA STANDARD CONSTRUCTION ENGINEERING PRACTICES AND CERTIFIED BY A PROFESSIONAL ENGINEER LICENSED IN THE STATE OF KANSAS. NO WORK SHALL BE PERFORMED IN DEDICATED EASEMENTS OR PUBLIC RIGHT-OF-WAY BY THE CONTRACTOR WITHOUT SUCH INSPECTION NOR SHALL ANY WORK BE COMMENCED WITHOUT WRITTEN AUTHORIZATION BY CITY ENGINEERING. ALL CONSTRUCTION AND MATERIALS SHALL COMPLY WITH THE CITY OF WICHITA SPECIFICATIONS AND STANDARDS AND SPECIAL PROVISION (ON FILE AND AVAILABLE IN THE CITY ENGINEER'S OFFICE) OR ON THE CITY'S WEBSITE.

PRIVATE PROPERTY:  
INSTALLATION AND TESTING FOR THE FIRE PROTECTION LINE IS TO BE PERFORMED BY A CITY OF WICHITA LICENSED FIRE PROTECTION CONTRACTOR IN ACCORDANCE WITH THE FIRE CODES AS ADOPTED BY THE CITY OF WICHITA. ALL MATERIAL AND CONSTRUCTION PRACTICES FOR THE FIRE PROTECTION LINE SHALL COMPLY WITH THE FIRE CODES AS ADOPTED BY THE CITY OF WICHITA (AVAILABLE FROM THE CITY OF WICHITA FIRE DEPARTMENT). THE CONTRACTOR SHALL NOT COMMENCE WORK WITHOUT NOTIFICATION AND APPROVAL OF THE WICHITA FIRE DEPARTMENT. INSPECTION OF THE FIRE PROTECTION LINE IS TO BE PROVIDED BY A LICENSED ENGINEERING FIRM UNDER CONTRACT WITH THE OWNER/DEVELOPER AND THE FIRE DEPARTMENT. THE CONTRACTOR SHALL NOT START WORK UNTIL THE PROJECT INSPECTOR IS ASSIGNED TO THE PROJECT AND PRESENT ON THE SITE. ANY WORK DONE WITHOUT INSPECTION WILL BE REQUIRED TO BE UNCOVERED FOR INSPECTION.

AN APPROVED COPY OF THESE PLANS SIGNED BY CITY STAFF ARE REQUIRED ON-SITE.



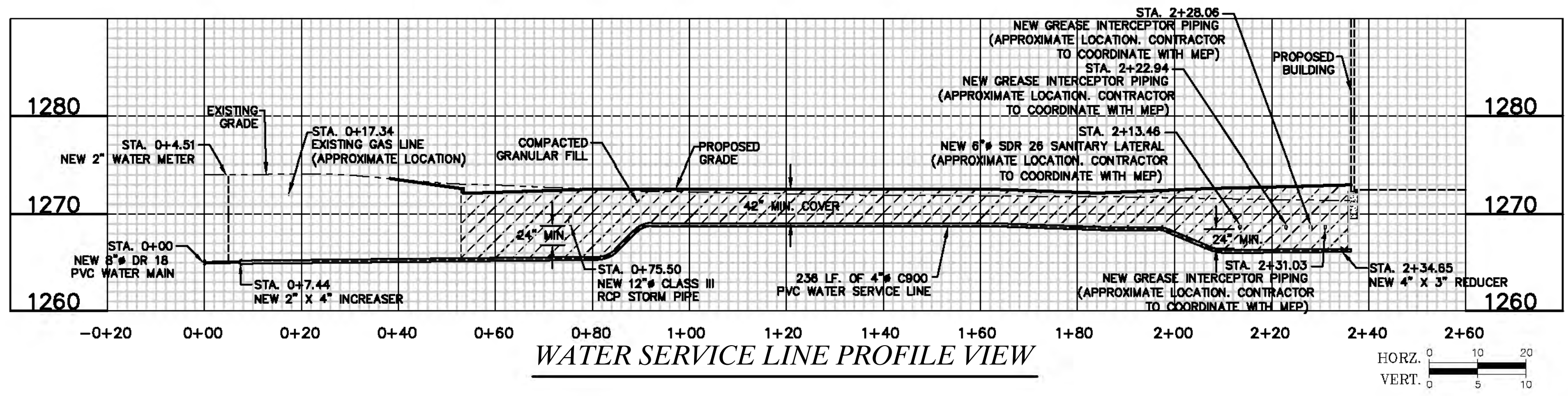
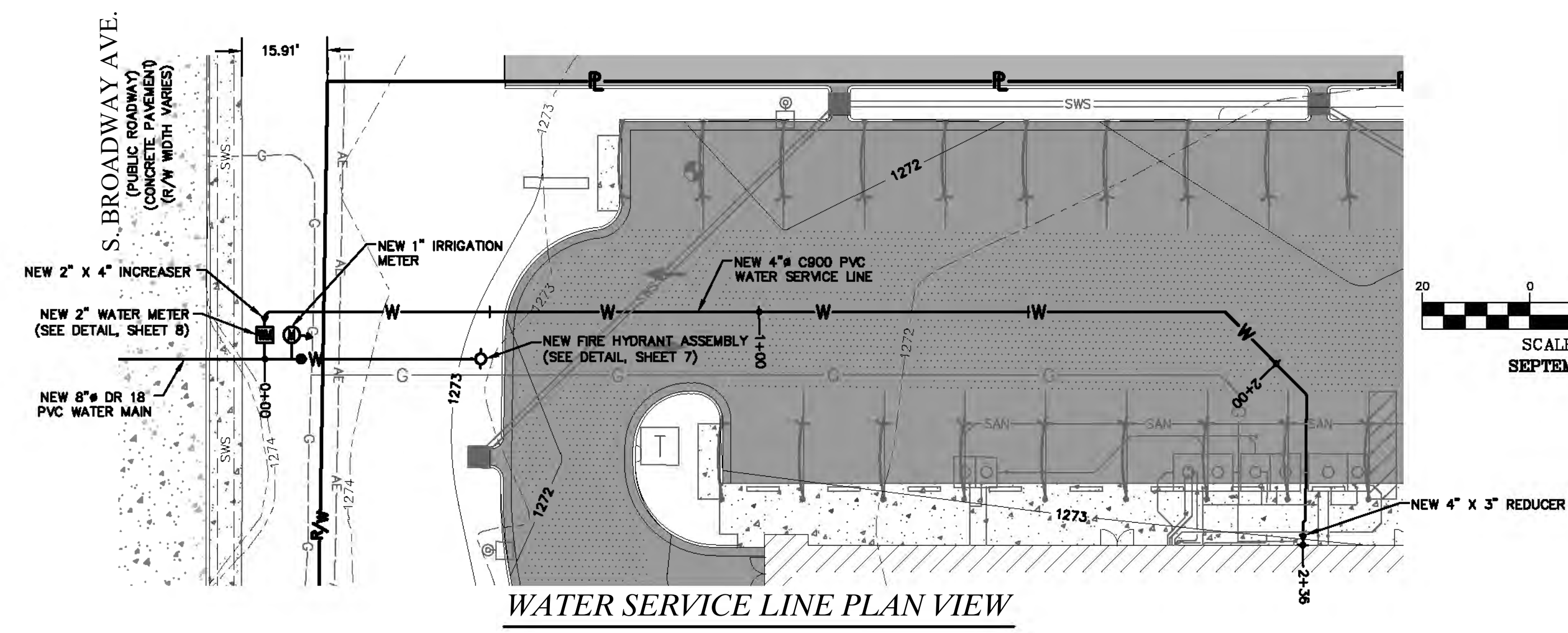
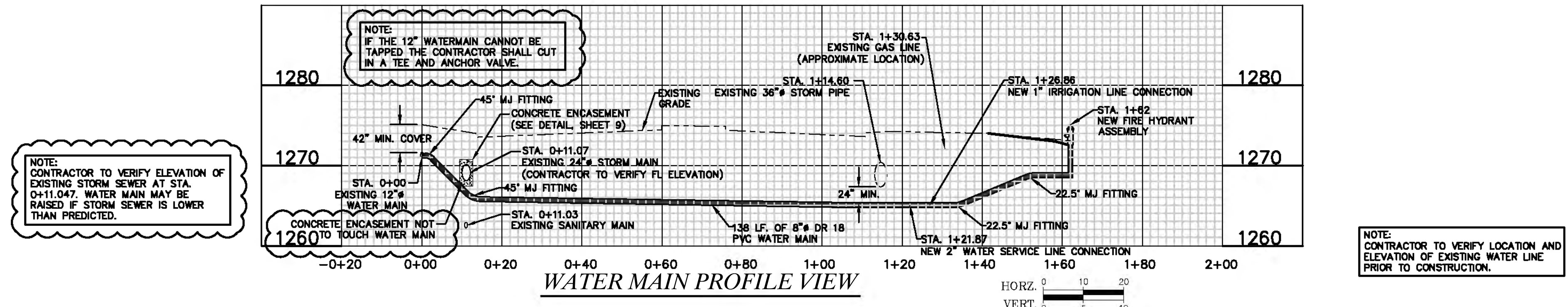
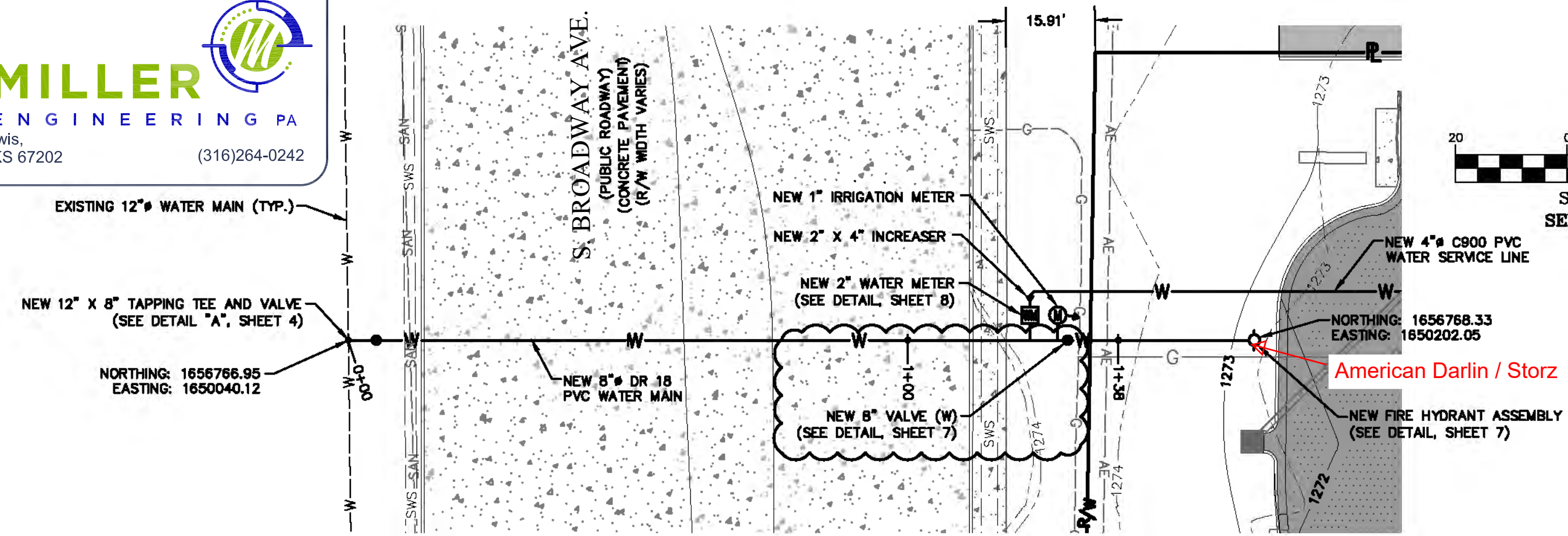


DWG NAME: J:\2020\200-7855 - CCW, 47th--Broadway, Wichita, KS\200-7855A - Civil Design\ENGINEERING\AUTOCAD DRAWINGS\03\_Construction Drawings\01\_WATER DISTRIBUTION SYSTEM PLANS\7855A\_2 - plan and profile.dwg LAYOUT TAB: 2 - plan and profile.dwg PLOTTED ON: Nov 03, 2020 @ 3:00pm PLOTTED BY: Echenbran

**AS BUILTS**

**KEMILLER ENGINEERING PA**  
117 E. Lewis, Wichita, KS 67202 (316)264-0242

# PLAN AND PROFILE



**AS BUILTS**

**KEMILLER ENGINEERING PA**  
117 E. Lewis, Wichita, KS 67202 (316)264-0242

**OWNER:**  
SCCI, LLC  
4911 S. MERIDIAN  
WICHITA, KS 67217

**DEVELOPER:**  
CLUB CARWASH OPERATING, LLC  
1213 OLD HWY 63, STE 101  
COLUMBIA, MO 65201



**COCHRAN**  
Civil Engineering  
Land Surveying  
Architecture  
Site Development  
General Consulting  
Master Planning

North Office  
8 East Main Street  
Wichita, Missouri 67305  
639-339-4574 (tel)  
639-327-0760 (fax)  
wcochrane@cochrane.com

Kansas State Certificate of Authority Number: E-2927

Two working days prior to the start of any excavation, call 1-800-485-SAFE (7233) for utility location information. All OSHA rules & regulations established for the type of work shall be strictly followed (ie. Trenching, Blasting, etc.)

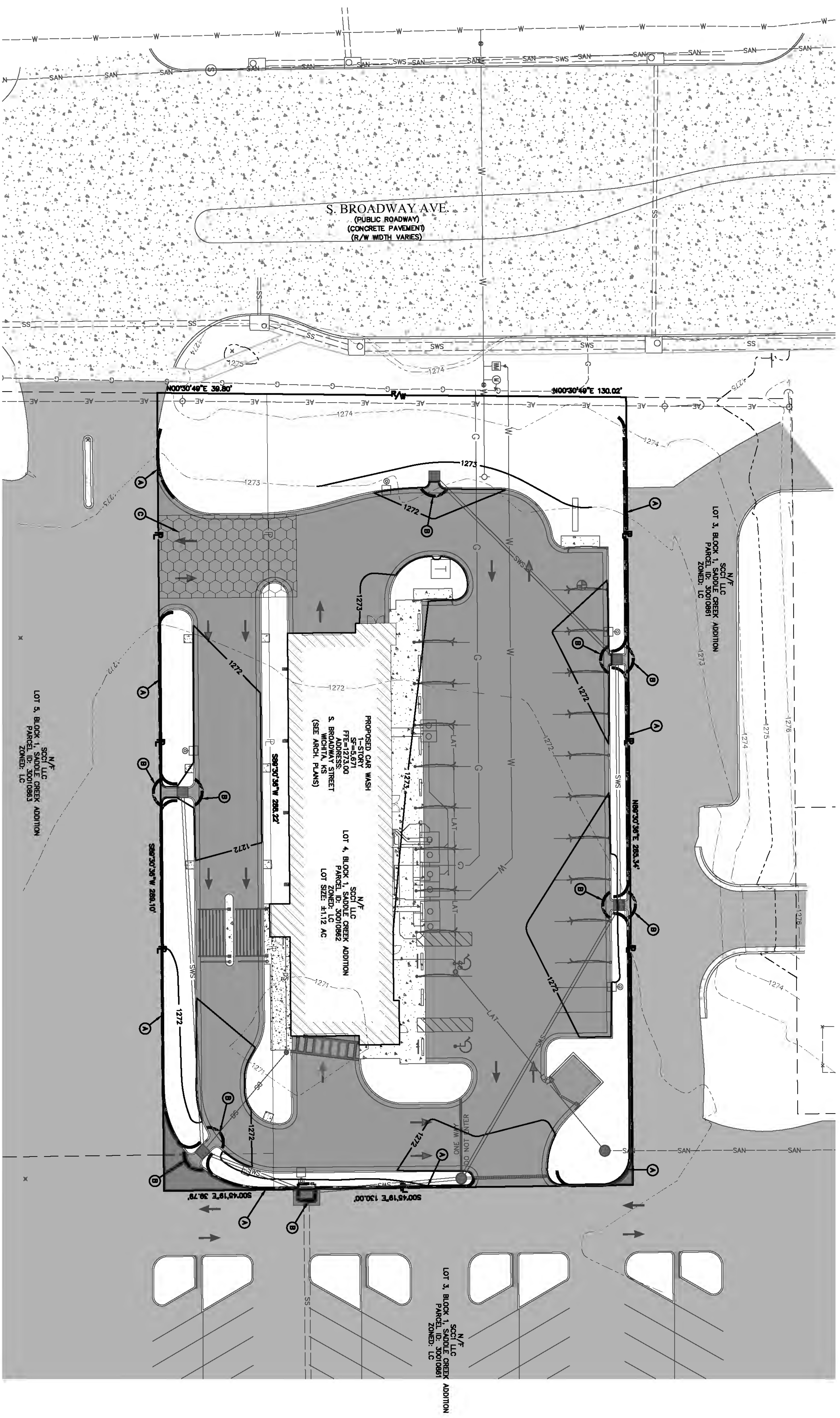
**KURTIS J. DANIELS**  
LICENSED PROFESSIONAL ENGINEER  
KANSAS  
E-26277

**WATER DISTRIBUTION SYSTEM  
CLUB CARWASH  
WICHITA, KANSAS**

**PLAN AND PROFILE**

DATE:	REVISION:
10/26/20 PER CITY COMMENTS	KJD
11/02/20 PER CITY COMMENTS	KJD
DATE:	REVISION:
NTB	KJD
DATE:	REVISION:
SEPT. 2020	
SCALE:	
1" = 20'	
1" = 10'	
PROJECT:	
PPW-2020-028263	
SHEET:	
2	

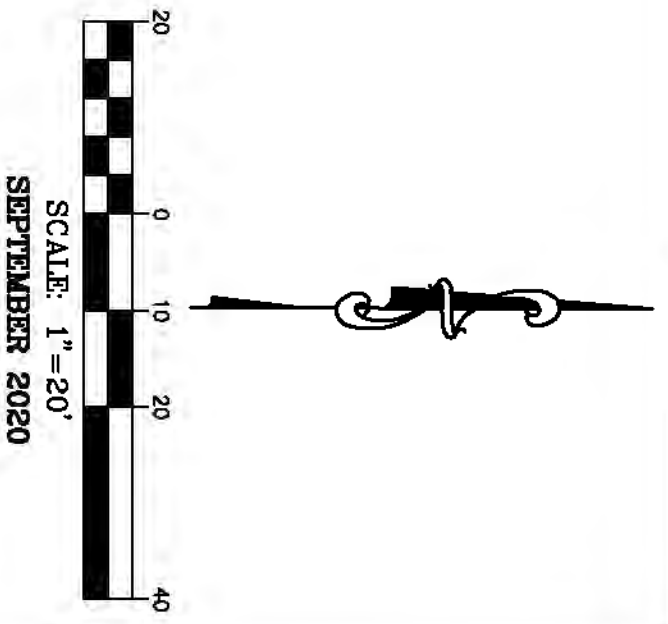
# EROSION CONTROL PLAN



**OWNER:**  
SCCI, LLC  
4911 S. MERIDIAN  
WICHITA, KS 67217

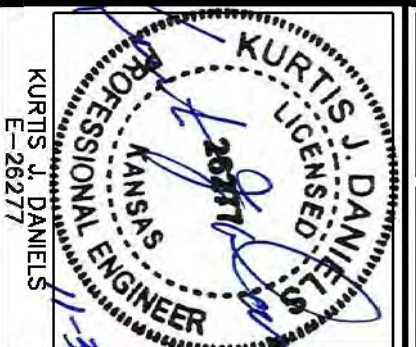
**DEVELOPER:**  
CLUB CARWASH OPERATING, LLC  
1213 OLD HWY 63, STE 101  
COLUMBIA, MO 65201

- SWPPP LEGEND**
- Ⓐ NEW SILT FENCE. SEE DETAIL SHEET A.
  - Ⓑ NEW INLET PROTECTION. SEE DETAIL SHEET B.
  - Ⓒ NEW CONSTRUCTION ENTRANCE. SEE DETAIL SHEET 5.



EROSION CONTROL PLAN		DWG. BY:	APP'D. BY:
DATE:	REVISION:		
NTB			
KJD			
SEPT. 2020			
1" = 20'			
FW-2020-028263			

**WATER DISTRIBUTION SYSTEM**  
**CLUB CARWASH**  
**WICHITA, KANSAS**



Two working days prior to the start of any excavation on this site, contractor shall call 1-800-DIG-SAFE for utility location information.

All OSHA rules & regulations established for the type of construction required by these plans shall be strictly followed (ie. Trenching, Blasting, etc.)

Kansas State Certificate #2927

North Office  
8 East Main Street  
Wentzville, Missouri 63385

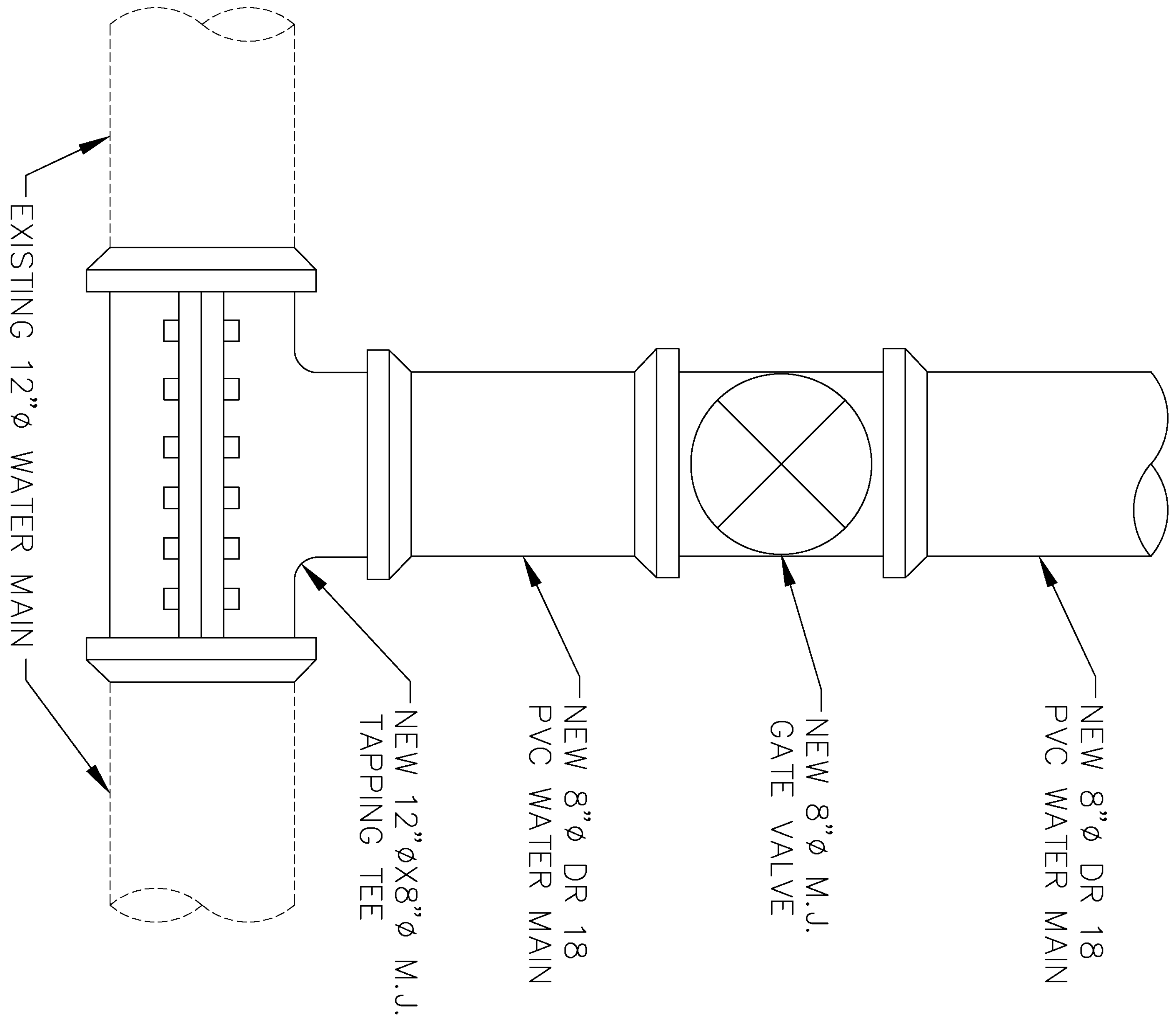
636-332-4574 (tel.)  
636-327-0760 (fax)  
wentzvil@oachraneng.com

- Civil Engineering
- Land Surveying
- Architecture
- Site Development
- General Consulting
- Master Planning

A B C D E F G H I J K

**OWNER:**  
SCCI, LLC  
4911 S. MERIDIAN  
WICHITA, KS 67217

**DEVELOPER:**  
CLUB CARWASH OPERATING, LLC  
1213 OLD HWY 63, STE 101  
COLUMBIA, MO 65201



**DETAIL "A"**  
NO SCALE

DATE		REVISION	DWG. BY:	APPD. BY:
NTB	KJD			
SEPT. 2020				
AS SHOWN				
PW-2020-028263				

**WATER DISTRIBUTION SYSTEM**  
**CLUB CARWASH**  
**WICHITA, KANSAS**



Two working days prior to the start of any excavation on this site, contractor shall call 1-800-DIG-SAFE for utility location information.

All OSHA rules & regulations established for the type of construction required by these plans shall be strictly followed (ie. Trenching, Blasting, etc.)

Kansas State Certificate #2927

North Office  
8 East Main Street  
Wentzville, Missouri 63385

636-332-4574 (tel.)  
636-327-0760 (fax)  
wentzvil@ochrane.com

- Civil Engineering
- Land Surveying
- Architecture
- Site Development
- General Consulting
- Master Planning

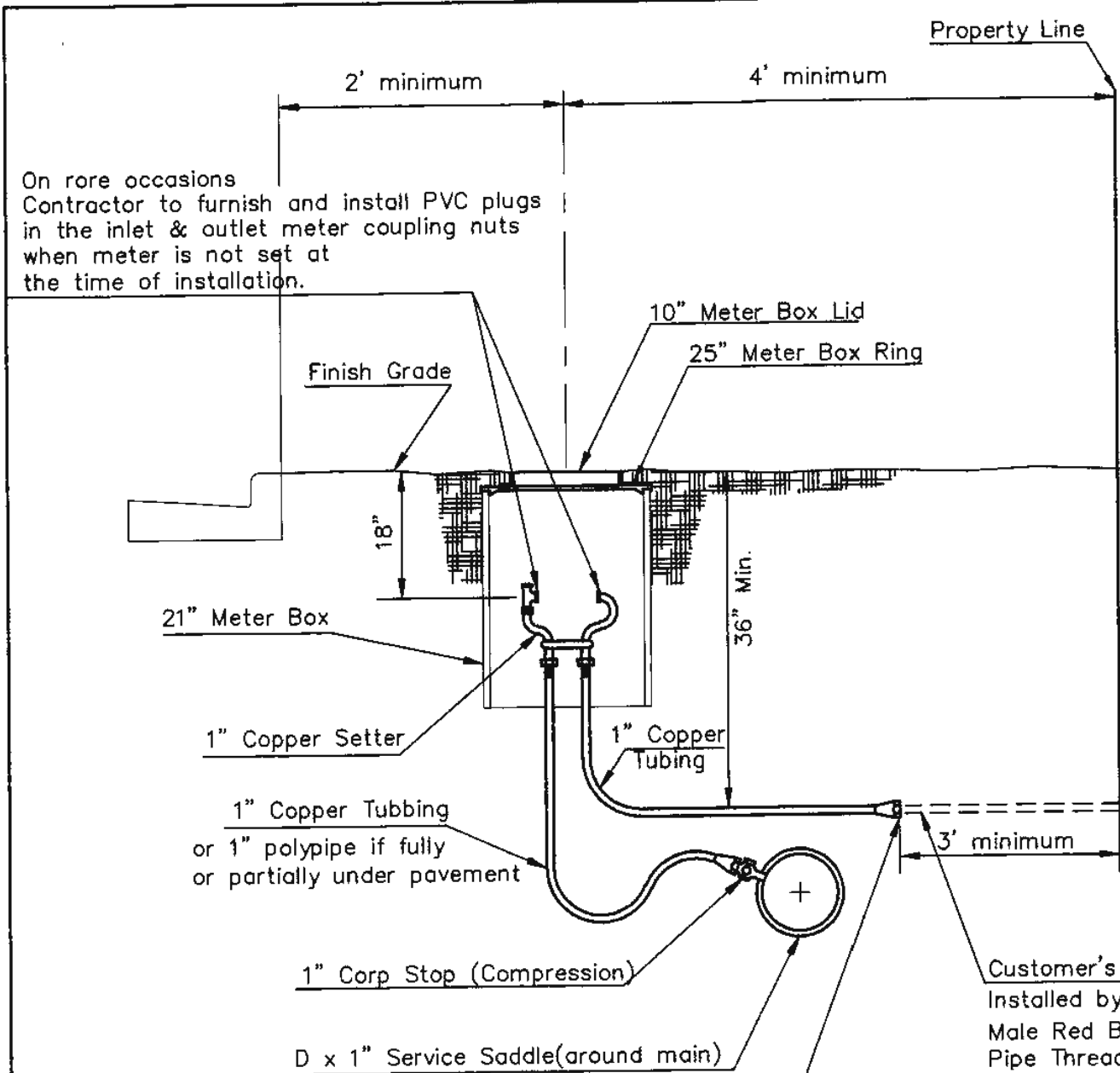


1 2 3 4 5 6 7 8 9 10 11 12 13 14 15 16 17



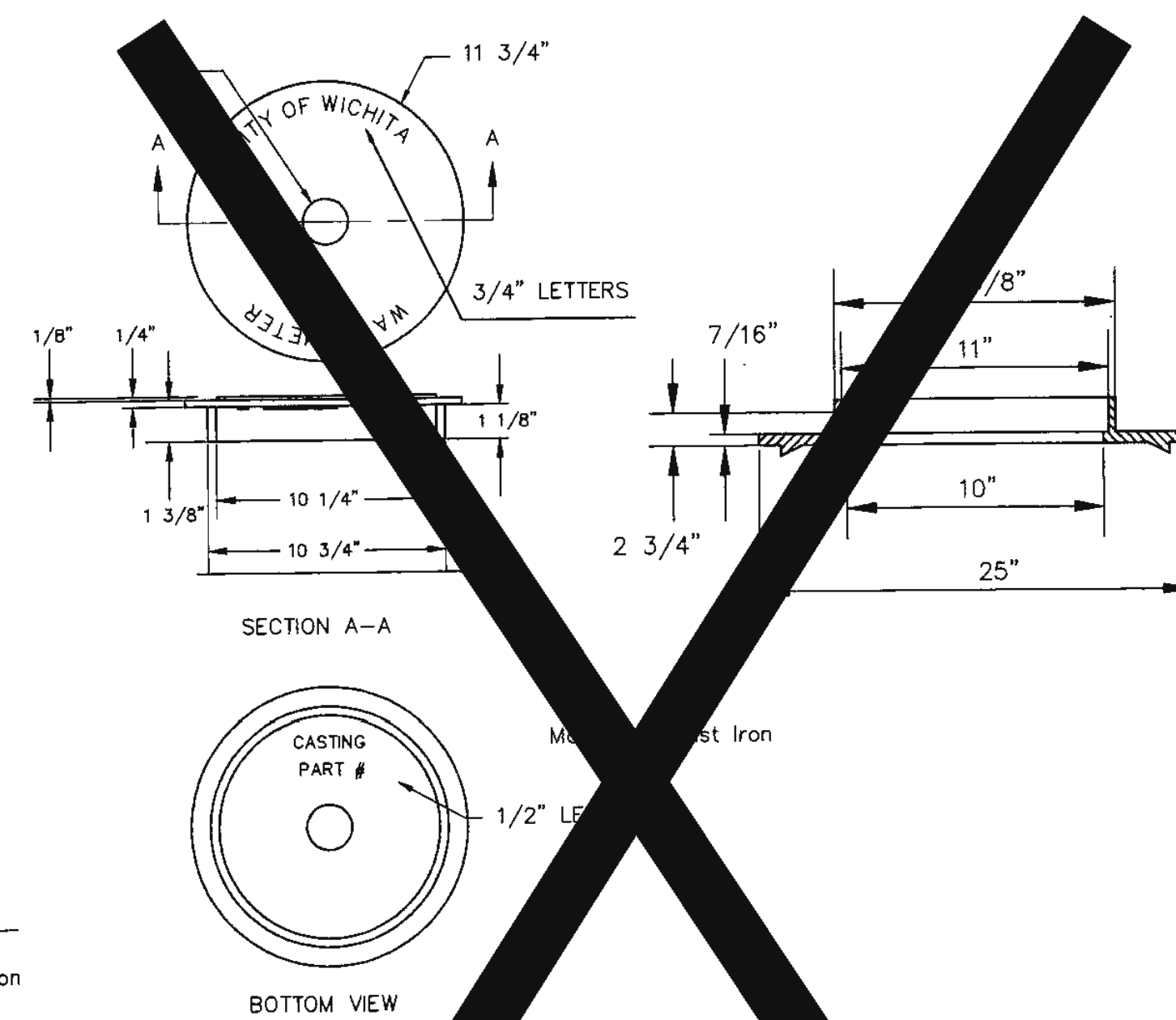






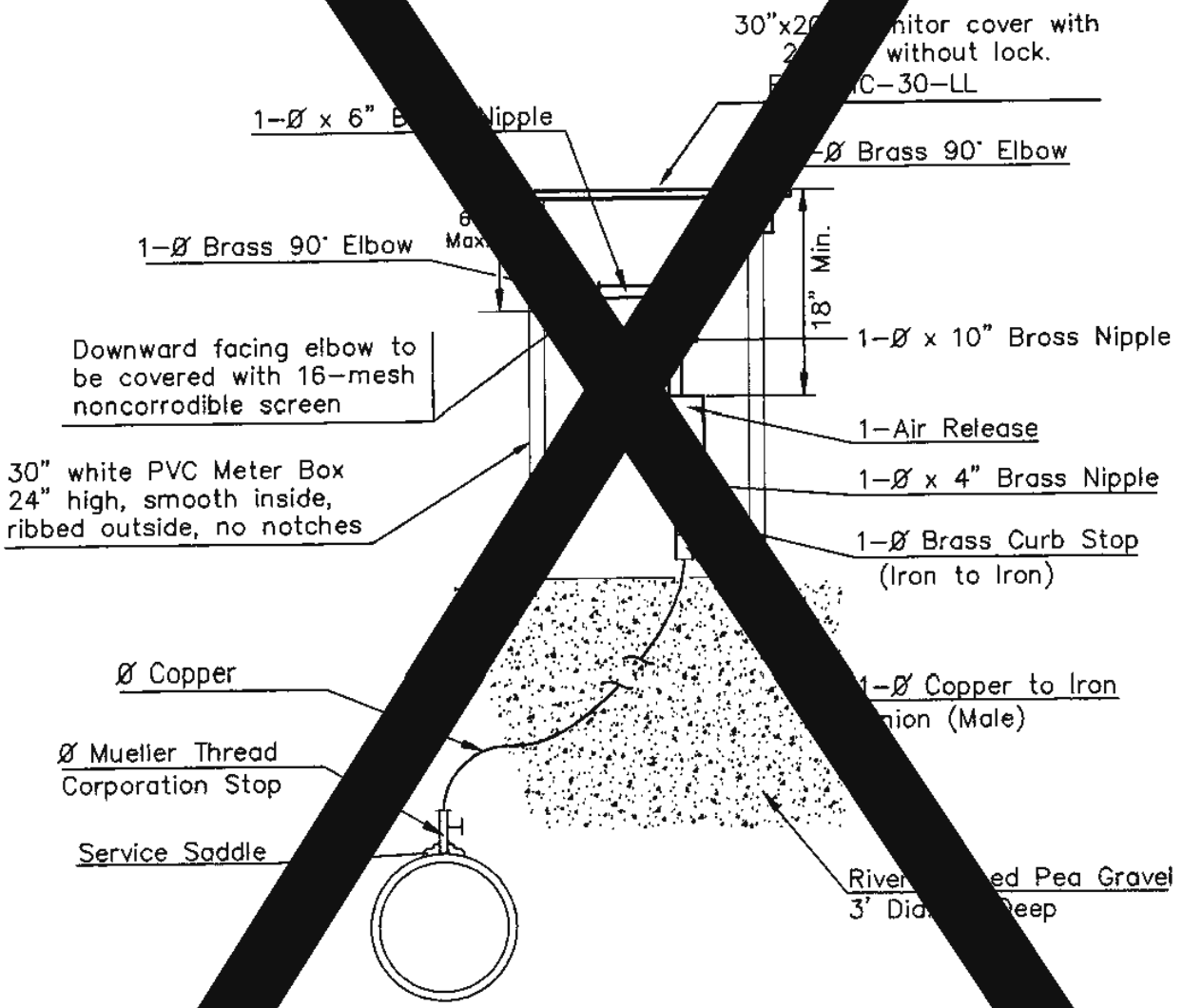
TYPICAL 1" METER SETTING

Minimum length of pigtail on consumer side is 36" of copper tubing from meter set.  
 Bore hole under paving shall be a maximum of 2" in diameter and a minimum of 36" below top of pavement.  
 Service Saddles are required on all mains.  
 Meter boxes will be located on each lot to be served, as indicated in the SPECIAL PROVISIONS

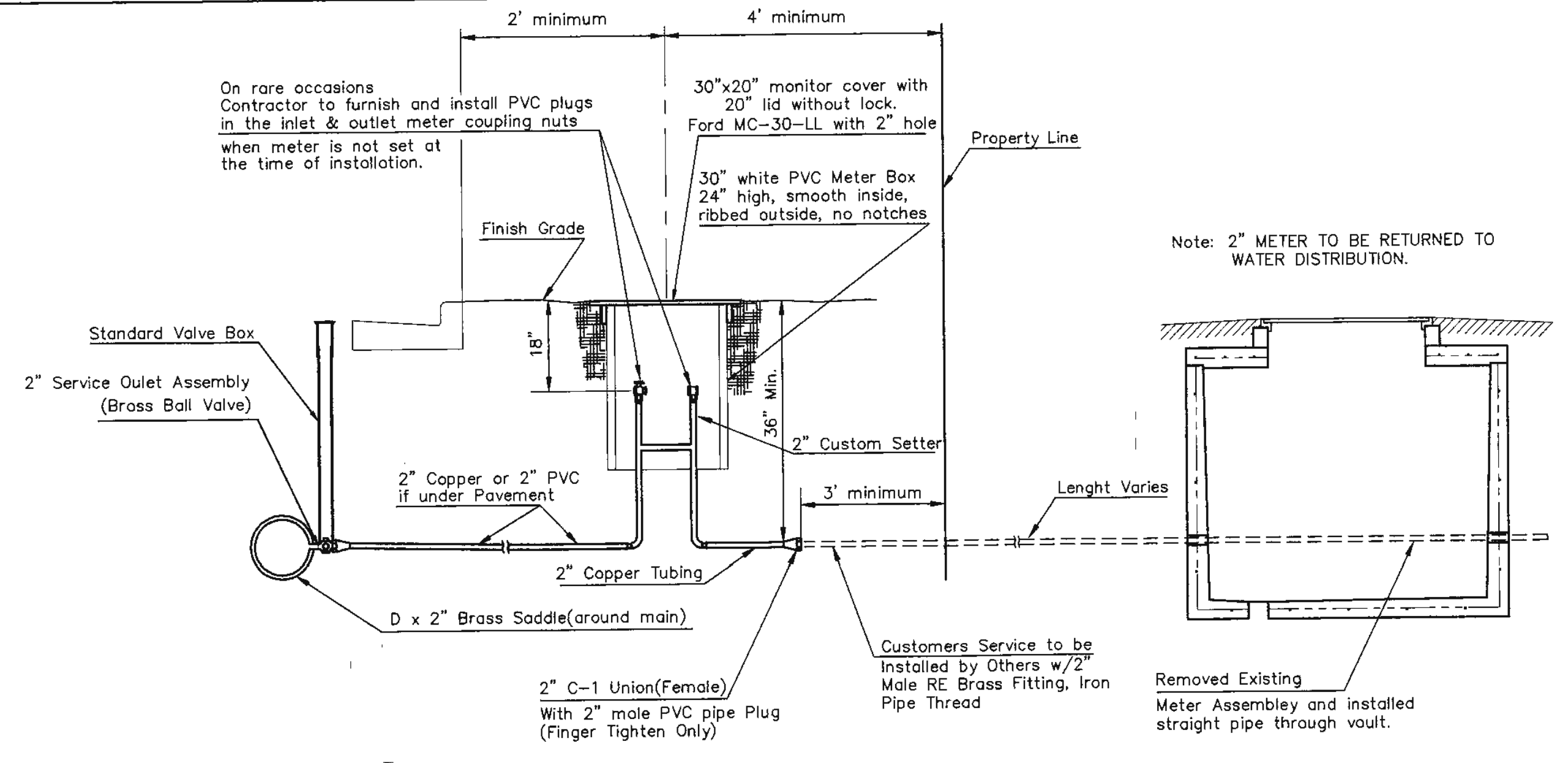


MATERIAL LIST FOR 1" METER BOX

NOTE: THE 1" / 2" AIR RELEASE ASSEMBLY WILL TYPICALLY BE USED ON WATER MAINS 24" AND SMALLER, AS SPECIFICALLY DESIGNATED IN THE PLANS. COMBINATION AIR RELEASE ASSEMBLIES WILL BE SPECIFICALLY DESIGNED FOR PROJECTS WITH LARGE MAINS, AND WILL BE INCLUDED IN THE PLANS.

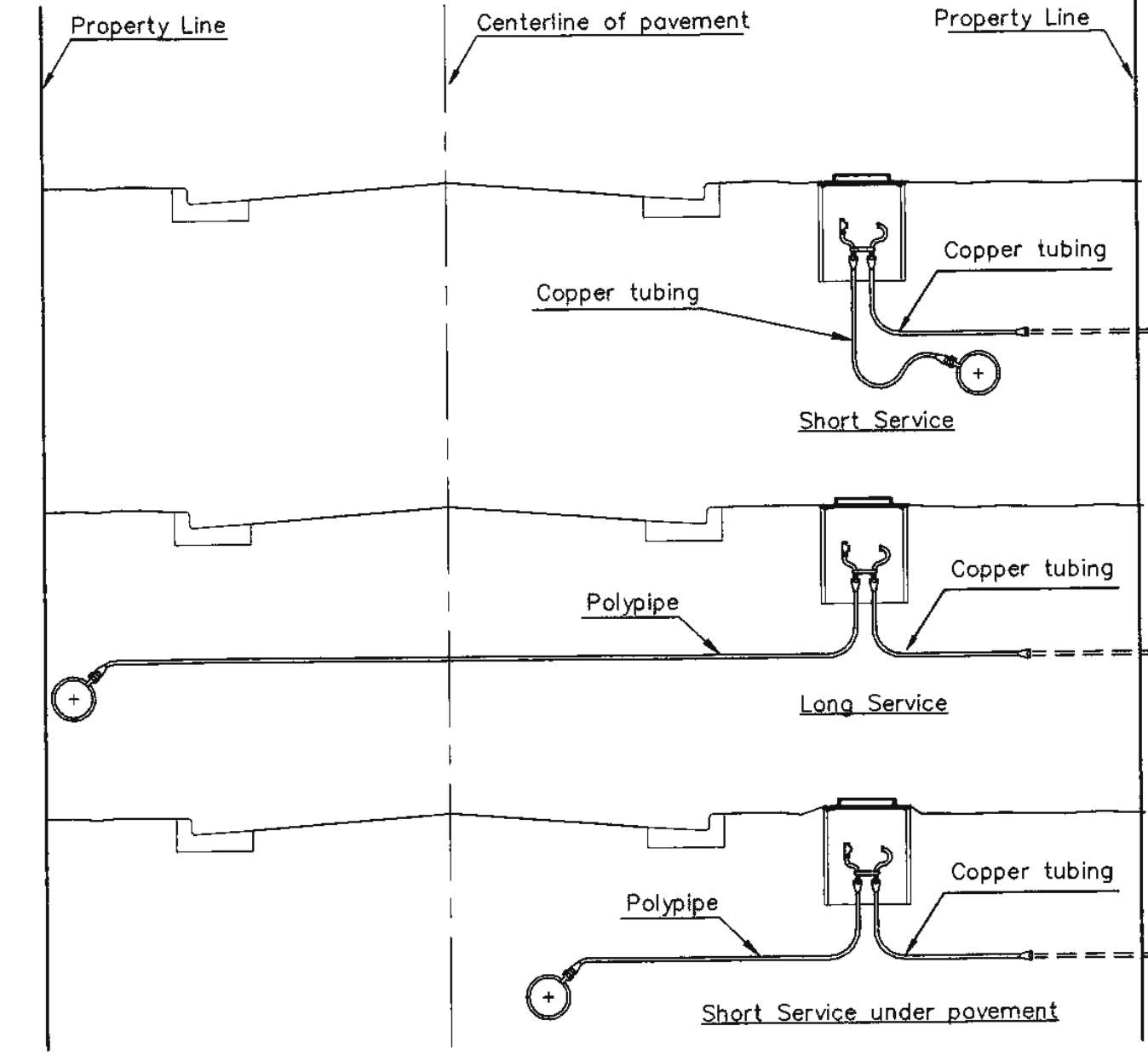


MATERIAL LIST FOR 1" or 2" AIR RELEASE ASSEMBLY

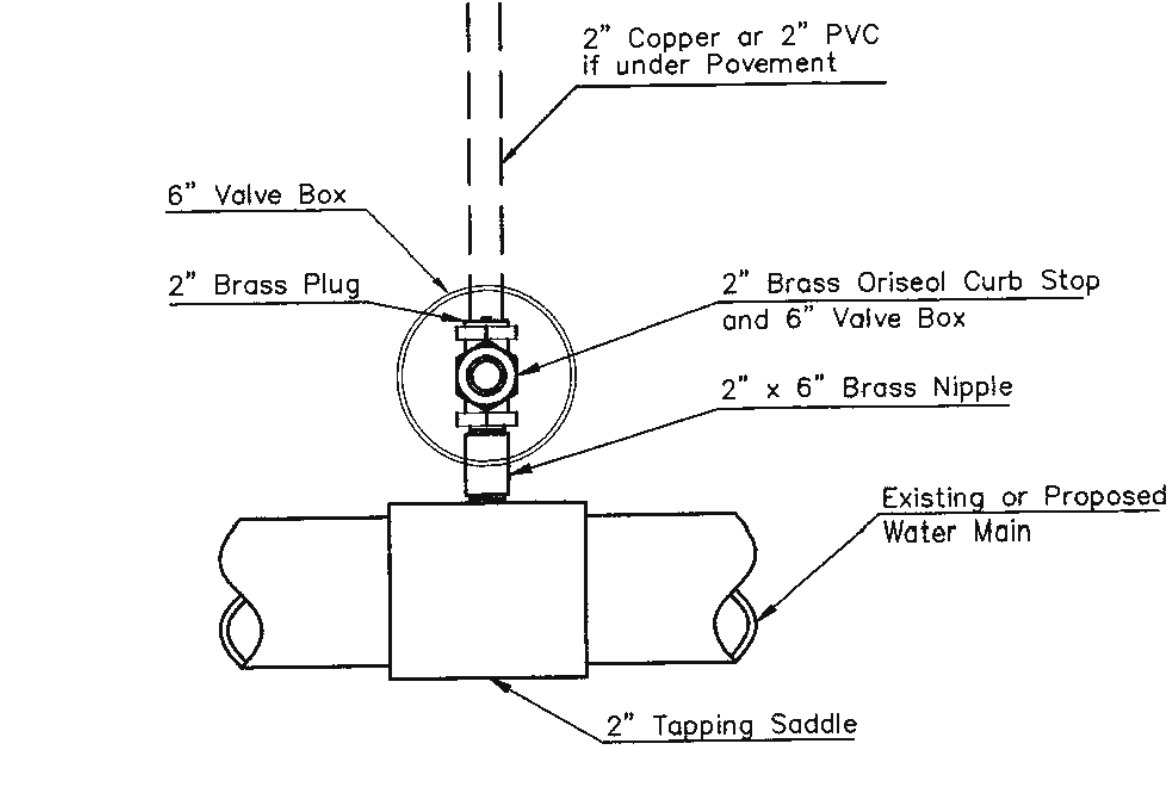


TYPICAL 2" METER SETTING INVOLVING EXISTING 2" METER VAULT

NOTE: ONE VALVE STEM EXTENSION FOR EACH VALVE BURIED GREATER THAN 5'.  
 Note: 2" METER TO BE RETURNED TO WATER DISTRIBUTION.



SERVICE TYPES



Note: Where the 2" Service Outlet Assembly is to be used to connect a 2" main to another main, the 2" valve shall be a 2" IPT Gate Valve. 2" ball or globe valves shall not be approved for this use.

2" SERVICE OUTLET ASSEMBLY TOP VIEW

REVISED: DECEMBER 2018 TM BRASS NIPPLE LENGTH TO 10" ON THE 1" OR 2" AIR RELEASE ASSEMBLY

**CITY OF WICHITA**  
 PUBLIC WORKS & UTILITIES ENGINEERING DIVISION

**STANDARD WATER SERVICE DETAIL**  
 CITY ENGINEER  
**GARY JANZEN, P.E.**

PROJECT NUMBER	OCA NUMBER	DATE
CITY ENGINEER'S OFFICE CITY HALL - SEVENTH FLOOR 455 NORTH MAIN STREET WICHITA, KANSAS 67202-1620 (316) 268-4501	SHEET	- of -

WL-102



**COCHRAN**  
 Civil Engineering  
 Land Surveying  
 Architecture  
 Site Development  
 General Consulting  
 Master Planning

North Office  
 8 East Main Street  
 Wentzville, Missouri 63385  
 636-332-4574 (tel.)  
 636-327-0764 (fax)

Kansas State Certificate of Authority Numbers: E-2927

The working days prior to the start of any excavation call 1-800-463-SAFE for utility location information.  
 All OSHA rules & regulations shall be strictly followed during construction (ie. Trenching, Blasting, etc.)

**KURTIS J. DANIELS**  
 LICENSED PROFESSIONAL ENGINEER  
 KANSAS  
 26277  
 KURTIS J. DANIELS  
 E-26277

WATER DISTRIBUTION SYSTEM  
 CLUB CARWASH  
 WICHITA, KANSAS

DETAILS / SPECIFIC / EROSION CONTROL

DATE	BY	APP'D BY
NTB	KJD	
SEPT. 2020		
AS SHOWN		
PPW-2020-028263		

8



OWNER: SCCI, LLC  
 4911 S. MERIDIAN WICHITA, KS 67217

DEVELOPER: CLUB CARWASH OPERATING, LLC  
 1213 OLD HWY 63, STE 101 COLUMBIA, MO 65201

DWG NAME: J:\2020\W20-7855 - CCW, 47th-Broadway, Wichita, KS\W20-7855A - Civil Design\ENGINEERING\AUTOCAD DRAWINGS\03\_Construction Drawings\01\_WATER DISTRIBUTION SYSTEM PLANS\W20-7855A\_B - details.dwg PLOTTED BY: Echeckman LAYOUT TAB: 8 PLOTTED ON: Nov 03, 2020 - 3:01pm

