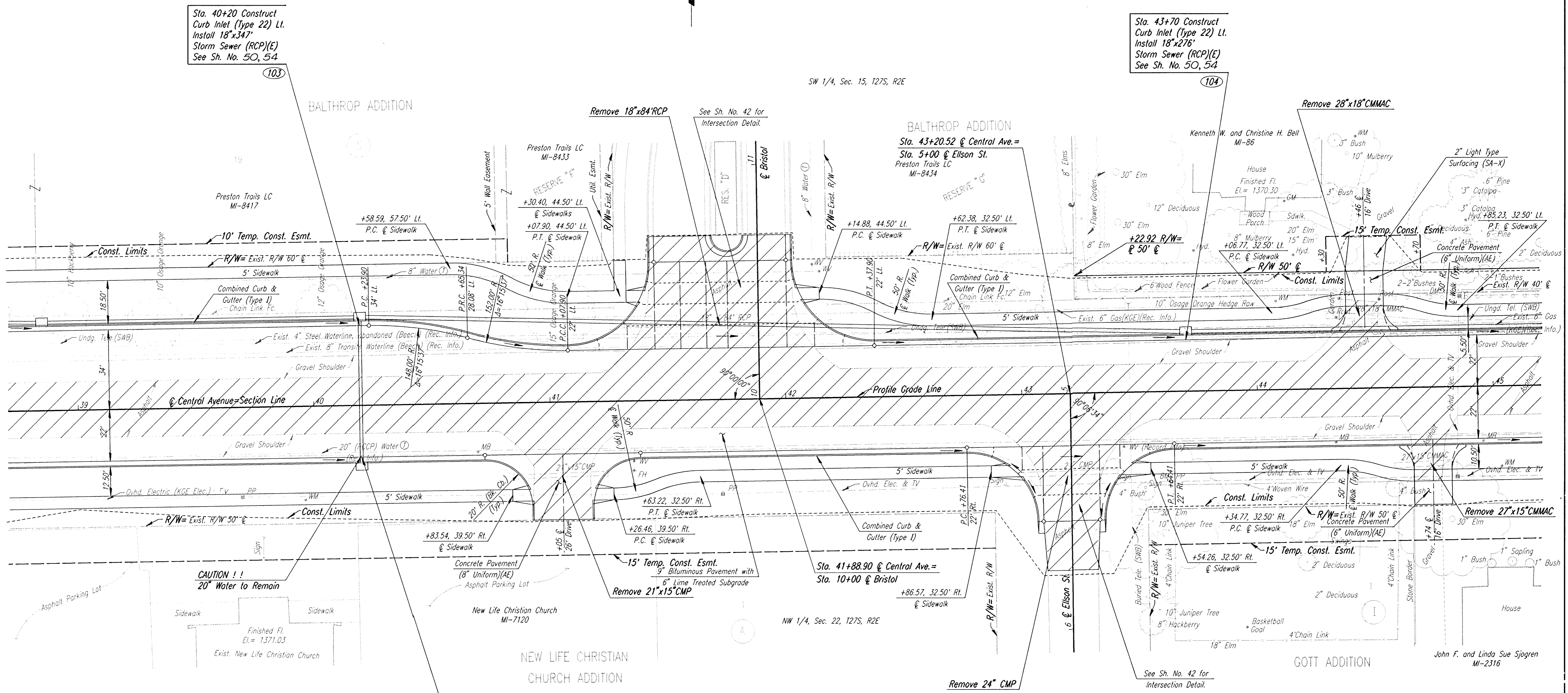


| PROJECT NO. | YEAR | SHEET NO. | TOTAL SHEETS |
|-------------|------|-----------|--------------|
| 618-34 | 1998 | 11 | 100 |

Scale: 1"=20'



Sta. 40+20 Construct Curb Inlet (Type 22) Lt. Install 18"x34" Storm Sewer (RCP)(E) See Sh. No. 50, 54

Sta. 43+70 Construct Curb Inlet (Type 22) Lt. Install 18"x276" Storm Sewer (RCP)(E) See Sh. No. 50, 54

Sta. 40+20 Construct Curb Inlet (Type 22) Rt. Install 15"x61" Storm Sewer (RCP)(N) See Sh. No. 50, 54

NW 1/4, Sec. 22, T27S, R2E

- UTILITIES**
- Water
 - Water Ⓞ
 - Power
 - Gas
 - Telephone
 - Cable TV
 - Beech
 - Wichita Water Dept.
 - Kansas Gas & Electric
 - Kansas Gas & Electric
 - Southwestern Bell
 - Multimedia Cablevision

BM #GG111: RR SPIKE IN SW FACE POWER POLE AT NW CORNER TO NEW LIFE CHRISTIAN CHURCH. 39' RT. STA. 37+63.3 ELEV.=1374.02

BM #GG110: RR SPIKE IN NORTH FACE POWER POLE AT SE CORNER CENTRAL & ELLSON. 38' RT. STA. 43+63 ELEV.=1366.67

| No. | Revisions | By | Date |
|---|-----------|-----------------|-----------|
| SEDGWICK COUNTY BUREAU OF PUBLIC SERVICES | | | |
| CENTRAL AVENUE STA. 39+00 TO STA. 45+00 | | | |
| PROJECT NO. 618-34 | | SEDGWICK COUNTY | |
| PROFESSIONAL ENGINEERING CONSULTANTS, P.A. ENGINEERS WICHITA, KANSAS | | | |
| Designed by | JPS | Checked by | WDH |
| Drawn by | BJS/MAF | Date | JULY 1997 |
| | | Job No. | 95297-2 |

1/1995/95297/002/srt-39-45.dgn
 Drawn by: bjs/maf
 Plotted by: maf 8-14-97