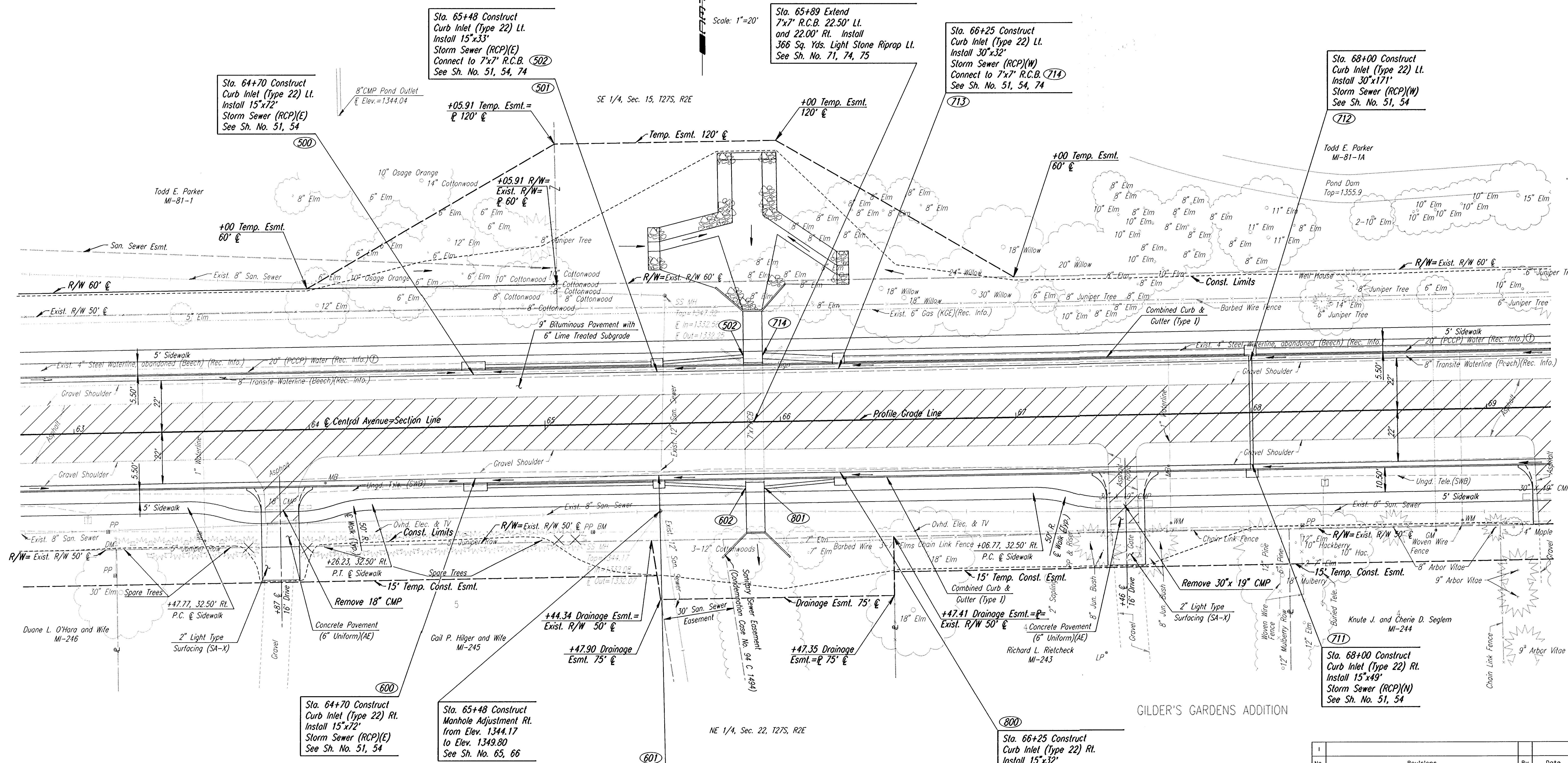


PROJECT NO.	YEAR	SHEET NO.	TOTAL SHEETS
618-34	1998	19	169

Pond Emergency Spillway  
244' Lt. Sta. 66+51  
Elev.=1352.9

Scale: 1"=20'



Sta. 65+48 Construct Curb Inlet (Type 22) Lt. Install 15"x33" Storm Sewer (RCP)(E) Connect to 7"x7" R.C.B. (502) See Sh. No. 51, 54, 74

Sta. 65+89 Extend 7"x7" R.C.B. 22.50' Lt. and 22.00' Rt. Install 366 Sq. Yds. Light Stone Riprap Lt. See Sh. No. 71, 74, 75

Sta. 66+25 Construct Curb Inlet (Type 22) Lt. Install 30"x32" Storm Sewer (RCP)(W) Connect to 7"x7" R.C.B. (714) See Sh. No. 51, 54, 74

Sta. 68+00 Construct Curb Inlet (Type 22) Lt. Install 30"x171" Storm Sewer (RCP)(W) See Sh. No. 51, 54

Sta. 64+70 Construct Curb Inlet (Type 22) Rt. Install 15"x72" Storm Sewer (RCP)(E) See Sh. No. 51, 54

Sta. 65+48 Construct Manhole Adjustment Rt. from Elev. 1344.17 to Elev. 1349.80 See Sh. No. 65, 66

Sta. 65+48 Construct Curb Inlet (Type 22) Rt. Install 15"x33" Storm Sewer (RCP)(E) Connect to 7"x7" R.C.B. (602) See Sh. No. 51, 54, 74

Sta. 66+25 Construct Curb Inlet (Type 22) Rt. Install 15"x32" Storm Sewer (RCP)(W) Connect to 7"x7" R.C.B. (801) See Sh. No. 52, 54, 74

Sta. 68+00 Construct Curb Inlet (Type 22) Rt. Install 15"x49" Storm Sewer (RCP)(N) See Sh. No. 51, 54

- UTILITIES
- Water
  - Water (C)
  - Power
  - Gas
  - Telephone
  - Cable TV
  - San. Sewer
  - Beech
  - Wichita Water Dept.
  - Kansas Gas & Electric
  - Kansas Gas & Electric
  - Southwestern Bell
  - Multimedia Cablevision
  - Sedgwick County

EM #200: 40D STEP NAILS IN EAST FACE POWER POLE, 46' SOUTH OF CENTRAL, 650' EAST OF JACKSON ST. 46' RT. STA. 65+19 ELEV.=1345.48

I:\1995\95297\002\str63+69.dgn  
Drawn by: bjs/maf  
Plotted by: D.W. 11-26-97

No.	Revisions	By	Date

SEDGWICK COUNTY BUREAU OF PUBLIC SERVICES

**CENTRAL AVENUE**  
STA. 63+00 TO STA. 69+00

PROJECT NO. 618-34 SEDGWICK COUNTY

**PROFESSIONAL ENGINEERING CONSULTANTS P.A.**  
ENGINEERS  
WICHITA, KANSAS

Designed by	JPS	Checked by	WDH
Drawn by	BJS/MAF	Date	JULY 1997
		Job No.	95297-2