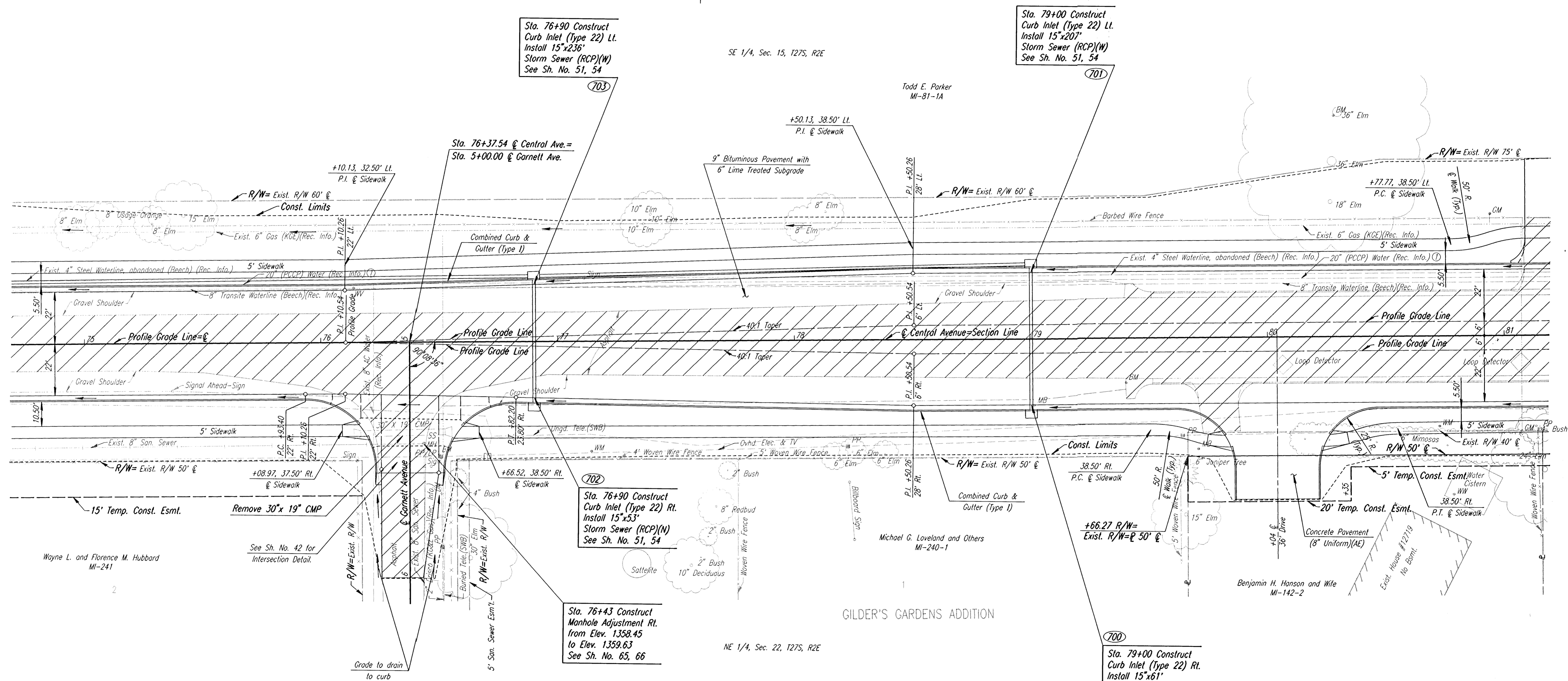


PROJECT NO.	YEAR	SHEET NO.	TOTAL SHEETS
618-34	1998	23	169

Scale: 1"=20'



SE 1/4, Sec. 15, T27S, R2E

Todd E. Parker
MI-81-1A

+50.13, 38.50' Lt.
P.I. @ Sidewalk

Sta. 79+00 Construct
Curb Inlet (Type 22) Lt.
Install 15'x207'
Storm Sewer (RCP)(W)
See Sh. No. 51, 54

Sta. 76+90 Construct
Curb Inlet (Type 22) Lt.
Install 15'x236'
Storm Sewer (RCP)(W)
See Sh. No. 51, 54

Sta. 76+37.54 @ Central Ave. =
Sta. 5+00.00 @ Garnett Ave.

Sta. 76+90 Construct
Curb Inlet (Type 22) Rt.
Install 15'x53'
Storm Sewer (RCP)(N)
See Sh. No. 51, 54

Sta. 76+43 Construct
Manhole Adjustment Rt.
from Elev. 1358.45
to Elev. 1359.63
See Sh. No. 65, 66

Sta. 79+00 Construct
Curb Inlet (Type 22) Rt.
Install 15'x61'
Storm Sewer (RCP)(N)
See Sh. No. 51, 54

NE 1/4, Sec. 22, T27S, R2E

GILDER'S GARDENS ADDITION

Michael G. Loveland and Others
MI-240-1

Benjamin H. Hanson and Wife
MI-142-2

Wayne L. and Florence M. Hubbard
MI-241

UTILITIES

- Water Beech
- Water (D) Wichita Water Dept.
- Power Kansas Gas & Electric
- Gas Kansas Gas & Electric
- Telephone Southwestern Bell
- Cable TV Multimedia Cablevision
- San. Sewer Sedgwick County

BM #GG5: RR SPIKE IN NW FACE POWER POLE 47' SOUTH OF
@ CENTRAL, 16' EAST OF @ GARNETT. ELEV.=1363.18

BM #202: CHIS "d" AT WEST END CONCRETE FLUME, SOUTH SIDE
CENTRAL, 350' WEST OF @ 127TH ST. E.
19' RT. STA. 79+40 ELEV.=1366.66

BM #212: RR SPIKE IN SOUTH FACE 36" ELM, 94' NORTH OF
@ CENTRAL AVE., 270' WEST OF @ 127TH ST. E.
94' LT. STA. 80+28 ELEV.=1368.46

i:/1995/95297/002/st75-81.dgn
 Drawn by: bjs/rmf
 Plotted by: DWW 11-4-97

No.		Revisions		By	Date
SEDGWICK COUNTY BUREAU OF PUBLIC SERVICES CENTRAL AVENUE STA. 75+00 TO STA. 81+00 PROJECT NO. 618-34 SEDGWICK COUNTY PROFESSIONAL ENGINEERING CONSULTANTS, P.A. ENGINEERS WICHITA, KANSAS					
Designed by	JPS	Checked by	WDH		
Drawn by	BJS/MWF	Date	JULY 1997	Job No. 95297-2	