

PROJECT NO.	YEAR	SHEET NO.	TOTAL SHEETS
618-34	1998	20	100

Scale: 1"=20'

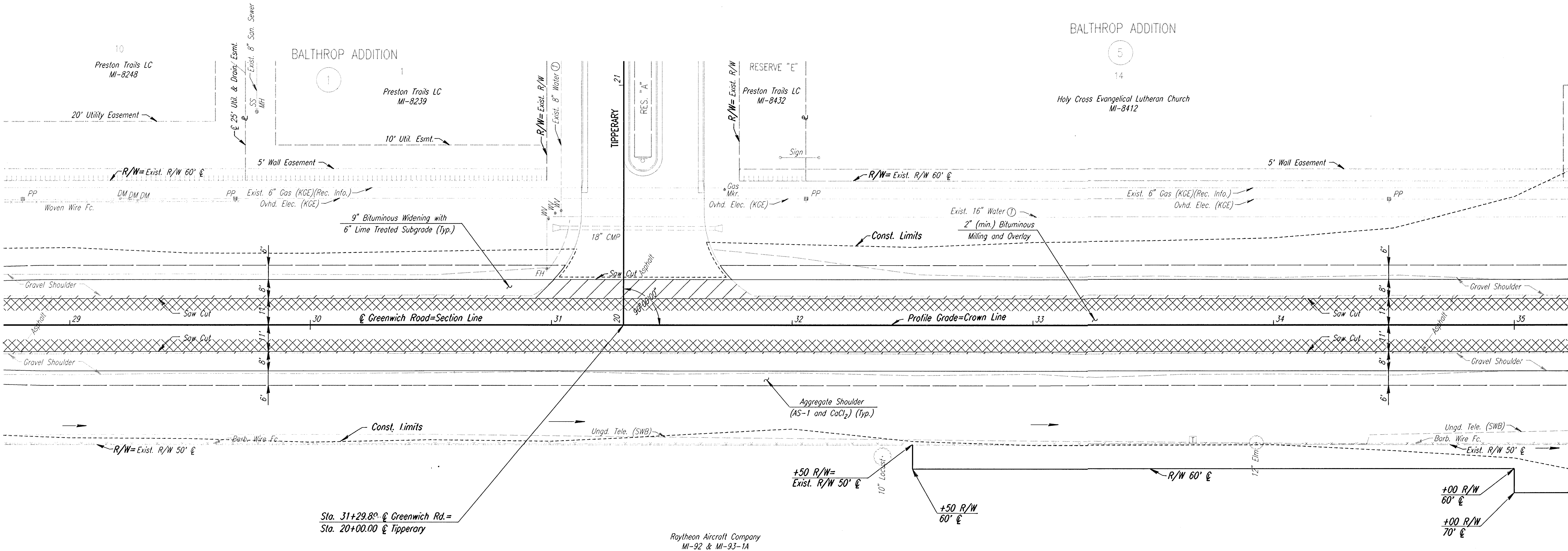
SW 1/4, Sec. 15, T27S, R2E

BALTHROP ADDITION

5

14

Holy Cross Evangelical Lutheran Church  
MI-8412



Sta. 31+29.80 @ Greenwich Rd.=  
Sta. 20+00.00 @ Tipperary

Raytheon Aircraft Company  
MI-92 & MI-93-1A

SE 1/4, Sec. 16, T27S, R2E

UTILITIES

- Water ① Wichita Water Dept.
- Power Kansas Gas & Electric
- Gas Kansas Gas & Electric
- Telephone Southwestern Bell
- San. Sewer Sedgwick County

BM #53: CITY OF WICHITA DISC 48' EAST OF @ GREENWICH RD.,  
1/2 MILE NORTH OF CENTRAL AVENUE.  
48' LT. STA. 23+47 ELEV.=1389.22

BM #51: RAILROAD SPIKE IN EAST FACE OF 20" ELM TREE ON WEST SIDE OF  
GREENWICH ROAD, APPROXIMATELY 425' SOUTH OF TIPPERARY.  
48' RT. STA. 35+55 ELEV.=1370.91

No.		Revisions		By	Date
SEDGWICK COUNTY BUREAU OF PUBLIC SERVICES					
<b>GREENWICH ROAD</b> STA. 29+00 TO STA. 35+00					
PROJECT NO. 618-34			SEDGWICK COUNTY		
<b>PROFESSIONAL ENGINEERING CONSULTANTS, P.A.</b> ENGINEERS WICHITA, KANSAS					
Designed by	JPS	Checked by	WDH		
Drawn by	BJS/MAF	Date	JULY 1997	Job No. 95297-2	

i:\1995\95297\002\st29-35.dgn  
 Drawn by: bjs/maf  
 Plotted by: maf 8-14-97