

PROJECT NO.	YEAR	SHEET NO.	TOTAL SHEETS
618-34	1998	33	169

Scale: 1"=20'

See Sh. No. 49 for Storm Sewer Plan of System 900 Outfall.

SW 1/4, Sec. 15, T27S, R2E

BALTHROP ADDITION

Sta. 43+40 Construct Curb Inlet (Type 22) Lt. Install 15"x23" Storm Sewer (RCP)(E) See Sh. No. 53, 54

Sta. 43+40 Construct Reinforced Concrete Manhole Lt. Install 42"x260" Storm Sewer (RCP)(E) See Sh. No. 53, 59

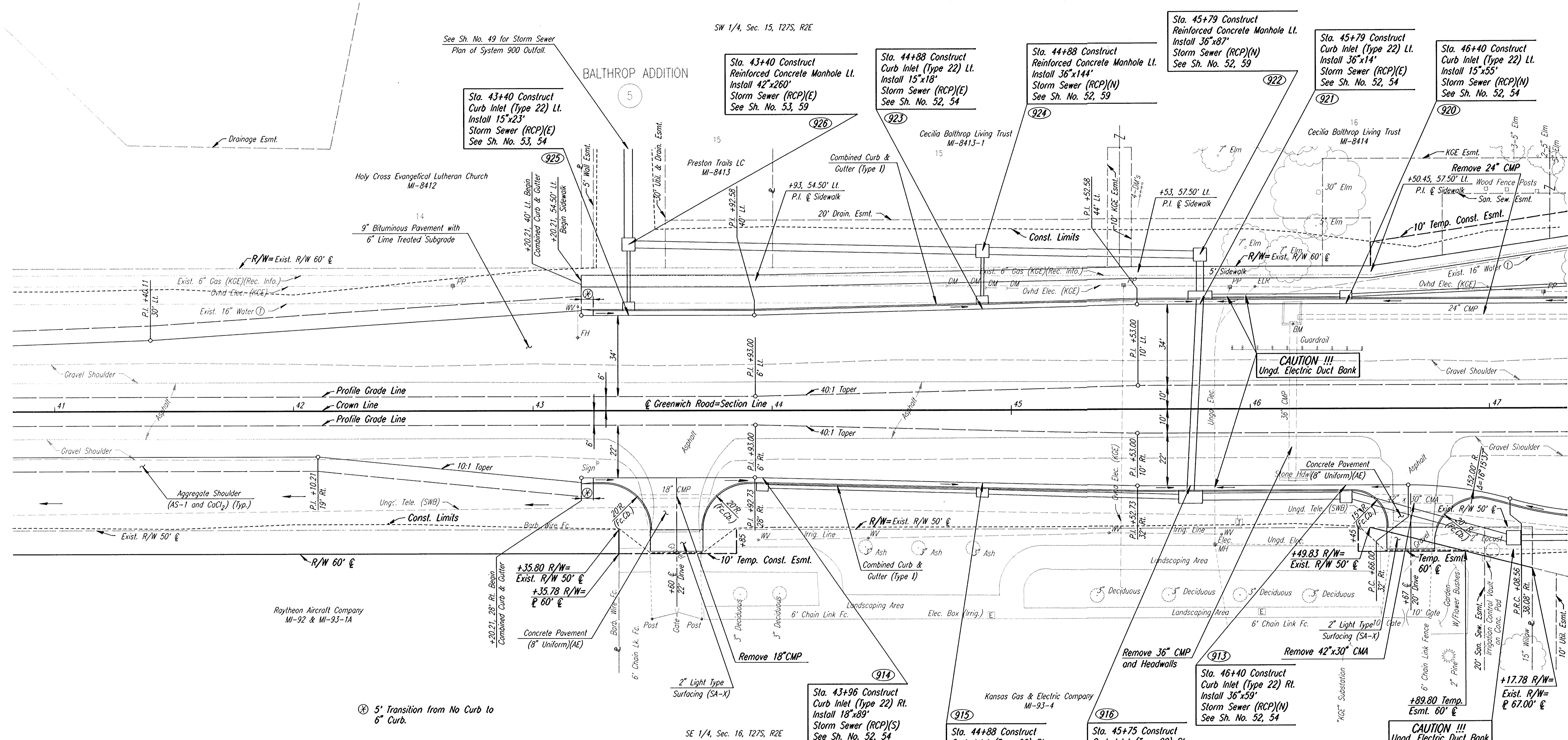
Sta. 44+88 Construct Curb Inlet (Type 22) Lt. Install 15"x18" Storm Sewer (RCP)(E) See Sh. No. 52, 54

Sta. 44+88 Construct Reinforced Concrete Manhole Lt. Install 36"x144" Storm Sewer (RCP)(N) See Sh. No. 52, 59

Sta. 45+79 Construct Reinforced Concrete Manhole Lt. Install 36"x87" Storm Sewer (RCP)(N) See Sh. No. 52, 59

Sta. 45+79 Construct Curb Inlet (Type 22) Lt. Install 36"x14" Storm Sewer (RCP)(E) See Sh. No. 52, 54

Sta. 46+40 Construct Curb Inlet (Type 22) Lt. Install 15"x55" Storm Sewer (RCP)(N) See Sh. No. 52, 54



⊗ 5' Transition from No Curb to 6" Curb.

SE 1/4, Sec. 16, T27S, R2E

Sta. 43+96 Construct Curb Inlet (Type 22) Rt. Install 18"x89" Storm Sewer (RCP)(S) See Sh. No. 52, 54

Sta. 44+88 Construct Curb Inlet (Type 22) Rt. Install 24"x81" Storm Sewer (RCP)(S) See Sh. No. 52, 54

Sta. 45+75 Construct Curb Inlet (Type 22) Rt. Install 36"x81" Storm Sewer (RCP)(E) See Sh. No. 52, 54

Sta. 46+40 Construct Curb Inlet (Type 22) Rt. Install 36"x59" Storm Sewer (RCP)(N) See Sh. No. 52, 54

CAUTION!!! Ungd. Electric Duct Bank

- UTILITIES
- Water ① Wichita Water Dept.
  - Power Kansas Gas & Electric
  - Gas Kansas Gas & Electric
  - Telephone Southwestern Bell
  - Cable TV Multimedia Cablevision

DATUM BM #9: CHIS "d" EAST HEADWALL CMP UNDER GREENWICH, 400± NORTH OF CENTRAL. 36" LT. STA. 46+18 ELEV.=1370.04

No.	Revisions	By	Date
SEDGWICK COUNTY BUREAU OF PUBLIC SERVICES			
<b>GREENWICH ROAD</b>			
STA. 41+00 TO STA. 47+00			
PROJECT NO. 618-34		SEDGWICK COUNTY	
<b>PROFESSIONAL ENGINEERING CONSULTANTS, P.A.</b>			
ENGINEERS WICHITA, KANSAS			
Designed by	JPS	Checked by	WDH
Drawn by	BJS/MAF	Date	JULY 1997
			Job No. 95297-2

1:1995/95297/002/st41-47.dgn  
 Drawn by: bjs/mef  
 Plotted by: DJW 12-2-97