

PROJECT NO.	YEAR	SHEET NO.	TOTAL SHEETS
618-34	1998	35	100

- P.I. @ STA. 50+00.00 (49)
- FOUND 1/2" IRON PIPE IN THIMBLE
 - CHIS "+" SOUTH TOP 18" CONC. LIGHT BASE NORTH SIDE QUIKTRIP/EAST ENTRANCE
 - 1/2" REBAR 28" WEST OF 12" CEDAR
 - CHIS "+" SW CORNER TRAFFIC SIGNAL POLE CONC. BASE
 - CHIS "+" TRAFFIC SIGNAL POLE BASE
 - CHIS "+" ON CONC. CURB QUIKTRIP PARKING LOT AT P.I. NE BY NW AT SE COR. PARKING LOT
 - 60D NAIL IN SW FACE POWER POLE
- 163.43' NW
142.39' SW
56.94' NE
67.48' SE
95.52' NW
58.45' SE

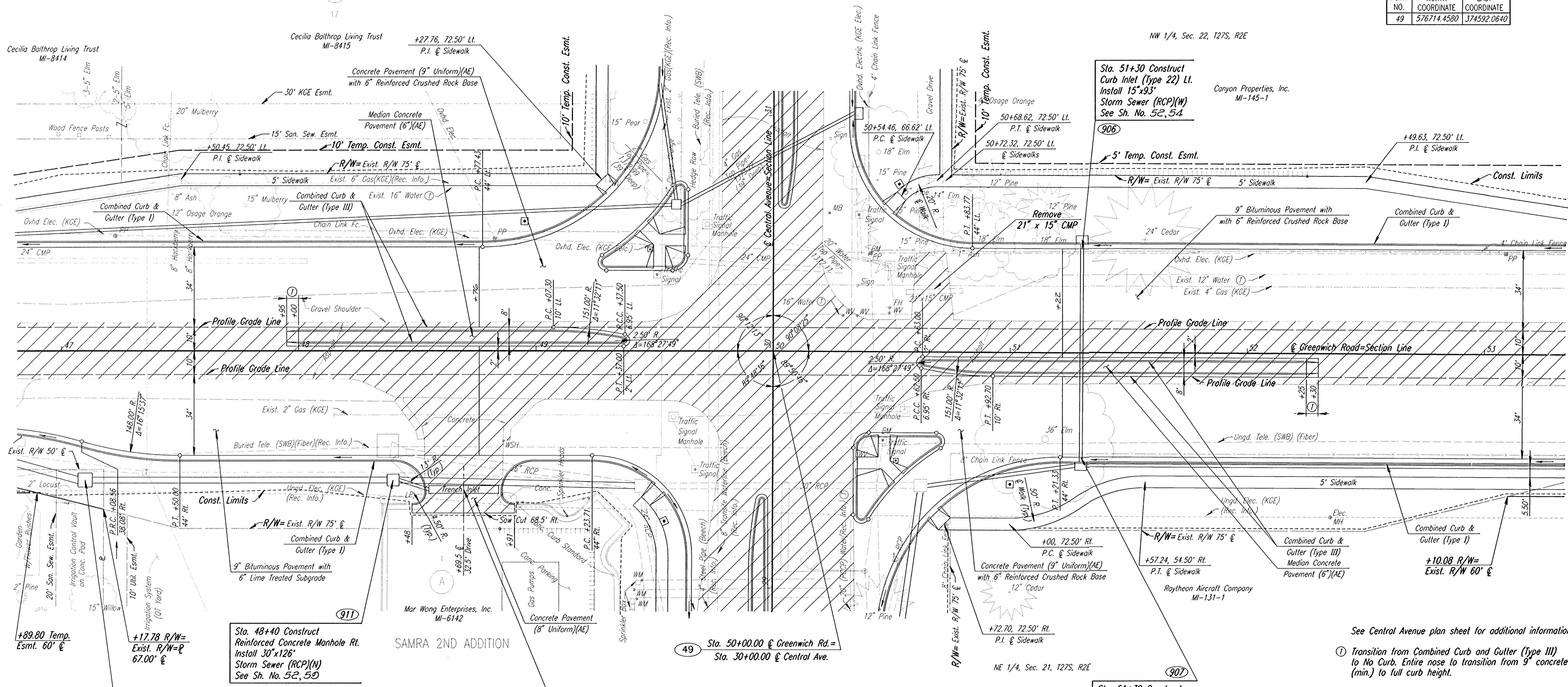
POINT NO.	NORTH COORDINATE	EAST COORDINATE
49	576714.4580	374592.0640

BALTHROP ADDITION

SW 1/4, Sec. 15, T27S, R2E

5
17

Scale: 1"=20'



Sta. 48+40 Construct Reinforced Concrete Manhole Rt. Install 30"x126" Storm Sewer (RCP)(N) See Sh. No. 52, 50

49 Sta. 50+00.00 @ Greenwich Rd.= Sta. 30+00.00 @ Central Ave.

907 Sta. 51+30 Construct Curb Inlet (Type 22) Rt. Install 18"x65" Storm Sewer (RCP)(NNW) See Sh. No. 52, 54

912 Sta. 47+10 Construct Inlet-Manhole (Special) Rt. Install 36"x72" Storm Sewer (RCP)(NE) See Sh. No. 52, 55

910 Sta. 48+69.50 Construct Trench Inlet Rt. Install 15"x16" Storm Sewer (RCP)(NE) See Sh. No. 52, 50

UTILITIES

- Water
- Water (D)
- Power
- Gas
- Telephone
- Cable TV
- San. Sewer
- Beech
- Wichita Water Dept.
- Kansas Gas & Electric
- Kansas Gas & Electric
- Southwestern Bell
- Multimedia Cablevision
- Sedgwick County

- SW COR. SEC. 15, T27S, R2E (49)
- @ STA. 50+00.00 GREENWICH ROAD=
@ STA. 30+00.00 CENTRAL AVENUE
- FOUND 1/2" IRON PIPE IN THIMBLE
 - CHIS "+" SOUTH TOP 18" CONC. LIGHT BASE NORTH SIDE QUIKTRIP/EAST ENTRANCE
 - 1/2" REBAR 28" WEST OF 12" CEDAR
 - CHIS "+" SW CORNER TRAFFIC SIGNAL POLE CONC. BASE
 - CHIS "+" TRAFFIC SIGNAL POLE BASE
 - CHIS "+" ON CONC. CURB QUIKTRIP PARKING LOT AT P.I. NE BY NW AT SE COR. PARKING LOT
 - 60D NAIL IN SW FACE POWER POLE
- 163.43' NW
142.39' SW
56.94' NE
67.48' SE
95.52' NW
58.45' SE

BM #GG112: 40D STEP NAIL IN NW FACE POWER POLE AT SE CORNER CENTRAL AND GREENWICH ROAD. 41' LT. STA. 50+40 ELEV.=1378.40

BM #GG117: CITY OF WICHITA DISC ON CONC. BASE OF TRAFFIC SIGNAL POLE AT SW CORNER CENTRAL & GREENWICH ROAD. 36' RT. STA. 50+45 ELEV.=1376.42

See Central Avenue plan sheet for additional information.

1 Transition from Combined Curb and Gutter (Type III) to No Curb. Entire nose to transition from 9" concrete (min.) to full curb height.

No.	Revisions	By	Date

SEDGWICK COUNTY BUREAU OF PUBLIC SERVICES

GREENWICH ROAD
STA. 47+00 TO STA. 53+00

PROJECT NO. 618-34 SEDGWICK COUNTY

PROFESSIONAL ENGINEERING CONSULTANTS, P.A.
ENGINEERS
WICHITA, KANSAS

Designed by	JPS	Checked by	WDH
Drawn by	BJS/mcf	Date	JULY 1997
		Job No.	95297-2

1:/1995/95297/002/st47-53.dgn
Drawn by: bjs/mcf
Plotted by: mcf 8-14-97