



Scale: 1"=20'

- P.I. @ STA. 76+57.03 (51)
- FOUND 1/2" IRON PIPE
  - OF DOUGLAS AND GREENWICH ROADS
  - PK NAIL IN NE FACE 8" PINE TREE
  - NAIL & SHINER IN CONCRETE BASE FENCE POST
  - NAIL & SHINER IN CONCRETE BASE FENCE POST
  - 3 NAILS IN NW FACE HIGH VOLTAGE POLE
- 100.71' SE  
68.16' WNW  
74.97' WSW  
55.09' NE

PROJECT NO.	YEAR	SHEET NO.	TOTAL SHEETS
618-34	1998	30	100

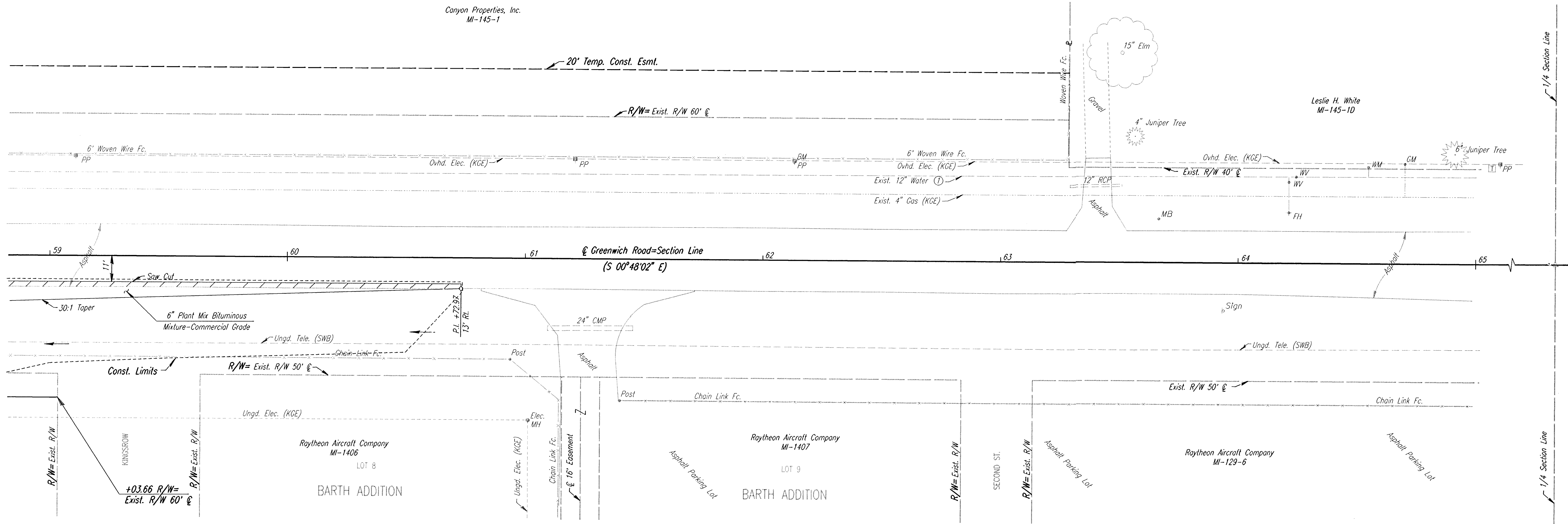
COORDINATE TABLE		
POINT NO.	NORTH COORDINATE	EAST COORDINATE
51	574057.6847	374629.1920

NW 1/4, Sec. 22, T27S, R2E

Canyon Properties, Inc.  
MI-145-1

20' Temp. Const. Esmt.

R/W=Exist. R/W 60' @



NE 1/4, Sec. 21, T27S, R2E

- UTILITIES**
- Water (W) Wichita Water Dept.
  - Power Kansas Gas & Electric
  - Gas Kansas Gas & Electric
  - Telephone Southwestern Bell

BM #GG114: 40D STEP NAILS IN WEST FACE POWER POLE, EAST SIDE  
GREENWICH, 1200± SOUTH OF @ CENTRAL AVE.  
41' LT. STA. 62+13 ELEV.=1384.74

- W 1/4 COR. SEC. 22, T27S, R2E (51)  
@ STA. 76+57.03 GREENWICH ROAD
- FOUND 1/2" IRON PIPE
  - OF DOUGLAS AND GREENWICH ROADS
  - PK NAIL IN NE FACE 8" PINE TREE
  - NAIL & SHINER IN CONCRETE BASE FENCE POST
  - NAIL & SHINER IN CONCRETE BASE FENCE POST
  - 3 NAILS IN NW FACE HIGH VOLTAGE POLE
- 100.71' SE  
68.16' WNW  
74.97' WSW  
55.09' NE

I:\1995\95297\002\st59-65.dgn  
 Drawn by: bjs/mcf  
 Plotted by: mcf 8-14-97

1			
No.	Revisions	By	Date
SEDGWICK COUNTY BUREAU OF PUBLIC SERVICES  <b>GREENWICH ROAD</b> STA. 59+00 TO STA. 65+00  PROJECT NO. 618-34 SEDGWICK COUNTY <b>PROFESSIONAL ENGINEERING CONSULTANTS, P.A.</b> <small>ENGINEERS</small> <b>WICHITA, KANSAS</b>			
Designed by	JPS	Checked by	WDH
Drawn by	BJS/MAF	Date	JULY 1997
		Job No.	95297-2