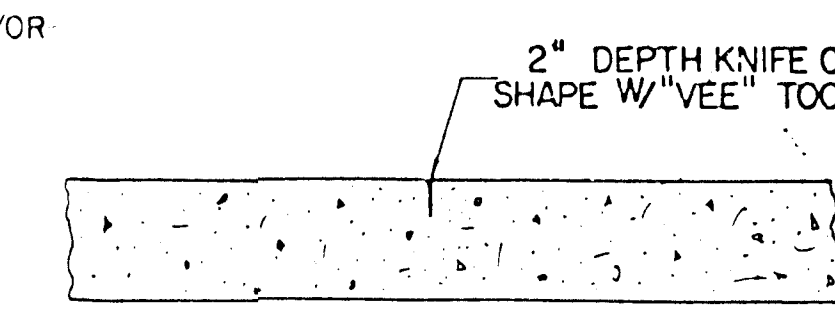
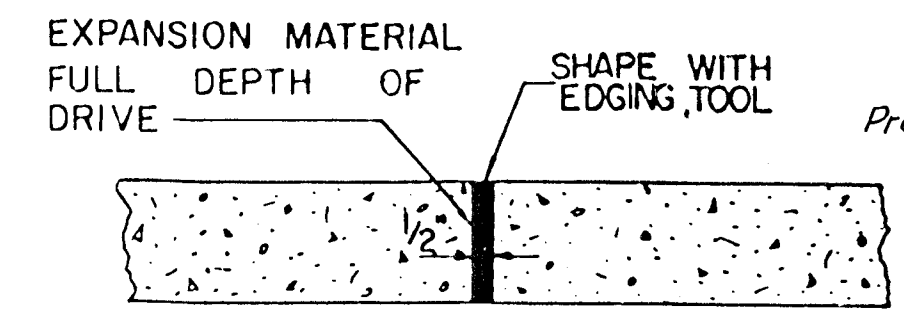


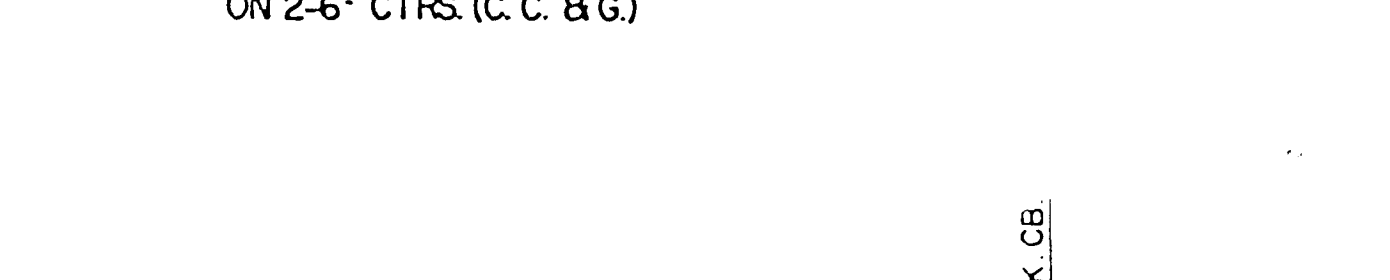
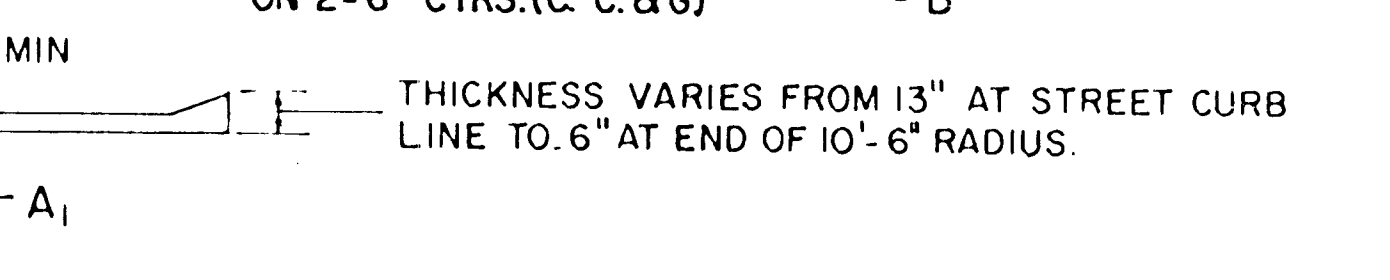
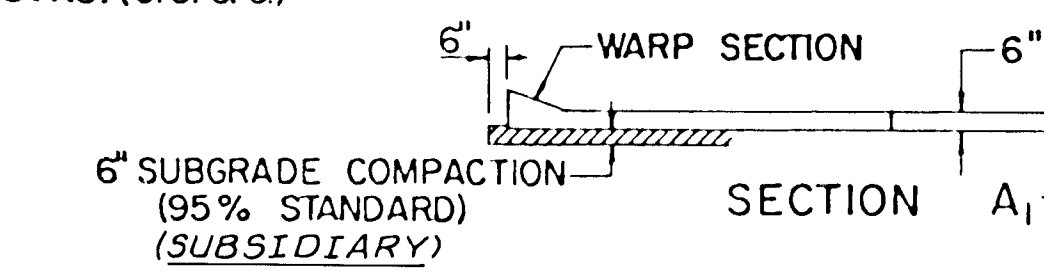
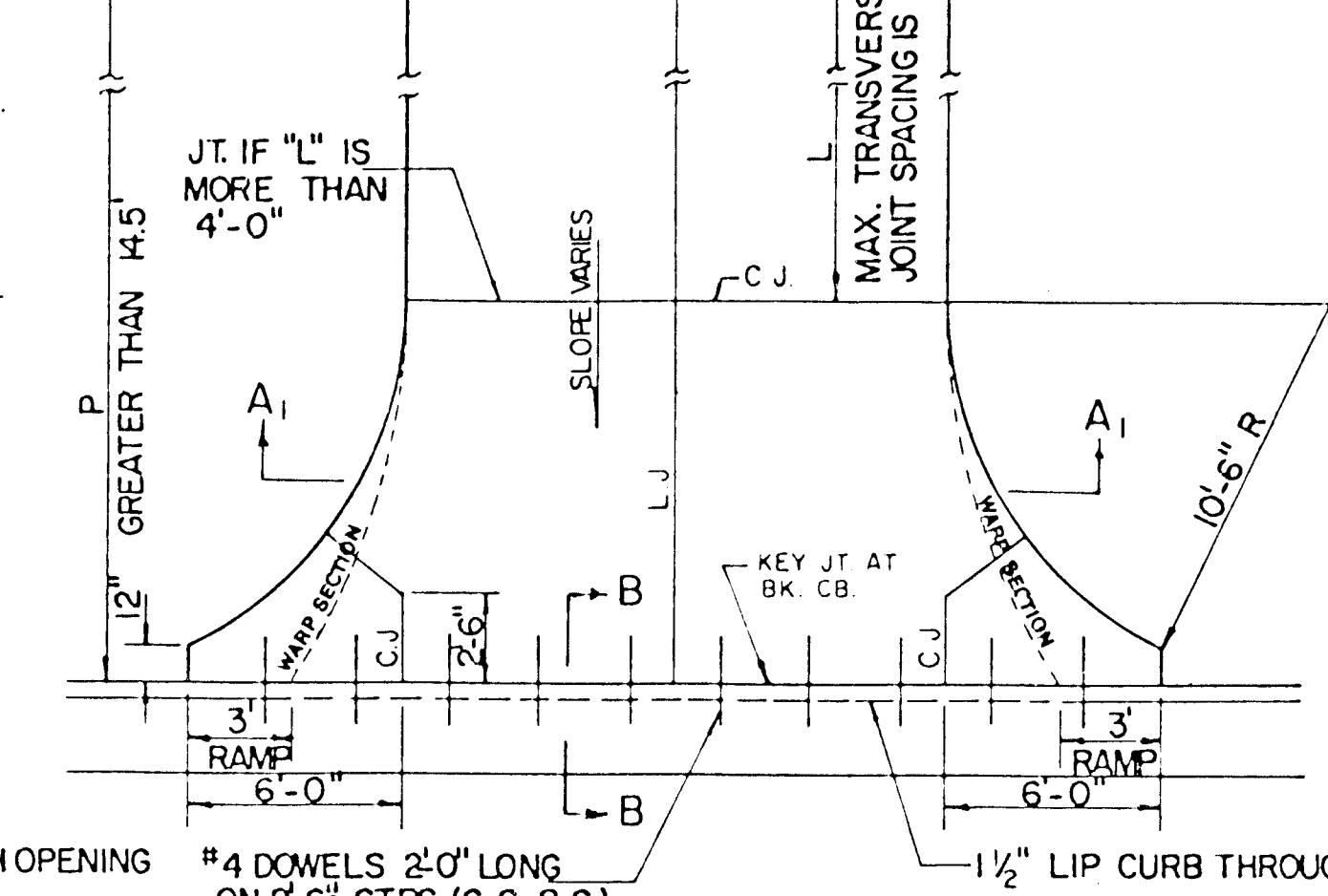
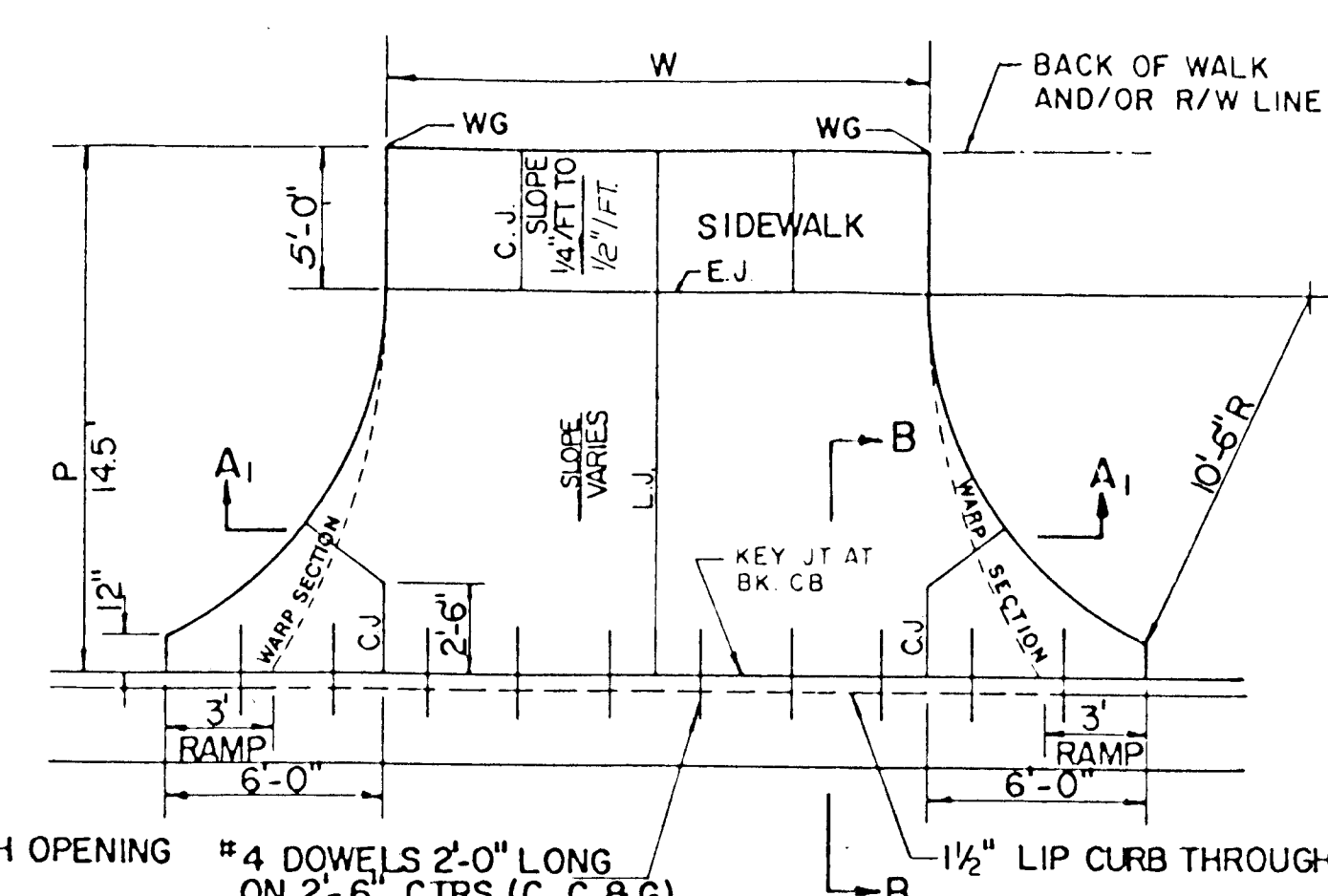
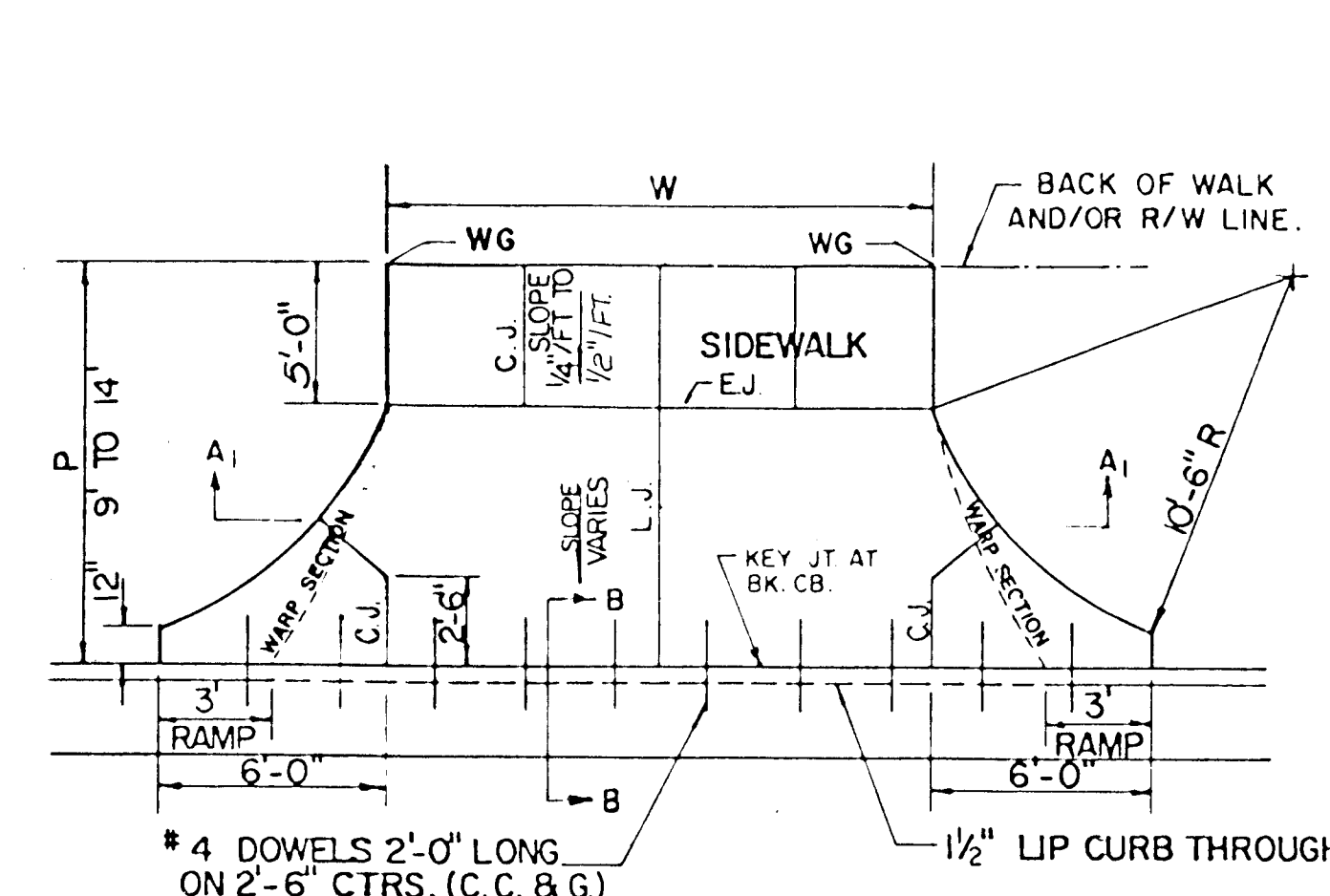
ALT. LONGITUDINAL CONSTRUCTION JOINT



CONTRACTION JOINT (C.J.)  
OR LONGITUDINAL JOINT (L.J.)  
NO SAWN JOINTS WILL  
BE ALLOWED.

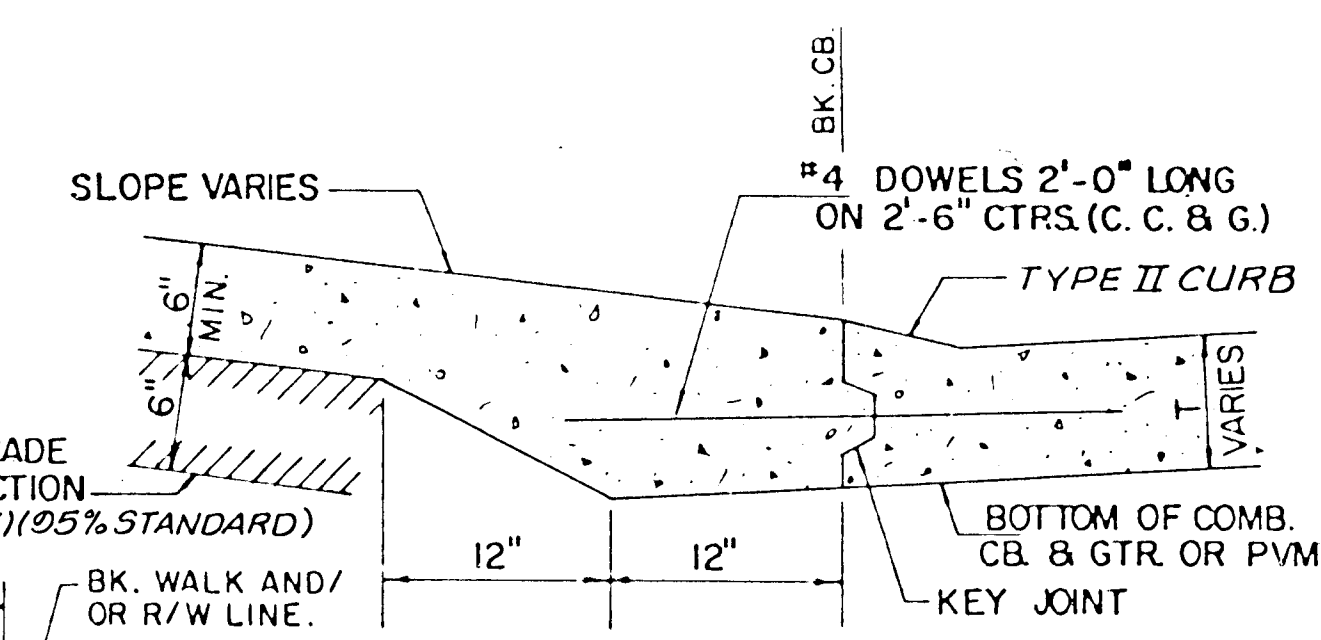


EXPANSION JOINT (E.J.)

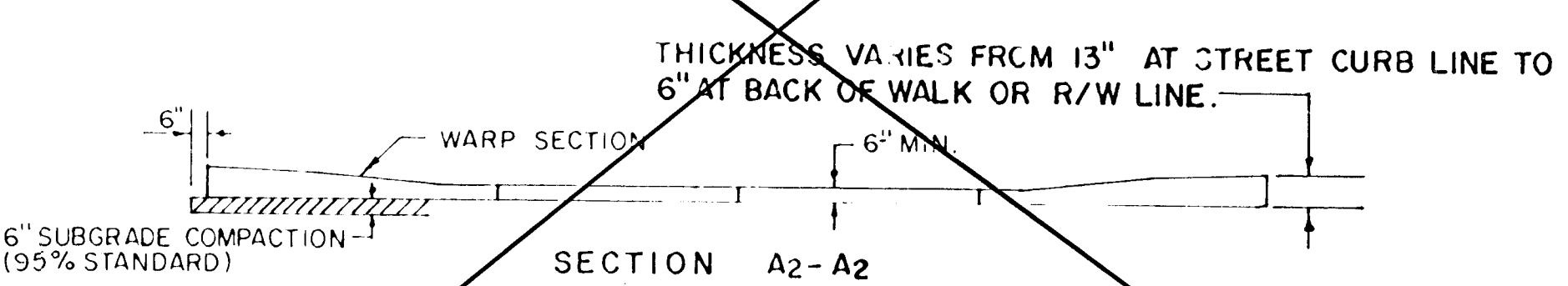
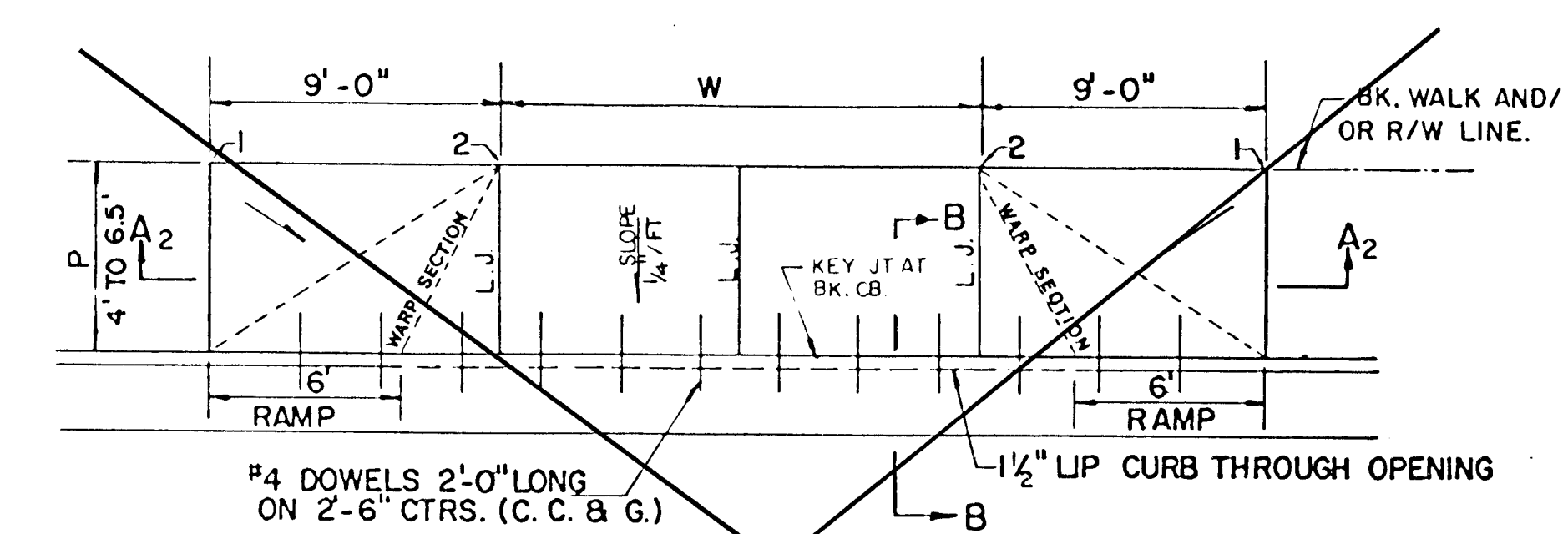


PARKING WIDTH "P"		9'	10'	11'	12'	13'	14.5'	20'	25'	30'	35'	40'	45'	50'
ABSOLUTE	MAX. DIST. OF PT. "WG" ABOVE OR BELOW TOP OF FULL CURB	0.27	0.27	0.32	0.37	0.52	0.80	1.35	1.85	2.35	2.85	3.35	3.85	4.35
OPTIMUM	MAX. DIST. OF PT. "WG" ABOVE OR BELOW TOP OF FULL CURB	0.27	0.27	0.32	0.37	0.52	0.62	0.96	1.22	1.48	1.74	2.00	2.26	2.52
OPTIMUM	MIN. DIST. OF PT. "WG" ABOVE OR BELOW TOP OF FULL CURB	0.19	0.21	0.23	0.25	0.27	0.30	0.42	0.52	0.62	0.72	0.82	0.92	1.02
ABSOLUTE	MIN. DIST. OF PT. "WG" ABOVE OR BELOW TOP OF FULL CURB	-0.19	-0.16	-0.13	-0.10	-0.06	0.00	0.00	0.15	0.25	0.35	0.45	0.55	0.65

(TYPE I) RADIUS RAMP DRIVES (P = 9.0' & GREATER)



BACK OF CURB DETAIL  
SECTION B - B (no scale)



PARKING WIDTH "P"		4'	4.5'	5'	5.5'	6'	6.5'
ABSOLUTE	MAX. DIST. OF PT. "WG" ABOVE TOP OF FULL CB.	0.08	0.09	0.10	0.12	0.13	0.14
OPTIMUM	MAX. DIST. OF PT. "WG" ABOVE TOP OF FULL CB.	0.08	0.09	0.10	0.12	0.13	0.14
ABSOLUTE	MIN. DIST. OF PT. "WG" BELOW TOP OF FULL CB.	-0.34	-0.32	-0.30	-0.28	-0.26	-0.22

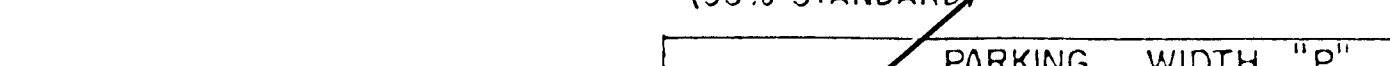
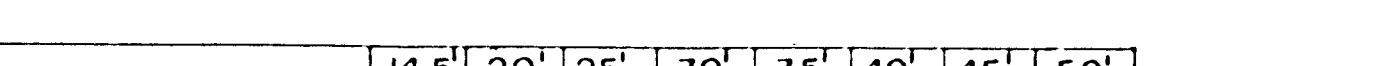
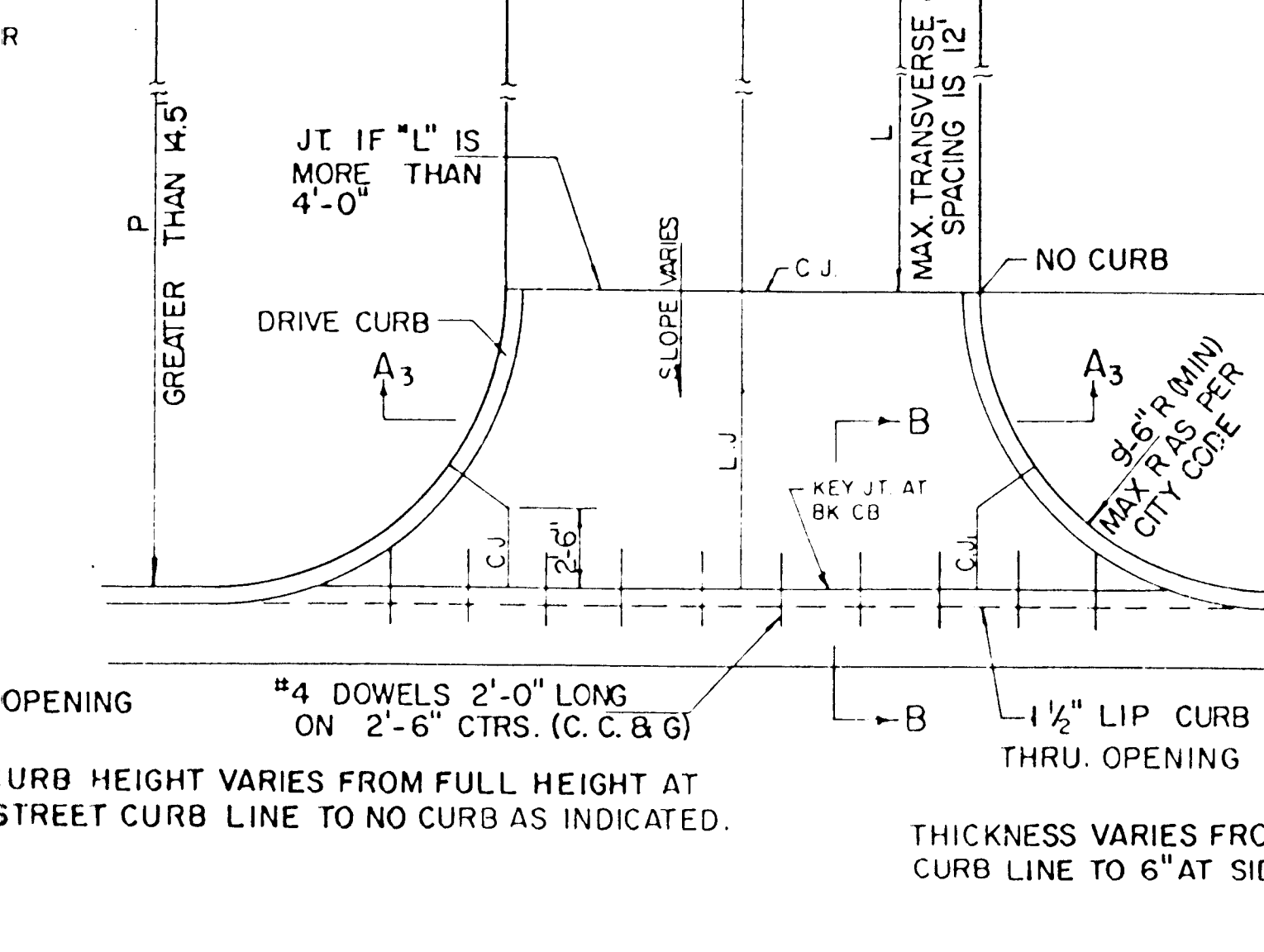
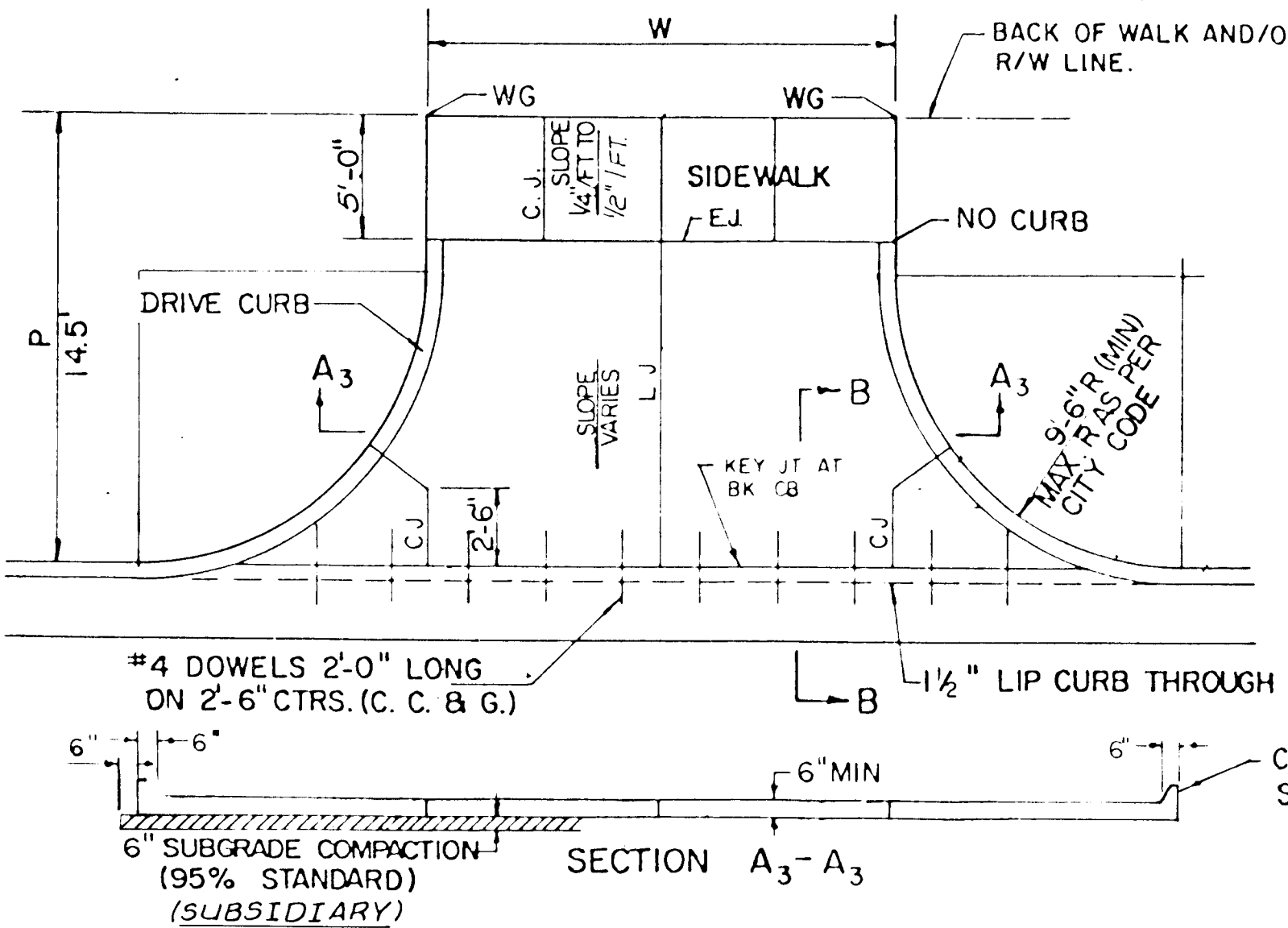
FULL RAMP DRIVE (P = 4.0' TO 6.5')

GENERAL NOTES

- DRIVEWAY CONSTRUCTION DETAILED ON THIS SHEET IS FOR USE WITH FULL HEIGHT STREET CURBS AND IN AREAS WITHOUT FULL WALK CONSTRUCTION IN THE PARKING. SEE OTHER DETAIL SHEETS FOR DRIVEWAY CONSTRUCTION WITH ROLL CURB AND/OR FULL WALK.
- ONE LONGITUDINAL JOINT SHALL BE CONSTRUCTED ALONG THE CENTERLINE OF DRIVES HAVING A "P" DIMENSION OF 24' OR LESS. TWO LONGITUDINAL JOINTS SHALL BE CONSTRUCTED WITH EQUAL SPACINGS NOT TO EXCEED 10' FOR DRIVES WITH A "P" DIMENSION GREATER THAN 24'.
- DRIVEWAY WIDTH DENOTED AS "W" ON THE DETAIL DRAWINGS SHALL BE A MINIMUM OF 10' AND A MAXIMUM OF 30'. THE MAXIMUM OPENING FOR RADIUS TYPE DRIVES WITH CURBS THROUGH THE RADIUS SHALL NOT EXCEED 52' AT THE STREET CURB LINE.
- CONTRACTION JOINT SPACING IN THE DRIVEWAY WALK SECTION SHALL BE A MINIMUM OF 3' AND A MAXIMUM OF 6' AND ARE TO BE EQUALLY SPACED WITHIN THIS RANGE. WALK SECTION SHALL BE CONSTRUCTED TO THE SAME THICKNESS AS THE DRIVEWAY.
- DOWN BARS SHALL BE OMITTED FROM THE KEYS CONSTRUCTION JOINT ALONG THE BACK OF THE STREET CURB LINE WHEN DRIVEWAYS ARE CONSTRUCTED IN CONJUNCTION WITH NEW CONCRETE PAVEMENT CONSTRUCTION.
- ADDITIONAL THICKNESS OF DRIVE AS INDICATED IN THE DRAWINGS WILL NOT BE PAID FOR DIRECTLY AND THIS COST SHALL BE INCLUDED IN THE UNIT PRICE BID FOR THE VARIOUS CONCRETE PAVEMENT BID ITEMS.
- ONE HALF INCH EXPANSION JOINTS SHALL BE INSTALLED WHEREVER DRIVE CONSTRUCTION ABUTS SIDEWALK. ONE HALF INCH EXPANSION JOINTS SHALL ALSO BE INSTALLED ALONG THE PROPERTY LINE AND/OR BACK OF WALK LINE WHEN DRIVE CONSTRUCTION ALONG THIS LINE ABUTS CONCRETE PARKING LOTS OR CONCRETE DRIVE EXTENSION.
- ALL DRIVEWAYS SHALL BE A MINIMUM OF 6" IN THICKNESS AND SHALL BE REINFORCED WITH #4 DOWELS PER CITY CODE. DRIVEWAYS MAY BE CONSTRUCTED THICKER THAN 6" WHEN PROPERLY AUTHORIZED BY THE PROPERTY OWNER WITH THE ENGINEER'S CONCURRENCE. PAYMENT FOR ADDITIONAL THICKNESS SHALL BE MADE BY A SEPARATE, PRIVATE CONTRACT.
- OPTIMUM DRIVEWAY ELEVATIONS SHOWN IN THE TABLES ARE TO BE USED WHEREVER POSSIBLE. ABSOLUTE MAXIMUM AND MINIMUM ELEVATIONS ARE TO BE USED ONLY WHEN THESE VALUES WILL PERMIT NEW CONSTRUCTION TO MATCH EXISTING DRIVES OR PARKING LOTS. VALUES SHOWN IN THE TABLES ARE BASED ON A FULL CURB HEIGHT ELEVATION OF 0.55' ABOVE THE GUTTER FLOW LINE AND MUST BE ADJUSTED ACCORDINGLY FOR OTHER CURB HEIGHTS. VALUES SHOWN IN THE TABLES WITH MINUS SIGNS INDICATE ELEVATIONS BELOW TOP OF FULL HEIGHT CURB.

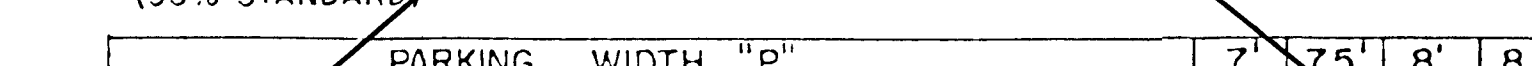
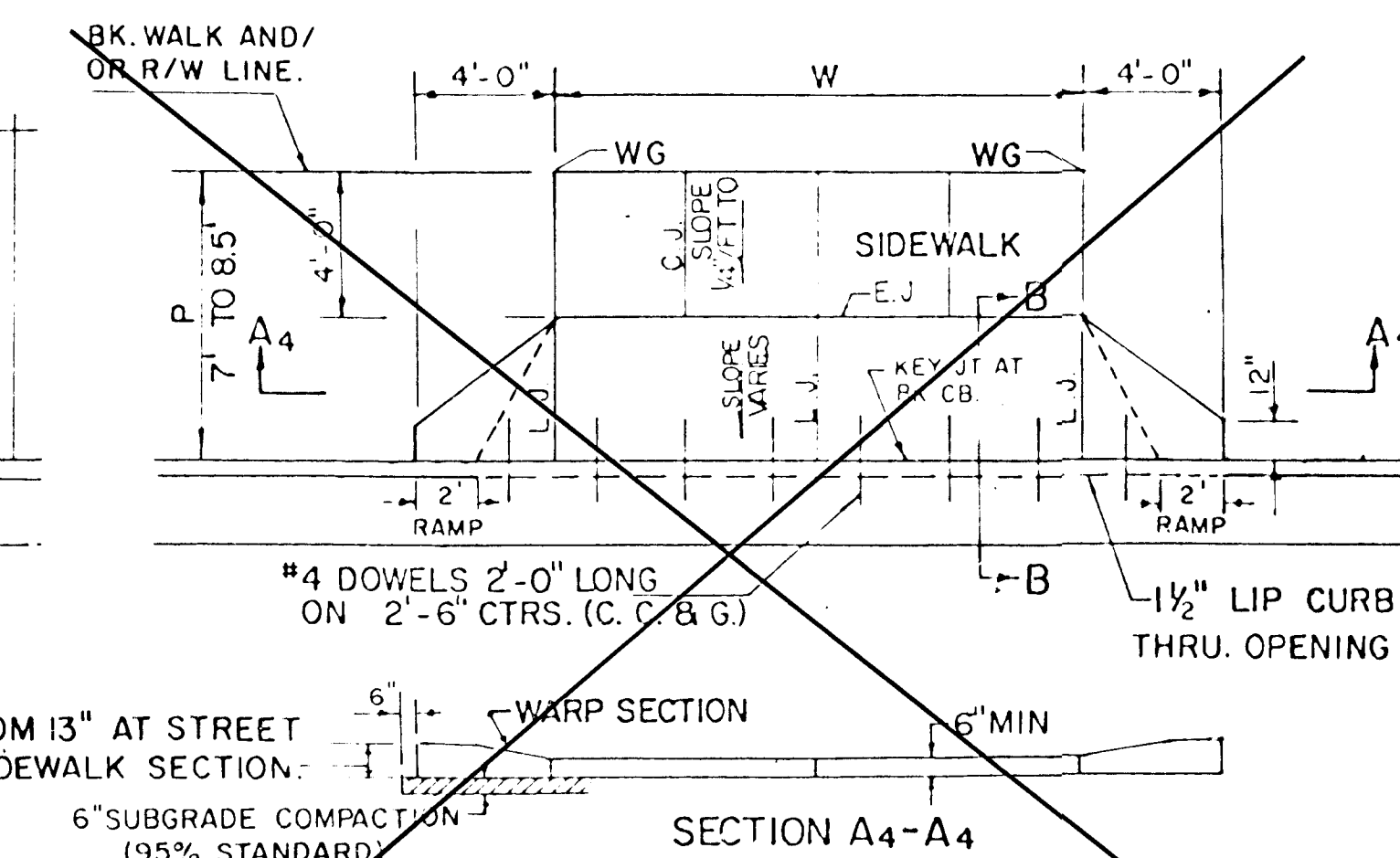
REVISED APRIL 1994 (JKB)

SCALE: 1" = 5'



PARKING WIDTH "P"		14.5'	20'	25'	30'	35'	40'	45'	50'
ABSOLUTE	MAX. DIST. OF PT. "WG" ABOVE TOP OF FULL CB.	0.72	1.27	1.77	2.27	2.77	3.27	3.77	4.27
OPTIMUM	MAX. DIST. OF PT. "WG" ABOVE TOP OF FULL CB.	0.70	1.04	1.30	1.56	1.82	2.08	2.34	2.60
OPTIMUM	MIN. DIST. OF PT. "WG" ABOVE TOP OF FULL CB.	0.30	0.42	0.52	0.62	0.72	0.82	0.92	1.02
ABSOLUTE	MIN. DIST. OF PT. "WG" ABOVE TOP OF FULL CB.	0.00	0.00	0.15	0.25	0.35	0.45	0.55	0.65

(TYPE II) FULL RADIUS DRIVES (P = 14.5' & GREATER)



PARKING WIDTH "P"		7'	7.5'	8'	8.5'
ABSOLUTE	MAX. DIST. OF PT. "WG" ABOVE TOP OF FULL CB.	0.08	0.09	0.18	0.22
OPTIMUM	MAX. DIST. OF PT. "WG" ABOVE TOP OF FULL CB.	0.08	0.02	0.18	0.22
OPTIMUM	MIN. DIST. OF PT. "WG" BELOW TOP OF FULL CB.	-0.15	-0.16	-0.17	-0.17
ABSOLUTE	MAX. DIST. OF PT. "WG" BELOW TOP OF FULL CB.	-0.25	-0.20	-0.20	-0.20

FULL RAMP DRIVE (P = 7.0' TO 8.5')

**STANDARD DRIVE ENTRANCES**  
**FULL HEIGHT CURB**  
CITY OF WICHITA, KANSAS  
PROJECT NUMBER