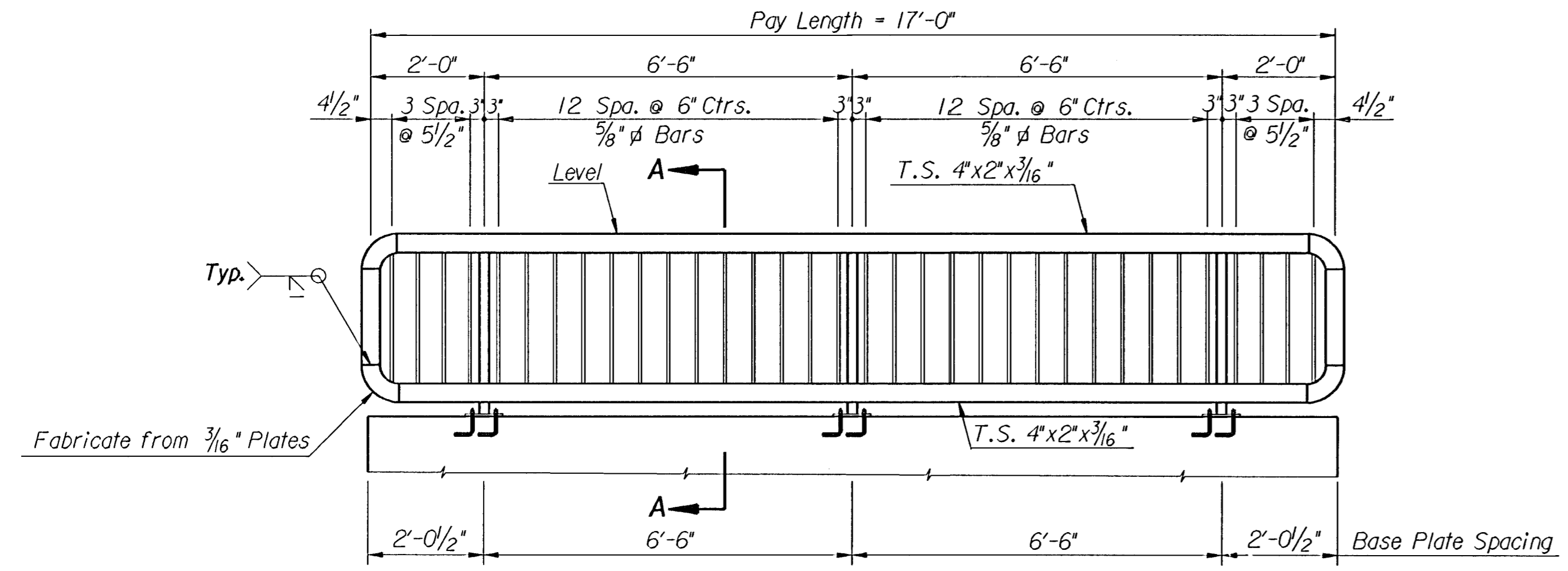
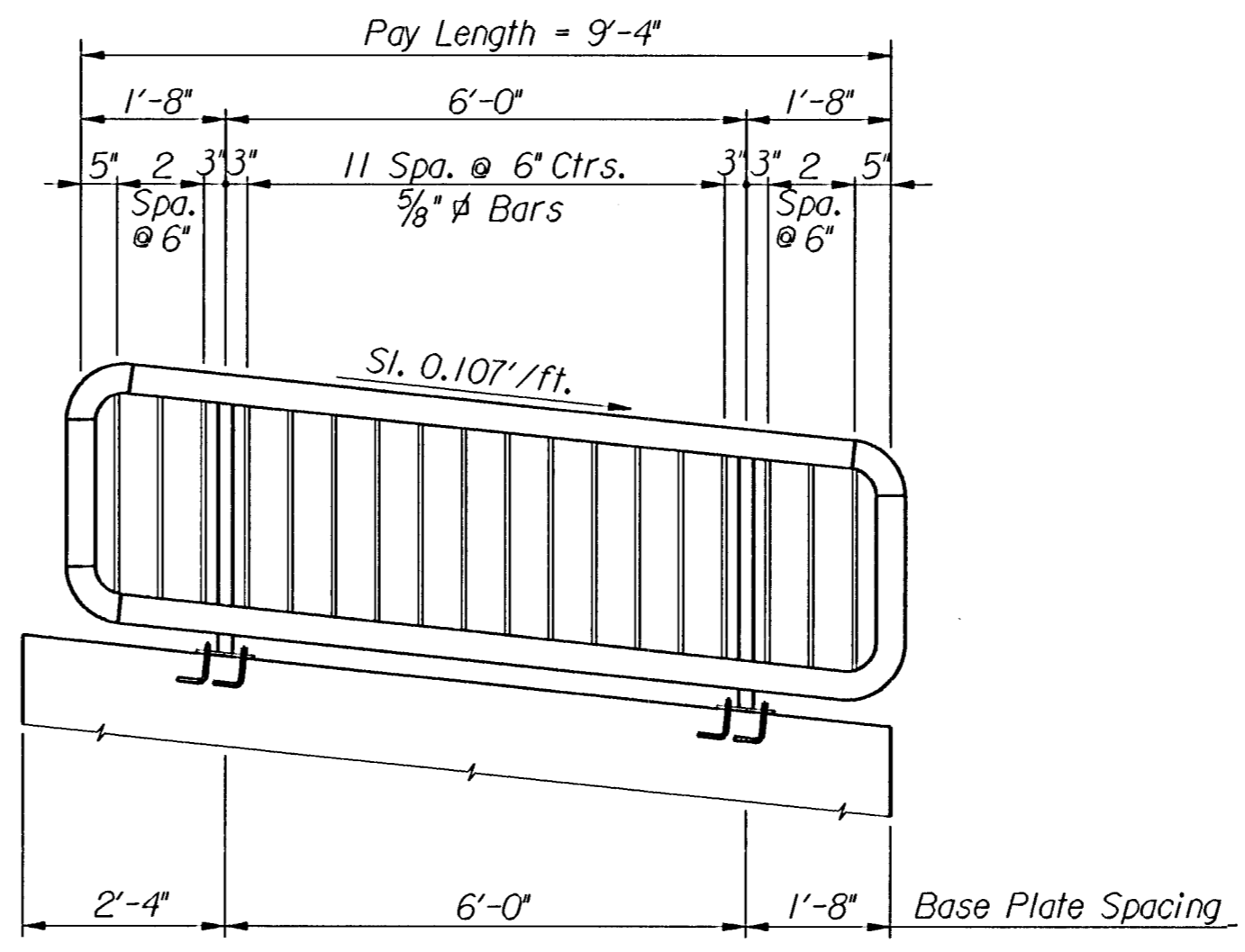


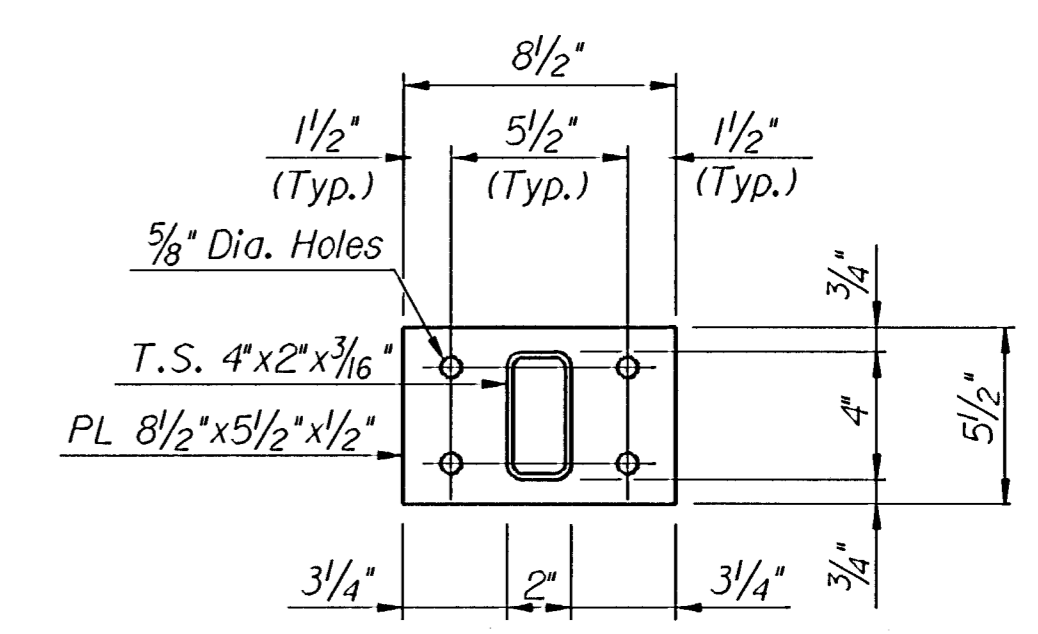
PROJECT NO.	YEAR	SHEET NO.	TOTAL SHEETS
618-34	1998	57	100



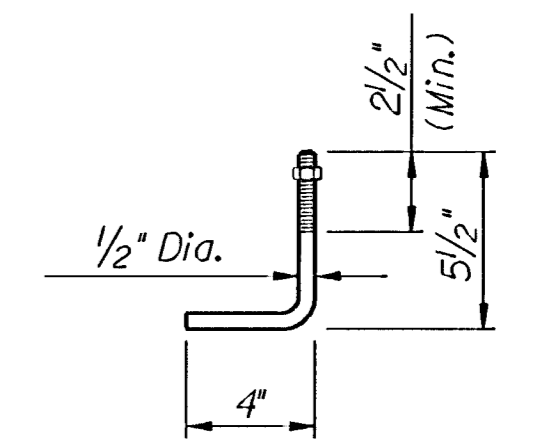
VIEW B-B



VIEW C-C



BASE PLATE
7 Required

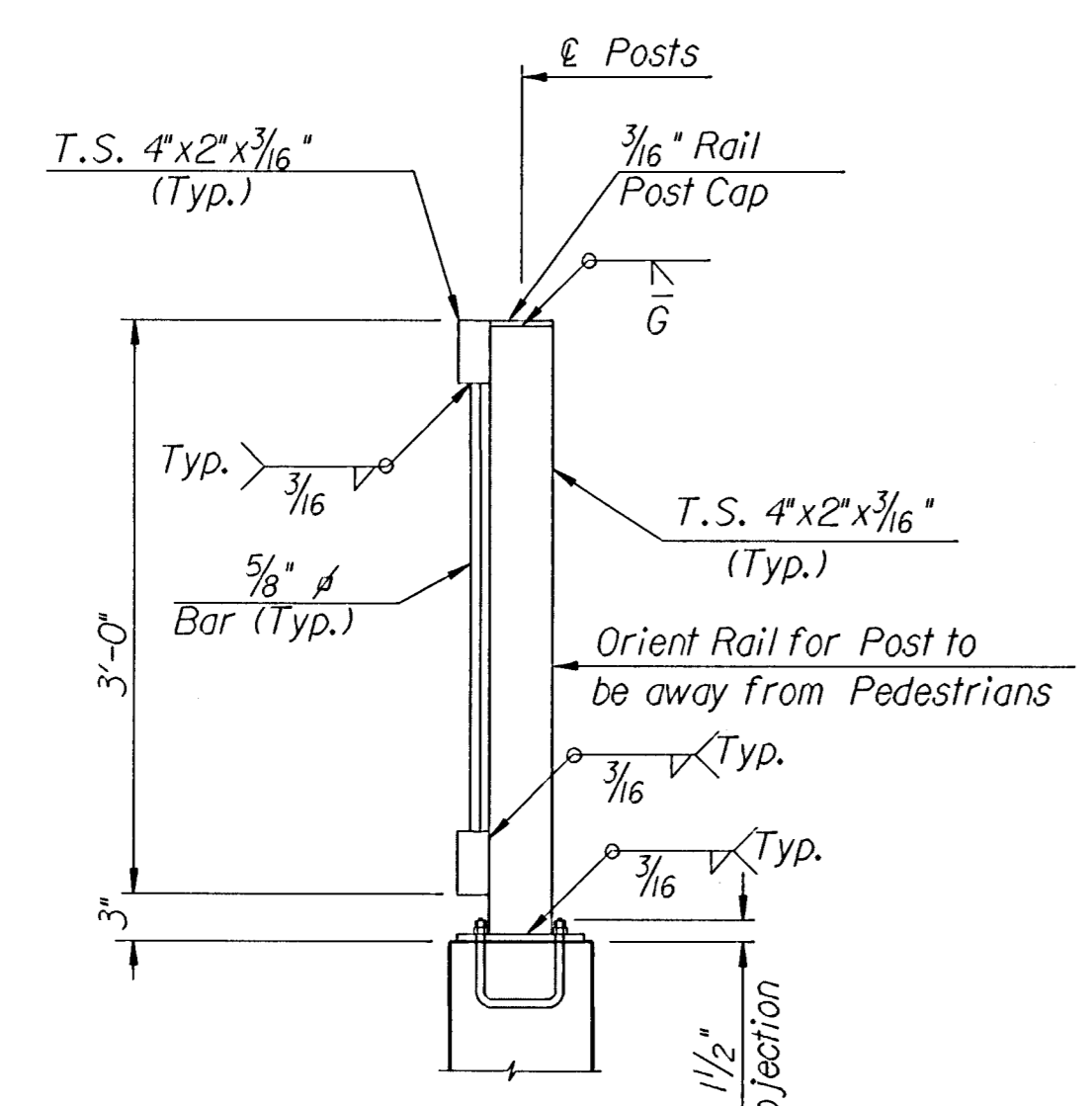


Galvanized (ASTM A153)
(May substitute expandable anchor bolts when approved by the Engineer)

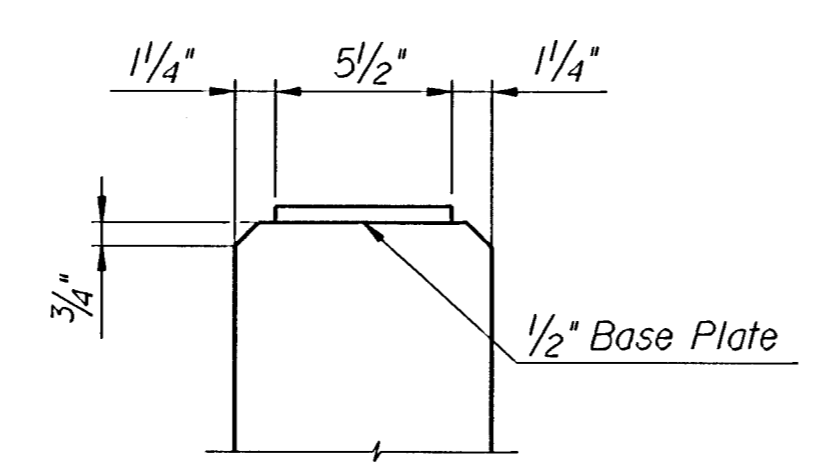
ANCHOR BOLT

GENERAL NOTES

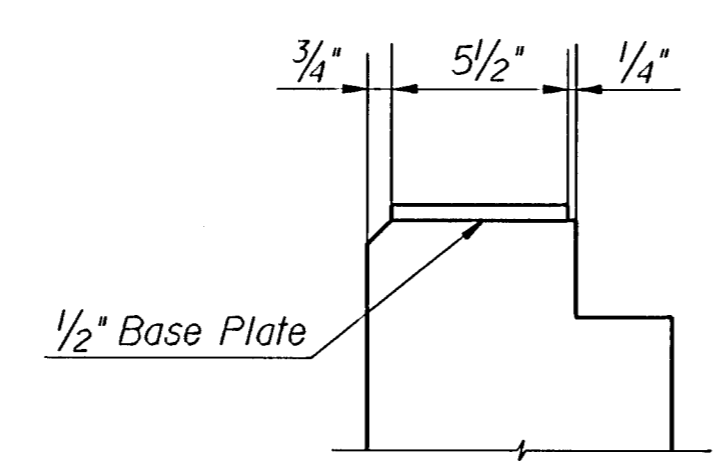
- The horizontal members of the rail and posts shall be hollow structural tubing. All structural steel and tubing shall comply to A.S.T.M. designation A36 or A500 Grade B respectively.
- Rail shall be fabricated in lengths as shown.
- Posts and bars shall be set vertical.
- The paint system shall be provided by Carboline: 350 Hanley Industrial Ct.: St. Louis, Mo. The application will be in accordance with the manufacturers recommendations. The paint procedure is as follows:
 - Abrasive blast to commercial finish SSPC-SP6 to obtain a surface profile of 1 1/2 mils.
 - Apply 2 coats of Carboline GP 818 Primer (2 to 4 mils per coat).
 - Apply one topcoat of Subsil 30 HS (2 to 3 mils) (Color Carboline-336). An approved substitution of the total paint system will be allowed with the approval of the Engineer.
- Material and construction shall conform to the structural welding code A.W.S. D1.1-88.
- Shop details must be submitted and approved by the Engineer.
- The Handrail is Subsidiary to the bid item "Ditch Inlet Type I".



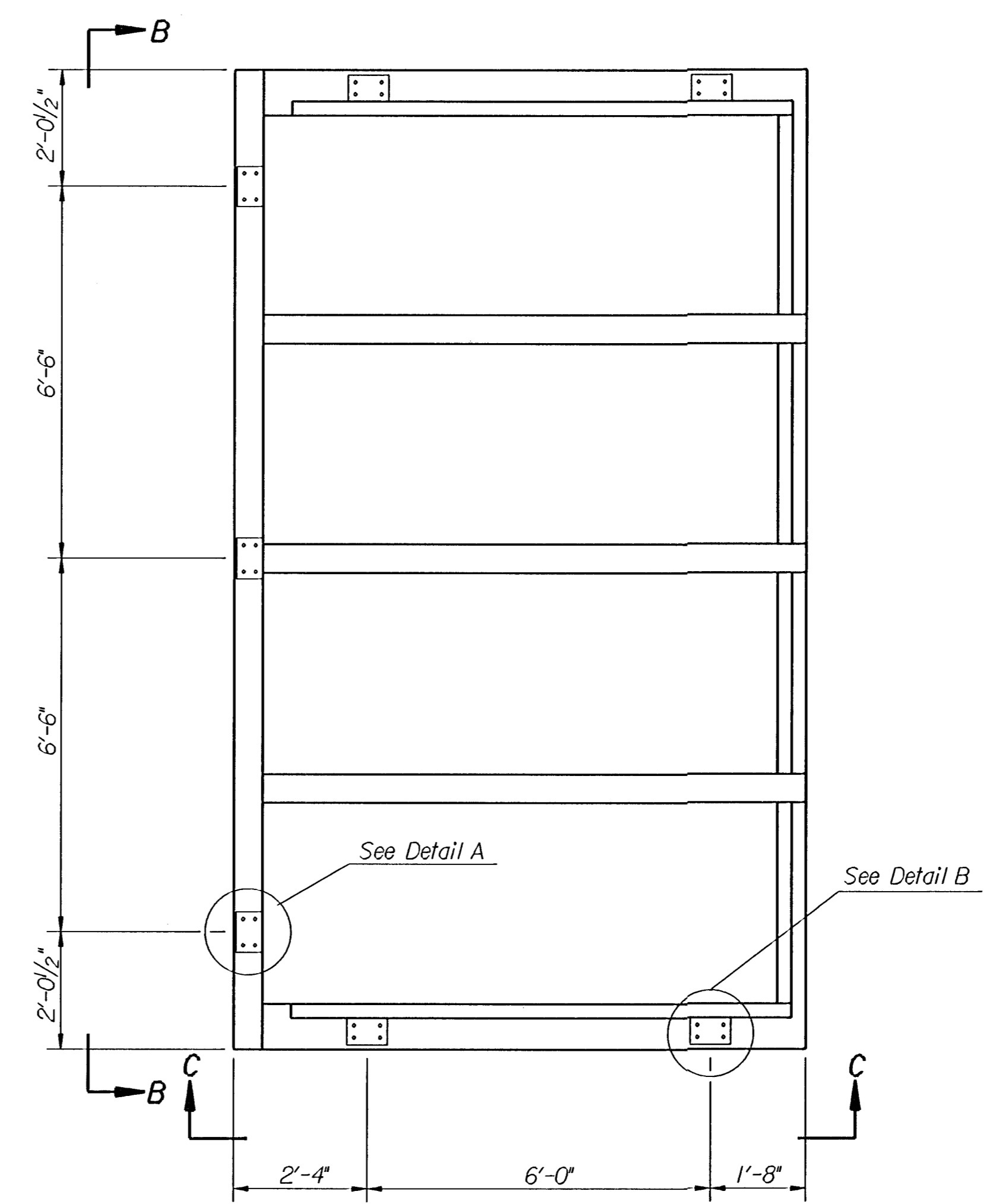
SECTION A-A



DETAIL A



DETAIL B



BASE PLATE LAYOUT

I:\995\95297\002\handrail.dgn
Plotted by: DJW 8-5-97

Revisions		By	Date
SEDGWICK COUNTY BUREAU OF PUBLIC SERVICES			
HANDRAIL DETAILS			
PROJECT NO. 618-34		SEDGWICK COUNTY	
PROFESSIONAL ENGINEERING CONSULTANTS, P.A.			
WICHITA, KANSAS			
Designed by	PDF	Checked by	
Drawn by	DJW	Date	JUNE 1997
		Job No.	95297-2