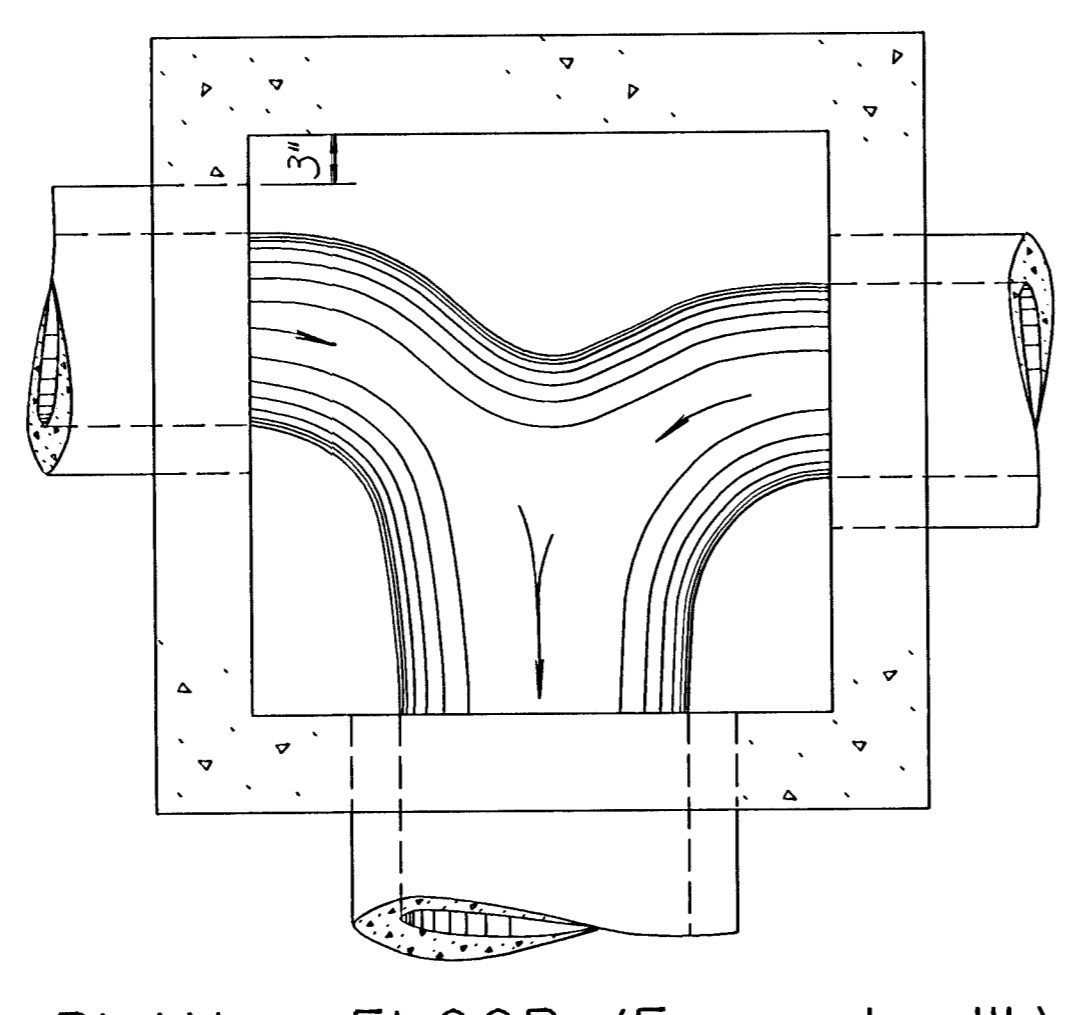
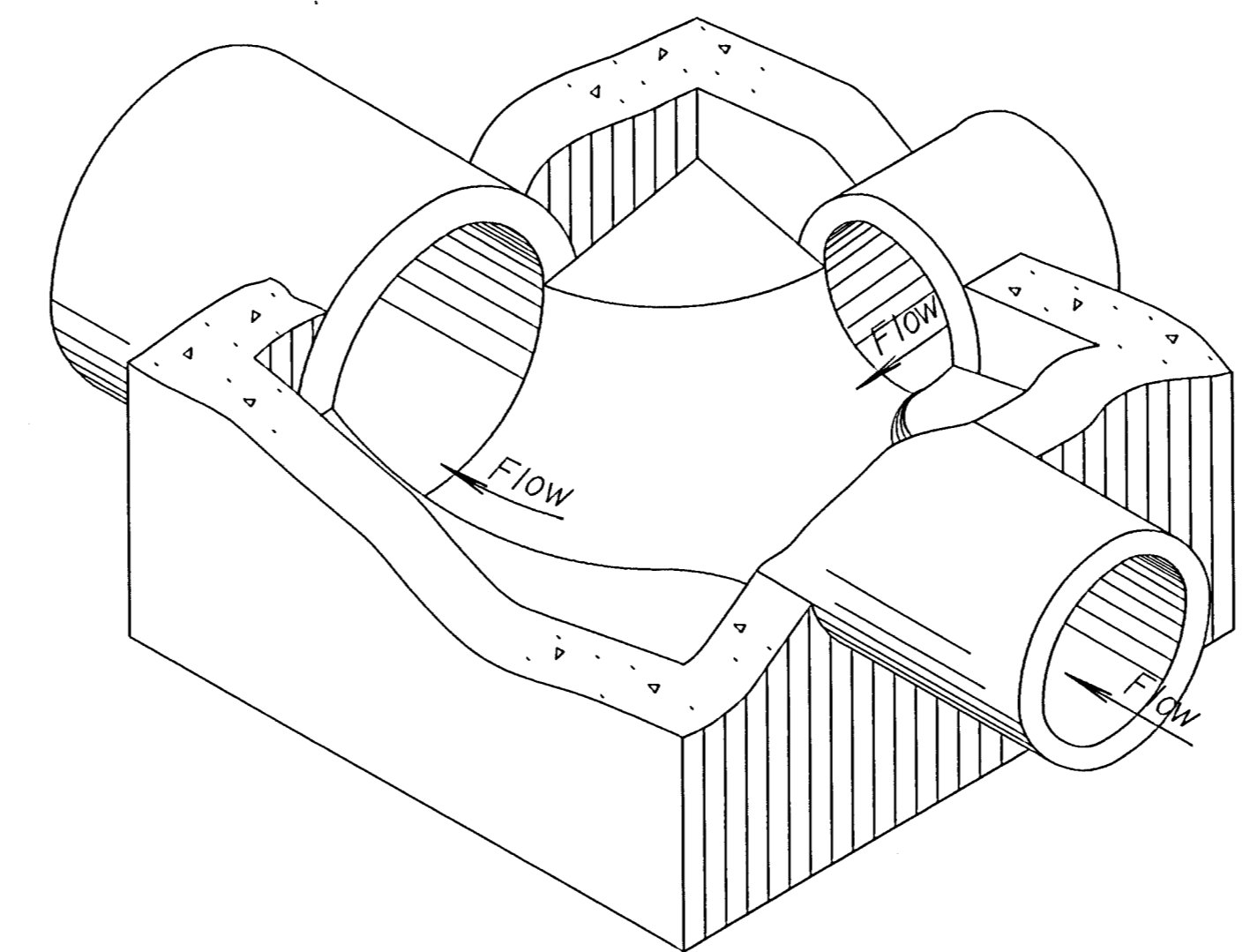


PLAN - FLOOR (Example I)



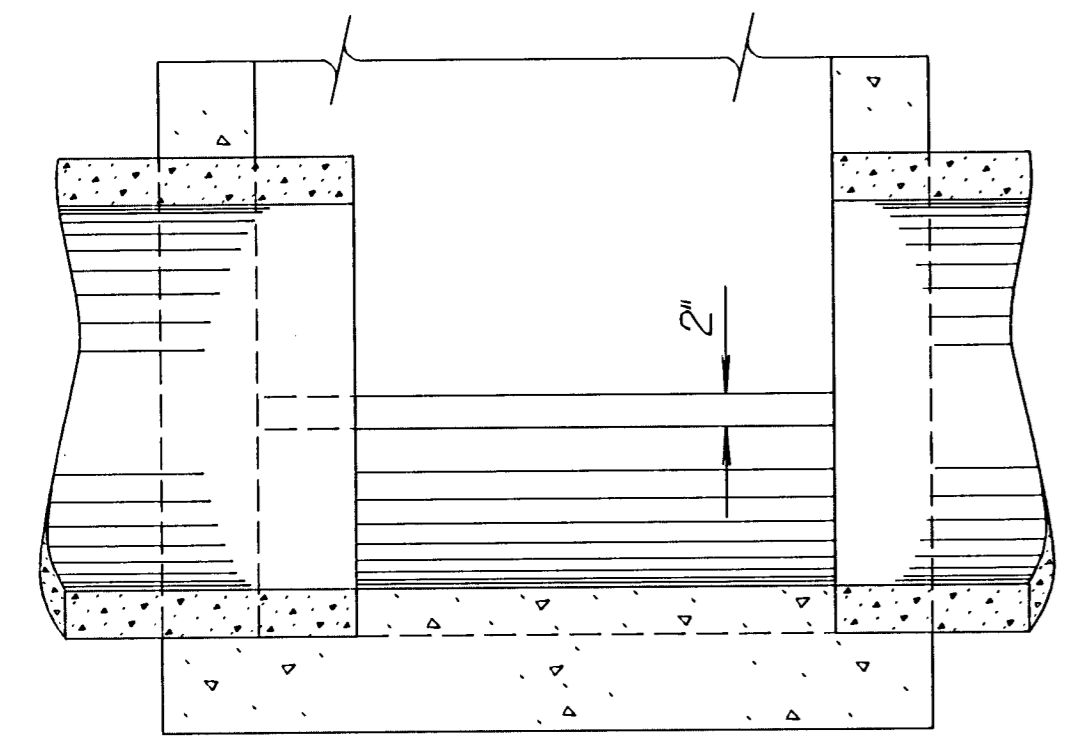
PLAN - FLOOR (Example III)



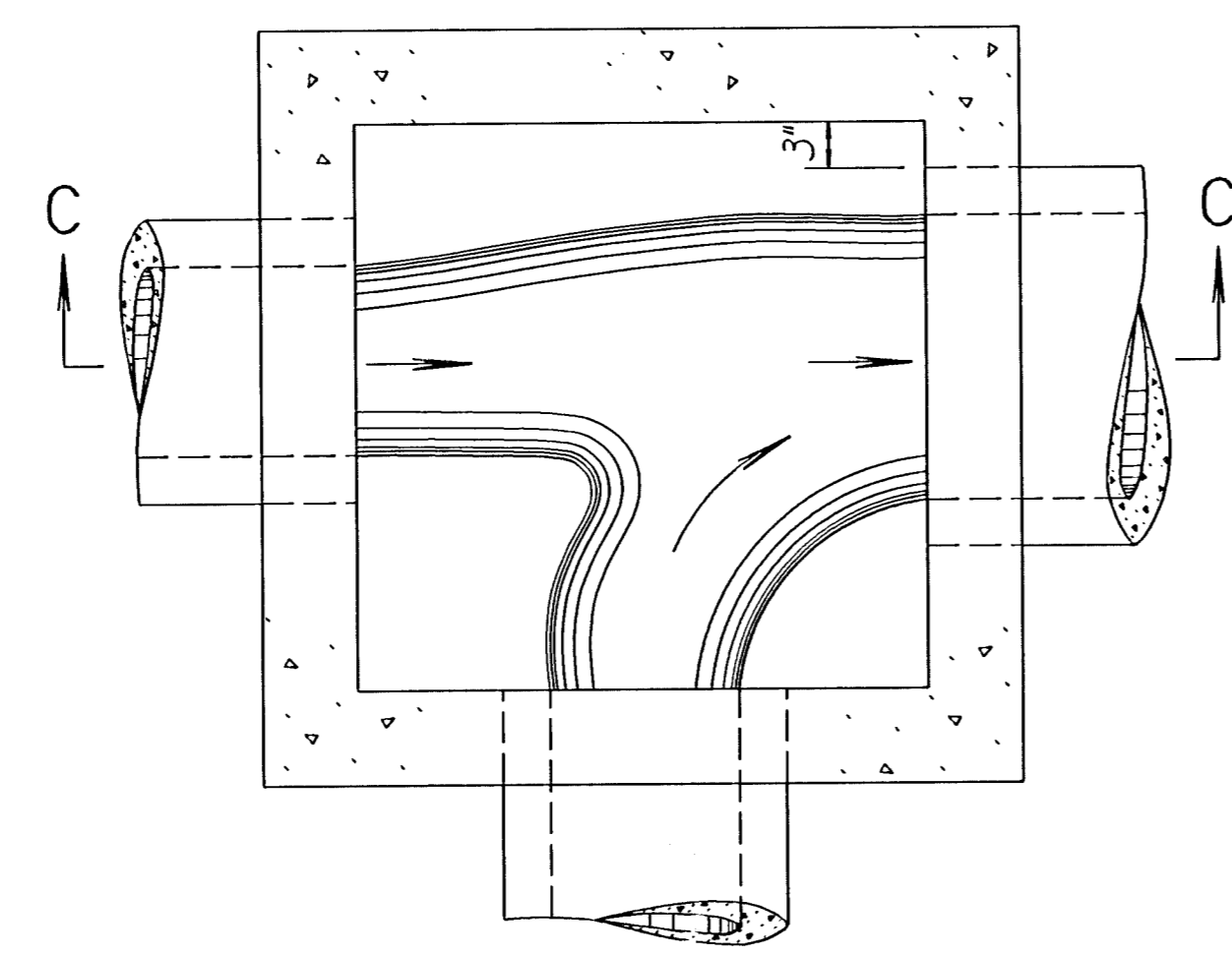
ISOMETRIC VIEW (Example IV)

Floor of manhole shall be shaped as shown in the examples to increase hydraulic efficiency.

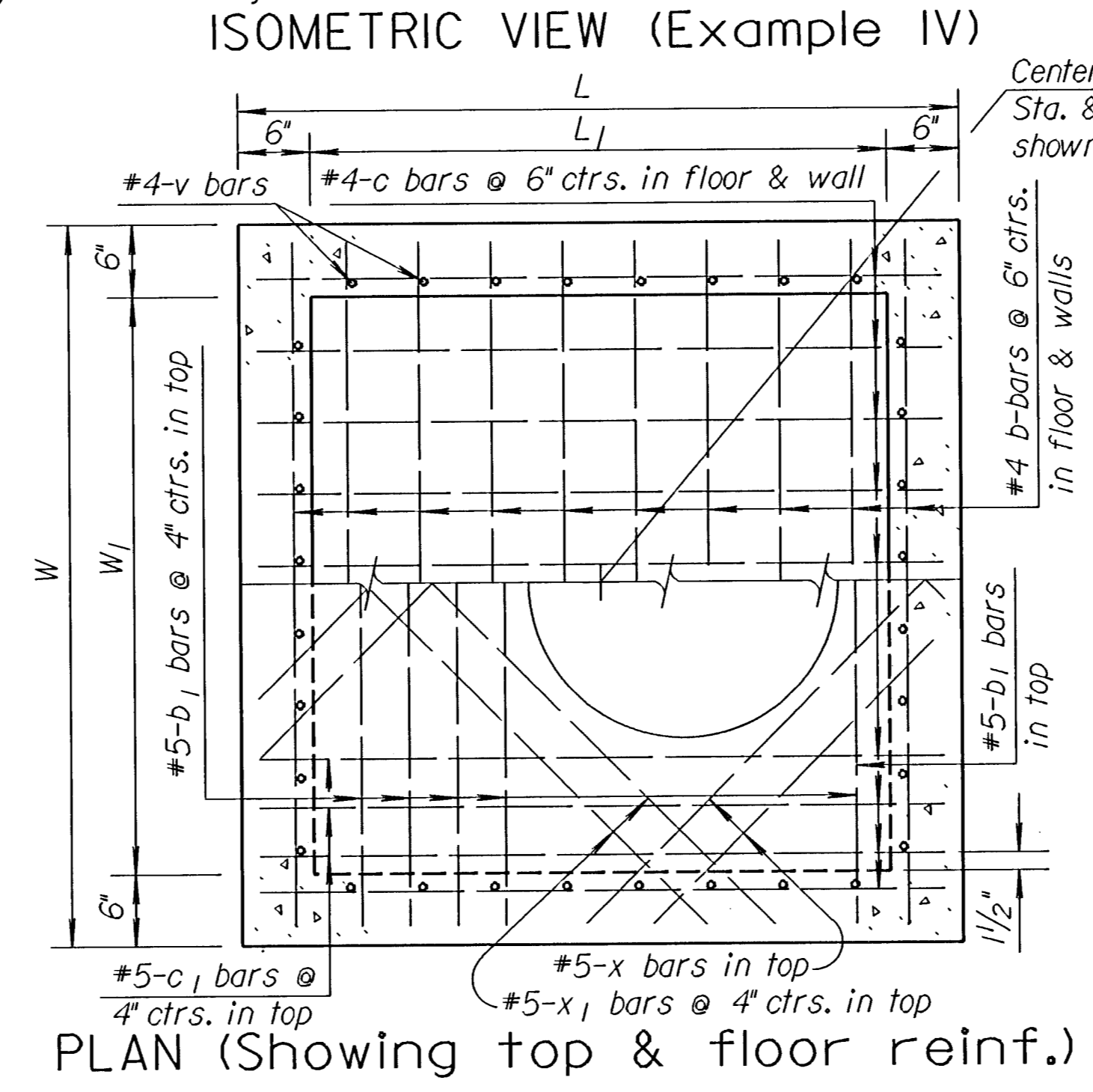
Note: Use Class A Concrete throughout. All exposed edges shall be finished with an edging tool.
 At the contractor's option Class A Concrete (AE) or mix used in concrete pavement may be used throughout.
 In general, pipes will enter and leave manhole at various positions. Where possible bend bars around pipes.
 Floor of manhole shall be shaped as shown in various "EXAMPLES" with unreinforced Class "A" Concrete.
 Manhole opening and steps, where used, shall be placed to afford easy access to top of shaped invert.
 Top reinforcing bars shall be adjusted accordingly.
 All castings shall be gray iron and shall comply with the KDOT Standard Specifications.
 No deductions in concrete quantities shall be made for pipe openings or additions to concrete quantities shall be made for shaping floor of manholes.
 The top of the manhole shall be sloped slightly to approximately fit the ground line or other condition as directed by the Engineer.
 Dimensions and weights of cast iron as shown on this sheet are minimum. Larger dimensions and/or heavier weights of cast iron may be used.
 The Contractor has the option of using precast manholes, as approved by the Engineer.
 Precast adjusting rings shall meet requirements of ASTM C-478 standard specifications for Precast Manholes. Grade rings shall be formed with tongue and groove and set in mortar. Use combination of 4", 5" or 6" grade rings to meet required rim elevation ($\pm 1/4"$).



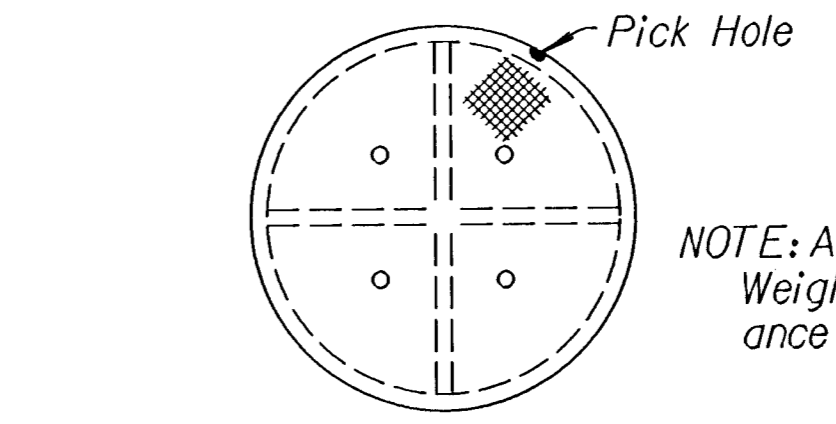
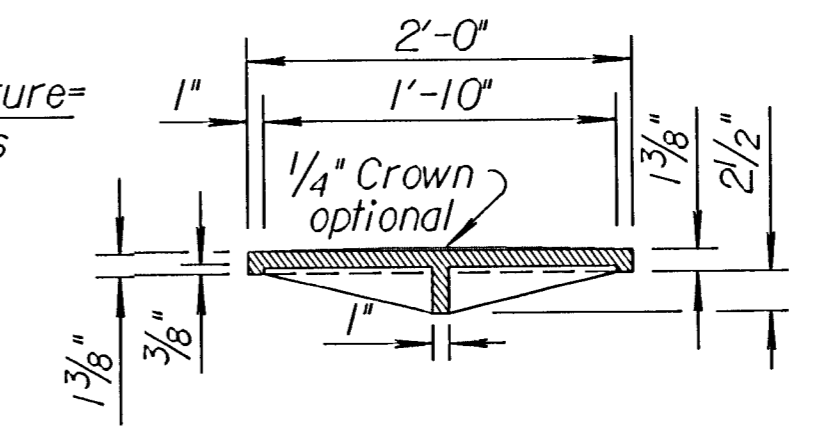
SECTION A-A (Example I)



PLAN - FLOOR (Example IV)

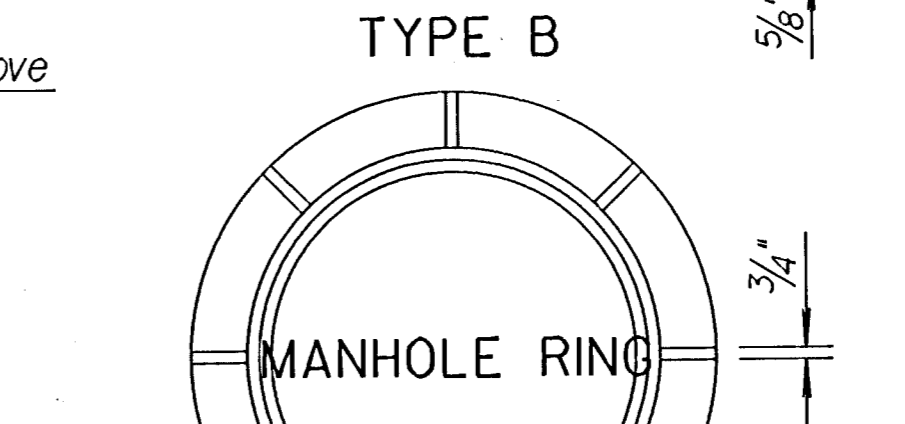
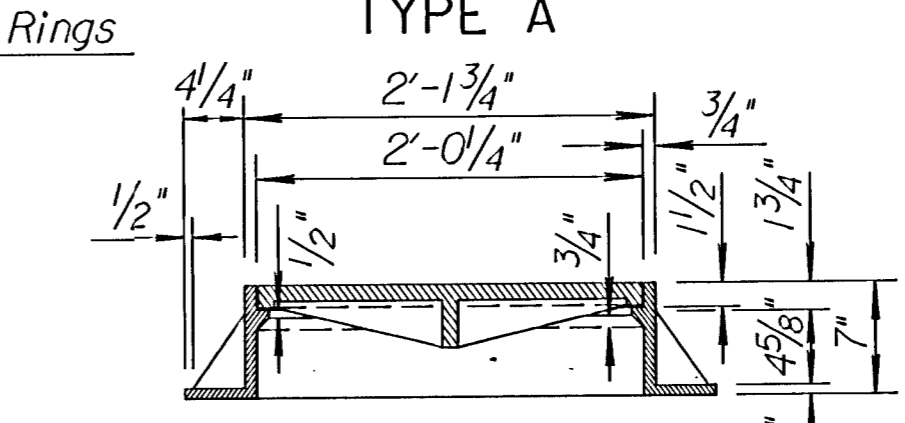
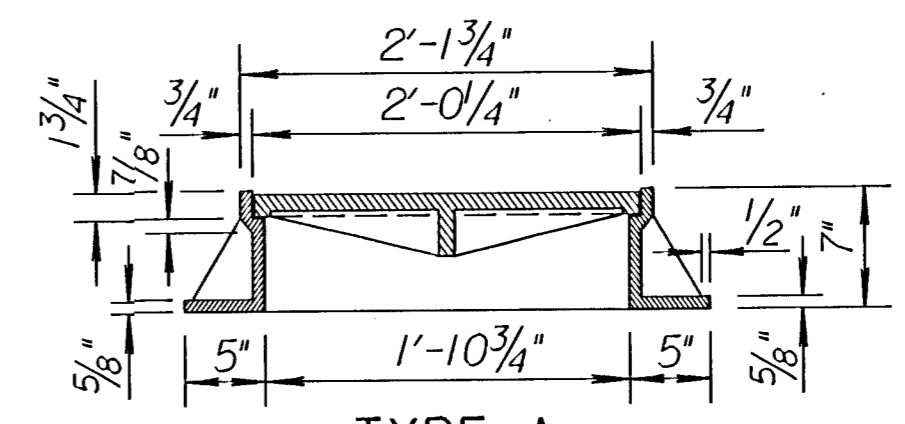


PLAN (Showing top & floor reinf.)

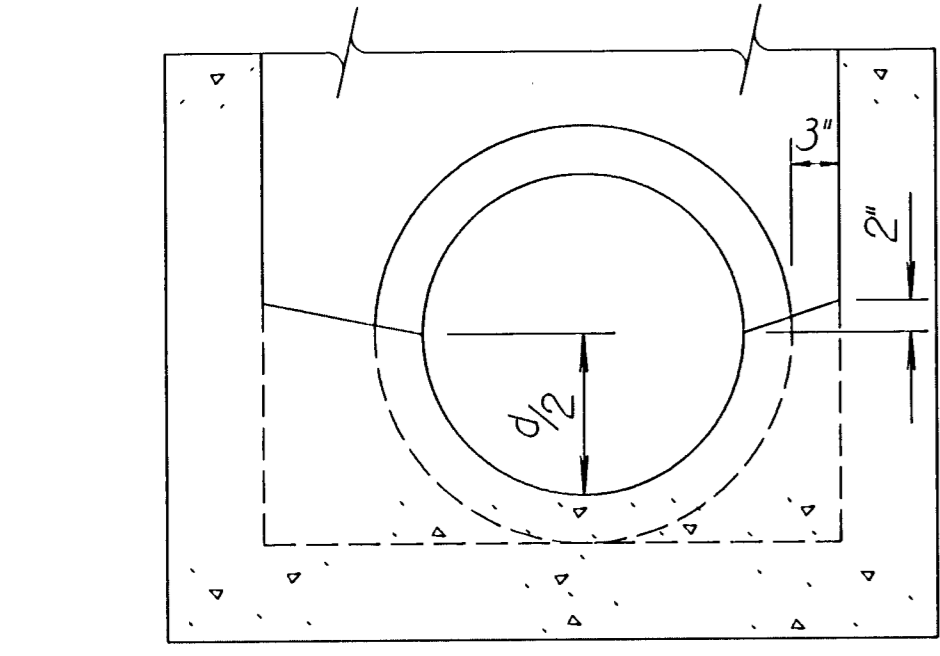


MANHOLE COVER TYPE A & B
 (Weight=134 lbs.; without 1/4" Crown= 125 lbs.)

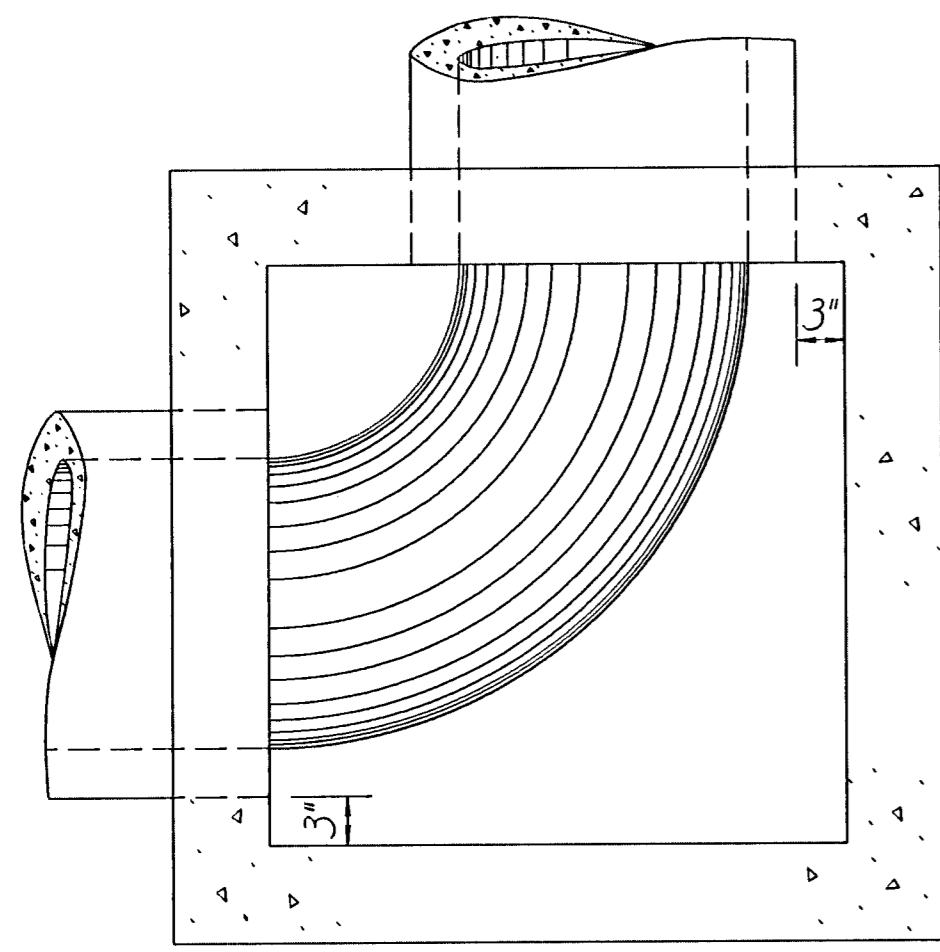
NOTE: All manhole castings are cast iron. Weight of castings includes no allowance for fillets and overruns.



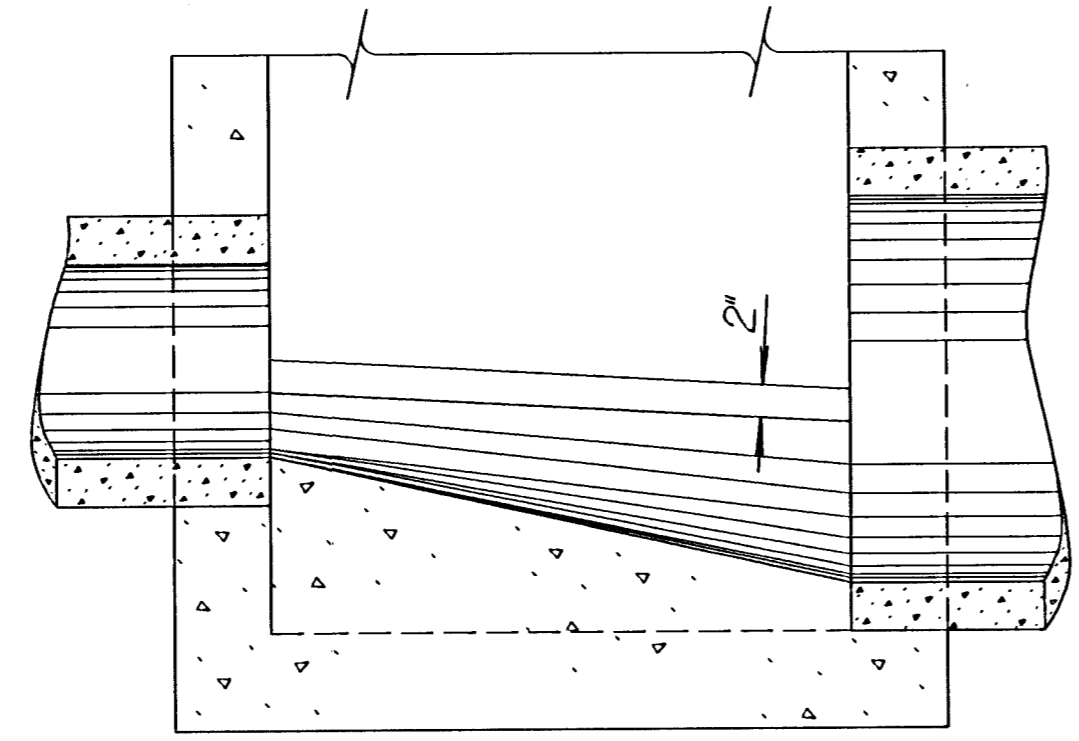
(Type A Ring= 192 lbs., Type B Ring= 198 lbs.)
HEAVY TYPE MANHOLE COVER AND RING
 Note: Either Type A or Type B may be used.



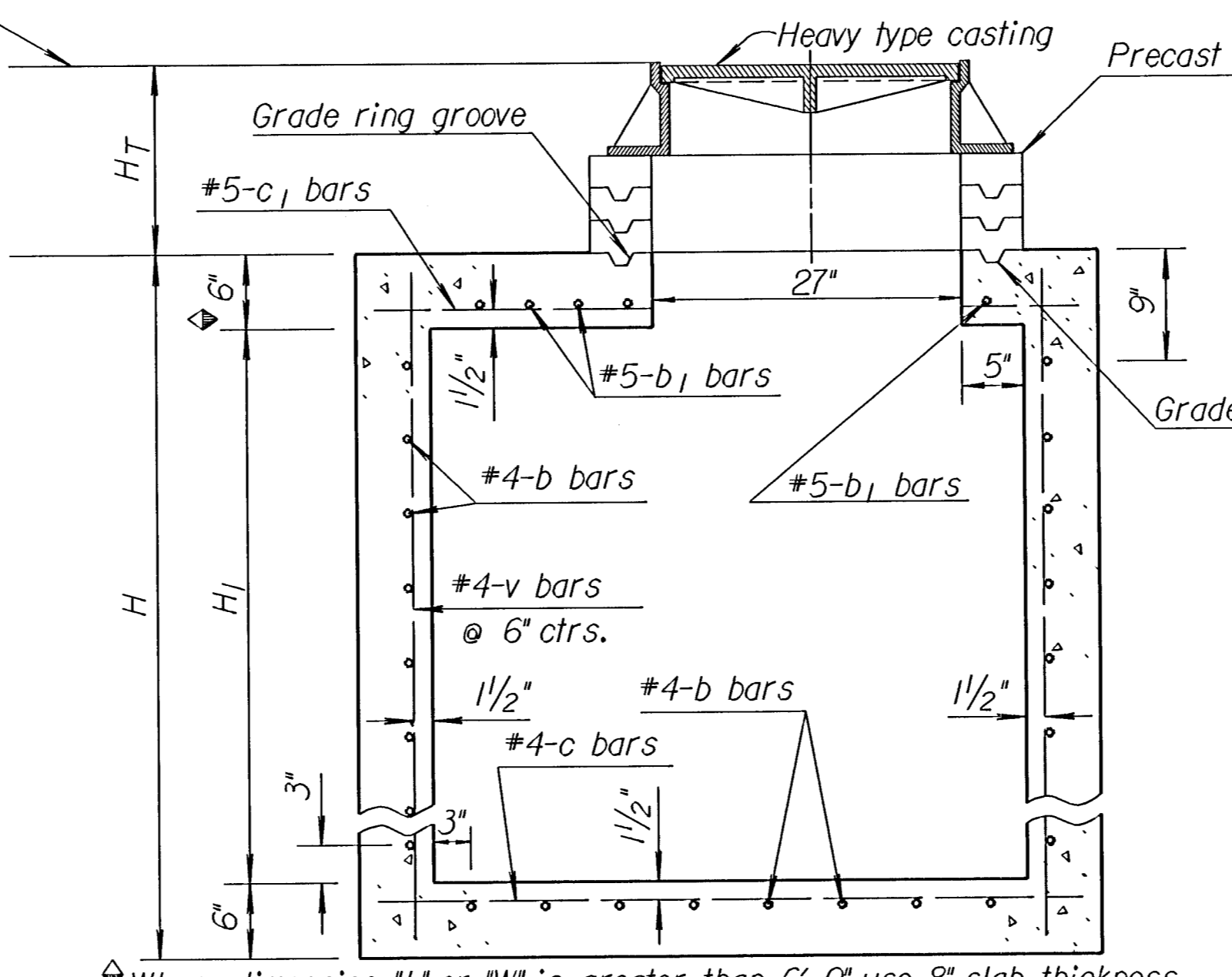
SECTION B-B (Example I)



PLAN - FLOOR (Example II)



SECTION C-C (Example IV)



SECTION (Exclusive of floor shaping)

Where dimension "L" or "W" is greater than 6'-0" use 8" slab thickness.

Drawn By: \$USER\$ (Plotted: maf 7-25-97)
 File: I:\1995\95297\002\standard\rd633.dgn

29	12-27-93	Delete paint note	R.J.S.	J.O.B.
28	1-30-92	Rev. paint&step notes, ent. on CADD	R.J.S.	J.O.B.
NO.	DATE	REVISIONS	BY	APP'D

KANSAS DEPARTMENT OF TRANSPORTATION

REINFORCED CONCRETE MANHOLE

RD633

FHWA APPROVAL	2-15-94	APP'D James O. Brewer
DESIGNED	DETAILED	QUANTITIES
DESIGN CK.	DETAIL CK.	QUAN. CK.

TRACED Bowser
TRACE CK. Seltz