

STATE	PROJECT NO.	YEAR	SHEET NO.	TOTAL SHEETS
KANSAS	472-85394	2020	I	44

CITY OF WICHITA, KANSAS

HOOVER ROAD MULTI-USE PATH AND TRAFFIC SIGNAL (PHASE 1) ZOO BLVD. TO 29TH STREET NORTH

GARY JANZEN, P.E. – CITY ENGINEER
C.O.W. PROJECT NO. 472-85394
O.C.A. NO. 707128
SEDGWICK COUNTY

GRADING
MULTI-USE PATH
SEEDING
TRAFFIC SIGNALIZATION
SIGNING & PAVEMENT MARKING

INDEX OF SHEETS

1	Title Sheet
2	General Notes
3	Coordinate Control & Geometric Data
4	Typical Sections
5	Plan Sheet
6 - 8	Sidewalk, Driveway, & Pavement Layout Sheets
9 - 10	Sidewalk Details
11	Curb & Gutter Details
12	Summary of Storm Sewer
13	Slope Protection Detail
14 - 17	Erosion Control Details
18	Summary of Quantities
19	Traffic Signal Plan Sheet
20	Traffic Signal Wiring Diagram
21	Traffic Signal Quantities
22 - 26	Traffic Signal Standards
27 - 28	Traffic Signal Specifications
29 - 31	Pavement Marking Standards
32	Pavement Marking & Signing Sheet
33	Signing Detail
34	Construction Phasing
35 - 42	Traffic Control Standards
43 - 44	Cross Sections

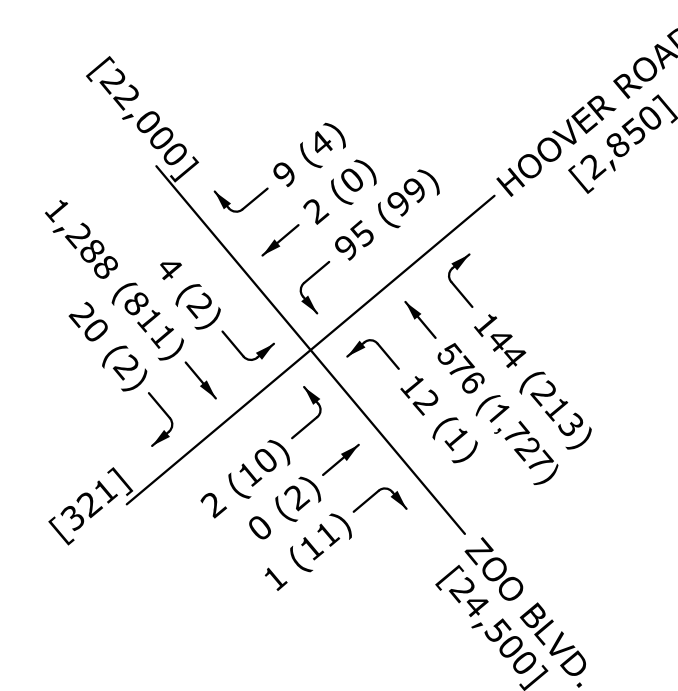
DESIGN DESIGNATION

ZOO BOULEVARD
AADT (2017) = 24,000
AADT (2047) = 29,500
TRUCKS = 14%
V = 45 MPH

HOOVER ROAD
AADT (2017) = 2,850
AADT (2047) = 5,100
TRUCKS = 14%
V = 35 MPH
MULTI-USE PATH V = 18 MPH

PEAK HOUR VOLUMES

A.M. (P.M.) PEAK HOUR VOLUME
[1341] 24-HOUR VOLUME (TWO-WAY ADT)

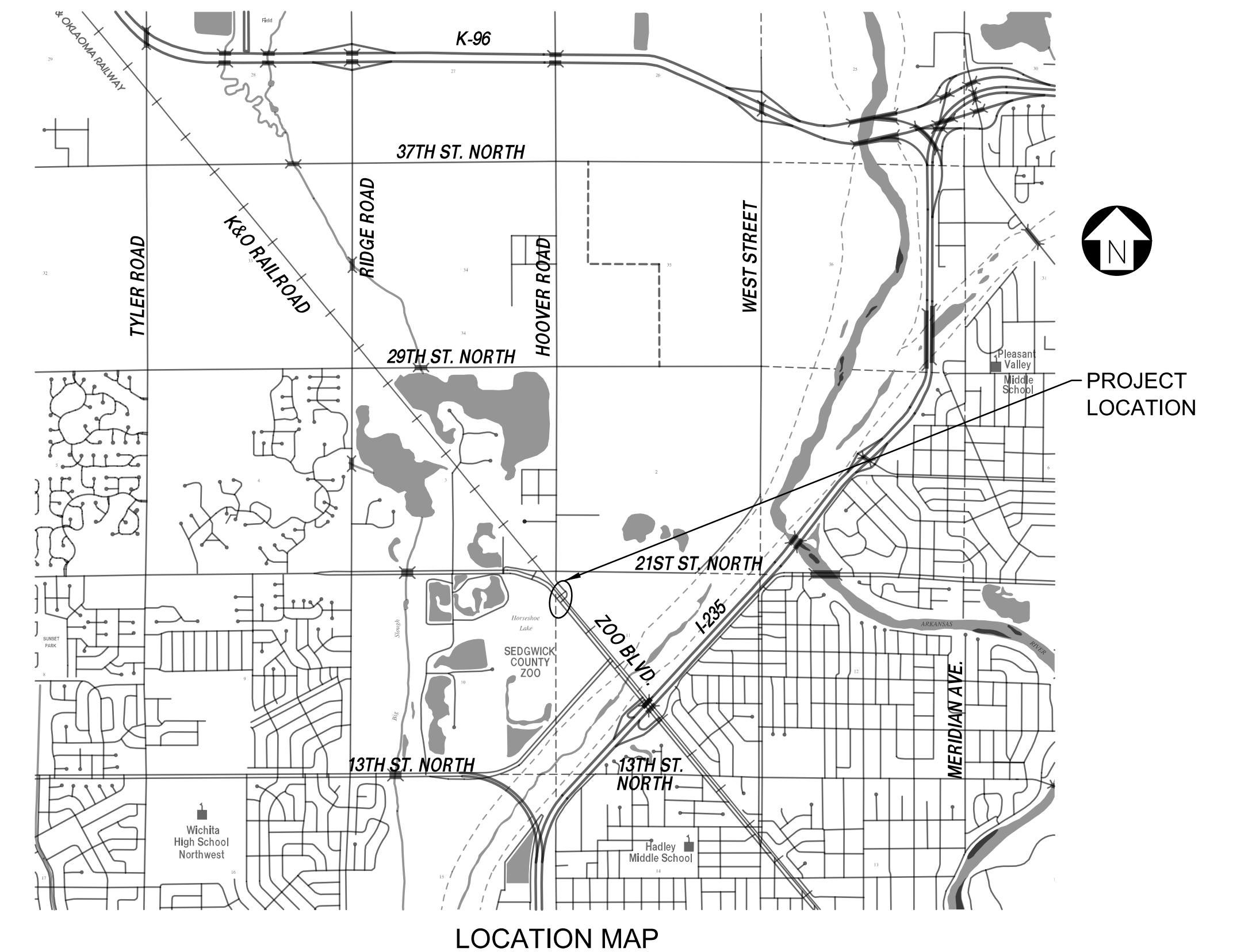
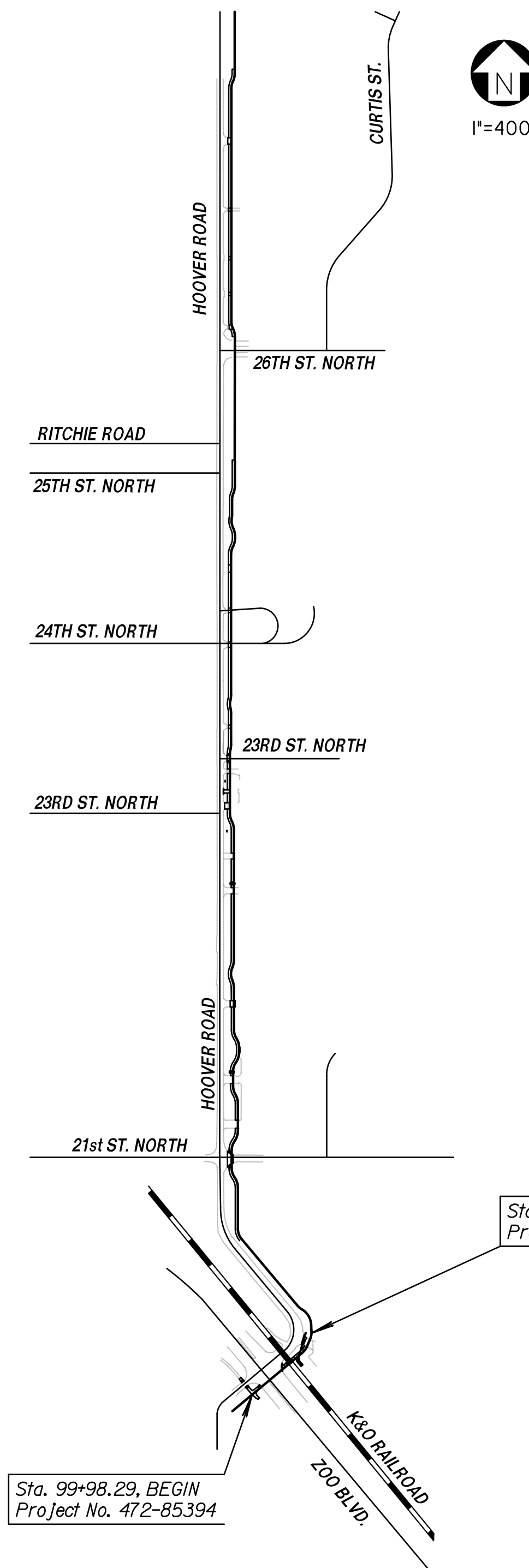


GROSS LENGTH OF PROJECT 332.93 FT.
EXCEPTIONS 0.00 FT.

NET LENGTH OF PROJECT 332.93 FT. 0.06 MILES
NET LENGTH OF BRIDGES 0.00 FT. 0.00 MILES
NET LENGTH OF ROAD 0.00 FT. 0.00 MILES

CONVENTIONAL SIGNS

COUNTY LINE	CENTER LINE OF PROJECT	-----
CITY LIMITS	TERRACE
STATE OR NATIONAL LINE	CULVERTS
TOWNSHIP, SECTION or GRANT LINE	DROP INLET & STORM SEWER
PROPERTY LINE	ACCESS CONTROL
HIGHWAY FENCE	POWER POLE
EXISTING FENCE	TELEPHONE POLE
GUARD FENCE	MARSH
CONSTRUCTION LIMITS	HEDGE
RIGHT OF WAY LINE	TREES
TRAVELED WAY	PROFILE ELEVATION
RAILROADS	STREAM or CREEK



Sta. 103+31.22, END
Project No. 472-85394

Sta. 99+98.29, BEGIN
Project No. 472-85394



PREPARED BY
TranSystems
245 N. WACO, SUITE 222
WICHITA, KANSAS 67202
MAIN: 316-303-3000
FAX: 316-462-5629