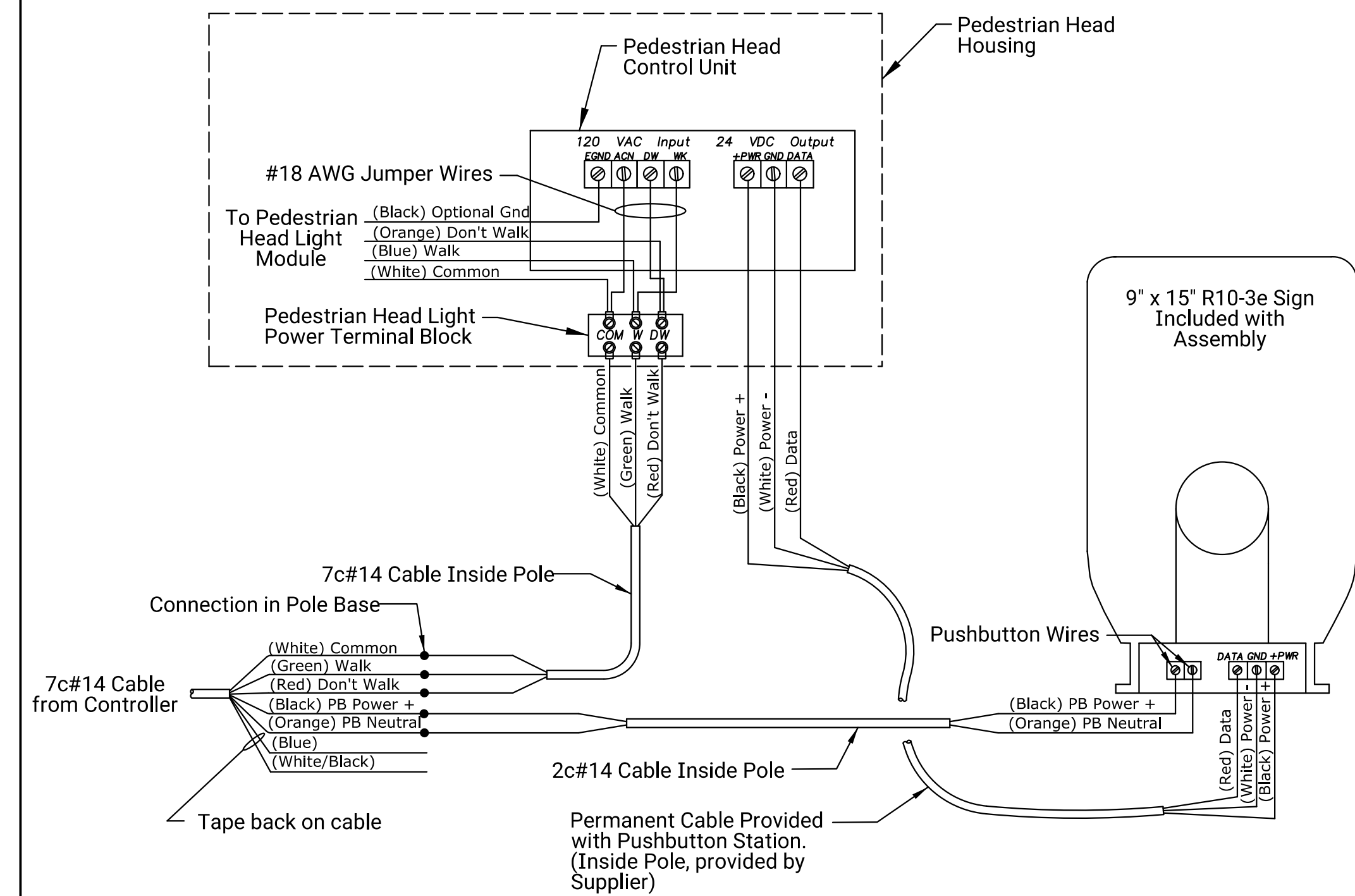
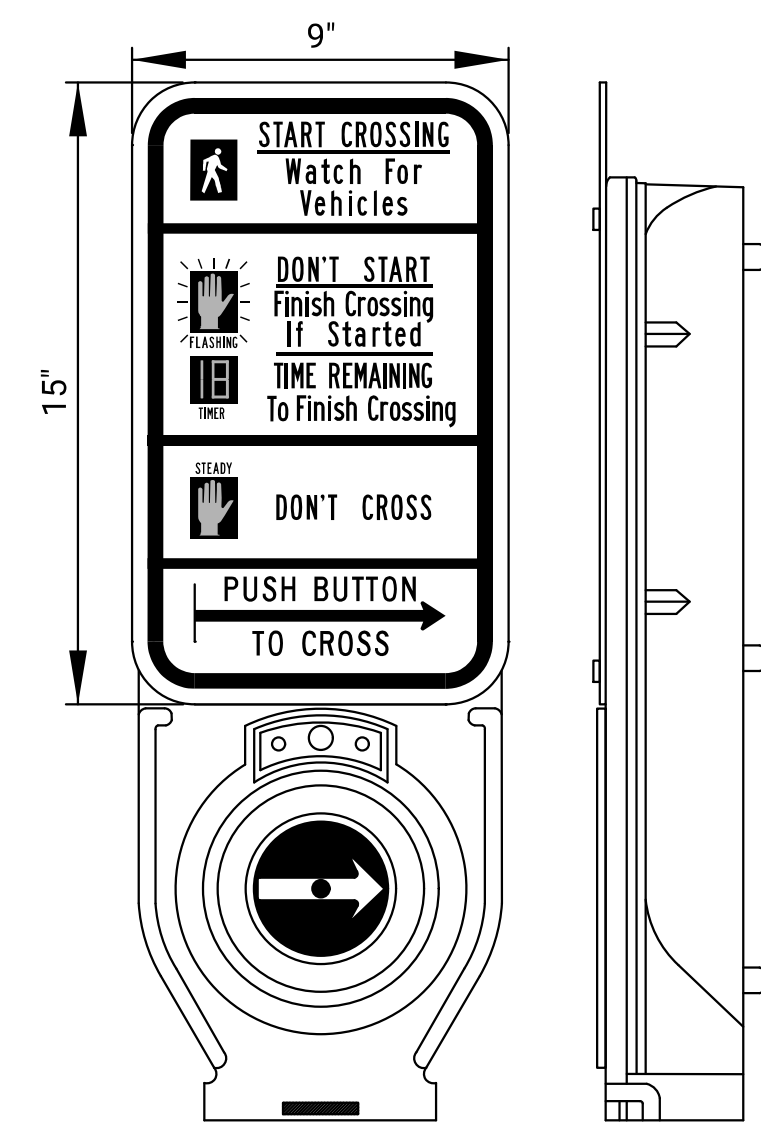


APS PUSHBUTTON STATION

1. PLUMB THE PUSHBUTTON STATION WITH LEVELING SHIMS AS REQUIRED.
2. THE PUSHBUTTON STATION FOUNDATION HAS TWO (2) OPTIONS. BOTH OPTIONS ARE SUBSIDIARY TO THE APS PUSHBUTTON STATION AND NO ADDITIONAL PAYMENT WILL BE MADE REGARDLESS OF FOUNDATION TYPE.
 - A. POURED MONOLITHIC WITH THE SIDEWALK - PROVIDE A 1:2 (V:H) SLOPE GRADE WHERE THE SIDEWALK DEPTH TRANSITIONS TO THE 12" FOUNDATION DEPTH.
 - B. ALTERNATIVE FOUNDATION DESIGN - PLACE FOUNDATION AS SHOWN. PROVIDE A BOND BREAKER OR EXPANSION JOINT TO SEPARATE FOUNDATION FROM SIDEWALK.
3. USE #6 BARE COPPER GROUND CONDUCTOR FROM CLAMP TO GROUND BOLT IN ACCESS HOLE.



PEDESTRIAN PUSHBUTTON WIRING DIAGRAM



APS PUSHBUTTON SYSTEM & SIGN (R10-3E, 9"x15")

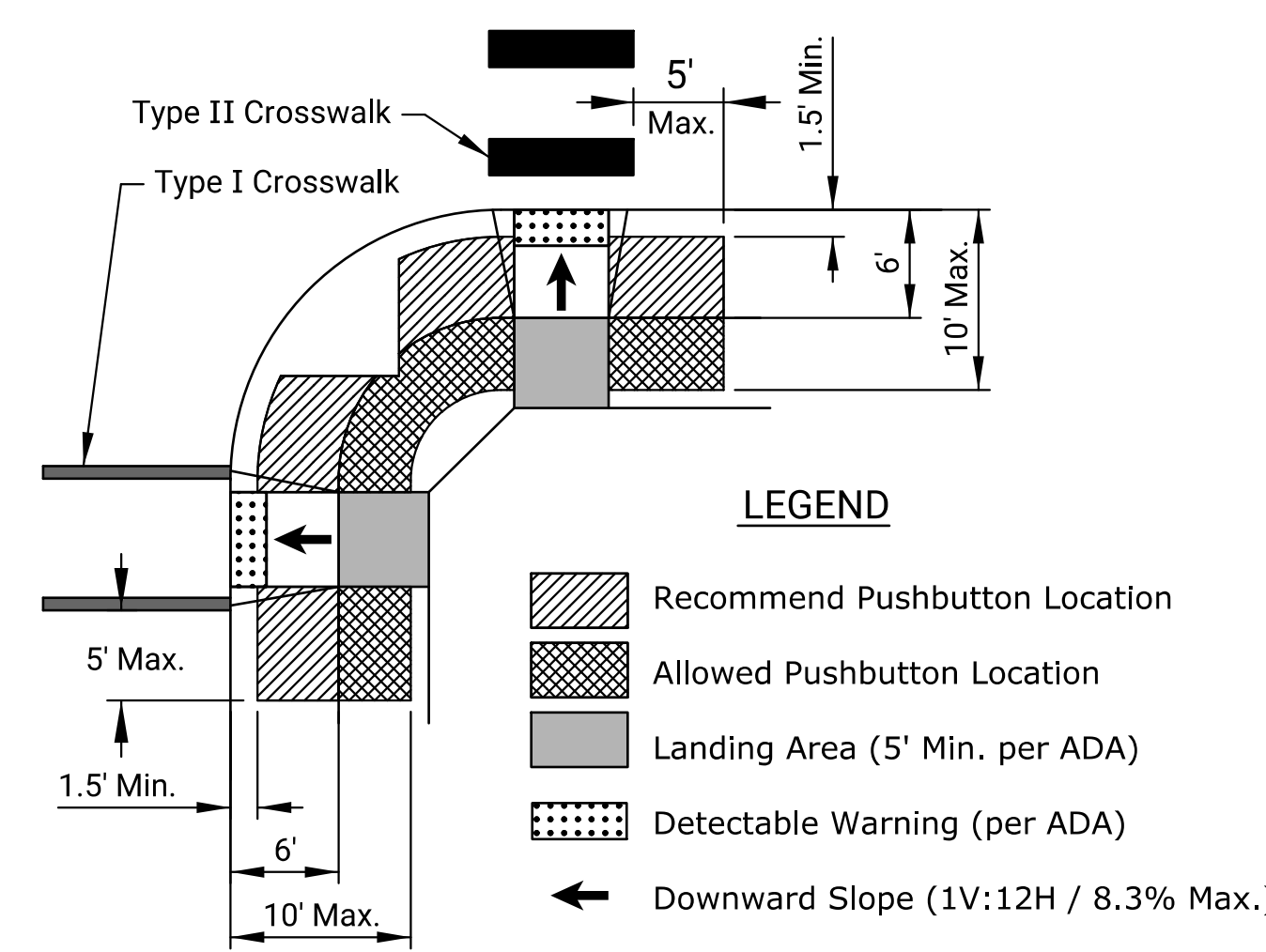
THE PUSH BUTTON STATION SHALL MEET OR EXCEED CURRENT MUTCD AND ADA REQUIREMENTS.

THE 4 WIRE NAVIGATOR PBS IS THE PEDESTRIAN INTERFACE TO THE NAVIGATOR ACCESSIBLE PEDESTRIAN SIGNAL. ALL SOUNDS EMANATE FROM THE BACK OF THE UNIT VIA A WEATHER-PROOF SPEAKER THAT IS PROTECTED BY A VANDAL RESISTANT SCREEN. A SUNLIGHT VISIBLE LED LATCHES "ON" TO CONFIRM THE BUTTON HAS BEEN PUSHED. EACH PBS CONNECTS TO A CONTROL UNIT LOCATED INSIDE ITS ASSOCIATED PED SIGN HOUSING. A FOUR WIRE CABLE CONNECTS THE PBS TO THE POWER UNIT.

PBS INCLUDES THE FRAME WITH OPTION R10-3e, ADA COMPLIANT PUSH BUTTON, AND MOUNTING HARDWARE.

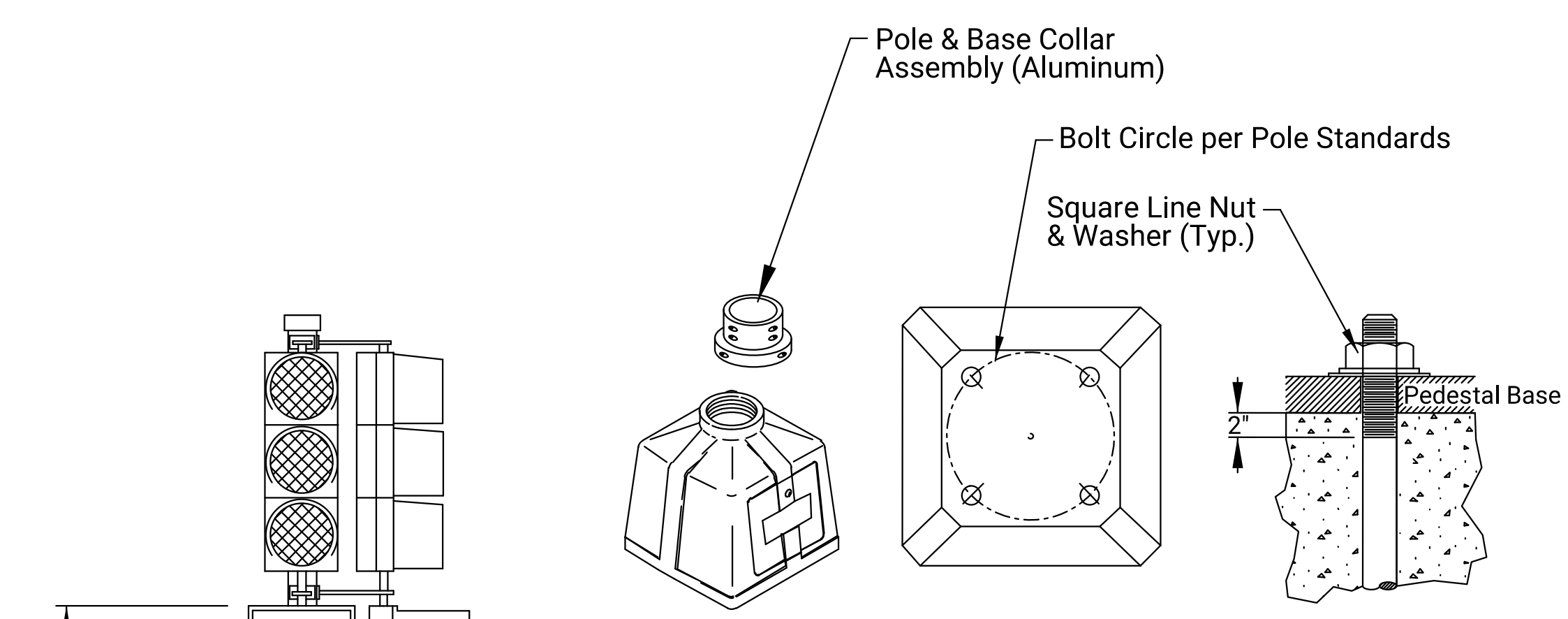
BY INTERFACING WITH THE CONTROL UNIT THAT INSTALLS IN THE PEDESTRIAN WALK SIGN, THE PBS SHALL PROVIDE THE FOLLOWING STANDARD FEATURES.

- * CONFORMATION OF THE BUTTON PUSH VIA LATCHING LED, SOUND, AND VIBROTACTILE BOUNCE.
- * DIRECTION OF TRAVEL (WITH EXTENDED BUTTON PUSH).
- * STANDARD LOCATING TONE DURING DON'T WALK (AND CLEARANCE IF DESIRED).
- * STANDARD VOICE MESSAGE DURING WALK.
- * VIBRATING BUTTON DURING WALK.
- * STANDARD VERBAL COUNTDOWN DURING PED CLEARANCE.
- * ALL SOUNDS AUTOMATICALLY ADJUST TO AMBIENT OVER 60DB RANGE.



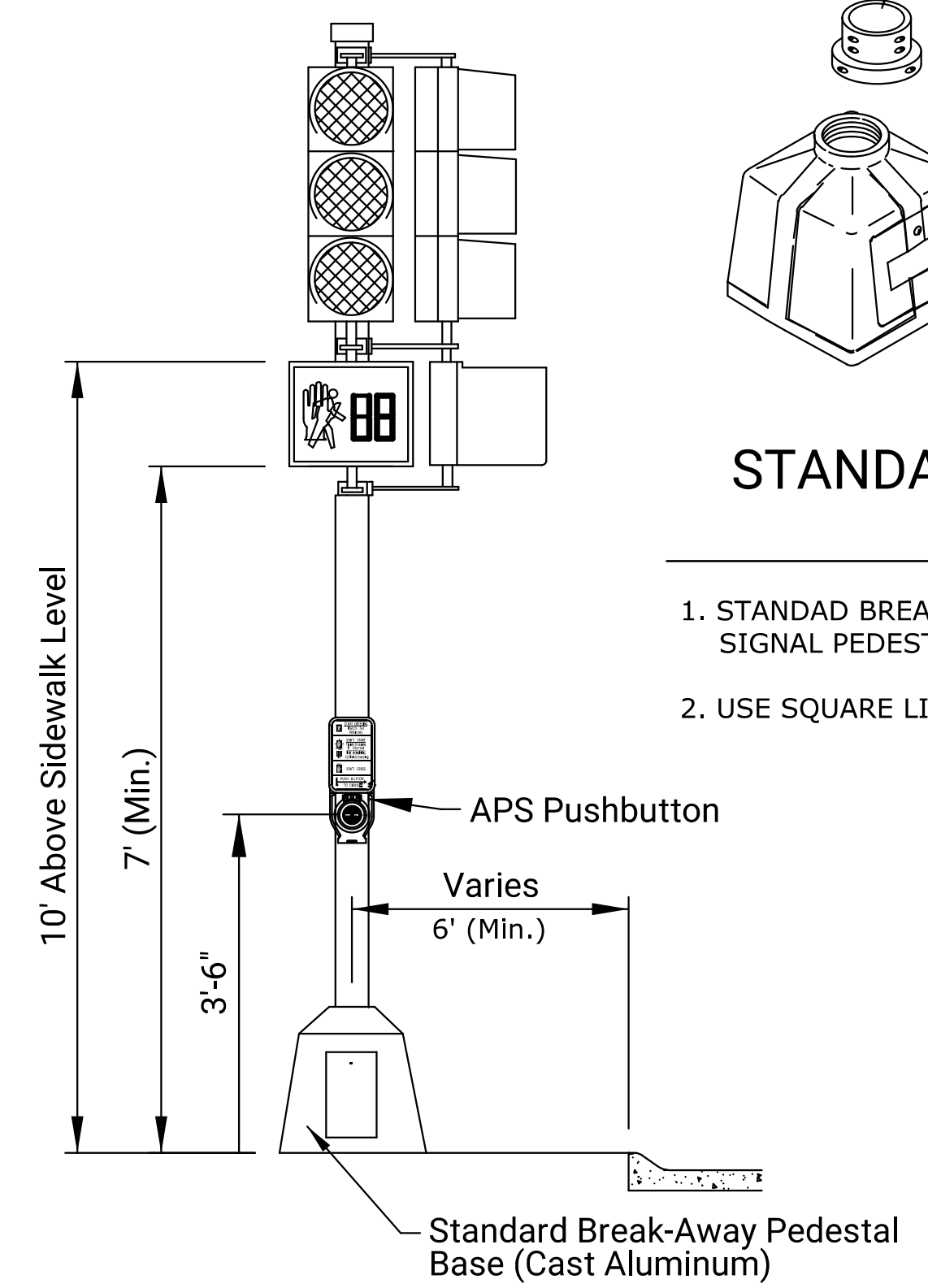
PUSHBUTTON LOCATION AREA

1. THIS FIGURE IS FOR REFERENCE ONLY AND PLACEMENT OF THE PUSHBUTTON STATION IS CRITICAL. CONSTRUCT & LOCATE PUSHBUTTONS IN ACCORDANCE WITH CURRENT MUTCD (CHAPTER 4E), ADA, AND PUBLIC RIGHTS OF WAY ACCESSIBILITY GUIDELINES (PROWAG) REQUIREMENTS.
2. MOUNT THE BUTTON SO TO A LEVEL ALL-WEATHER SURFACE THAT ITS IS CAPABLE OF EASY ACTIVATION AND CONVENIENTLY LOCATED NEAR THE EACH END OF THE CROSSWALK WITH THE FACE PARALLEL WITH THE ASSOCIATED CROSSWALK.
3. PUSHBUTTONS SHOULD BE SEPARATED BY A DISTANCE OF AT LEAST 10 FEET WITH A MOUNTING HEIGHT OF 3.5 FEET (42 INCHES), ABOVE THE SIDEWALK.
4. PUSHBUTTON LOCATION SHALL BE BETWEEN 1.5 FEET & 10 FEET FROM THE FACE OF CURB OR EDGE OF PAVEMENT, MEASURED IN THE DIRECTION OF TRAVEL. IT IS PREFERABLE THAT STANDALONE PUSHBUTTON STATIONS BE 4' MINIMUM FROM THE BACK OF CURB TO AVOID KNOCKDOWNS.
5. PROVIDE A 6 FOOT MINIMUM CLEAR DISTANCE WHEREVER POSSIBLE BETWEEN A PUSHBUTTON STATION & ANY VERTICAL OBSTRUCTIONS FOR MAINTENANCE & SNOW REMOVAL PURPOSES.



STANDARD BREAK-AWAY PEDESTAL BASE & ANCHOR BOLT DETAIL

1. STANDAD BREAK-AWAY PEDESTAL BASE SHALL BE USED ON BOTH THE TRAFFIC SIGNAL PEDESTAL AND APS PUSHBUTTON STATION.
2. USE SQUARE LINE NUTS AND WASHERS ON PEDESTAL BASE.



TRAFFIC SIGNAL PEDESTAL

CONSULTANTS:

HOOPER ROAD MULTI-USE PATH & TRAFFIC SIGNAL
 ZOO BLVD. TO 29TH STREET NORTH
 WICHITA, KANSAS
 CITY OF WICHITA

REVISIONS:	DESCRIPTION	MARK	DATE

PROJ NO: 472-85394
 SCALE: N/A
 DATE: 10/30/2020
 DESIGNED BY: MCG
 DRAWN BY: MCG
 CHECKED BY: CCB

SHEET TITLE:
SIGNAL PEDESTAL, PUSHBUTTON STATION, & APS PUSHBUTTON DETAILS

cbanka 10/30/2020 2:28:05 PM - c:\tran\systems\paw_local\tran\systems\paw\cbanka\407352111C-SIG-APS-R10.dgn

IF THIS DRAWING IS LESS THAN 22" X 36" IT IS A REDUCED SIZE DRAWING