

GENERAL NOTES

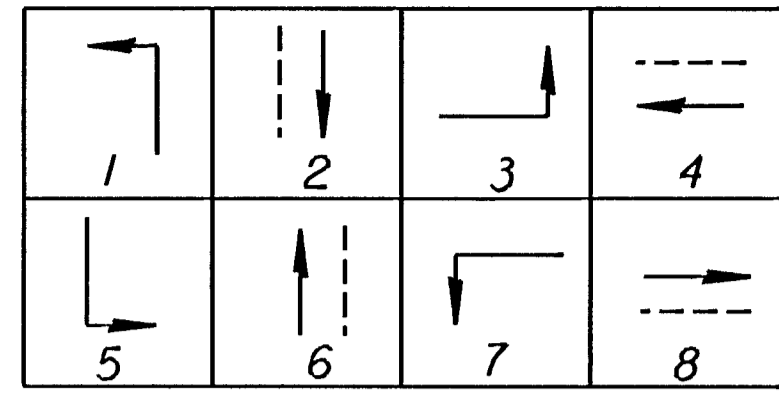
All Signal Heads shall have 12" lenses.

Placement of Signal Poles, Service/Junction Boxes, Conduit runs and Controller are typical and may be adjusted as directed by the Engineer to facilitate installation.

Utility locations are approximate. The Contractor shall be responsible for locating all underground utilities prior to construction.

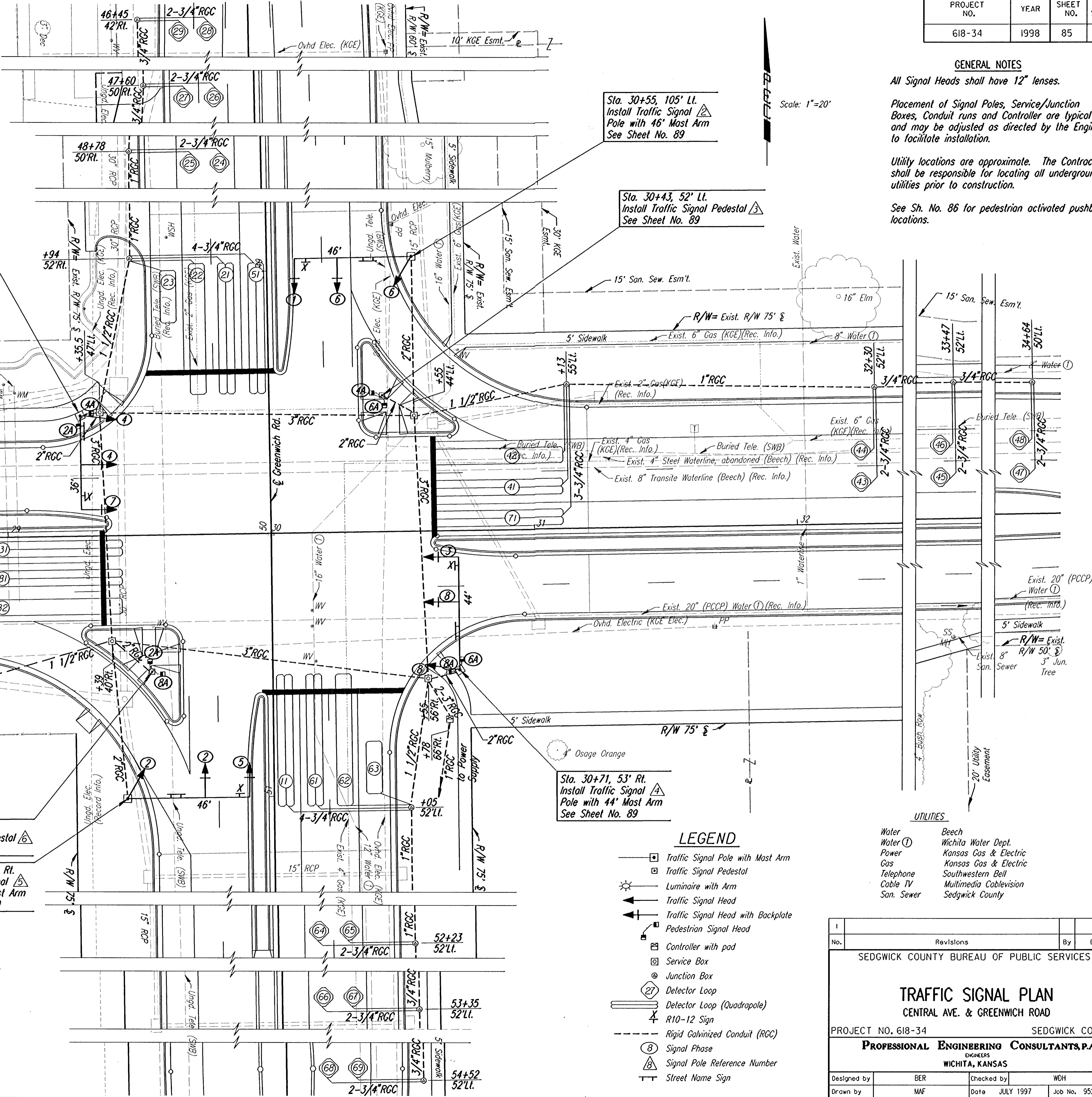
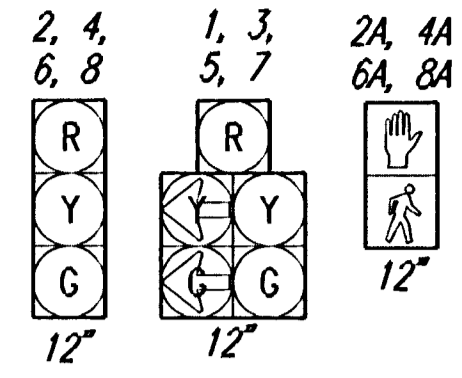
See Sh. No. 86 for pedestrian activated pushbutton locations.

Scale: 1"=20'



PHASE DIAGRAM

SIGNAL HEAD ARRANGEMENT



Sta. 29+28, 45.5' Lt.
Install Traffic Signal Pole (Joint Use) with 36' Mast Arm
See Sheet No. 89

Sta. 30+55, 105' Lt.
Install Traffic Signal Pole with 46' Mast Arm
See Sheet No. 89

Sta. 30+43, 52' Lt.
Install Traffic Signal Pedestal
See Sheet No. 89

Sta. 29+54, 52' Rt.
Install Traffic Signal Pedestal
See Sheet No. 89

Sta. 29+44, 100' Rt.
Install Traffic Signal Pole with 46' Mast Arm
See Sheet No. 89

Sta. 30+71, 53' Rt.
Install Traffic Signal Pole with 44' Mast Arm
See Sheet No. 89

	PHASE							
	1	2	3	4	5	6	7	8
MINIUM GREEN	4.0	5.0	4.0	5.0	4.0	5.0	4.0	5.0
PASSAGE TIME	1.0	1.0	1.0	1.0	1.0	1.0	1.0	1.0
MAXIMUM NO.1	30	80	30	80	30	80	30	80
MAXIMUM NO.2	30	80	30	80	30	80	30	80
YELLOW CHANGE	3.0	3.2	3.0	3.2	3.0	3.2	3.0	3.2
RED CLEARANCE	0.5	1.3	0.5	1.3	0.5	1.3	0.5	1.3
SECONDS/ACTUATION	2.0	2.0	2.0	2.0	2.0	2.0	2.0	2.0
MAXIMUM INITIAL	5.0	5.0	5.0	5.0	5.0	5.0	5.0	5.0
TIME BEFORE REDUCTION	—	20	—	20	—	20	—	20
CARS BEFORE REDUCTION	—	—	—	—	—	—	—	—
TIME TO REDUCE	—	—	—	—	—	—	—	—
MINIUM GAP	—	—	—	—	—	—	—	—
WALK	—	—	—	—	—	—	—	—
PEDESTRIAN CLEARANCE	—	—	—	—	—	—	—	—

Note:
The contractor shall stockpile the existing traffic signal, including all traffic signal heads, controller, poles, and signs, at the job site.
These items shall be removed by others. This work shall be Subsidiary to the Lump Sum Bid Item for Traffic Signals.

- LEGEND**
- ☐ Traffic Signal Pole with Mast Arm
 - ☐ Traffic Signal Pedestal
 - ☀ Luminaire with Arm
 - ☀ Traffic Signal Head
 - ☀ Traffic Signal Head with Backplate
 - ☐ Pedestrian Signal Head
 - ☐ Controller with pad
 - ☐ Service Box
 - ⊙ Junction Box
 - ⊙ Detector Loop
 - ⊙ Detector Loop (Quadrupole)
 - ⊙ R10-12 Sign
 - Rigid Galvanized Conduit (RCC)
 - ⊙ Signal Phase
 - ⊙ Signal Pole Reference Number
 - ⊙ Street Name Sign

- UTILITIES**
- Water
 - Water Ⓛ
 - Power
 - Gas
 - Telephone
 - Cable TV
 - San. Sewer
 - Beech
 - Wichita Water Dept.
 - Kansas Gas & Electric
 - Kansas Gas & Electric
 - Southwestern Bell
 - Multimedia Cablevision
 - Sedgwick County

SEDGWICK COUNTY BUREAU OF PUBLIC SERVICES			
TRAFFIC SIGNAL PLAN			
CENTRAL AVE. & GREENWICH ROAD			
PROJECT NO. 618-34		SEDGWICK COUNTY	
PROFESSIONAL ENGINEERING CONSULTANTS, P.A.			
ENGINEERS WICHITA, KANSAS			
Designed by	BER	Checked by	WDH
Drawn by	MAF	Date	JULY 1997
			Job No. 95297-2