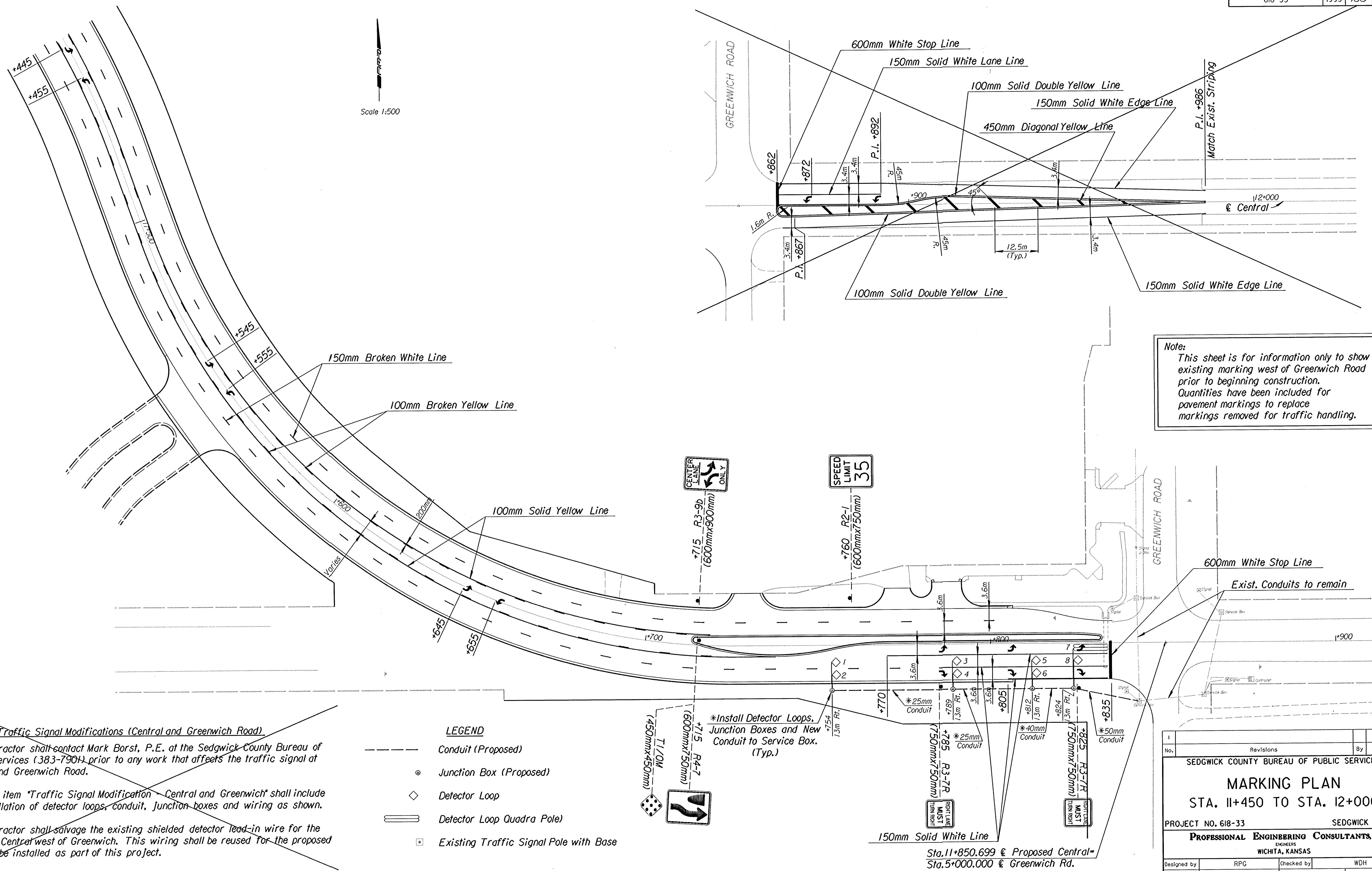


DATE	
BY	
REFERENCES NOTED	
REFERENCES CHECKED	



Note:
 This sheet is for information only to show existing marking west of Greenwich Road prior to beginning construction. Quantities have been included for pavement markings to replace markings removed for traffic handling.

Traffic Signal Modifications (Central and Greenwich Road)
 The Contractor shall contact Mark Borst, P.E. at the Sedgwick County Bureau of Public Services (383-7901) prior to any work that affects the traffic signal at Central and Greenwich Road.
 *This bid item "Traffic Signal Modification - Central and Greenwich" shall include the installation of detector loops, conduit, junction boxes and wiring as shown.
 The Contractor shall salvage the existing shielded detector lead-in wire for the loops on Central west of Greenwich. This wiring shall be reused for the proposed loops to be installed as part of this project.

- LEGEND**
- Conduit (Proposed)
 - Junction Box (Proposed)
 - ◇ Detector Loop
 - ▬ Detector Loop Quadra Pole
 - ▣ Existing Traffic Signal Pole with Base

*Install Detector Loops, Junction Boxes and New Conduit to Service Box. (Typ.)

Revisions		By	Date
No.			
SEDGWICK COUNTY BUREAU OF PUBLIC SERVICES MARKING PLAN STA. 11+450 TO STA. 12+000 PROJECT NO. 618-33 SEDGWICK COUNTY PROFESSIONAL ENGINEERING CONSULTANTS, P.A. <small>ENGINEERS</small> WICHITA, KANSAS			
Designed by	RPC	Checked by	WDH
Drawn by	GDR	Date	Sept. 1995
		Job No.	93563

i:/1995/95297/markimg/mrkexist.dgn
 Drawn By: GDR
 Plotted by: maf 7-25-97