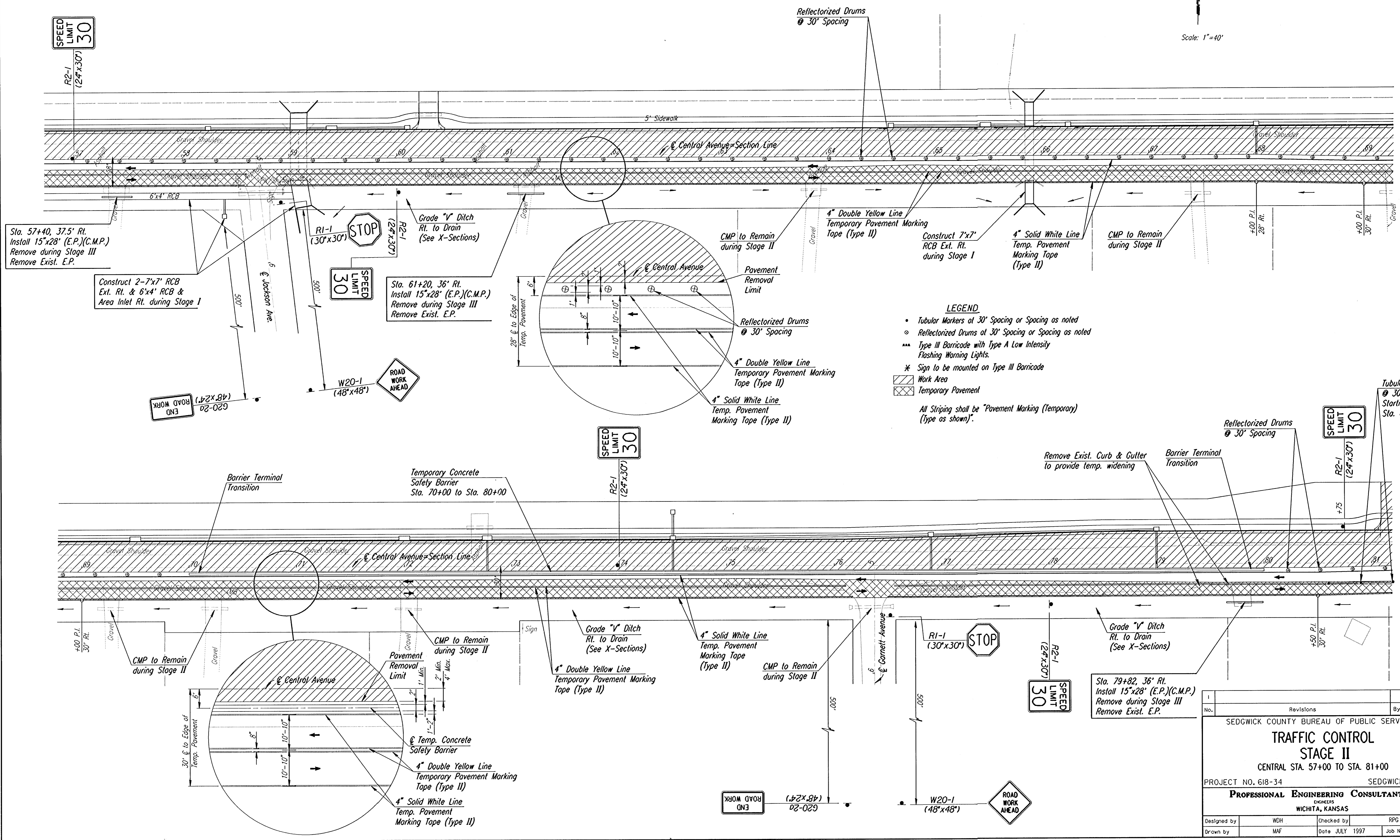


Scale: 1"=40'



**LEGEND**

- Tubular Markers at 30' Spacing or Spacing as noted
- ⊙ Reflectorized Drums at 30' Spacing or Spacing as noted
- \*\*\* Type III Barricade with Type A Low Intensity Flashing Warning Lights.
- \* Sign to be mounted on Type III Barricade
- ▨ Work Area
- ▤ Temporary Pavement

All Striping shall be "Pavement Marking (Temporary) (Type as shown)".

Sta. 57+40, 37.5' Rt.  
Install 15"x28" (E.P.)(C.M.P.)  
Remove during Stage III  
Remove Exist. E.P.

Construct 2-7x7' RCB  
Ext. Rt. & 6'x4' RCB &  
Area Inlet Rt. during Stage I

Sta. 61+20, 36' Rt.  
Install 15"x28" (E.P.)(C.M.P.)  
Remove during Stage III  
Remove Exist. E.P.

Sta. 79+82, 36' Rt.  
Install 15"x28" (E.P.)(C.M.P.)  
Remove during Stage III  
Remove Exist. E.P.

i:/1995/95297/002/1rcontr/1rcontrst2cdgn  
 Drawn by: maf  
 Plotted by: maf 7-29-97

| No. | Revisions | By | Date |
|-----|-----------|----|------|
|     |           |    |      |

**SEDGWICK COUNTY BUREAU OF PUBLIC SERVICES**  
**TRAFFIC CONTROL**  
**STAGE II**  
 CENTRAL STA. 57+00 TO STA. 81+00  
 PROJECT NO. 618-34 SEDGWICK COUNTY  
**PROFESSIONAL ENGINEERING CONSULTANTS, P.A.**  
 WICHITA, KANSAS

|             |     |            |           |
|-------------|-----|------------|-----------|
| Designed by | WDH | Checked by | RPG       |
| Drawn by    | MAF | Date       | JULY 1997 |
|             |     | Job No.    | 95297-2   |