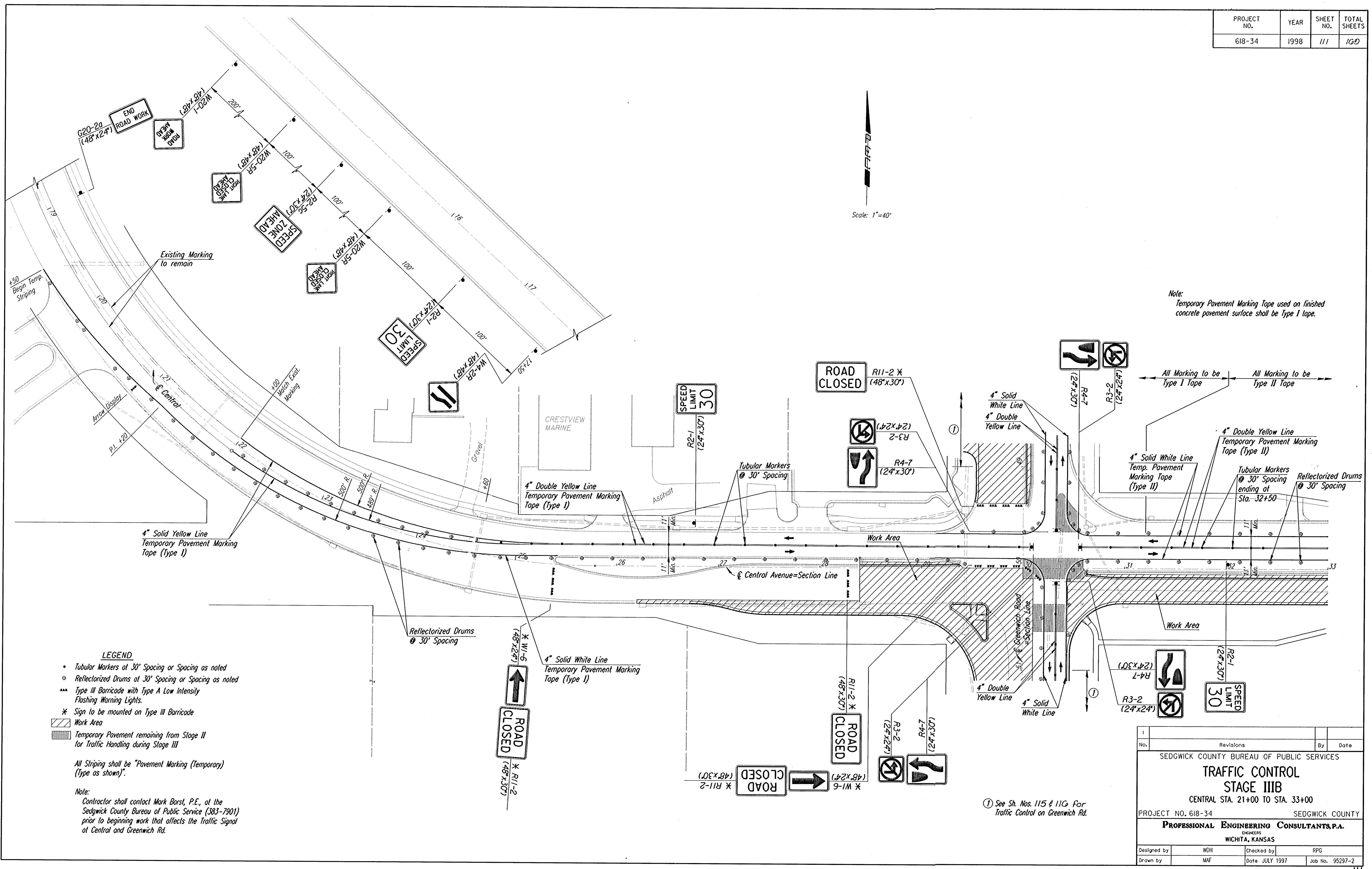


PROJECT NO.	YEAR	SHEET NO.	TOTAL SHEETS
618-34	1998	111	100



Note:
Temporary Pavement Marking Tape used on finished concrete pavement surface shall be Type I tape.

- LEGEND**
- Tubular Markers at 30' Spacing or Spacing as noted
 - Reflectorized Drums at 30' Spacing or Spacing as noted
 - Type III Barricade with Type A Low Intensity Flashing Warning Lights.
 - * Sign to be mounted on Type III Barricade
 - Work Area
 - Temporary Pavement remaining from Stage II for Traffic Handling during Stage III

All Striping shall be "Pavement Marking (Temporary) (Type as shown)".

Note:
Contractor shall contact Mark Borst, P.E., at the Sedgwick County Bureau of Public Service (383-7901) prior to beginning work that affects the Traffic Signal at Central and Greenwich Rd.

i:\1995\95297\002\trcont\1\trcont\sl3a.dgn
 Drawn by: maf
 Plotted by: maf 7-25-97

No.		Revisions		By	Date
SEDGWICK COUNTY BUREAU OF PUBLIC SERVICES TRAFFIC CONTROL STAGE IIIB CENTRAL STA. 21+00 TO STA. 33+00 PROJECT NO. 618-34 SEDGWICK COUNTY PROFESSIONAL ENGINEERING CONSULTANTS, P.A. ENGINEERS WICHITA, KANSAS					
Designed by	WDH	Checked by	RPG		
Drawn by	MAF	Date	JULY 1997	Job No.	95297-2

① See Sh. Nos. 115 & 116 For Traffic Control on Greenwich Rd.