

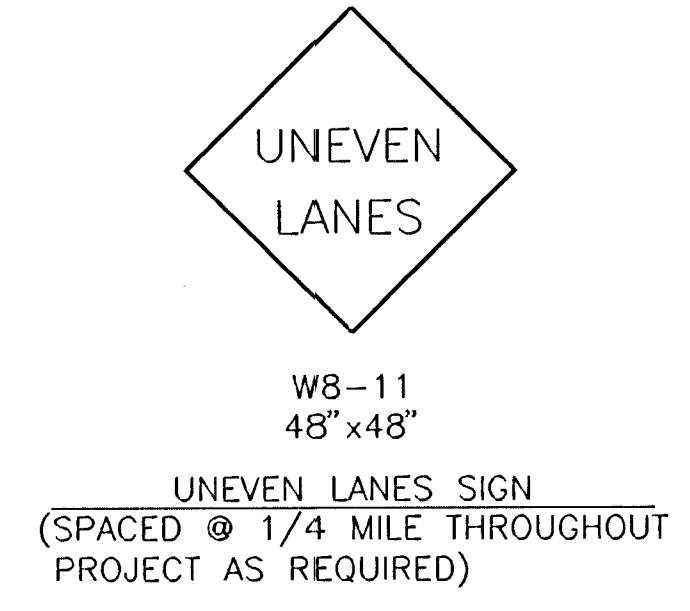
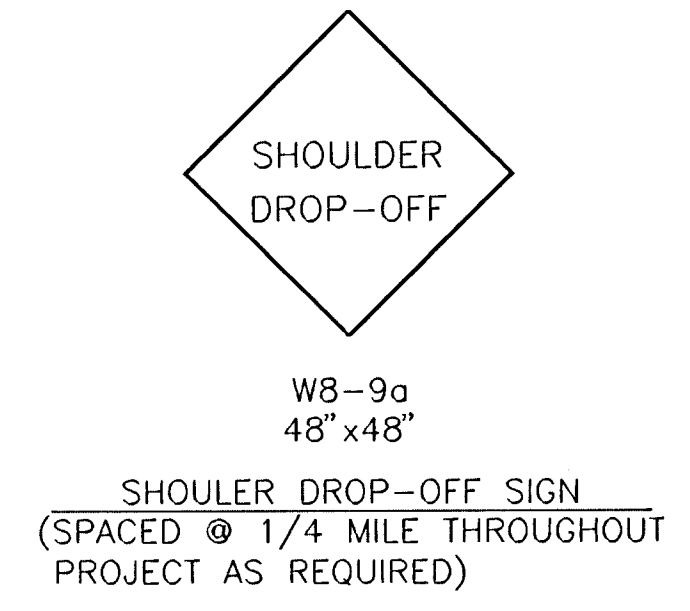
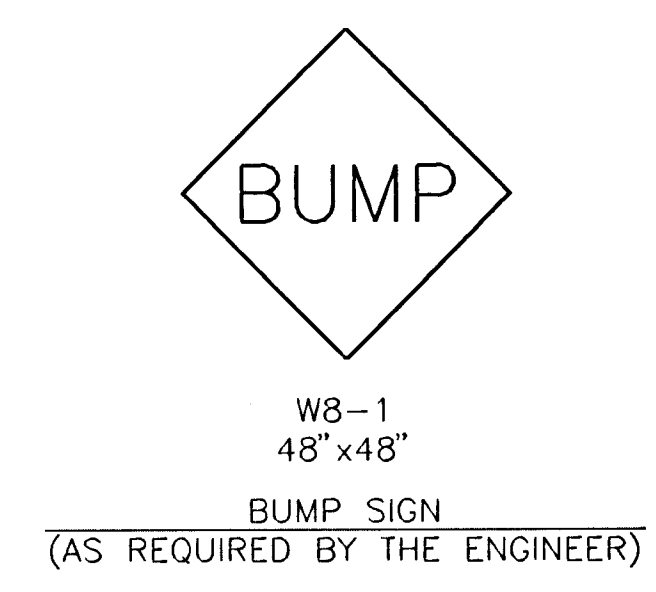
LIST OF TRAFFIC CONTROL DEVICES *

MUTCD DEVICE NO.	NO.	FLASHERS		REMARKS
		TYPE A	TYPE B	
W20-1	2			
R2-5c	2			
W20-4	2			
R4-1	2			
R2-1	2			
W20-7a	2			
G20-2A	2			
W8-9a				
W8-11				
W8-1				

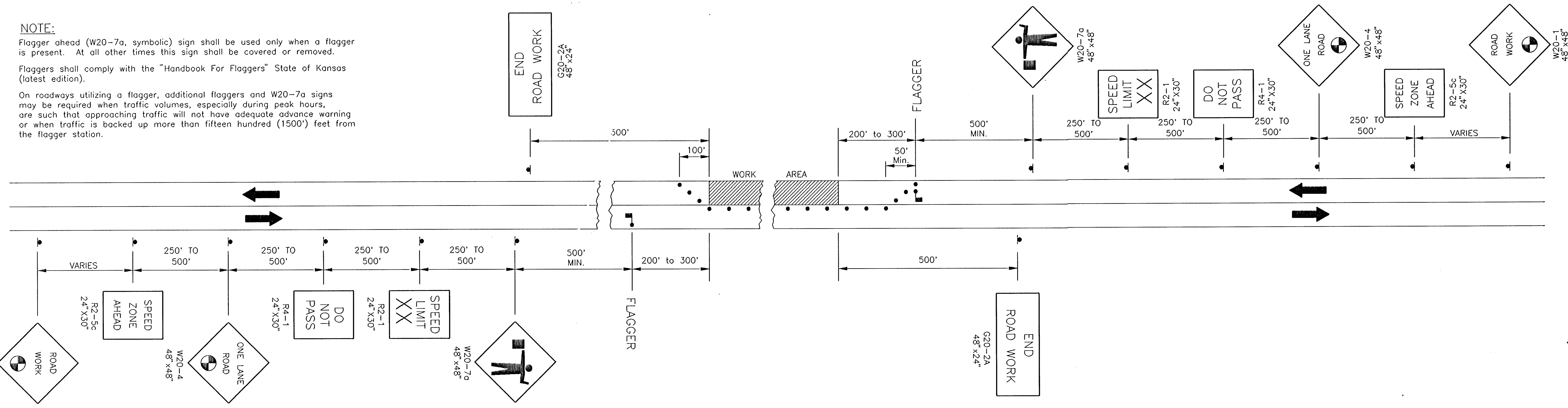
DELINEATORS & CHANNELIZATION DEVICES					
DEVICE	NO.	SIZE	FLASHERS		
			TYPE A	TYPE B	TYPE C
BARRICADES					
TYPE III					
TYPE II					
TYPE I					
DRUMS					
CONES					
TUBES					
VERTICAL PANELS					
SINGLE					
BACK TO BACK					
PAVEMENT MARKING	WHITE	YELLOW			
4" BROKEN (Lin. Ft.)					
4" SOLID (Lin. Ft.)					
TEMPORARY STRIPING (Line Mile)					

* FOR INFORMATION ONLY

SEE SHEET NO. 102 FOR TRAFFIC CONTROL NOTES



NOTE:
 Flagger ahead (W20-7a, symbolic) sign shall be used only when a flagger is present. At all other times this sign shall be covered or removed.
 Flaggers shall comply with the "Handbook For Flaggers" State of Kansas (latest edition).
 On roadways utilizing a flagger, additional flaggers and W20-7a signs may be required when traffic volumes, especially during peak hours, are such that approaching traffic will not have adequate advance warning or when traffic is backed up more than fifteen hundred (1500') feet from the flagger station.



- XX Speed To Be Determined By The ENGINEER.
- Distance To Be Determined By The ENGINEER.
- Channelization devices.

TRAFFIC CONTROL PLAN FOR HANDLING ONE-LANE TRAFFIC THROUGH WORK AREA (FLAGGER)

TRAFFIC CONTROL PLAN FOR ONE LANE CLOSED ON A TWO-LANE ROADWAY (FLAGGER) T.C. NO. 3.0

PREPARED BY SEDGWICK COUNTY BUREAU OF PUBLIC SERVICES HIGHWAY DIVISION					
DAVID C. SPEARS, P.E.			DIRECTOR/COUNTY ENGINEER		
REVISED	SCALE	DESIGNED	TRACED	CHECKED	SHEET NO.
DATE					
PLANFILE TC-3-0			TOTAL SHEETS		

12/95	CHG G20-2 to G20-2A 60"x24"	DRS/
12/94	CHG W8-9a, W20-1, G20-2 & ADD W8-11	DRS/