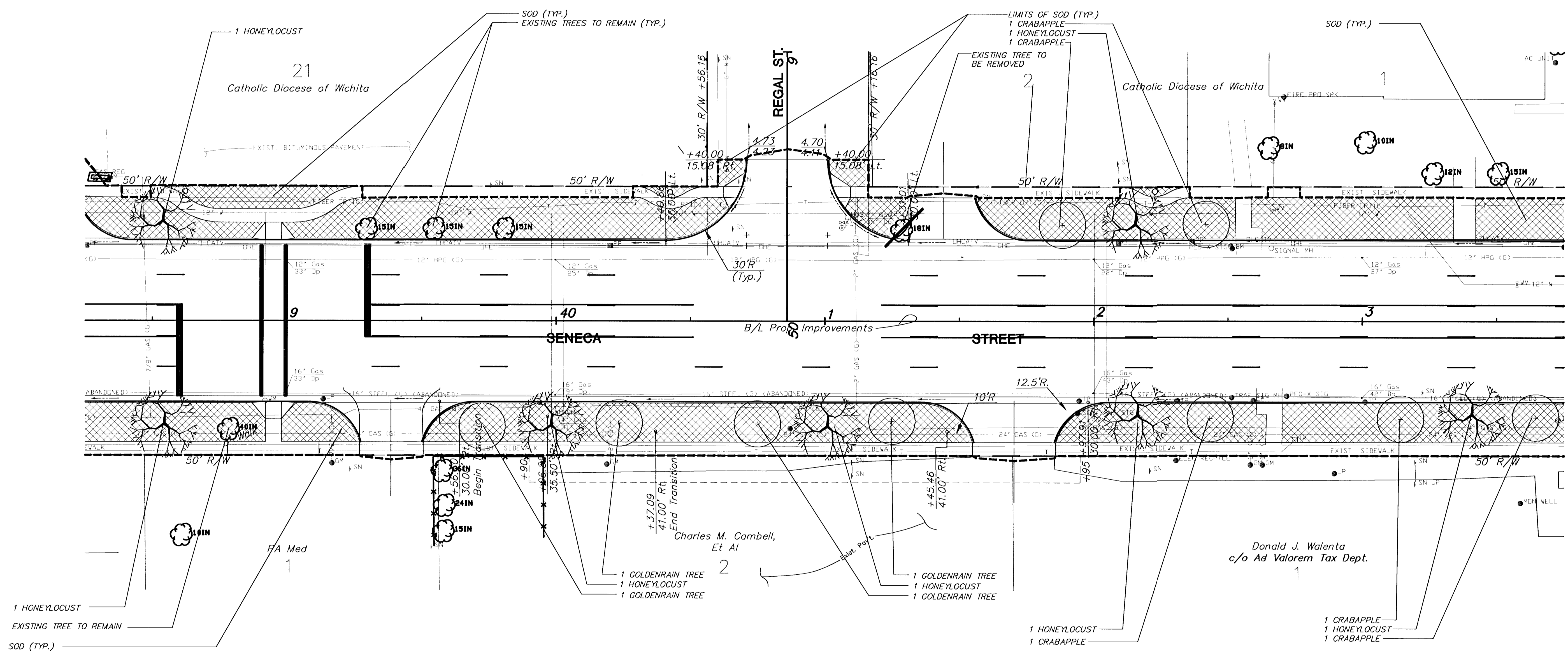


Scale: 1" = 20'



PER-SHEET LANDSCAPE BID QUANTITIES

QTY.	BOTANICAL NAME	COMMON NAME	SIZE	ROOT
7	GLEDITSIA TRIACANTHOS VAR. INERMIS CV. IMPERIAL	IMPERIAL HONEYLOCUST	2"-2 1/2" CAL.	B&B
3	KOELREUTERIA PANICULATA	GOLDENRAIN TREE	2"-2 1/2" CAL.	B&B
5	MALUS CV. SNOW DRIFT	SNOW DRIFT CRABAPPLE	2"-2 1/2" CAL.	B&B

UTILITY OWNERS

- G - Kansas Gas Service (316)832-3169
- W - City of Wichita Water & Sewer Department (316)268-4908
- T - Southwestern Bell Telephone Co. (800)734-7590
- E - Kansas Gas and Electric (316)832-3180
- CATV - Cox Communications (316)262-4270
- SS - City of Wichita Water & Sewer Department (316)268-4908
- SWS - City of Wichita Water & Sewer Department (316)268-4908

KANSAS DEPARTMENT OF TRANSPORTATION

**SOUTH SENECA STREET
38+50 TO 43+50
LANDSCAPE PLANTING**

PROJECT NO. 472-83084 SEDGWICK CO.

MID-KANSAS ENGINEERING CONSULTANTS, INC.
WICHITA, KANSAS

DESIGNED BY: LME	CHECKED BY: GJA
DRAWN BY:	DATE: MAY 1, 2000 SHEET 5 OF 8

H:\CIVIL\SENECA\94005-2\LANDSCAPE\94005L48.DWG P1 Apr 28 11:54:13 2000

94005L4