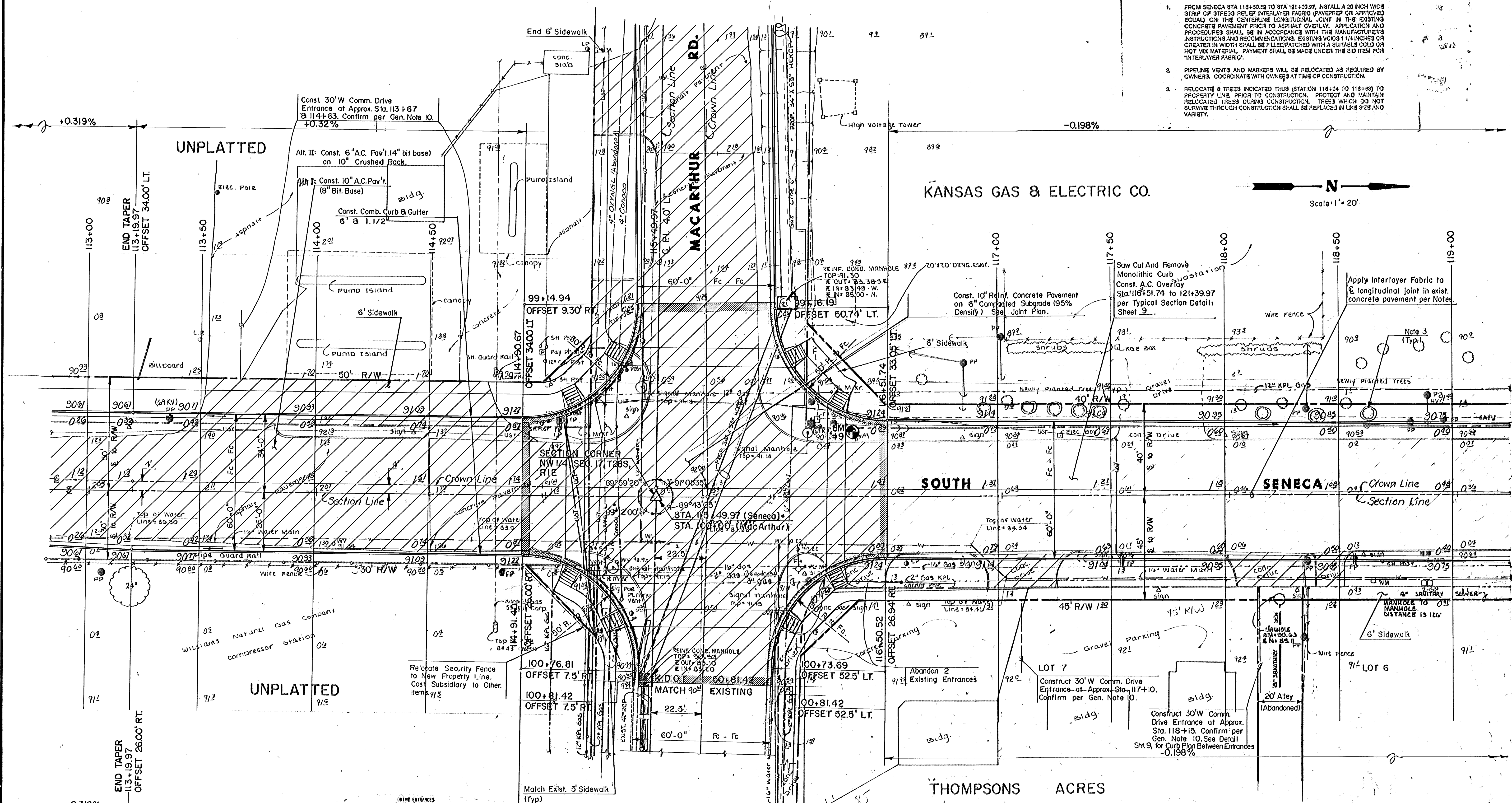


**NOTES:**

- FROM SENECA STA 118+50.52 TO STA 121+39.97, INSTALL A 20 INCH WIDE STRIP OF STRESS RELIEF INTERLAYER FABRIC (APPROVED EQUAL) ON THE CENTERLINE LONGITUDINAL JOINT IN THE EXISTING CONCRETE PAVEMENT PRIOR TO ASPHALT OVERLAY. APPLICATION AND PROCEDURES SHALL BE IN ACCORDANCE WITH THE MANUFACTURER'S INSTRUCTIONS AND RECOMMENDATIONS. EXISTING VCI'S 11 INCHES OR GREATER IN WIDTH SHALL BE FLEDPATCHED WITH A SUITABLE COLD OR HOT MIX MATERIAL. PAYMENT SHALL BE MADE UNDER THE BID ITEM FOR "INTERLAYER FABRIC".
- PIPELINE VENTS AND MARKERS WILL BE RELOCATED AS REQUIRED BY OWNERS. COORDINATE WITH OWNERS AT TIME OF CONSTRUCTION.
- RELOCATE 9 TREES INDICATED THIS (STATION 118+54 TO 118+83) TO PROPERTY LINE PRIOR TO CONSTRUCTION. PROTECT AND MAINTAIN RELOCATED TREES DURING CONSTRUCTION. TREES WHICH DO NOT SURVIVE THROUGH CONSTRUCTION SHALL BE REPLACED IN LIKE SIZE AND VARIETY.



- Ref: Sec. Cor. Sta. 115+49.97 (Seneca)
1. Thimble with 1" iron pipe
  2. 81.00' N.W. to Nail in Bottle Cap in L.P.
  3. 70.15' N.N.W. to "+" cut on S.E. Cor. of MH.
  4. 72.71' N.E. to "+" cut on S. side of MH
  5. 34.38' S.E. to "+" cut on N.W. Cor. of MH

CL LOCATION	TYPE	W	CL WID	NOTES
117+108	Full Radius	30	91.30	Commercial
117+75L	Full Radius	30	91.13	No Sidewalk
118+158	Full Radius	30	91.24	Commercial
118+45R	Full Radius	12	91.02	Commercial
119+25L	Full Radius	12	90.98	Residential
119+50R	Full Radius	12	91.00	Residential
119+74L	Full Radius	25	91.00	Commercial
120+22R	Full Radius	12	90.84	Residential
120+56R	Full Radius	15	90.83	Residential

**INTERSECTION QUANTITIES**  
 1951.6 SY. 10" REINF CONCRETE PAVEMENT  
 333.3 LF. COMBINED CURB & GUTTER  
 2050.8 SY. SUBGRADE STABILIZATION MANIPULATION

**SOUTH SENECA IMPROVEMENTS**

**PAVING PLAN**

48TH ST. SO. TO MACARTHUR RD.

---

MID-KANSAS ENGINEERING CONSULTANTS PA  
 3500 NORTH ROCK ROAD  
 BUILDING #800  
 WICHITA, KANSAS 67225

638-5566