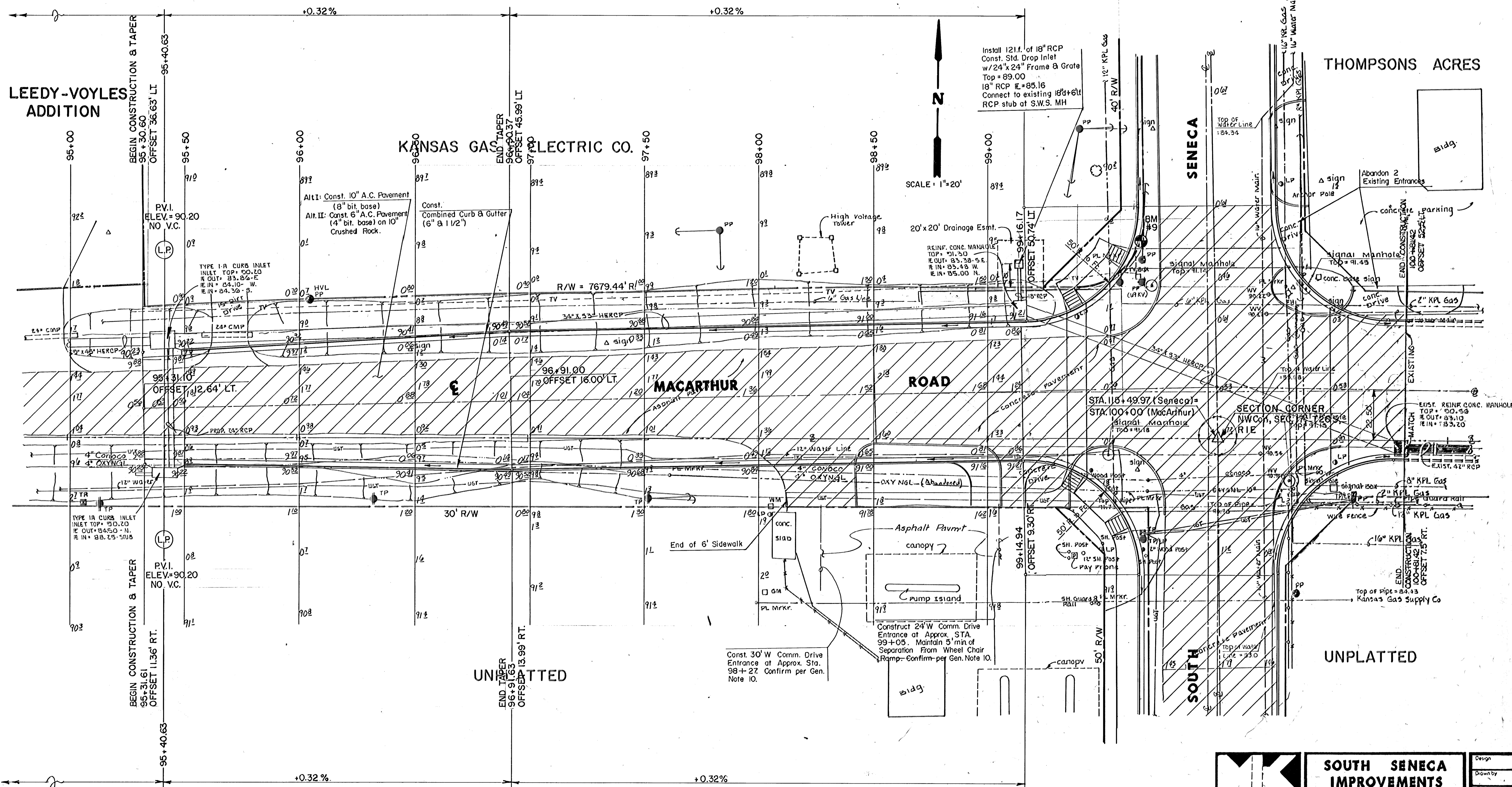


LEEDY-VOYLES
ADDITION

KANSAS GAS ELECTRIC CO.

THOMPSONS ACRES



Install 121.6' of 18" RCP
Const. Std. Drop Inlet
w/24"x24" Frame & Grate
Top = 89.00
18" RCP E = 85.16
Connect to existing 18"x6" RCP stub at S.W.S. MH

SCALE: 1"=20'



**SOUTH SENECA
IMPROVEMENTS**

PAVING PLAN

48TH ST. SO. TO MACARTHUR RD.

MID-KANSAS ENGINEERING CONSULTANTS PA
3500 NORTH ROCK ROAD
BUILDING #800
WICHITA, KANSAS 67226

Design
Drawn by
Checked by
Date
Job no.

Sheet **11**
of **41**

89-33-1132
Seneca - MacArthur - West
1/4