

PHASE 1A-GRASS & LANDSCAPE PLANTING

PAVING PLANS FOR

SOUTH SENECA

INDEX TO DRAWINGS

GENERAL NOTES

1. INFORMATION SHOWN ON PLANS NOT DIRECTLY RELATED TO THE TREE PLANTINGS IS NOT A PART OF THIS CONTRACT AND SHALL BE CONSIDERED AS DELETED.
2. ALL AREAS DISTURBED BY THE CONTRACTOR SHALL BE RESTORED TO A CONDITION ACCEPTABLE TO THE ENGINEER. THIS WORK SHALL BE SUBSIDIARY TO OTHER BID ITEMS.
3. EXACT LOCATION FOR TREE PLANTINGS TO BE DETERMINED BY THE ENGINEER.
4. LANDSCAPE CONTRACTOR IS TO VERIFY THE LOCATION OF ALL UNDERGROUND UTILITIES PRIOR TO INSTALLATION OF PLANT MATERIAL (INCLUDING SANITARY SEWERS). UTILITIES CAN BE FLAGGED BY CALLING 687-2470.

From N.L. of 48th St. So. to 400' N of N.Line of MacArthur Rd.
41st &

47th. St. So. from 400'W. to 590'E. of $\frac{1}{2}$ Seneca &

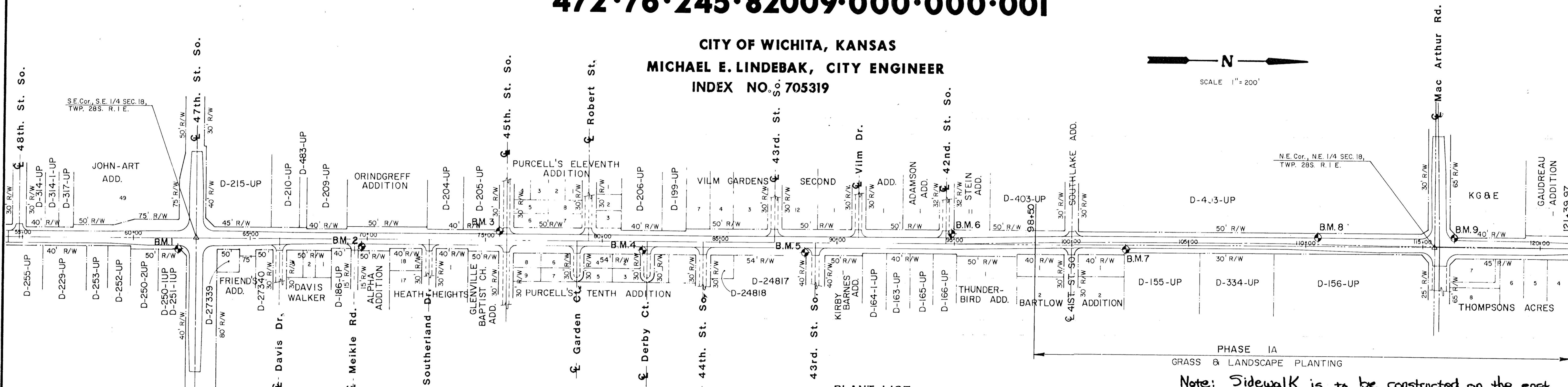
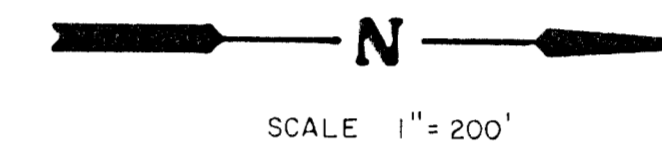
MacArthur Rd. from 400'W. to Seneca

Sheet No.	Description
1	Title Sheet
2-8	Landscape Plans

Revised 3-10-93

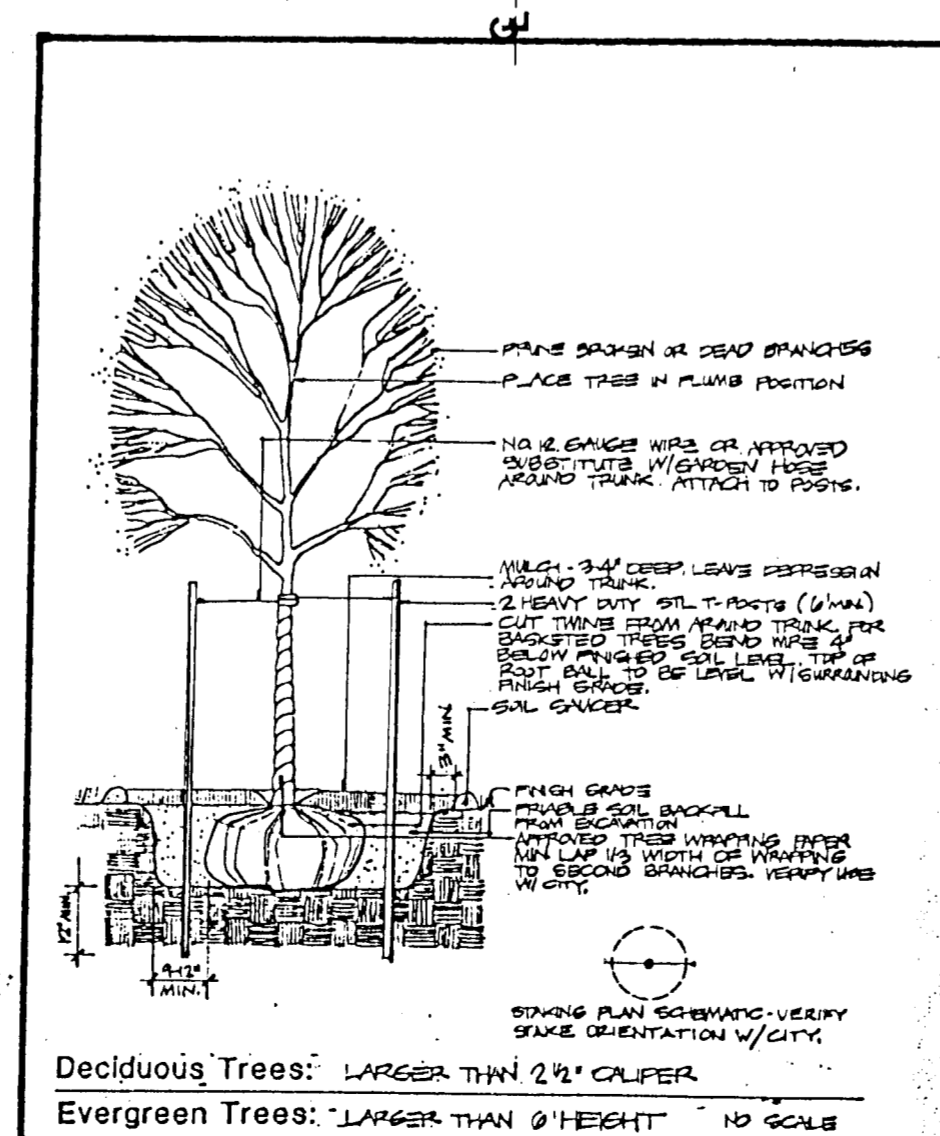
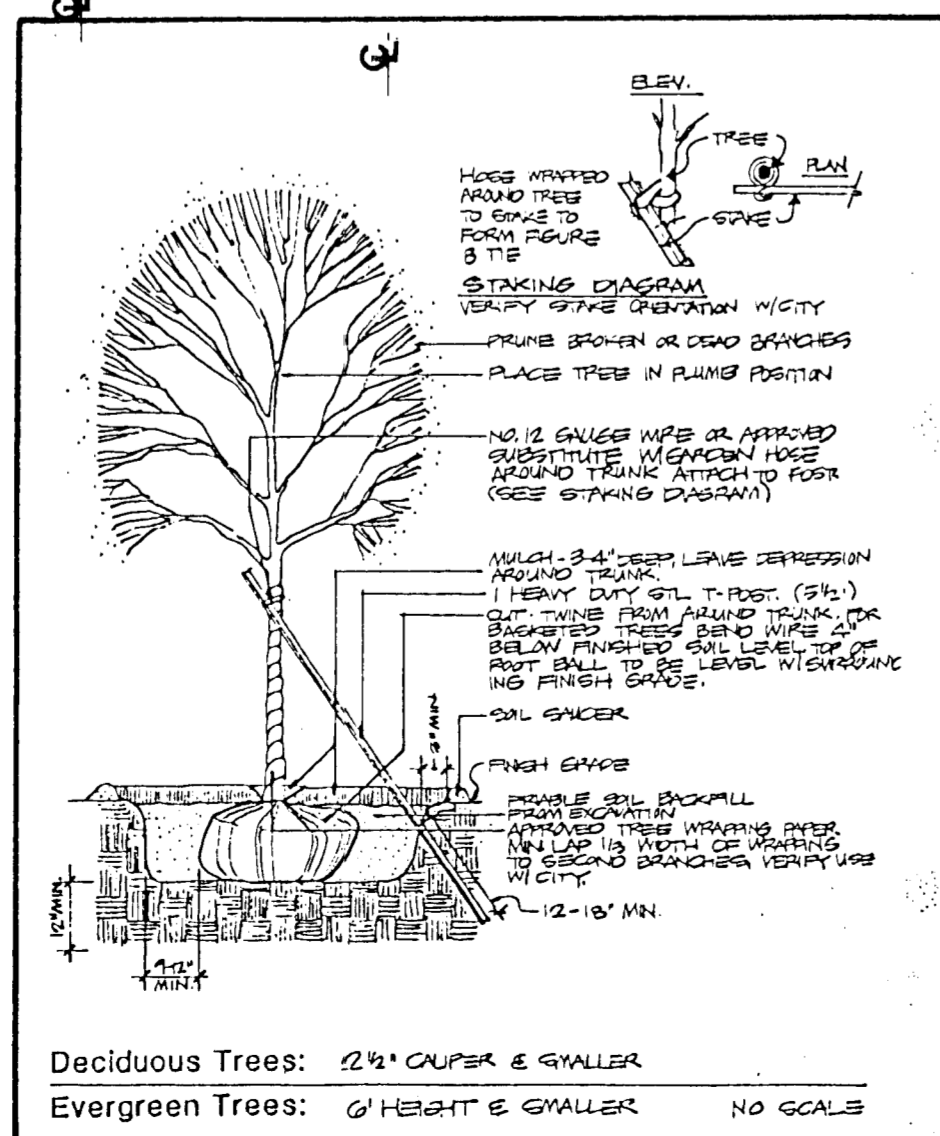
PROJECT NO.
472-76-245-82009-000-000-001

CITY OF WICHITA, KANSAS
MICHAEL E. LINDEBAK, CITY ENGINEER
INDEX NO. 705319



BENCHMARKS

- BM #1 C.O.W. B.M. Disc, Seneca & 47th St. S. 74' S & 44' E of CL's Elev. = 87.341
- BM #2 Near Sta. 69+60, 30' Right, Step nail in pole. Elev. = 89.44
- BM #3 Near Sta. 75+68, 30' Left, Step nail in pole. Elev. = 88.55
- BM #4 Near Sta. 81+78, 30' Right, Step nail in pole. Elev. = 89.86
- BM #5 C.O.W. B.M. Disc, Seneca & 43rd St. S. 48' E & 42.8' S of CL's Elev. = 88.008
- BM #6 Near Sta. 94+85, 30' Left, Step nail in pole. Elev. = 89.83
- BM #7 Near Sta. 102+30, 28' Right, Step nail in pole. Elev. = 90.75
- BM #8 Near Sta. 110+50, 30' Left, Step nail in pole. Elev. = 93.40
- BM #9 C.O.W. B.M. Disc, Seneca & MacArthur Road 86' N & 28.5' W of Sec. Cor. Elev. = 90.370



PLANT LIST

QUANT.	COMMON NAME / BOTANICAL NAME	SIZE	COND.	REMARKS
6	MARSHALL SEEDLESS ASH <i>Fraxinus pennsylvanica</i> 'Marshall Seedless'	2 - 2 1/2"	BB	
4	ROSEHILL ASH <i>Fraxinus americana</i> 'Rosehill'	2 - 2 1/2"	BB	
14	SHADEMASTER HONEYLOCUST <i>Gleditsia triacanthos</i> 'Shademaster'	2 - 2 1/2"	BB	
6	AUTUMN PURPLE ASH <i>Fraxinus americana</i> 'Autumn purple'	2 - 2 1/2"	BB	
6	LACEBARK ELM <i>Ulmus parvifolia</i> 'Lacebark'	2 - 2 1/2"	BB	
2	CHINESE PISTACHE <i>Pistachia chinensis</i>	2 - 2 1/2"	BB	
33	CHANTICLEER PEAR <i>Pyrus calleryana</i> 'Chanticleer'	6 - 8'	BB	
9	INDIAN SUMMER CRABAPPLE <i>Malus</i> 'Indian Summer'	6 - 8'	BB	
9	GOLDENRAINTREE <i>Koelreuteria paniculata</i>	6 - 8'	BB	
8	VAN ESELTIME CRABAPPLE <i>Malus</i> 'Van Eseltine'	6 - 8'	BB	
8	SPRING SNOW CRABAPPLE <i>Malus</i> 'Spring Snow'	6 - 8'	BB	
2	SNOWDRIFT CRABAPPLE <i>Malus</i> 'Snowdrift'	6 - 8'	BB	
9	PRAIRIE FIRE CRABAPPLE <i>Malus</i> 'Prairie Fire'	6 - 8'	BB	

Note: Sidewalk is to be constructed on the east side of Seneca from Sta. 101+50 to MacArthur Rd. Field engineer to adjust tree locations for future sidewalk construction.

NOTE: TRAFFIC TO BE CARRIED THRU CONSTRUCTION

MKEC 2-3-92

SOUTH SENECA IMPROVEMENTS

TITLE SHEET

48th St. So. to MacArthur Rd.

MID-KANSAS ENGINEERING CONSULTANTS PA
3500 NORTH ROCK ROAD
BUILDING #800
WICHITA, KANSAS 67226
636-5566

Sheet 1 of 8