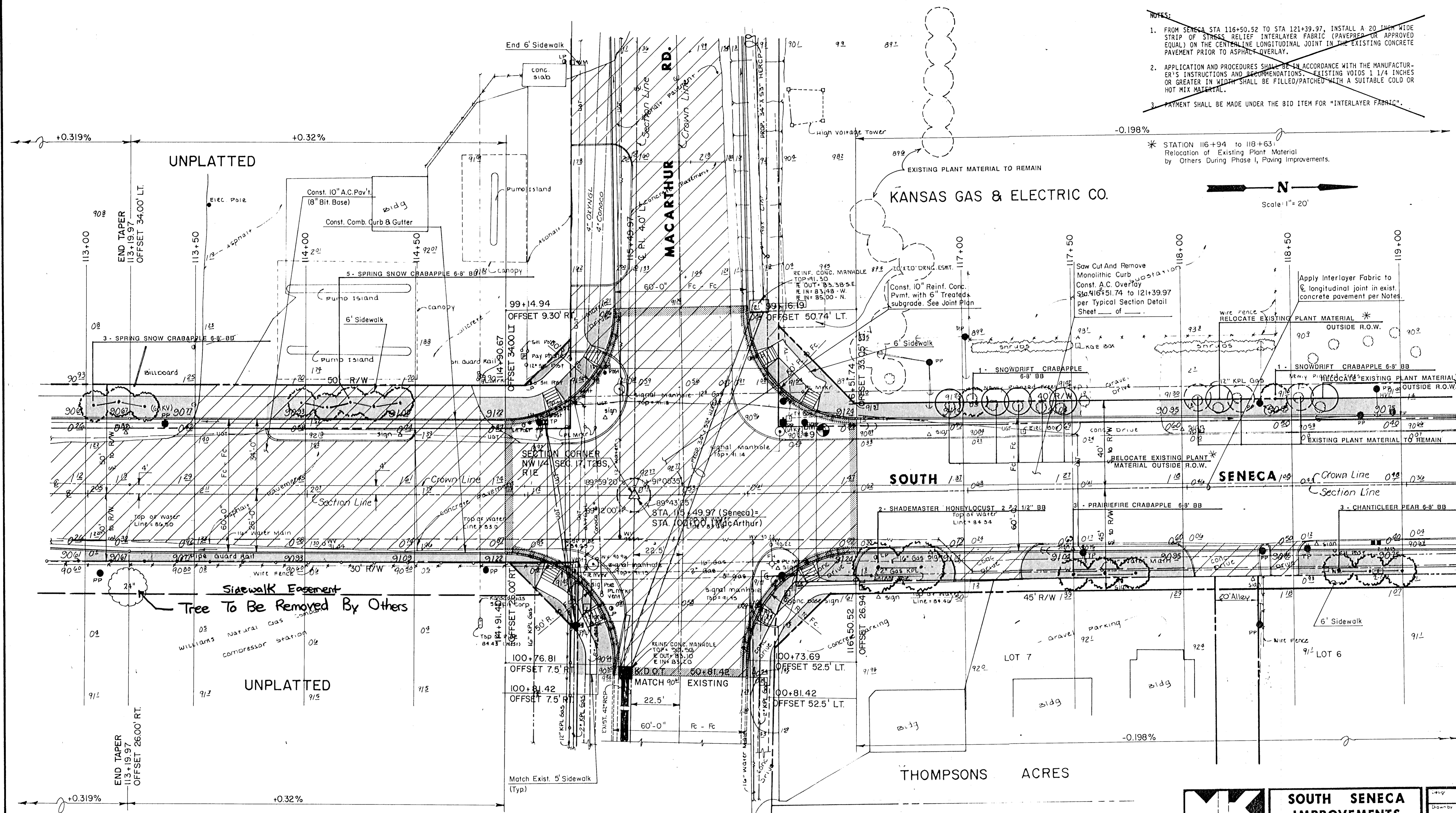
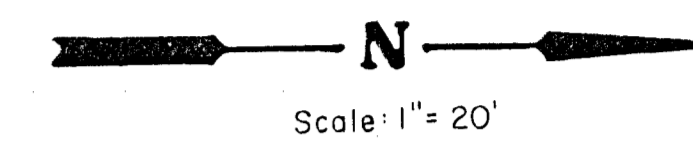


- NOTES:
1. FROM SENECA STA 116+50.52 TO STA 121+39.97, INSTALL A 20' WIDE STRIP OF STRESS RELIEF INTERLAYER FABRIC (PAVEPREP OR APPROVED EQUAL) ON THE CENTERLINE LONGITUDINAL JOINT IN THE EXISTING CONCRETE PAVEMENT PRIOR TO ASPHALT OVERLAY.
 2. APPLICATION AND PROCEDURES SHALL BE IN ACCORDANCE WITH THE MANUFACTURER'S INSTRUCTIONS AND RECOMMENDATIONS. EXISTING VOIDS 1 1/4" INCHES OR GREATER IN WIDTH SHALL BE FILLED/PATCHED WITH A SUITABLE COLD OR HOT MIX MATERIAL.
 3. PAYMENT SHALL BE MADE UNDER THE BID ITEM FOR "INTERLAYER FABRIC".

* STATION 116+94 TO 118+63:
Relocation of Existing Plant Material by Others During Phase I, Paving Improvements.



- Ref: Sec. Cor. Sta. 115+49.97 (Seneca)
1. Thimble with 1" iron pipe
 2. 81.00' N.W. to Nail in Bottle Cap in L.P.
 3. 70.15' N.N.W. to "+" cut on S.E. Cor. of MH.
 4. 72.71' N.E. to "+" cut on S. side of MH
 5. 34.38' S.E. to "+" cut on N.W. Cor. of MH

INTERSECTION QUANTITIES

1951.6 SY. 10" REIN. CONCRETE PAVEMENT
333.3 LF. COMBINED CURB & GUTTER (TYPE I)
2050.8 SY. SUBGRADE STABILIZATION MANIPULATION

	SOUTH SENECA IMPROVEMENTS	Drawn by Checked by Date 100 no
	LANDSCAPE PLAN	Sheet 5
	48TH ST. SO. TO MACARTHUR RD.	of 8

MID-KANSAS ENGINEERING CONSULTANTS PA
 3500 NORTH ROCK ROAD
 BUILDING #800
 WICHITA, KANSAS 67226
 636-5566