

INDEX OF SHEETS

SHEET NO.:	1	TITLE SHEET
	2	GENERAL NOTES AND TYPICAL SECTIONS
	3-7	PLAN SHEETS
	8	CONC. PAVING PLAN
	9-10	STORM SEWER PROFILE SHEET
	11-13	INTERSECTION DETAILS
	14	SUMMARY OF QUANTITIES
	15	SUMMARY OF QUANTITIES (SURFACING)
	16-20	TEMPORARY WATER POLLUTION CONTROL
	21	EROSION CONTROL (SEEDING)
	22	CURB & GUTTER & COMB. CURB & GUTTER
	23	SIDEWALK & STEPS
	24	CONC. PAVEMENT, DOWEL JOINTED, NON-REINFORCED
	25	CONTRACTION AND EXPANSION JOINTS
	26	STANDARD DRIVE ENTRANCE
	27	PRE-CAST MANHOLE
	28	R.C. MANHOLE
	29	TYPE 'I' CURB INLET
	30-31	REINFORCING STEEL FOR INLETS AND MANHOLES
	32	SCHEDULE OF INLETS AND MANHOLES
	33	TRAFFIC SIGNAL PLAN
	34	SIGNAL QUANTITIES SHEET
	35	SERVICE/JUNCTION BOX, CONTROLLER PAD DETAILS
	36	STEEL SIGNAL POLE ASSEMBLY DETAILS
	37	POWER POLE AND SPAN POLE ASSEMBLY
	38	LOOP DETECTORS
	39-44	TRAFFIC SIGNAL SPECIFICATIONS
	45	TRAFFIC SIGNAL SPECIFICATIONS LIGHT POLE FOOTING
	46	PAVEMENT MARKING PLAN
	47	TYP. MISC. PAVEMENT MARKING DETAIL SHEET
	48	SUMMARY AND RECAPITULATION OF PAVEMENT MARKING QUANTITIES
	49	TRAFFIC CONTROL - GENERAL NOTES
	50	TYPICAL TRAFFIC CONTROL
	51-54	TRAFFIC CONTROL PLAN
	55	TEMPORARY TRAFFIC SIGNAL PLAN
	56	SUMMARY OF DEVICES AND RECAPITULATION OF QUANTITIES
	57	I-104 ("GIVE 'EM A BREAK") SIGN
	58	DESIGN DETAILS FOR BARRICADES
	59	TYPICAL TRAFFIC CONTROL SIGNS
	60-68	CROSS-SECTIONS

STATE OF KANSAS
DEPARTMENT OF TRANSPORTATION



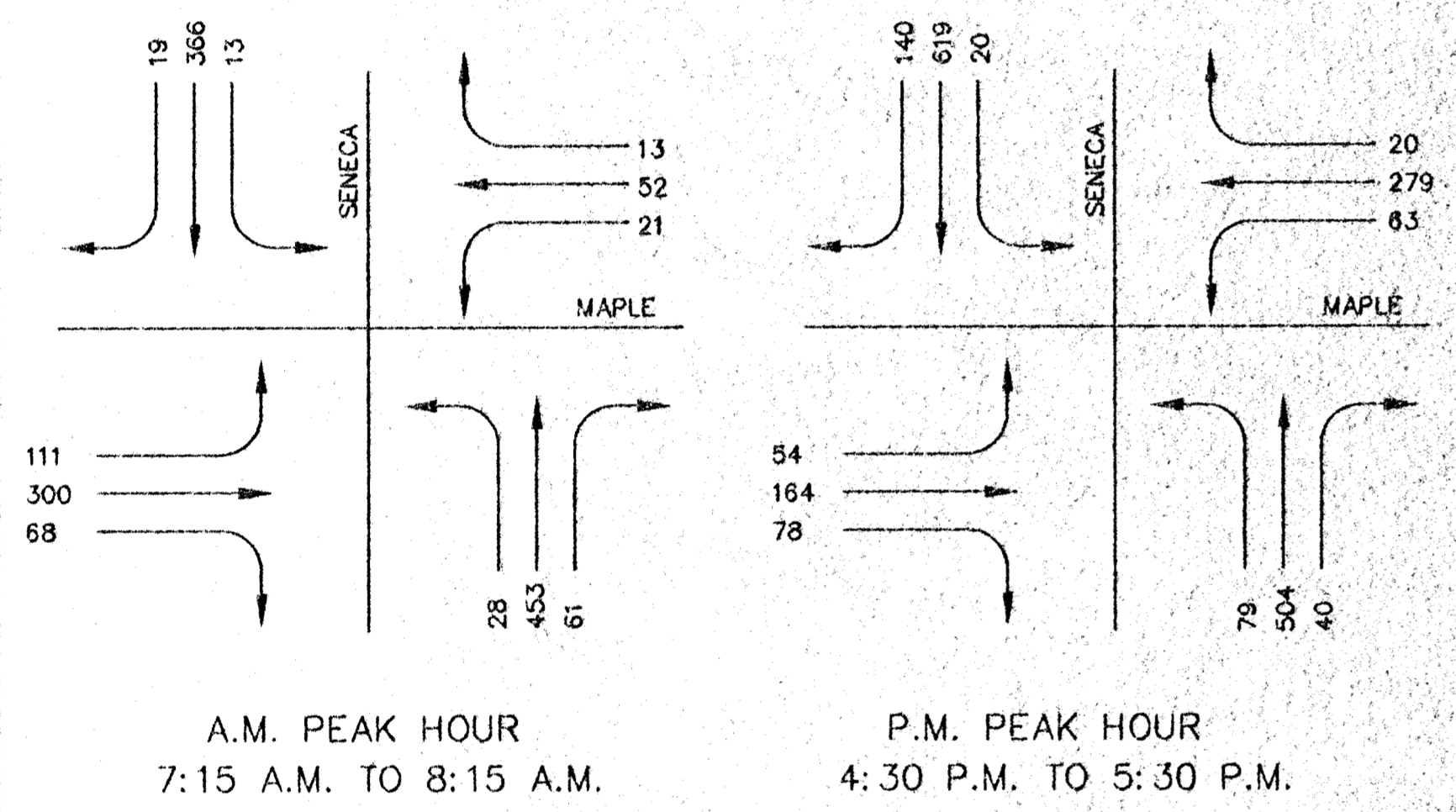
PLAN AND PROFILE OF PROPOSED
FEDERAL AID PROJECT

SENECA AND MAPLE INTERSECTION
WICHITA, SEDGWICK COUNTY, KANSAS
POPULATION = 304,011

FHWA REQ. NO.	STATE	PROJECT NO.:	YEAR	SHEET NUMBER	TOTAL SHEETS
7	KANSAS	87 N-0099-01	1999	1	68

SIP-N009(901)

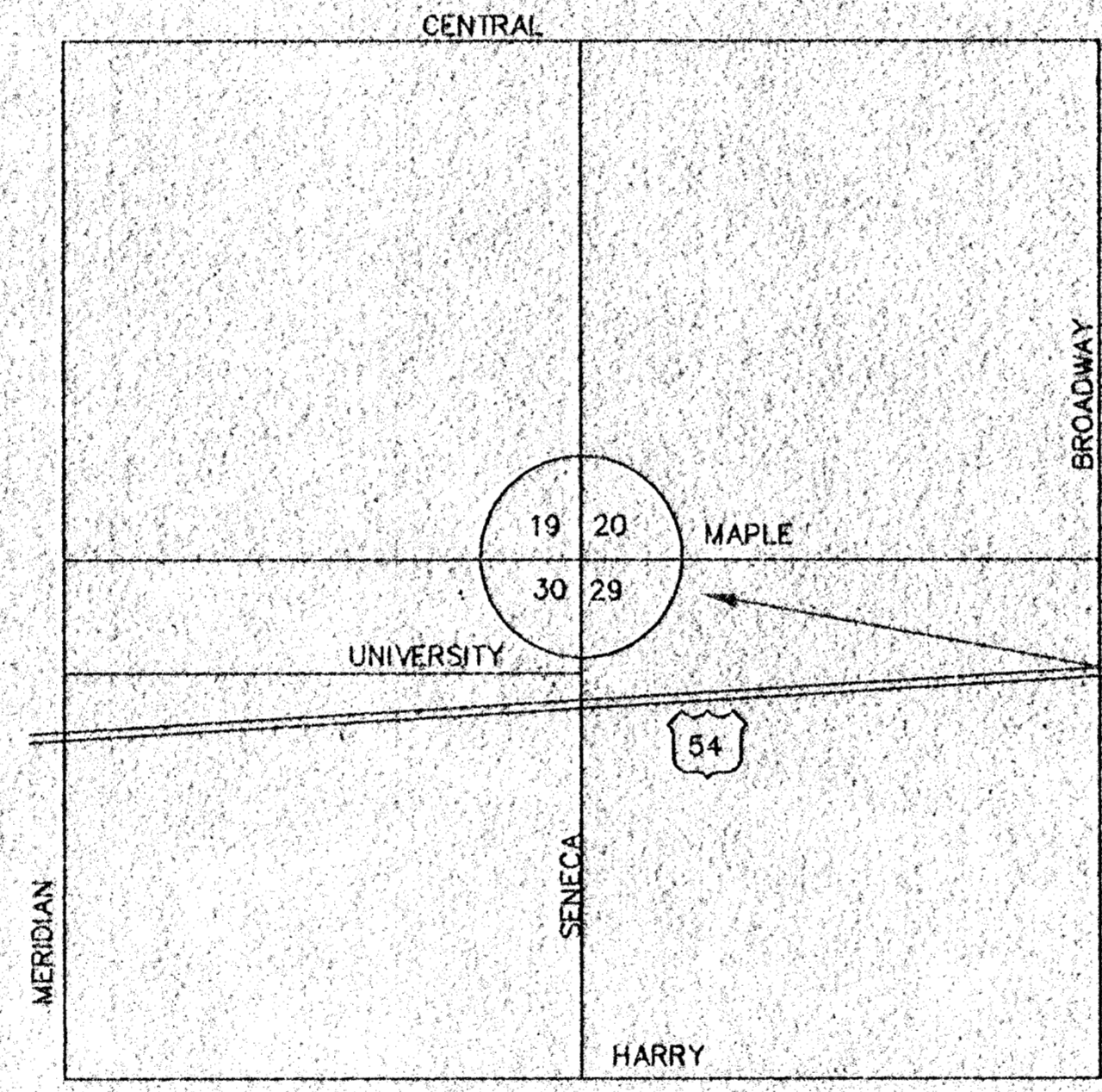
GRADING
SURFACING
CONCRETE PAVEMENT
SEEDING
SIGNALIZATION
PAVEMENT MARKINGS



DESIGN DESIGNATION

MAPLE & SENECA
AADT (1994) = 21,333
AADT (2010) = 28,500
T = 3 %
V = 60 KM/HOUR
CLEAR ZONE = 1.8 M
CONVENTIONAL SIGNS

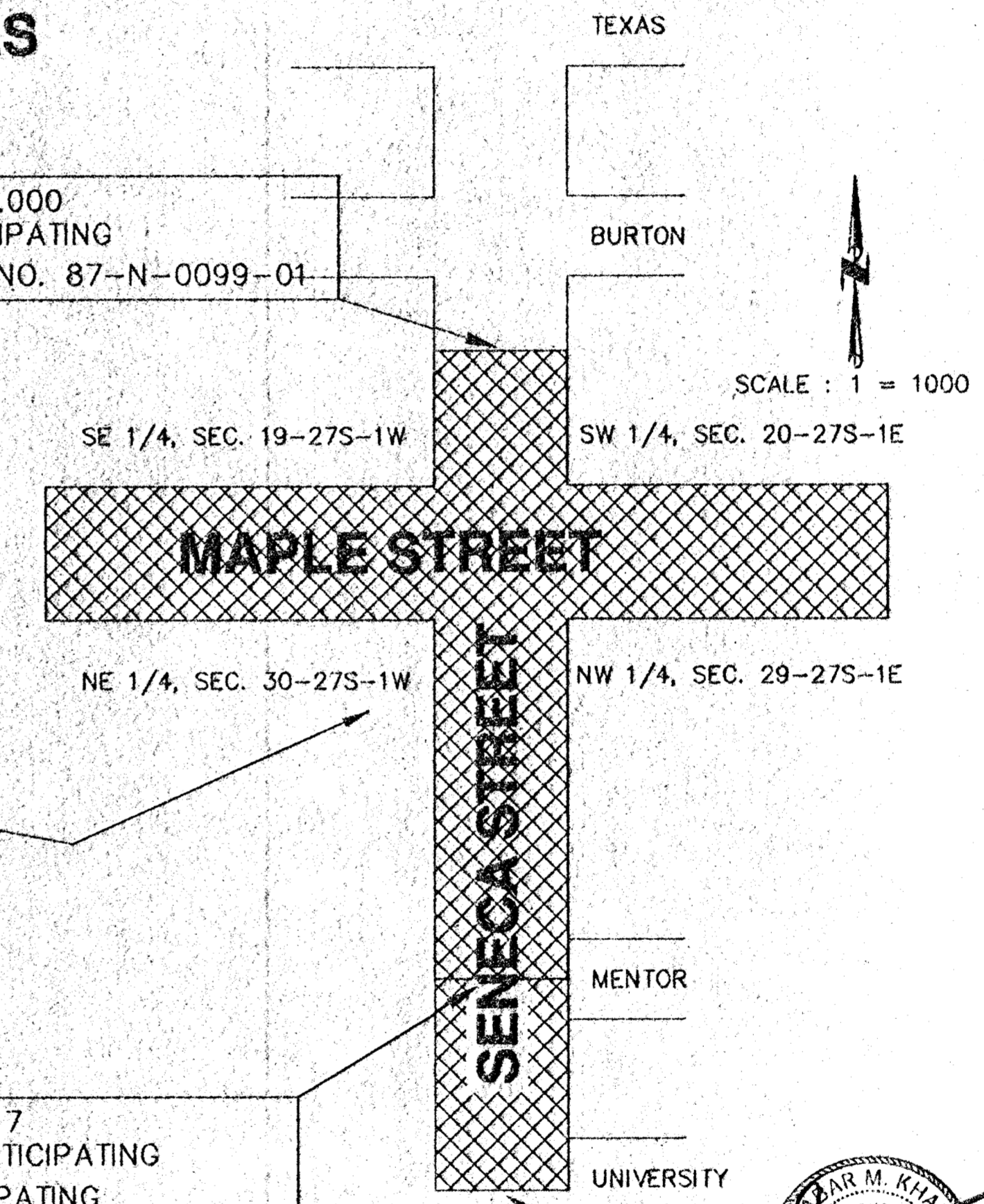
COUNTY LINE	-----	CENTER LINE OF PROJECT	-----
CITY LIMITS	-----	TERRACE	-----
STATE OR NATIONAL LINE	-----	CULVERTS	-----
TOWNSHIP, SECTION or GRANT LINE	-----	DROP INLET & STORM SEWER	-----
PROPERTY LINE	-----	ACCESS CONTROL	-----
HIGHWAY FENCE	-----	POWER POLE	-----
EXISTING FENCE	-----	TELEPHONE POLE	-----
GUARD FENCE	-----	MARSH	-----
CONSTRUCTION LIMITS	-----	HEDGE	-----
RIGHT OF WAY LINE	-----	TREES	-----
TRAVELED WAY	-----	PROFILE ELEVATION	-----
RAILROADS	-----	STREAM or CREEK	-----



STA. 1+078.000
END. PARTICIPATING
END PROJ. NO. 87-N-0099-01

STA. 0+856.617
END. NON-PARTICIPATING
BEGIN. PARTICIPATING

STA. 0+704.821
BEGIN PROJ. NO. 87-N-0099-01



SCALE : 1 = 1000

TRAFFIC TO BE CARRIED THROUGH CONSTRUCTION. SEE SHEETS 51-54 FOR CONSTRUCTION TRAFFIC CONTROL PLAN.

KDOT METRIC



All dimensions shown, without an SI suffix, are in millimeters. All elevations shown are in meters.

GROSS LENGTH OF PROJECT	373.179 m
EXCEPTIONS	0.00
ADDITIONS	0.00
NET LENGTH OF PROJECT	373.179 m
NET LENGTH OF BRIDGES	0.00 m
NET LENGTH OF ROAD	373.179 m

RECOM. FOR APPROVAL--DATE

CHIEF, BUREAU OF TRAFFIC ENGINEERING
KANSAS DEPARTMENT OF TRANSPORTATION

APPROVED -- DATE

STATE TRANSPORTATION ENGINEER
KANSAS DEPARTMENT OF TRANSPORTATION

APPROVED--DATE

MICHAEL E. LINDEBAK, P.E.
CITY ENGINEER
CITY OF WICHITA, SEDGWICK COUNTY, KANSAS

Municipal Engineers, P.A.
254-LAURA, SUITE 201, WICHITA, KANSAS 67211
316-262-3842 (TEL.)
316-262-3634 (FAX)