

POT: 3/4" Iron in Thimble, Sta. 0+710.370
 16.627 m SE to chiseled 'x' on top of west side of pole base
 18.603 m NW to capped property corner, 0.314 m North of sidewalk
 23.887 m to chiseled 'x' on back of curb, east side of Seneca, in front of Vacant Lot # 530

Sta. 0+726.072
 End return
 TC Elev. = 32.954

Sta. 0+740.000
 TC Elev. = 32.987

Sta. 0+760.000
 TC Elev. = 33.035

+ 0.24 %

Sta. 0+780.000
 TC Elev. = 32.083

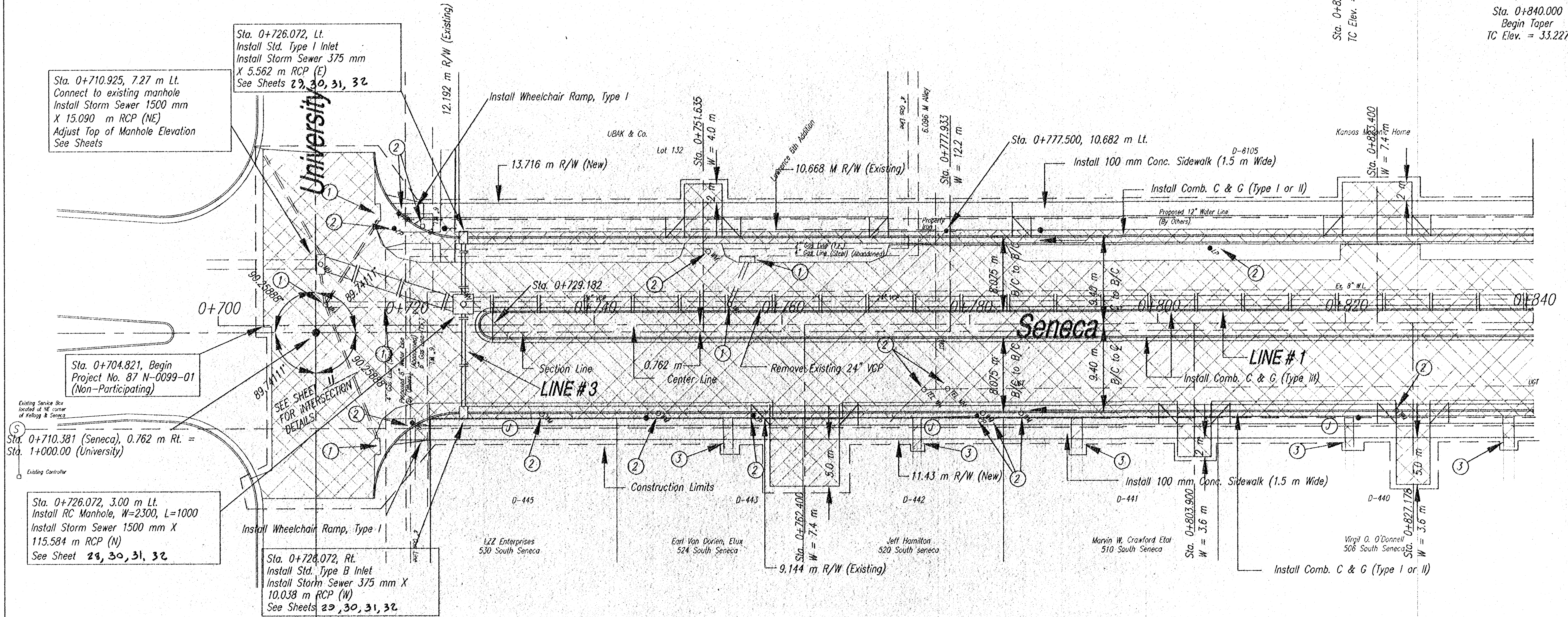
Sta. 0+800.000
 TC Elev. = 33.131

SCALE: 1:200

FHWA REG. NO.	STATE	PROJECT NO.	YEAR	SHEET NUMBER	TOTAL SHEETS
7	KANSAS	87 N-0099-01	1999	3	63

Sta. 0+820.000
 TC Elev. = 33.179

Sta. 0+840.000
 Begin Taper
 TC Elev. = 33.227



Sta. 0+710.925, 7.27 m Lt.
 Connect to existing manhole
 Install Storm Sewer 1500 mm
 X 15.090 m RCP (NE)
 Adjust Top of Manhole Elevation
 See Sheets 29, 30, 31, 32

Sta. 0+726.072, Lt.
 Install Std. Type I Inlet
 Install Storm Sewer 375 mm
 X 5.562 m RCP (E)
 See Sheets 29, 30, 31, 32

Sta. 0+704.821, Begin
 Project No. 87 N-0099-01
 (Non-Participating)

Sta. 0+710.381 (Seneca), 0.762 m Rt. =
 Sta. 1+000.00 (University)

Sta. 0+726.072, 3.00 m Lt.
 Install RC Manhole, W=2300, L=1000
 Install Storm Sewer 1500 mm X
 115.584 m RCP (N)
 See Sheet 29, 30, 31, 32

Sta. 0+726.072, Rt.
 Install Std. Type B Inlet
 Install Storm Sewer 375 mm X
 10.038 m RCP (W)
 See Sheets 29, 30, 31, 32

LEGEND:

- Remove Existing Pavement.
- Remove
- To Be Adjusted or Relocated by Others
- Remove and Install Sidewalk, 1 m Beyond R/W to match existing
- Install 50 mm RGC for Comm. Cable
- Install 50 mm PVC Conduit for Street Lights
- Install Junction Boxes @ 45 m Spacing
- Install Light Pole Footing

UTILITIES:

- Telephone SW Bell Telephone Co.
- Electric KGE Electric
- Gas KGE Gas
- Cable Multimedia Cablevision
- Water City of Wichita
- Sanitary Sewer City of Wichita

NOTES:

1. Install continuous 6-Pr., 19 AWG communication wire inside new 50 mm RGC between existing controller at Kellogg and Seneca and new controller at Maple and Seneca. This item shall not be paid for separately but shall be subsidiary to contract bid item 'Traffic Signal Installation'.
2. Bid item '50 mm Electric Conduit (non-metallic)' includes installation all elbows and sweeps necessary to route conduit into pole bases.
3. Contractor shall contact Kansas Gas Service so that adjustments to gas lines can be made which may be in conflict with proposed storm sewers.
4. See Sheet 45 for location of new light pole footings.
5. Existing asphalt removed from entrances shall be replaced with 150 mm Entrance (BM-2)

Bench Mark # 300: PK nail on top of 0.914 m tree stump, South of Kansas Masonic Home, Sta. 0+759.138, 27.432 m Lt., Elev. = 33.760

PLAN SHEET - SENECA
 Sta. 0+704.821 to Sta. 0+840.000

SCALE:	APPROVED:	DRAWN BY:
DATE:	CHECKED:	SHEET NO.:
PROJECT NO.:		

ME MUNICIPAL ENGINEERS, P.A.
 254-LAURA, SUITE 201, WICHITA, KANSAS 67211
 316-262-3342 (TEL.)
 316-262-8834 (FAX)