

FHWA REG. NO.	STATE	PROJECT NO.	YEAR	SHEET NUMBER	TOTAL SHEETS
7	KANSAS	87 N-0099-01	1999	4	68

SCALE: 1:200

POT: Section Corner: 3/4" Iron in Thimble, Sta. 1+000.000  
 17.752 m SW to nails on NE side of light pole  
 24.991 m NW to nails on SE side of Power Pole  
 13.525 m NE to nails on SW side of Power Pole  
 16.919 m SE to nails on NW side of Power Pole

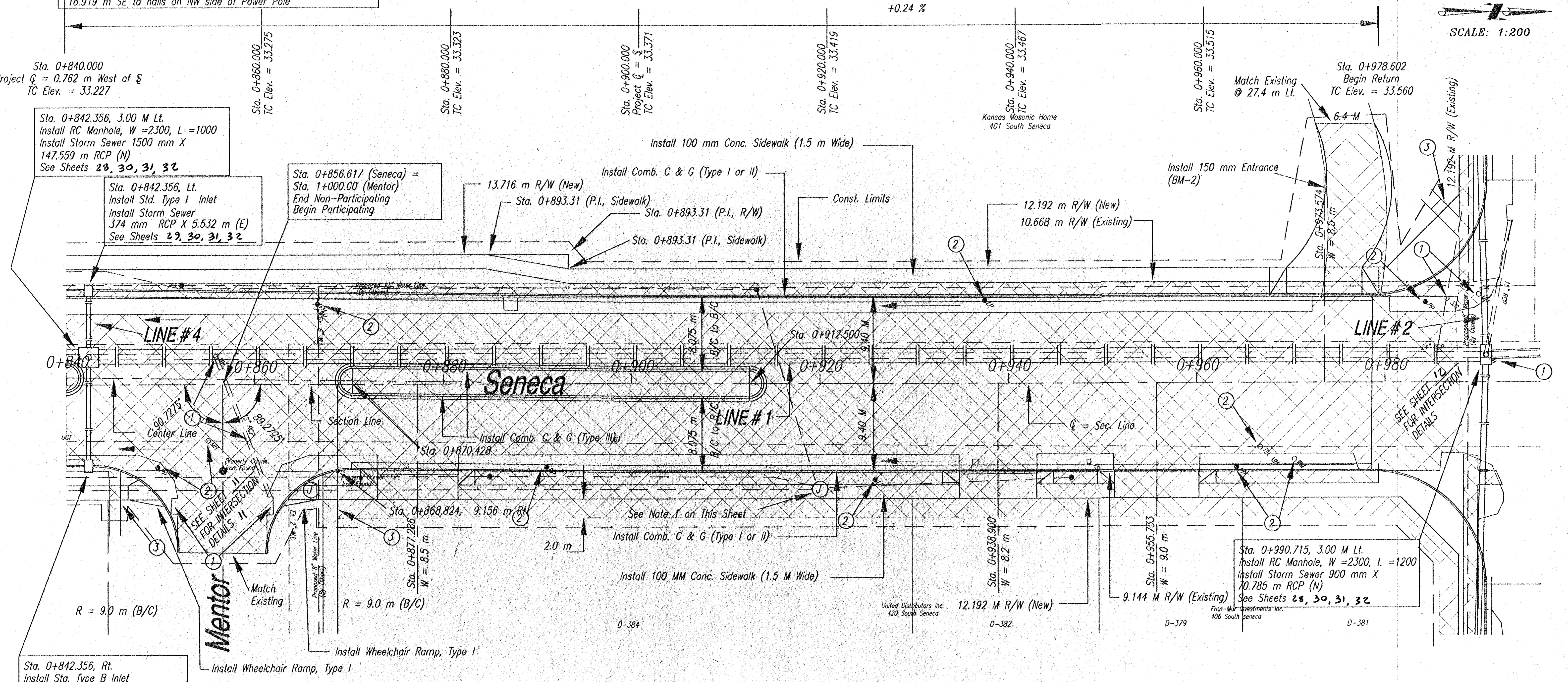
Sta. 0+840.000  
 Project  $\phi$  = 0.762 m West of  $\xi$   
 TC Elev. = 33.227

Sta. 0+842.356, 3.00 M Lt.  
 Install RC Manhole, W = 2300, L = 1000  
 Install Storm Sewer 1500 mm X  
 147.559 m RCP (N)  
 See Sheets 28, 30, 31, 32

Sta. 0+842.356, Lt.  
 Install Std. Type I Inlet  
 Install Storm Sewer  
 374 mm RCP X 5.532 m (E)  
 See Sheets 29, 30, 31, 32

Sta. 0+856.617 (Seneca) =  
 Sta. 1+000.00 (Mentor)  
 End Non-Participating  
 Begin Participating

Sta. 0+842.356, Rt.  
 Install Sta. Type B Inlet  
 Install Storm Sewer  
 375 mm RCP X 10.068 m (W)  
 See Sheets 29, 30, 31, 32



- LEGEND:**
- Remove Existing Pavement
  - Remove
  - To Be Adjusted or Relocated by Others
  - Remove and Install Sidewalk, 1 m Beyond R/W to match existing
  - Install 50 mm RGC for Comm. Cable
  - Install 50 mm PVC Conduit for Street Lights
  - Install Junction Boxes @ 45 m Spacing
  - Install Light Pole Footing

Note 1: See Sheet 33 for location of Conduit and Junction Boxes North of this Junction Box.  
 Note 2: Contractor shall contact KGE to verify location of power to street lights and location for crossing Seneca.

Bench Mark # 400: City of Wichita standard disk, 11.887 m West and 9.937 m South of centerlines of Maple & Seneca. @ Southwest corner of intersection. Elev. = 33.461

**PLAN SHEET - SENECA**  
 Sta. 0+840.000 to Sta. 0+978.602

SCALE:	APPROVED:	DRAWN BY:
DATE:	CHECKED:	CHECKED:
PROJECT NO.		SHEET NO.:

**ME MUNICIPAL ENGINEERS, P.A.**  
 254-LAURA, SUITE 201, WICHITA, KANSAS 67211  
 318-262-3842 (TEL.)  
 316-262-8834 (FAX)