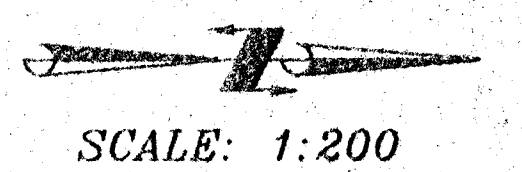


POT: 3/4" Iron in Thimble @ Sta. 1+382.140
 18.840 M SW to North face of Light Pole
 18.227 M NW to North face of Light Pole
 19.660 M NE to North face of Light Pole
 18.303 M SE to North face of Light Pole

FWHA REG. NO.	STATE	PROJECT NO.:	YEAR	SHEET NUMBER	TOTAL SHEETS
7	KANSAS	87-N-0099-01	1999	5	68



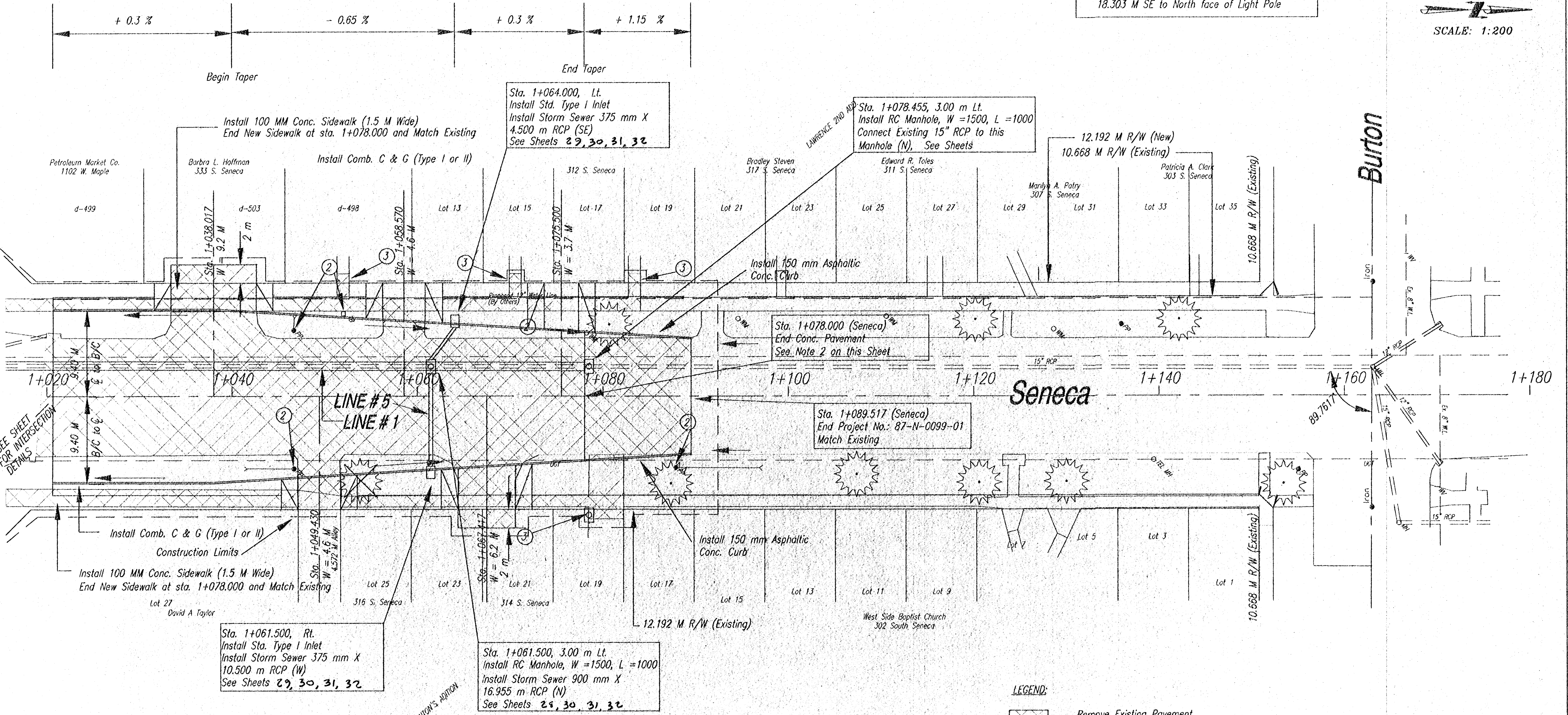
Sta. 1+020.650
End return
TC Elev. = 33.560

Sta. 1+040.000
PVI, NO VC
TC Elev. = 33.618

Sta. 1+064.000
PVI, NO VC
TC Elev. = 33.462

Sta. 1+078.000
TC Elev. = 33.504

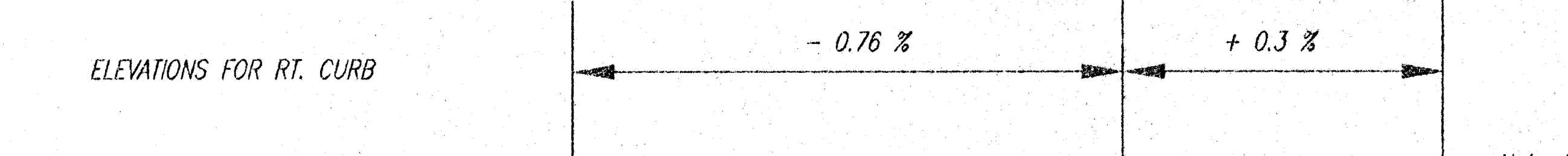
Sta. 1+089.517
TC Elev. = 33.636
Match Existing



Sta. 1+040.000
PVI, NO VC
TC Elev. = 33.618

Sta. 1+066.500
PVI, NO VC
TC Elev. = 33.455

Sta. 1+078.000
TC Elev. = 33.504



Note 1: See Sheet 33 for location of Conduit and Junction Boxes South of this Junction Box.

Note 2: Install 150 mm (B.M.-2) Pavement from Sta. 1+078.000 to Sta. 1+089.517. Install 150 mm Asphaltic Concrete Curb on East and West side of road within these limits.

- LEGEND:**
- Remove Existing Pavement
 - Remove
 - To Be Adjusted or Relocated by Others
 - Remove and Install Sidewalk, 1 m Beyond R/W to match existing
 - Install 50 mm RGC for Comm. Cable
 - Install 50 mm PVC Conduit for Street Lights
 - Install Junction Boxes @ 45 m Spacing
 - Install Light Pole Footing

Bench Mark # 500: Chiseled 'x' @ centerline of 1.219 M sidewalk, Southeast corner of Seneca & Burton. Sta. 1+150.501, 9.753 M Rt. Elev. = 34.031

PLAN SHEET - SENECA
 From Sta. 1+020.65 to Sta. 1+162.94

SCALE:	APPROVED:	DRAWN BY:
DATE:	CHECKED:	SHEET NO.:
PROJECT NO.		

ME MUNICIPAL ENGINEERS, P.A.
 254 LAURA, SUITE 201, WICHITA, KANSAS 67211
 316-262-1842 (TEL.)
 316-262-8834 (FAX)