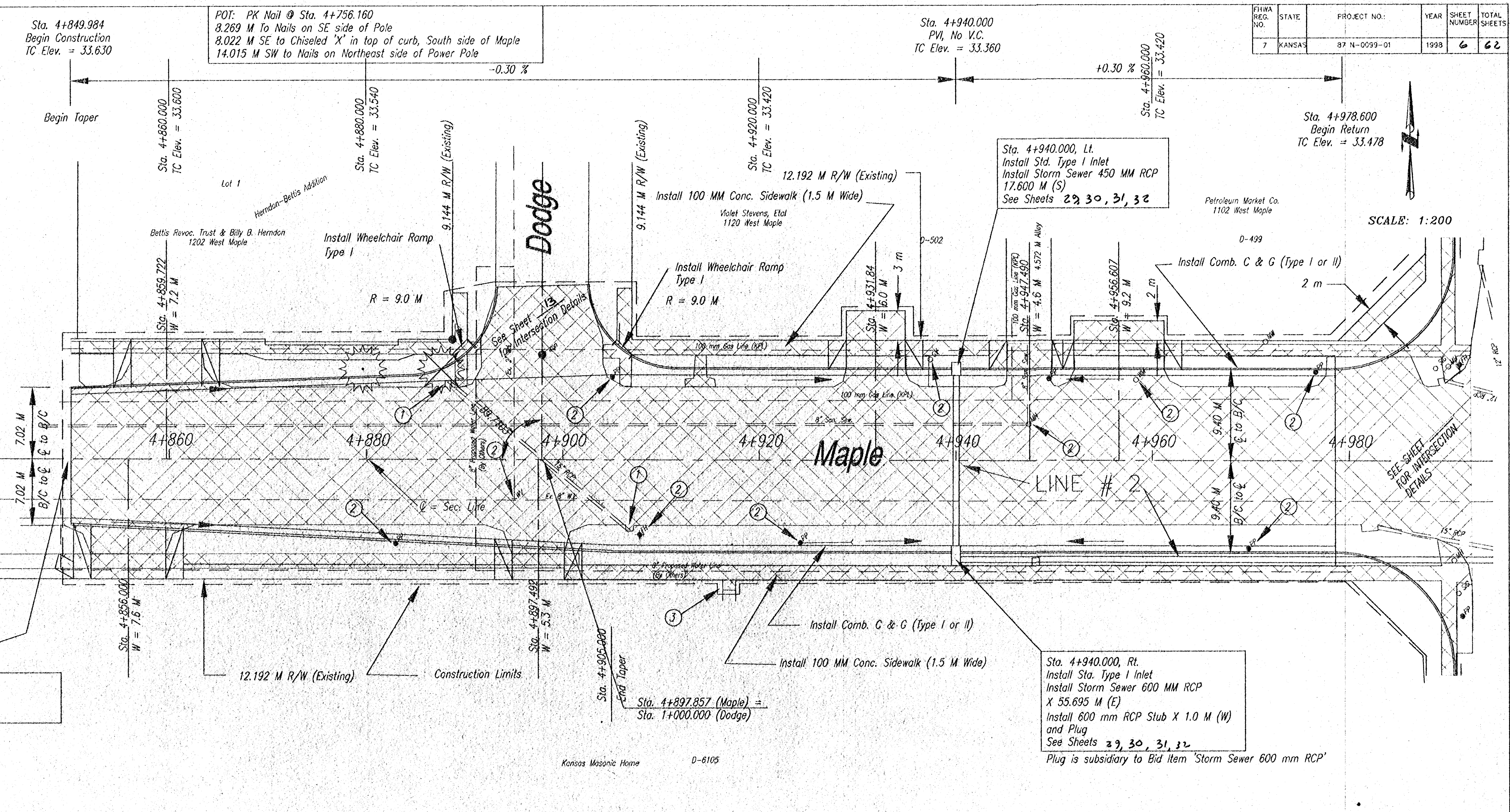


FIWA REG. NO.	STATE	PROJECT NO.	YEAR	SHEET NUMBER	TOTAL SHEETS
7	KANSAS	87 N-0099-01	1998	6	62



Sta. 4+849.984
Begin Construction
Match Existing

Sta. 4+940.000, Rt.
Install Sta. Type I Inlet
Install Storm Sewer 600 MM RCP
X 55.695 M (E)
Install 600 mm RCP Stub X 1.0 M (W)
and Plug
See Sheets 29, 30, 31, 32
Plug is subsidiary to Bid Item "Storm Sewer 600 mm RCP"

- LEGEND:**
- Remove Existing Pavement
 - ① Remove
 - ② To Be Adjusted or Relocated by Others
 - ③ Remove and Install Sidewalk, 1 M Beyond R/W to match existing
 - Install 50MM RGC for Comm. Cable
 - ⓐ Install Junction Boxes @ 45 M Spacing

Kansas Masonic Home D-6105

Bench Mark # 100: Chiseled Square on top of NE corner of flagpole base on North side of Masonic Home, Sta. 4+846.835, Rt. Elev. = 34.250

PLAN SHEET - MAPLE
From Sta. 4+849.984 to Sta. 4+978.600

SCALE:	APPROVED:	DRAWN BY:
DATE:	CHECKED:	
PROJECT NO.	SHEET NO.	

ME MUNICIPAL ENGINEERS, P.A.
254-LAURA, SUITE 201, WICHITA, KANSAS 67211
316-262-3342 (TEL.)
316-262-6634 (FAX)