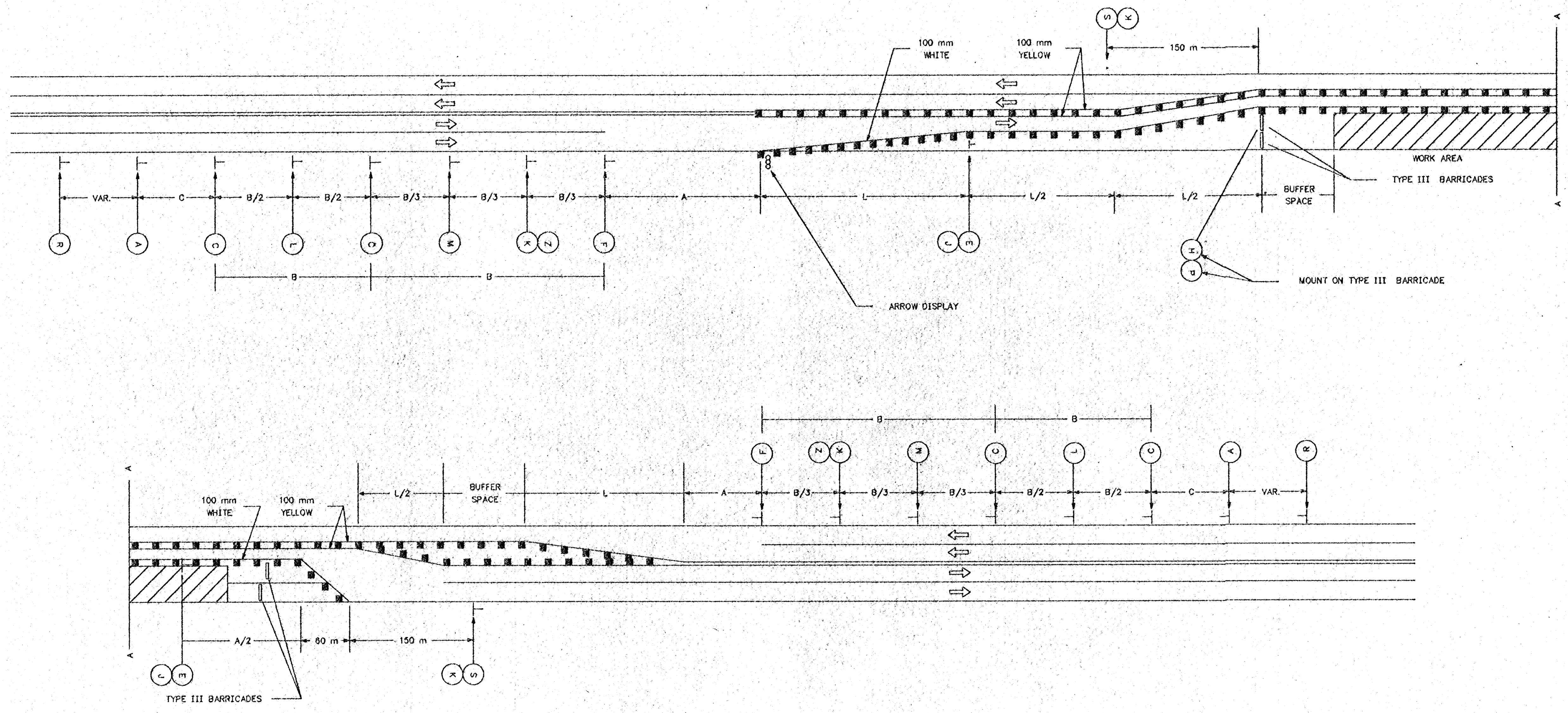


REFER TO STD. TE753SI FOR IDENTIFICATION OF SIGNS FOR HANDLING TRAFFIC THROUGH CONSTRUCTION.  
 REFER TO STD. 735SI FOR DIMENSIONS.  
 ■ = CHANNELIZING DEVICES



Plotted By: @USERNAME@hacher Bldg., 4th Floor  
 Plot File: @@@@@@@@@@IGNSPF@@@@@@@@@@@@@@@@  
 Plot Date: @@@@@SYTIME@@@@@

3					
2					
1	10/10/98	ADDED 14-20 AND END OF WORK ZONE R2-1 SIGNS	WPR	NAB	
NO.	DATE	REVISION	BY	APP'D	

KANSAS DEPARTMENT OF TRANSPORTATION  
 TYPICAL TRAFFIC CONTROL  
 FOUR-LANE UNDIVIDED HIGHWAY  
 ONE-HALF ROADWAY CLOSED

TE753SI 7/1/94

DESIGNED	DETAILER	APP'D	INCH. A. TRACY
DESIGN CK.	DETAIL CK.	QUAN. CK.	TRACE CK.