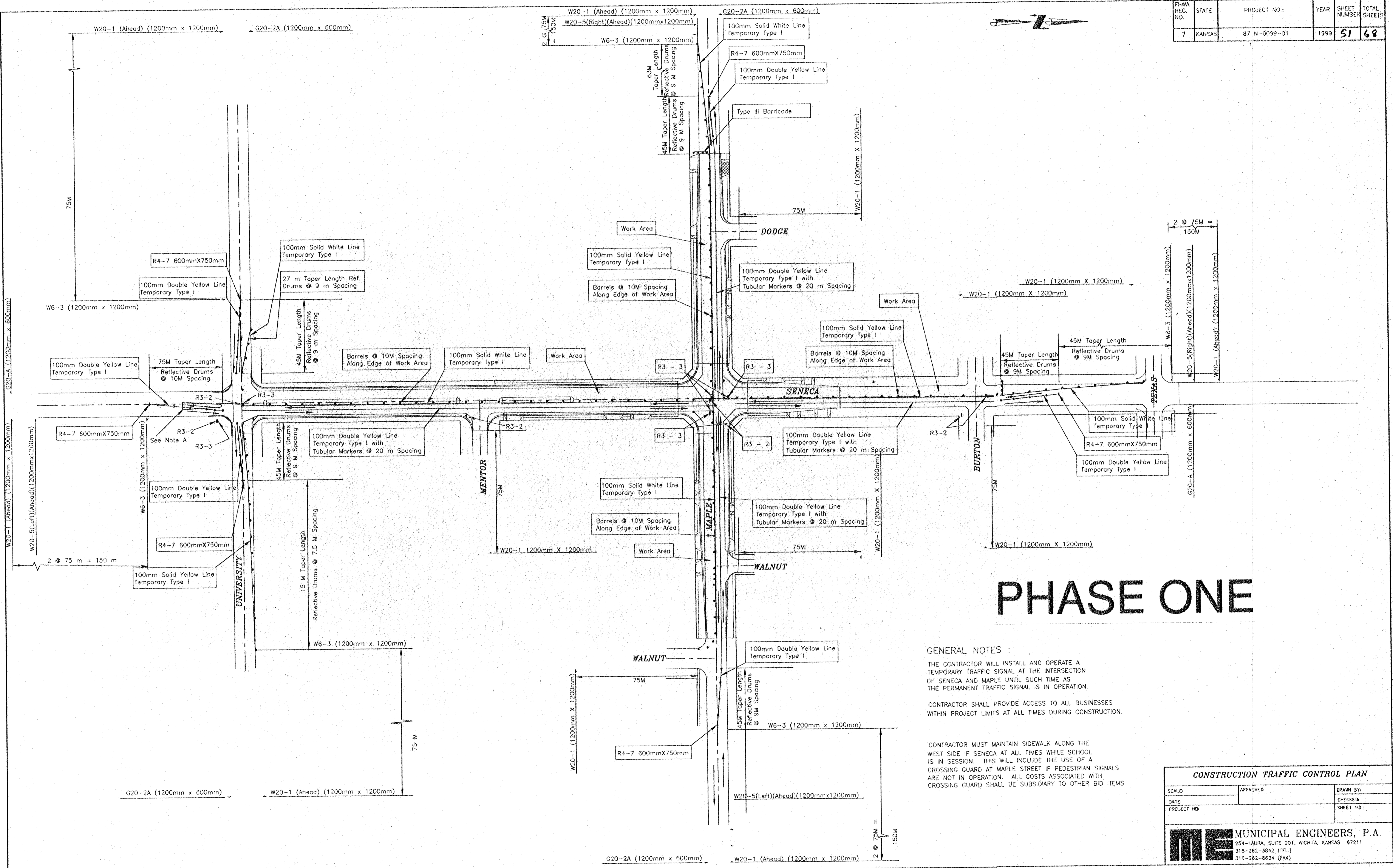


FHWA REG. NO.	STATE	PROJECT NO.:	YEAR	SHEET NUMBER	TOTAL SHEETS
7	KANSAS	87 N-0099-01	1999	51	68



PHASE ONE

GENERAL NOTES :

THE CONTRACTOR WILL INSTALL AND OPERATE A TEMPORARY TRAFFIC SIGNAL AT THE INTERSECTION OF SENECA AND MAPLE UNTIL SUCH TIME AS THE PERMANENT TRAFFIC SIGNAL IS IN OPERATION.

CONTRACTOR SHALL PROVIDE ACCESS TO ALL BUSINESSES WITHIN PROJECT LIMITS AT ALL TIMES DURING CONSTRUCTION.

CONTRACTOR MUST MAINTAIN SIDEWALK ALONG THE WEST SIDE OF SENECA AT ALL TIMES WHILE SCHOOL IS IN SESSION. THIS WILL INCLUDE THE USE OF A CROSSING GUARD AT MAPLE STREET IF PEDESTRIAN SIGNALS ARE NOT IN OPERATION. ALL COSTS ASSOCIATED WITH CROSSING GUARD SHALL BE SUBSIDIARY TO OTHER BID ITEMS.

CONSTRUCTION TRAFFIC CONTROL PLAN		
SCALE:	APPROVED:	DRAWN BY:
DATE:	CHECKED:	SHEET NO.:
PROJECT NO.:		
MUNICIPAL ENGINEERS, P.A. 254-LALRA, SUITE 201, WICHITA, KANSAS 67211 316-262-3842 (TEL.) 316-262-8834 (FAX)		