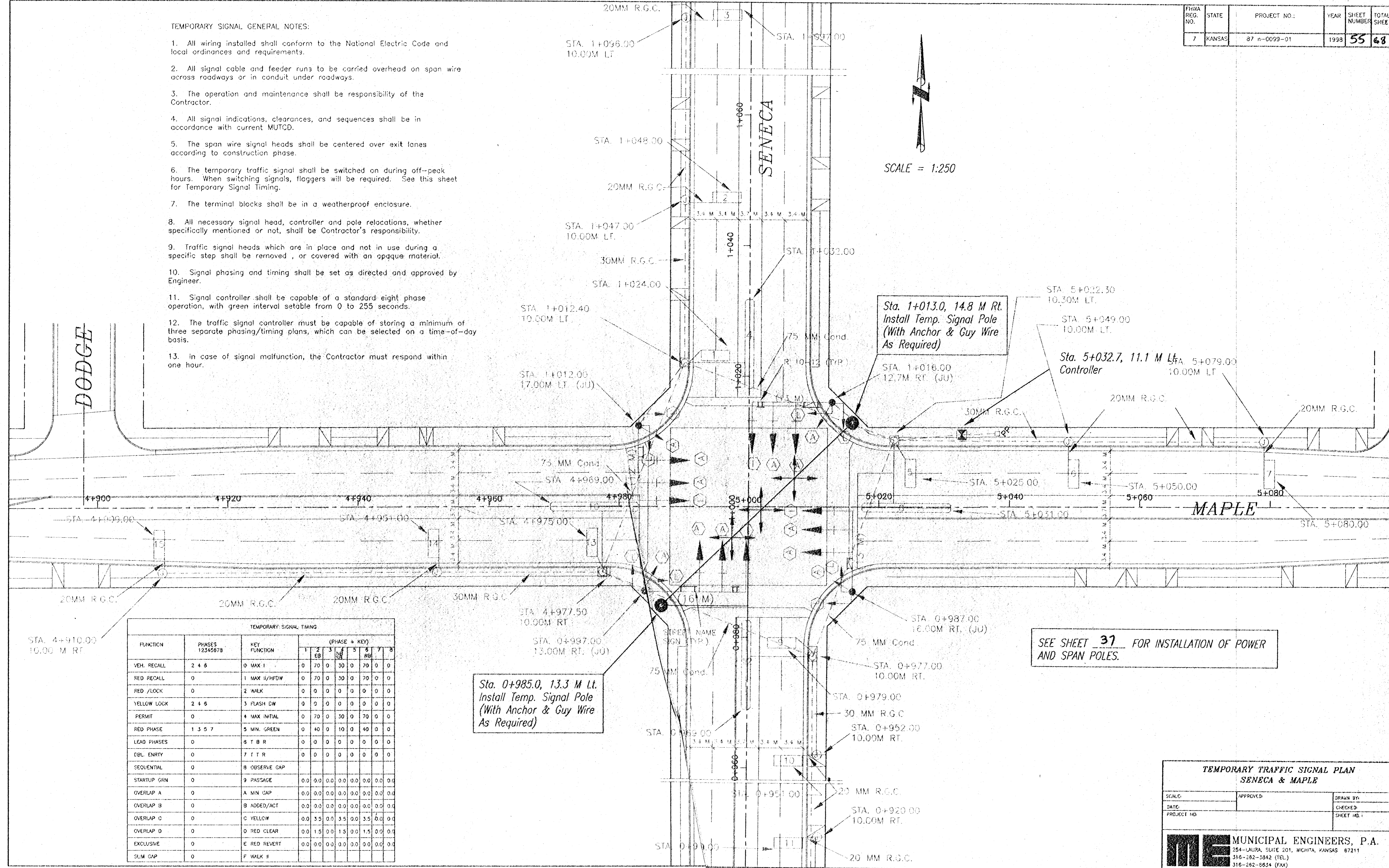
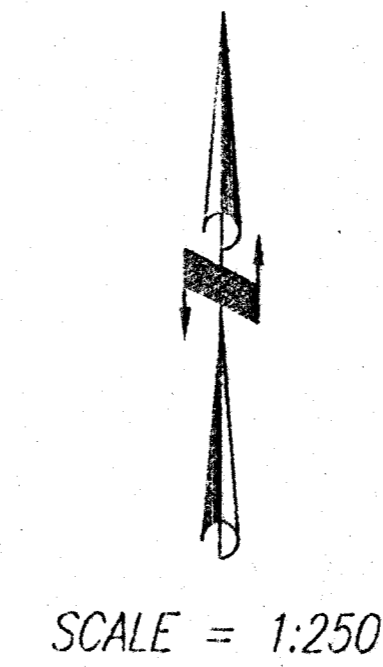


TEMPORARY SIGNAL GENERAL NOTES:

- All wiring installed shall conform to the National Electric Code and local ordinances and requirements.
- All signal cable and feeder runs to be carried overhead on span wire across roadways or in conduit under roadways.
- The operation and maintenance shall be responsibility of the Contractor.
- All signal indications, clearances, and sequences shall be in accordance with current MUTCD.
- The span wire signal heads shall be centered over exit lanes according to construction phase.
- The temporary traffic signal shall be switched on during off-peak hours. When switching signals, flaggers will be required. See this sheet for Temporary Signal Timing.
- The terminal blocks shall be in a weatherproof enclosure.
- All necessary signal head, controller and pole relocations, whether specifically mentioned or not, shall be Contractor's responsibility.
- Traffic signal heads which are in place and not in use during a specific step shall be removed, or covered with an opaque material.
- Signal phasing and timing shall be set as directed and approved by Engineer.
- Signal controller shall be capable of a standard eight phase operation, with green interval setable from 0 to 255 seconds.
- The traffic signal controller must be capable of storing a minimum of three separate phasing/timing plans, which can be selected on a time-of-day basis.
- In case of signal malfunction, the Contractor must respond within one hour.



FUNCTION	PHASES 12345678	KEY FUNCTION	(PHASE + KEY)							
			1	2	3	4	5	6	7	8
VEH. RECALL	2 4 8	0 MAX I	0	70	0	30	0	70	0	0
RED RECALL	0	1 MAX II/HFDW	0	70	0	30	0	70	0	0
RED /LOCK	0	2 WALK	0	0	0	0	0	0	0	0
YELLOW LOCK	2 4 8	3 FLASH DW	0	0	0	0	0	0	0	0
PERMIT	0	4 MAX INITIAL	0	70	0	30	0	70	0	0
RED PHASE	1 3 5 7	5 MIN. GREEN	0	40	0	10	0	40	0	0
LEAD PHASES	0	6 T B R	0	0	0	0	0	0	0	0
DBL ENTRY	0	7 T T R	0	0	0	0	0	0	0	0
SEQUENTIAL	0	8 OBSERVE GAP								
STARTUP GRN	0	9 PASSAGE	0.0	0.0	0.0	0.0	0.0	0.0	0.0	0.0
OVERLAP A	0	A MIN GAP	0.0	0.0	0.0	0.0	0.0	0.0	0.0	0.0
OVERLAP B	0	B ADDED/ACT	0.0	0.0	0.0	0.0	0.0	0.0	0.0	0.0
OVERLAP C	0	C YELLOW	0.0	3.5	0.0	3.5	0.0	3.5	0.0	0.0
OVERLAP D	0	D RED CLEAR	0.0	1.5	0.0	1.5	0.0	1.5	0.0	0.0
EXCLUSIVE	0	E RED REVERT	0.0	0.0	0.0	0.0	0.0	0.0	0.0	0.0
SLM GAP	0	F WALK II								

SEE SHEET 37 FOR INSTALLATION OF POWER AND SPAN POLES.

TEMPORARY TRAFFIC SIGNAL PLAN
SENECA & MAPLE

SCALE:	APPROVED:	DRAWN BY:
DATE:	CHECKED:	SHEET NO.:
PROJECT NO.:		

ME MUNICIPAL ENGINEERS, P.A.
254-LAURA, SUITE 201, WICHITA, KANSAS 67211
316-282-3842 (TEL.)
316-282-8854 (FAX)