

BASE BID  
MIDDLE TWO COURTS CONSTRUCTION

- REMOVE EXISTING FENCE AS NEEDED TO FACILITATE RECONSTRUCTION OF EXISTING TENNIS COURTS. ALL FENCE REMOVED SHALL BE REPLACED TO A CONDITION EQUAL OR BETTER THAN THE FENCE PRIOR TO REMOVAL. ANY FENCE MATERIAL DAMAGED BY THE CONTRACTOR IN THE REMOVAL PROCESS SHALL BE REPLACED WITH NEW MATERIAL EQUAL IN QUALITY TO THE MATERIAL REPLACED. THIS COST IS SUBSIDIARY TO THE OTHER BID ITEMS.
- REMOVE THE ASPHALT MATERIAL IN THE AREA INSIDE OF THE CONCRETE FENCE FOOTING.
- REMOVE THE LIGHT POLE IN THE CENTER OF THE TWO TENNIS COURTS, AND TAKE IT TO CHAPIN LANDFILL AT 3900 SOUTH HYDRAULIC, WICHITA, KANSAS. CONTACT RON HAYWORTH AT 337-9229 FOR ADDITIONAL INFORMATION. THIS COST IS SUBSIDIARY TO THE OTHER BID ITEMS.
- EXCAVATE 8 3/4" FROM THE TOP OF THE CONCRETE CURB TO THE TOP OF THE SUB-GRADE, AND COMPACT THE SUB-GRADE TO 90% STANDARD DENSITY. THIS COST IS SUBSIDIARY TO THE OTHER BID ITEMS.
- PLACE 2" OF COMPACTED SAND. SAND SPECIFICATION IS THE SAME AS FINE AGGREGATE SPECIFICATION IN THE CITY OF WICHITA STANDARD CONCRETE PAVEMENT SPECIFICATION.
- PLACE VAPOR BARRIER ON SAND.
- PLACE 1,205 SQ FT OF 5" POST TENSION CONCRETE THREE FEET (3') INSIDE THE PERIMETER OF THE CONCRETE CURB.
- PLACE 145 SQ FT OF 5" REINFORCED CONCRETE IN THE AREA BETWEEN THE 5" POST TENSIONED CONCRETE AND PERIMETER CONCRETE CURB.
- AFTER MINIMUM OF 14 DAYS CURING PERIOD, PLACE 2" OF ASPHALTIC CONCRETE (SC-1).
- INSTALL NEW NET, NET POSTS AND CENTER TIE DOWN.
- COLOR THE COURT PER SPECIFICATIONS.



SCALE 1" = 20'

B.M. 116.40 "O" CHISELED ON TOP OF CURB; N.W. CORNER OF PARKING LOT; EAST OF TENNIS COURTS AND SOUTH OF SWIMMING POOL IN MCADAMS PARK.

ADD ALTERNATE # 1  
NORTH TWO COURTS REPAIR

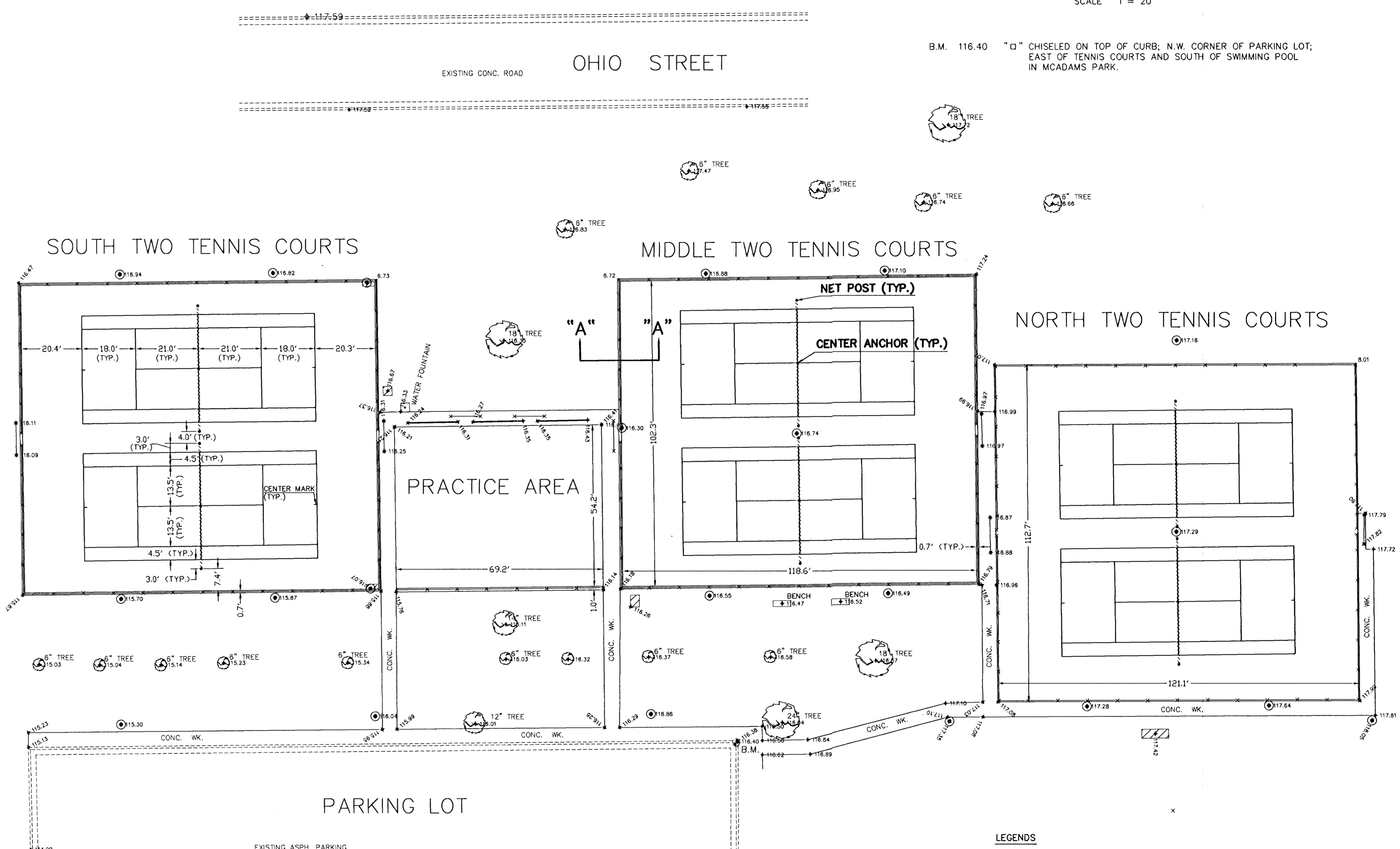
- REPAIR SPALLED AREAS (APPROXIMATELY 0.6% OF THE COURT AREA).
- REPAIR BLISTERS AND BUBBLES (APPROXIMATELY 0.4% OF THE COURT AREA).
- REPAIR EXPANSION JOINTS AND OPENINGS AROUND THE NET POSTS.
- RECOVER ENTIRELY THE COURTS WITH ONE COAT OF ACRYLIC TENNIS COURT PAINT.
- RE-STRIPE THE COURTS PER USTA SPECIFICATIONS.

ADD ALTERNATE # 2  
PRACTICE COURTS REPAIR

- REPAIR CRACKS (APPROXIMATELY 150').
- CLEAN OFF SURFACE OF THE COURT.
- RECOVER AREA WITH TWO (2) COATS OF ACRYLIC COLOR.

ADD ALTERNATE # 3  
SOUTH TWO COURTS REPAIR

- REPAIR THE ALLIGATOR CRACKS (APPROXIMATELY 10 SQ FT).
- REPAIR THE POP-OUTS, CLAY BALLS, AND SILT DEPOSITS (APPROXIMATELY 0.1% OF THE COURTS AREA).



- LEGENDS**
- LIGHT POLE
  - CHAIN LINK FENCE
  - ▨ ELEC. BOX ON CONC. PAD
  - NET

MCADAMS TENNIS COURTS  
CONSTRUCTION PLANS  
INDEX # 785618  
SHEET 3 OF 4  
DRAWN BY: B.R. DESIGN BY: B.R.