

CITY OF WICHITA, KANSAS

MICHAEL E. LINDEBAK, P.E., CITY ENGINEER

STREET IMPROVEMENTS

- WILD ROSE** - FROM THE N.L. OF 29TH STREET NORTH TO THE N.L. OF LOT 68, BLOCK 3, AND THE N.L. LOT 104, BLOCK 4.
- WILD ROSE COURT** - FROM THE E.L. OF WILD ROSE TO AND INCLUDING CUL-DE-SAC SERVING LOTS 113 THROUGH 120, BLOCK 4.
- WILD ROSE COURT** - FROM THE E.L. OF WILD ROSE TO AND INCLUDING CUL-DE-SAC SERVING LOTS 104 THROUGH 112, BLOCK 4.
- SIDEWALK** - ALONG THE WEST SIDE WILD ROSE FROM 29TH STREET NORTH TO THE N.L. OF LOT 68, BLOCK 3.

INDEX OF SHEETS

1. TITLE SHEET
2. PLAT
- 3.-6. TYPICAL SECTIONS
7. WILD ROSE ENTRANCE DETAILS
- 8.-9. PAVING PLANS - WILD ROSE
- 10.-11. PAVING PLANS - WILD ROSE COURTS
12. VALLEY GUTTER DETAILS
13. MISCELLANEOUS PAVING DETAILS
14. SIGNING DETAILS
15. STD. TYPE 1A CURB INLET DETAILS
- 16.-17. SEDIMENT AND EROSION CONTROL STD. DETAILS
- 18.-23. CROSS SECTIONS

PROJECT SURVEY CONTROL

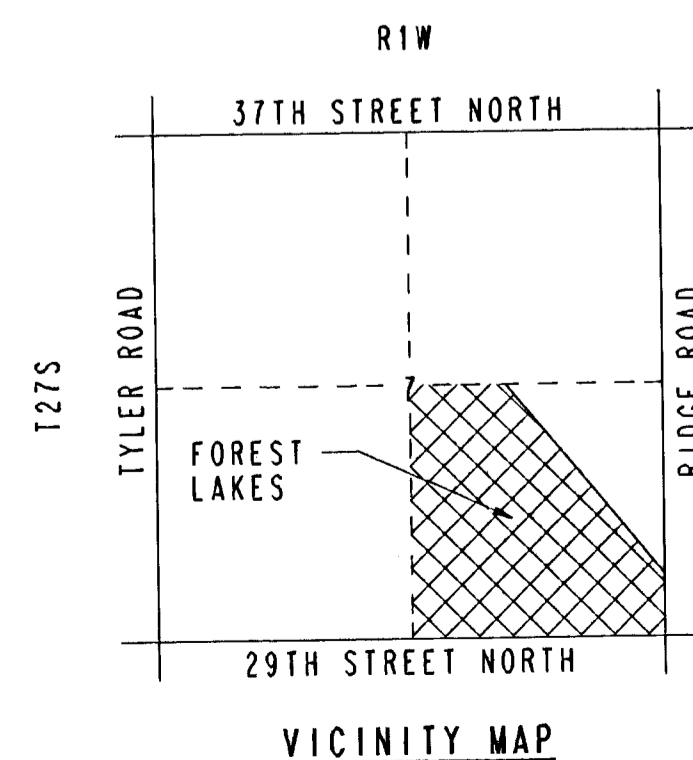
- BM #2 - CHISELED "0" ON NORTH END OF WEST HEADWALL OF RCB UNDER WILD ROSE ON SOUTH SIDE OF 29TH STREET NORTH. ELEV. 138.90
- BM #14 - RAILROAD SPIKE IN EAST FACE OF 36" COTTONWOOD IN NORTH-SOUTH TREE ROW, 35' NORTH AND 5' EAST OF THE SOUTHWEST CORNER OF LOT 70, BLOCK 3, FOREST LAKES ADDITION. ELEV. 139.76
- BM #15 - RAILROAD SPIKE IN NORTHWEST FACE OF 18" COTTONWOOD, 30' EAST OF THE NORTHWEST CORNER OF LOT 97, BLOCK 4, FOREST LAKES ADDITION. ELEV. 140.41
- BM #16 - "U" POST AT NORTHEAST CORNER OF LOT 108, BLOCK 4, FOREST LAKES ADDITION. ELEV. 139.39
- BM #17 - "U" POST AT SOUTHEAST CORNER OF LOT 93, BLOCK 4, FOREST LAKES ADDITION. ELEV. 140.30
- BM #18 - "U" POST 30' NORTHWEST OF THE SOUTHEAST CORNER OF LOT 88, BLOCK 4, FOREST LAKES ADDITION. ELEV. 139.73
- BM #19 - "U" POST AT EAST CORNER OF LOT 65, BLOCK 3, FOREST LAKES ADDITION. ELEV. 139.12

EARTHWORK

EXCAVATION 918+ CU. YDS.
 COMPACTED FILL 822+ CU. YDS.
 CONTRACTOR FURNISHED BORROW 1,235+ CU. YDS.

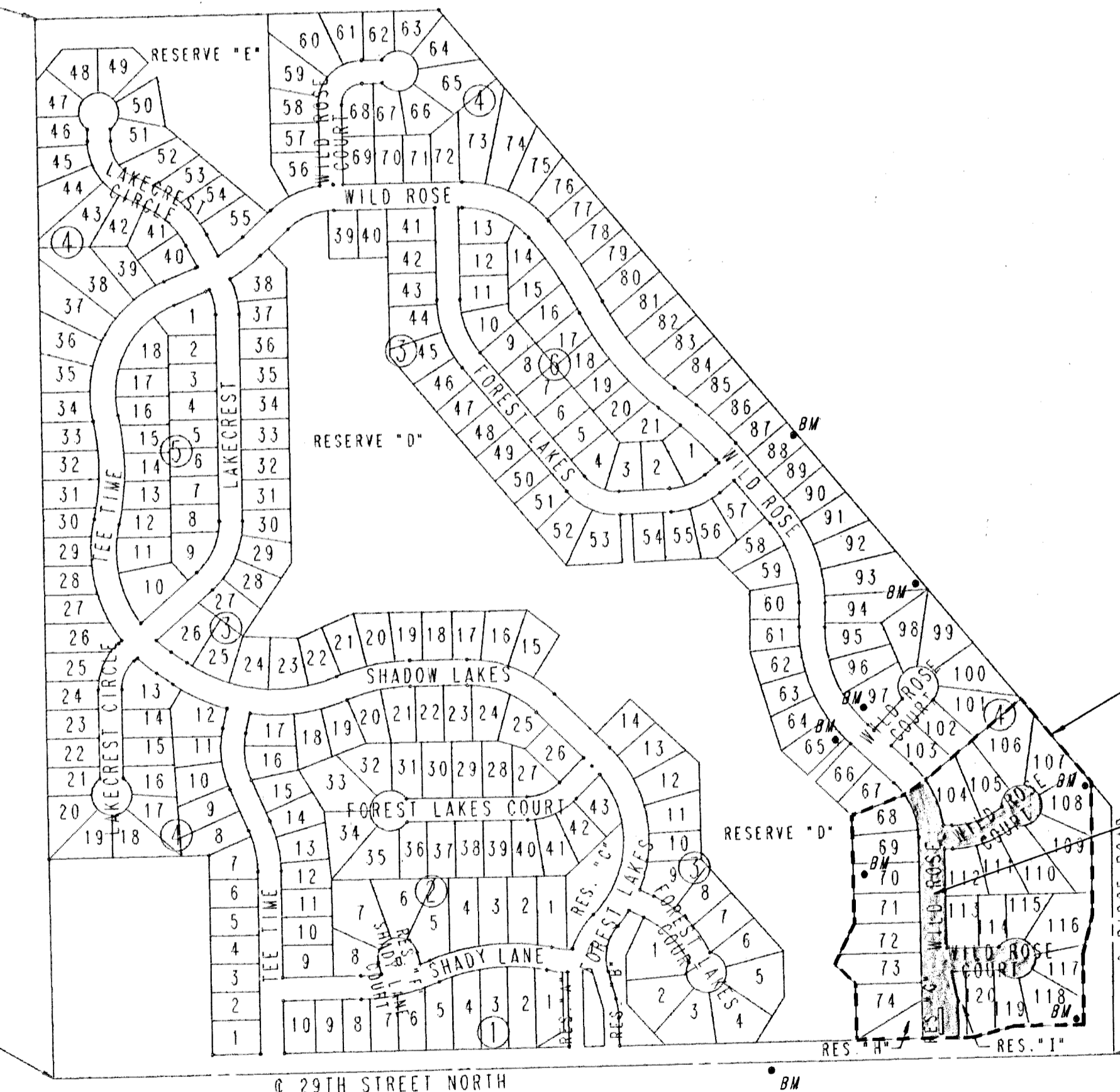
PROJECT LENGTH = 1,147.79 LIN. FT.

* THESE QUANTITIES COMPUTED USING BASE BID - ALTERNATE 1 CONFIGURATION.



IN FOREST LAKES PHASE NO. 7 CITY OF WICHITA PROJECT NO. 472-76-245-82323-000-000-001 INDEX NO. 762377

N.E. CORNER, S.E. 1/4
 SEC. 33, T26S, R1W
 OF THE 6TH P.M.



SCALE: 1" = 300'

IMPROVEMENT DISTRICT
BOUNDARY

STREET IMPROVEMENT

S.W. CORNER, S.E. 1/4
 SEC. 33, T26S, R1W
 OF THE 6TH P.M.

S.E. CORNER, S.E. 1/4
 SEC. 33, T26S, R1W
 OF THE 6TH P.M.

MARCH, 1994
 PLANS PREPARED BY
 PROFESSIONAL ENGINEERING CONSULTANTS, P.A.
 ENGINEERS
 WICHITA, KANSAS

GENERAL NOTES

UNDERGROUND UTILITY SERVICE LINES AND OVERHEAD UTILITY POLE LINES ARE TO BE ADJUSTED AS NECESSARY BY OTHERS PRIOR TO CONSTRUCTION UNLESS THE PLANS SPECIFICALLY CALL FOR THEIR ADJUSTMENT BY THE CONTRACTOR. EXISTING UTILITIES AND THEIR LOCATION, AS SHOWN ON THE PLANS, REPRESENT THE BEST INFORMATION OBTAINABLE FOR DESIGN. LOCATION INFORMATION HAS BEEN OBTAINED FROM THE VARIOUS UTILITY COMPANIES AND IS EITHER FROM COMPANY RECORD DRAWINGS OR COMPANY PROVIDED FIELD LOCATIONS. THE CONTRACTOR WILL BE REQUIRED TO WORK AROUND EXISTING UTILITIES WITHIN THE RIGHT-OF-WAY WHICH DO NOT CONFLICT WITH PROPOSED CONSTRUCTION.

TREES AND SHRUBS IN PUBLIC RIGHT-OF-WAY WHICH ARE IN DIRECT CONFLICT WITH PROPOSED NEW CONSTRUCTION SHALL BE REMOVED BY THE CONTRACTOR WITH THE ENGINEER'S APPROVAL. TREES AND SHRUBS WHICH ARE NOT IN DIRECT CONFLICT WITH PROPOSED NEW CONSTRUCTION SHALL BE SAVED AND PROTECTED FROM DAMAGE.

RUBBLE FROM THE REMOVAL OF MISCELLANEOUS STRUCTURES SHALL BE DISPOSED OF ON SITES TO BE PROVIDED BY THE CONTRACTOR AND APPROVED AS NOTED BELOW.

ALL DISPOSAL SITES MUST BE APPROVED BY THE KANSAS DEPARTMENT OF HEALTH AND ENVIRONMENT. MATERIAL EITHER STOCKPILED OR DISPOSED OF IN A FLOOD PLAIN WOULD REQUIRE A KANSAS STATE BOARD OF AGRICULTURE PERMIT. ANY MATERIAL DUMPED IN WATERS OF THE UNITED STATES OR WETLANDS IS SUBJECT TO U.S. CORPS OF ENGINEERS PERMITTING REGULATIONS. ANY MATERIAL BURIED OR STOCKPILED BEYOND APPROVED CONSTRUCTION LIMITS WOULD REQUIRE ADDITIONAL ARCHEOLOGICAL INVESTIGATIONS UNLESS BURIED IN A PREVIOUSLY APPROVED BORROW LOCATION.

CONTRACTOR SHALL SATISFY HIMSELF OF SUBSURFACE CONDITIONS PRIOR TO CONSTRUCTION.

TEMPORARY SURFACING MATERIAL (ROCK, ASPHALT, ETC.) MAY HAVE BEEN PLACED WITHIN STREET RIGHTS-OF-WAY FOR HAUL ROADS AND TEMPORARY ACCESS. CONTRACTOR SHALL FIELD VERIFY EXISTING CONDITIONS TO DETERMINE EXTENT, IF ANY, OF SUCH SURFACING. CONTRACTOR SHALL REMOVE SAID TEMPORARY SURFACING IN THE SAME MANNER AS NOTED ABOVE FOR RUBBLE. THIS REMOVAL SHALL BE SUBSIDIARY TO "EXCAVATION".

CONTRACTOR SHALL PROVIDE A MINIMUM FORTY-EIGHT (48) HOUR ADVANCE NOTICE (EXCLUDING WEEKENDS AND HOLIDAYS) PRIOR TO BEGINNING ANY EXCAVATION, TO KANSAS ONE-CALL SYSTEM, A UTILITY LOCATION SERVICE, AT (316) 887-2470 TO REQUEST THE FOLLOWING UTILITY COMPANIES TO LOCATE ALL EXISTING LINES WITHIN THE PROJECT AREA: ARKLA GAS, K.G.B.E. ELECTRIC, SOUTHWESTERN BELL TELEPHONE, MULTIMEDIA CABLEVISION, CITY OF WICHITA SEWER MAINTENANCE AND CITY OF WICHITA WATER DEPARTMENT.

THE CONTRACTOR SHALL BE RESPONSIBLE FOR PRESERVING PROPERTY IRONS. THE CONTRACTOR WILL BE REQUIRED TO RE-ESTABLISH ANY PROPERTY IRONS WHICH ARE DAMAGED OR DESTROYED BY HIS CONSTRUCTION OPERATIONS. SUCH IRONS SHALL BE RE-ESTABLISHED BY A LICENSED LAND SURVEYOR IN ACCORDANCE WITH STATE LAWS.

THE WATER DEPARTMENT SHALL FIELD LOCATE WATER VALVES ONE TIME DURING CONSTRUCTION WHEN REQUESTED BY THE CONTRACTOR. IT SHALL BE THE CONTRACTOR'S RESPONSIBILITY TO PRESERVE SUCH FIELD LOCATIONS DURING THE CONSTRUCTION PROCESS. WATER VALVES, WATER VALVE BOXES OR FIRE HYDRANTS DAMAGED DURING CONSTRUCTION SHALL BE REPAIRED BY THE CONTRACTOR AT HIS OWN EXPENSE.

THE CONTRACTOR SHALL ADJUST WATER VALVE BOXES AS DIRECTED BY THE ENGINEER. THIS WORK TO BE SUBSIDIARY TO OTHER BID ITEMS.

INLET HOOKUPS SHALL BE BID PER EACH REGARDLESS OF INLET SIZE.

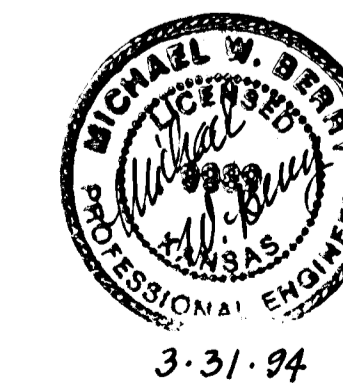
THIS PROJECT DOES NOT INCLUDE ANY PROVISIONS FOR CONSTRUCTION OF DRIVEWAYS.

TOPS OF ALL EXISTING SMS INLETS SHALL BE SET IN PLACE AS SHOWN ON THE SMS INLET DETAIL SHEET AND AT THE PROPER ELEVATION TO MATCH THE ADJACENT TOP OF CURB. PAYMENT FOR THIS WORK SHALL BE PER EACH AT THE UNIT PRICE BID FOR "INLET ADJUSTMENT", REGARDLESS OF INLET SIZE OR AMOUNT OF ADJUSTMENT REQUIRED.

THIS PROJECT INCLUDES ALTERNATE PAVEMENT TYPES. THE CONTRACTOR SHALL BID ALL ALTERNATE 1 AND ALTERNATE 2 BID ITEMS AND THE CITY ENGINEER SHALL THEN SPECIFY WHICH PAVEMENT TYPE IS TO BE USED FOR THIS PROJECT. THE ALTERNATE SELECTED BY THE CITY ENGINEER SHALL BE USED FOR THE ENTIRE PROJECT. CROSS SECTIONS AND EARTHWORK QUANTITIES CONTAINED HEREIN REFLECT ALTERNATE 1 CONFIGURATION. ANY DIFFERENCE IN EARTHWORK BETWEEN THE TWO ALTERNATES SHALL BE SUBSIDIARY TO "SUBGRADE MANIPULATION".

TWO-WAY TRAFFIC ON 29TH ST. N. TO BE MAINTAINED AT ALL TIMES. CONTRACTOR SHALL PROVIDE, ERECT AND MAINTAIN CONSTRUCTION TRAFFIC CONTROL DEVICES IN ACCORDANCE WITH THE MANUAL ON UNIFORM TRAFFIC CONTROL DEVICES (MUTCD) AND THE WICHITA BARRICADE MANUAL.

CONTRACTOR SHALL TEMPORARY SEED AND MULCH AREAS INDICATED AND AT THE RATES SHOWN ON SH. NO. 16.



DRAWING NAME: 32-91684 TITLE
 LOCATION: DALLAS
 CENTER COORDINATES:
 ROTATION ANGLE:
 DATE LAST WORKED ON:
 DWG LINE DOWN