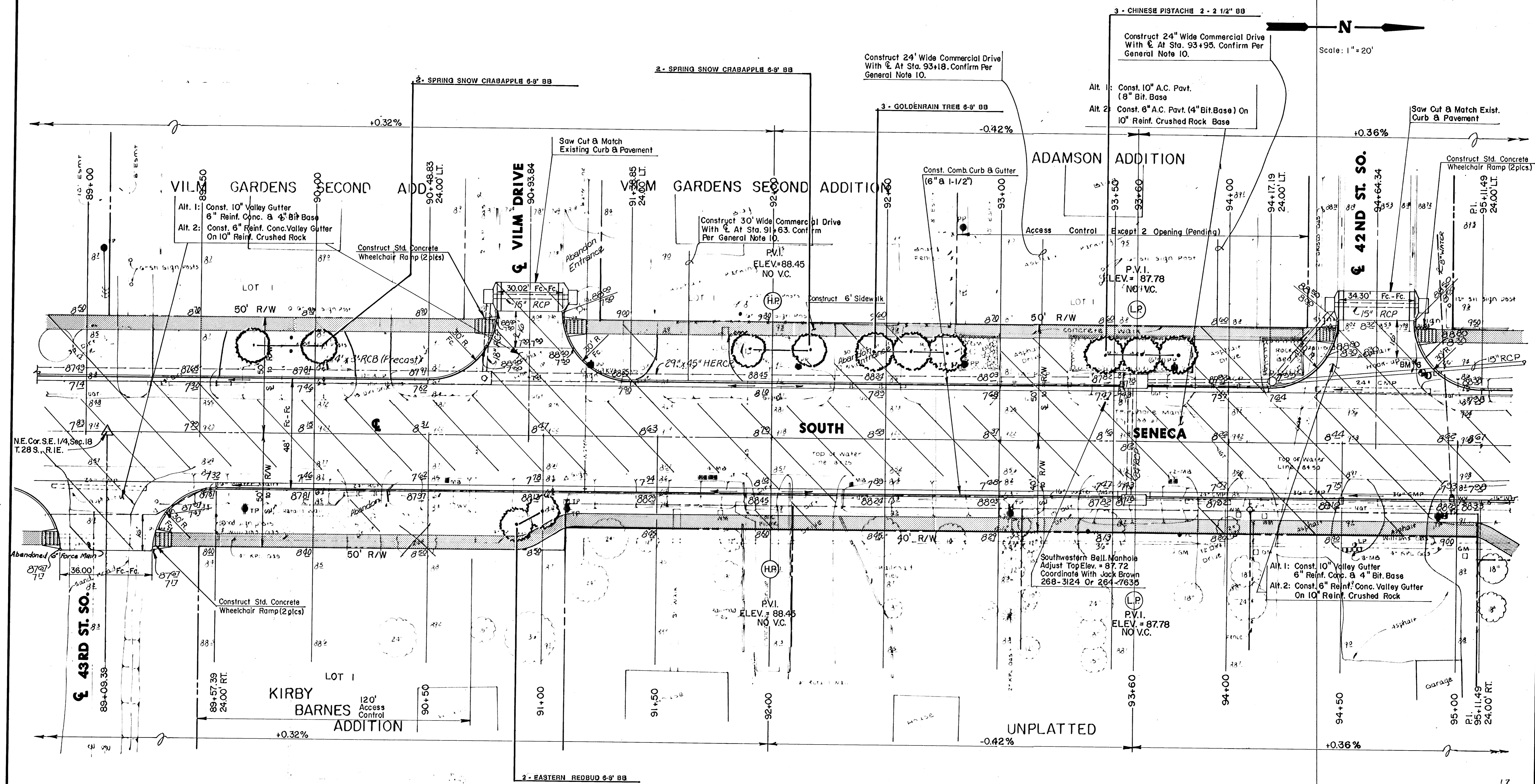



B.M. #6  
Near Sta. 94+85, 30' Left, Step Nail  
In Pole. Elev. = 89.83

Scale: 1" = 20'



**WATER VALVE BOX ADJUSTMENT**

STATION	OFFSET	EXIST. ELEV.	PROP. ELEV.	NOTES
91+18	23' Rt. ±	N.A.		Field Verify
91+15	55' Lt.	Relocated By Others		FH/WV
94+96	23' Rt.	87.92	87.84	



**SOUTH SENECA IMPROVEMENTS**

**LANDSCAPE PLAN**

48TH ST. SO. TO MACARTHUR RD.

Design

Drawn by

Checked by

Date DEC, 1992

Job no

MID-KANSAS ENGINEERING CONSULTANTS PA

3500 NORTH ROCK ROAD

BUILDING #800

WICHITA, KANSAS 67226

636-5666

Sheet

8

of 12