

GENERAL NOTES:

- The Contractor shall comply with all applicable safety regulations. All construction shall be completed following current City Standard Specifications and Special Provisions.
- Contractor will be required to provide notice to utility companies a minimum of seventy-two (72) hours prior to any excavation, as follows:

Kansas One-Call 687-2470

The Contractor must notify the following in case of an emergency:

NuStar Pipeline Co. 1-316-322-0325
 AT&T 1-800-246-8464
 Black Hills Energy 1-800-694-8989
 City of Wichita Water & Sewer 1-316-219-8921
 City of Wichita Stormwater 1-316-268-4090
 City of Wichita Traffic 1-316-268-4034
 Cox Communications 1-888-249-3530
 Kansas Gas Service 1-888-482-4950
 Evergy 1-800-544-4857

- Utility service lines, poles, etc. are to be adjusted as necessary by others prior to construction unless the plans specifically call for their adjustment by the Contractor or unless the plans specifically identify a utility to be adjusted by its owner during construction. Existing utilities and their location, as shown on the plans, represent the best information obtainable for design. The Contractor will be required to work around existing utilities within the right-of-way which do not conflict with proposed construction.
- Rubble from the removal of miscellaneous structures and excess excavation which is to be wasted shall be disposed of on sites to be provided by the Contractor. These sites shall be approved by the Engineer as to suitability, appearance and site location. Locations, in the opinion of the Engineer, that will leave an unsightly appearance will not be approved. All disposal sites must be approved by the Kansas Department of Health and Environment. Material either stockpiled or disposed of in a flood plain will require a Kansas State Board of Agriculture permit. Any material dumped in waters of the United States or wetlands is subject to U.S. Corps of Engineers permitting regulations. Any material buried or stockpiled beyond approved construction limits will require additional archaeological investigations unless buried in a previously approved borrow location.
- Trees and shrubs in public right-of-way which are in direct conflict with proposed new construction shall be removed by the Contractor with the City Engineer's approval. Trees and shrubs which are not in direct conflict with proposed new construction shall be saved and protected from damage.
- The Contractor shall give all property owners and/or tenants of developed property abutting the construction of this project a minimum of ten (10) days notice prior to start of construction.
- The Contractor shall be responsible for preserving property irons. The Contractor will be required to re-establish any property irons which are damaged or destroyed by his construction operations. Such irons shall be re-established by a licensed land surveyor in accordance with state laws.
- All elevations shown are NAVD88.
- Contractor shall limit the extent of trench openings overnight and weekends to less than 50 feet.
- The Contractor shall protect from damage and support existing utilities through construction as approved by the utility owner and the Engineer at the contractor's expense.
- All existing and proposed erosion control measures including silt fencing, erosion control mat, straw bales, inlet barriers, and const. entrance shall be maintained throughout construction by the contractor and until project is accepted by the City of Wichita. The on-site engineer shall complete weekly reports on the status of erosion control measures. The contractor shall be required to comply with maintenance and/or replacement of erosion control measures as determined by the on-site engineer until project is accepted by City of Wichita. Maintenance and/or replacement of erosion control measures to be paid by L.S. bid item "Maintain Existing BMPs".
- All excess excavation shall remain on-site and shall be stockpiled or spread at a location determined by the engineer.

- All of 21st St. R/W disturbed during construction and Res. "E", "F", "I" above the water surface shall be seeded and mulched as follows:

Seed -- Kansas Premium Fescue Blend; 8 lbs. PLS/1000 Sq. Ft.
 Annual Rye grass; 3 lbs./1000 Sq. Ft.
 Fertilizer -- 12-24-12 Ratio; 45 Lbs./Ac.
 Mulch -- 2 Tons Prairie Hay/Ac.

All other areas disturbed during construction are to be seeded as follows:

Seed -- Rye grass; 5 lbs./1000 Sq. Ft.

All costs associated with seeding including mobilization, preparation of ground, seeding, fertilizing, mulching, etc. shall be included in the L.S. bid item "Seeding".

An additional bid item for "Seeding, Temporary" has been included and may be used at the discretion of the design engineer. Temporary seed shall be Annual Rye at 5 lbs./1000 Sq. Ft. unless otherwise noted and shall be planted when permanent seed or sod cannot be used due to seasonal limitations. If the "Seeding, Temporary" bid item is not used, 100% of the pay item will be deducted from the contract. All costs associated with temporary seeding including mobilization, preparation of ground, seeding, etc., shall be included in the L.S. bid item "Seeding, Temporary".

- At conclusion of construction, an as-built survey will be completed by the engineer. The contractor will be required to finish and smooth grade all locations as necessary that are not within ±0.1' of street r/w plan grade or within ±0.3' of plan grade outside of street r/w. The contractor shall include all costs associated with the regrading and/or remediation in the bid item "Grading, Mass"
- The developer for this project is 21 Management, LLC, Nicholas A. Cowgill, Manager. (316)684-0161 Nick.cowgill@neshomes.com
- Construction shall be coordinated between the storm drain, sanitary sewer, and water improvements (both phase 1 and entrance water projects).

Benchmarks

BM #1: Chiseled square on NW corner of catch basin, 262.2' W. & 35.9' N. of S1/4 Cor., Sec. 1, TWP. 27-S., R-2-E.
 Elev. = 1361.76 NAVD88

BM #2: Chiseled square on NW corner of catch basin, 962.0' W. & 35.8' N. of S1/4 Cor., Sec. 1, TWP. 27-S., R-2-E.
 Elev. = 1363.84 NAVD88

BM #3: Chiseled square on NW corner of catch basin, 160.0' E. & 24.3' S. of SW Cor., Lot 13, Block A, NRD Addition.
 Elev. = 1369.05 NAVD88

STORM DRAIN #470 & SWS IMPROVEMENTS

to serve

NRD ADDITION

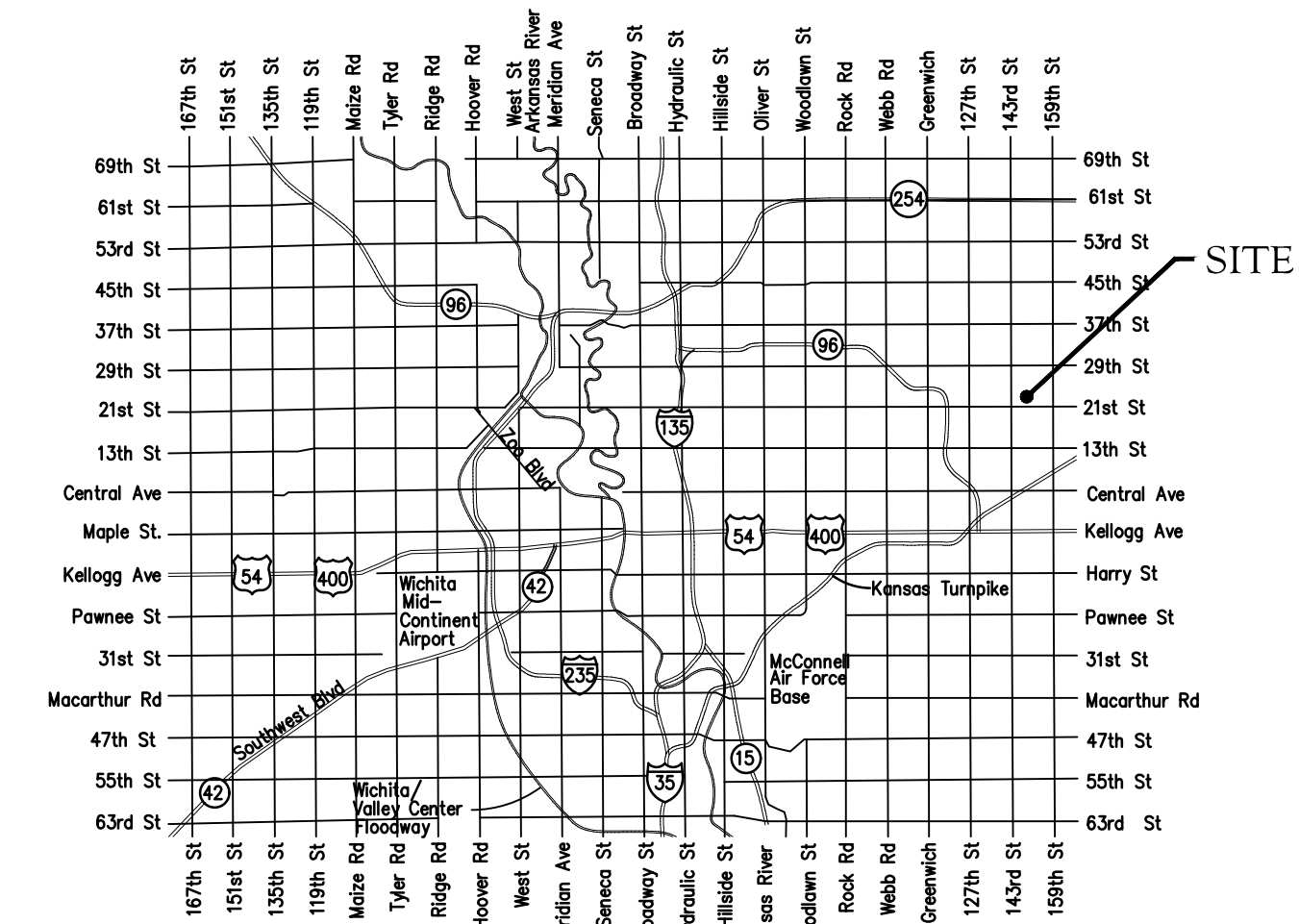
CITY OF WICHITA, KANSAS

Gary Janzen, P.E. City Engineer

Project Number 468-2020-085447

Org Code 47307920

Munis Number E0018



Vicinity Map

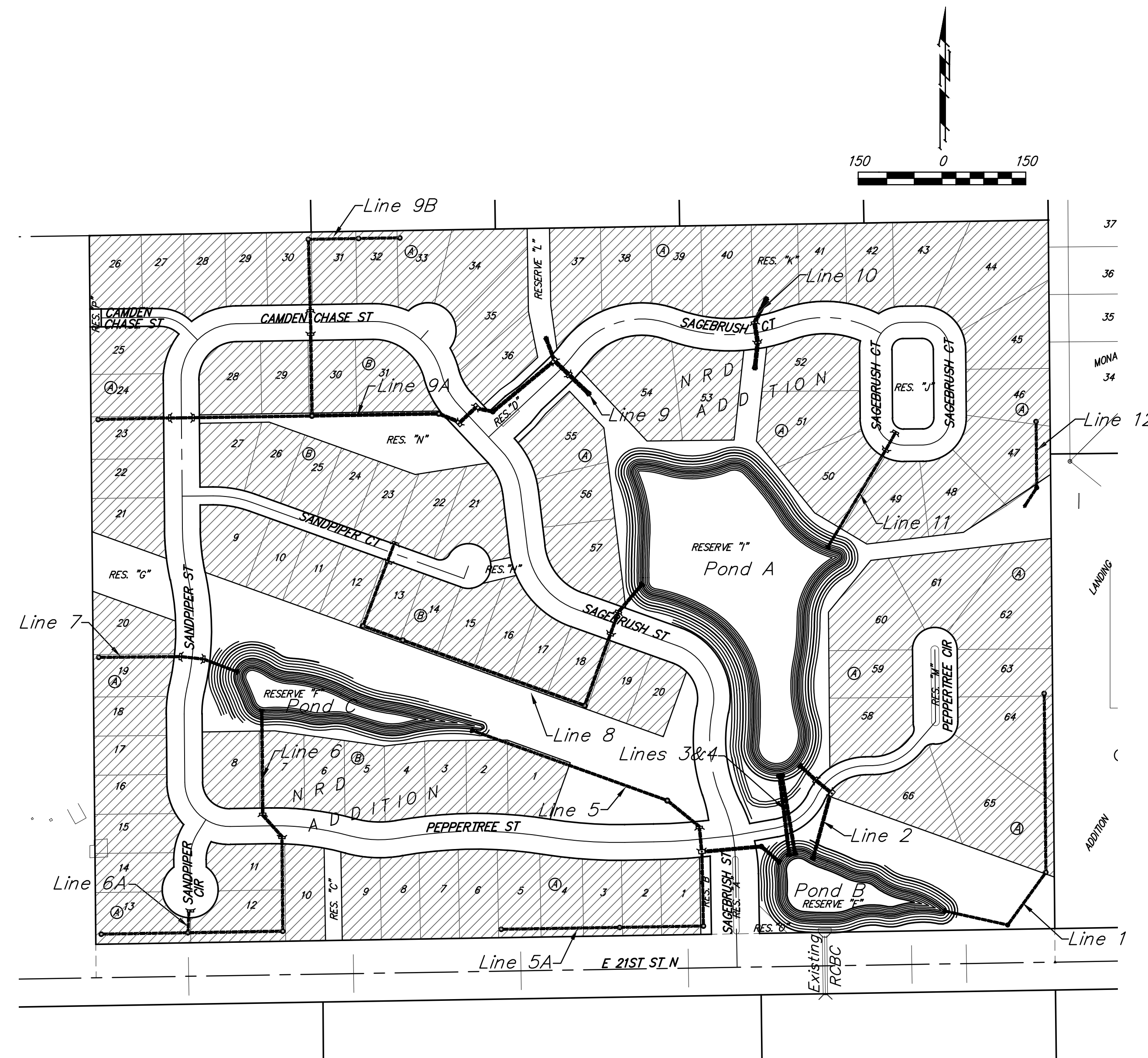
Stormwater Certification:
 New Development or Redevelopment (Circle One)
 Stormwater Permit # _____
 NOI Permit # S-LA20-0074 KSR 116412

These construction plans were prepared in accordance with the current Stormwater management Regulations as set forth in the City of Wichita's Stormwater Management Ordinance 16.32 and the policies/guidelines presented in the Wichita/Sedgwick County Stormwater Manual.

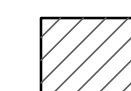
Site Area (Acres) = 50.1 Ac.
 Disturbed Area (Acres) = 50.1 Ac.
 Water Quality Treatment: Proposed lined ponds
 Downstream Channel Protection: Notched headwall
 Detention: Proposed lined ponds
 The BMP used for this development is Construction entrance, silt fence, curb inlet protection & drop inlet protection.

Sheet Index

Title Sheet	1
Line 1	2-3
Lines 2, 3 & 4	4
Line 5	5-6
Line 5A	7
Line 6	8-9
Line 6A	9
Line 7	10
Line 8	11-13
Line 9	14
Line 9A	15-16
Line 9B	17
Line 10	18
Lines 11 & 12	19
RCBC Modification	20
Mass Grading Plan	21-24
Pond Plan A	25
Pond Plans B & C	26
Type 1A Inlet L=5' and 10' Detail	27
Backyard Inlet Detail	28
Inlet-Manhole Detail	29
Precast Concrete Manhole Detail	30
MH-Inlet Frame & Cover Detail	31
Miscellaneous Detail	32
Headwall 15,18-24 Detail	33
Headwall 30-36 Detail	34
Mass Grading Detail	35
Erosion Control BMP Details	36-40
Coordinate Sheet	41-45
Copy of Plat	46



Benefit District



BAUGHMAN COMPANY
 315 Ellis St. Wichita, KS 67211 316-262-7271
 BaughmanCo.com

August 5, 2021