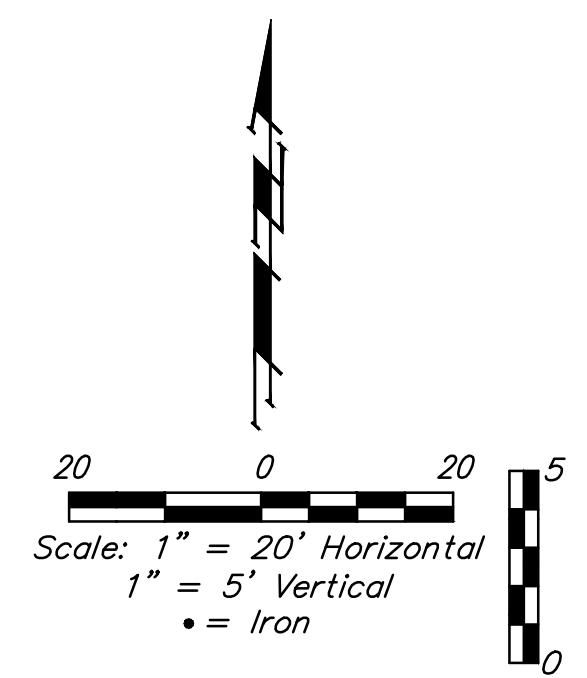
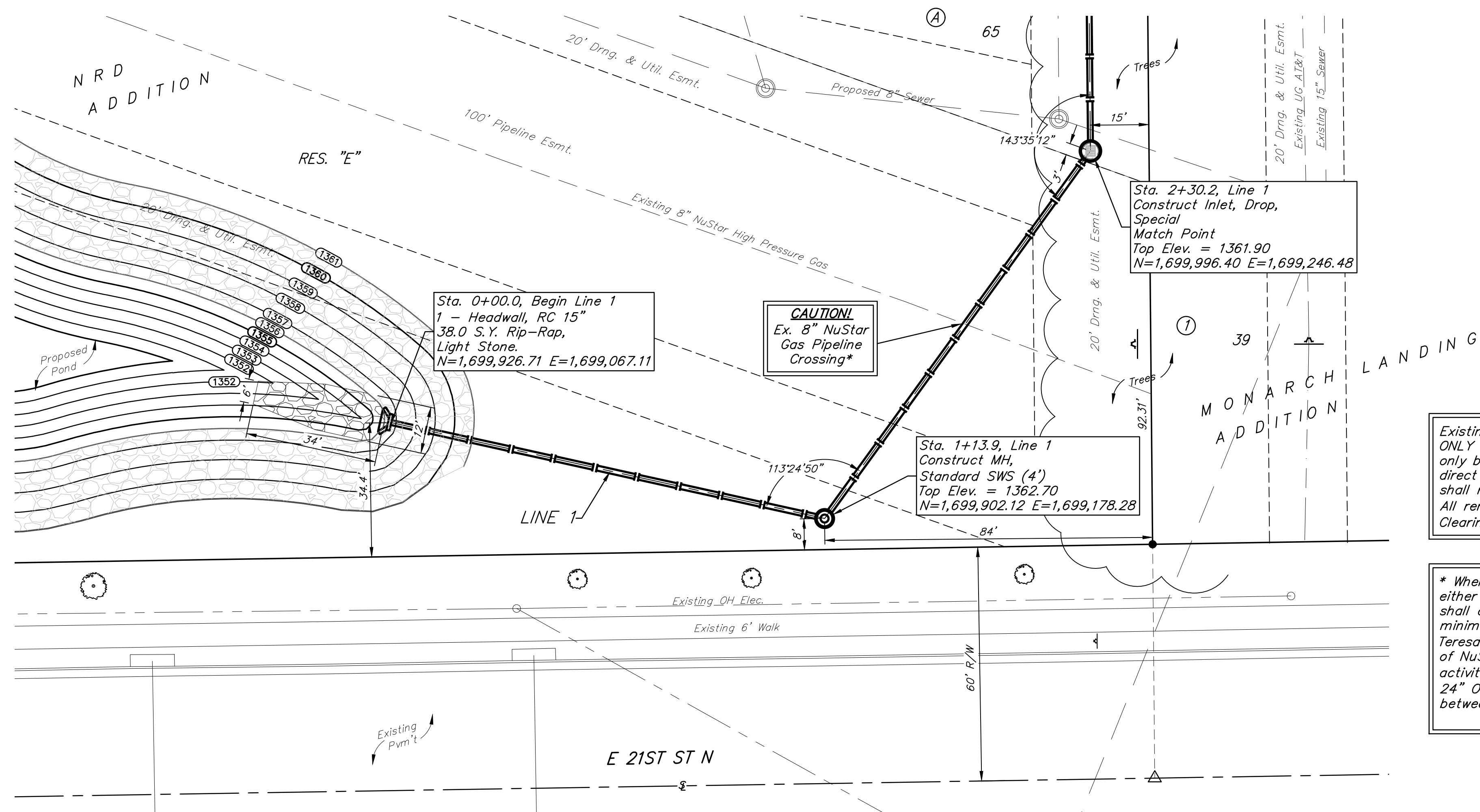


**BENCHMARKS:**  
 BM #1: Chiseled square on NW corner of catch basin, 262.2' W. & 35.9' N. of S1/4 Cor., Sec. 1, TWP. 27-S, R-2-E.  
 Elev. = 1361.76 NAVD88

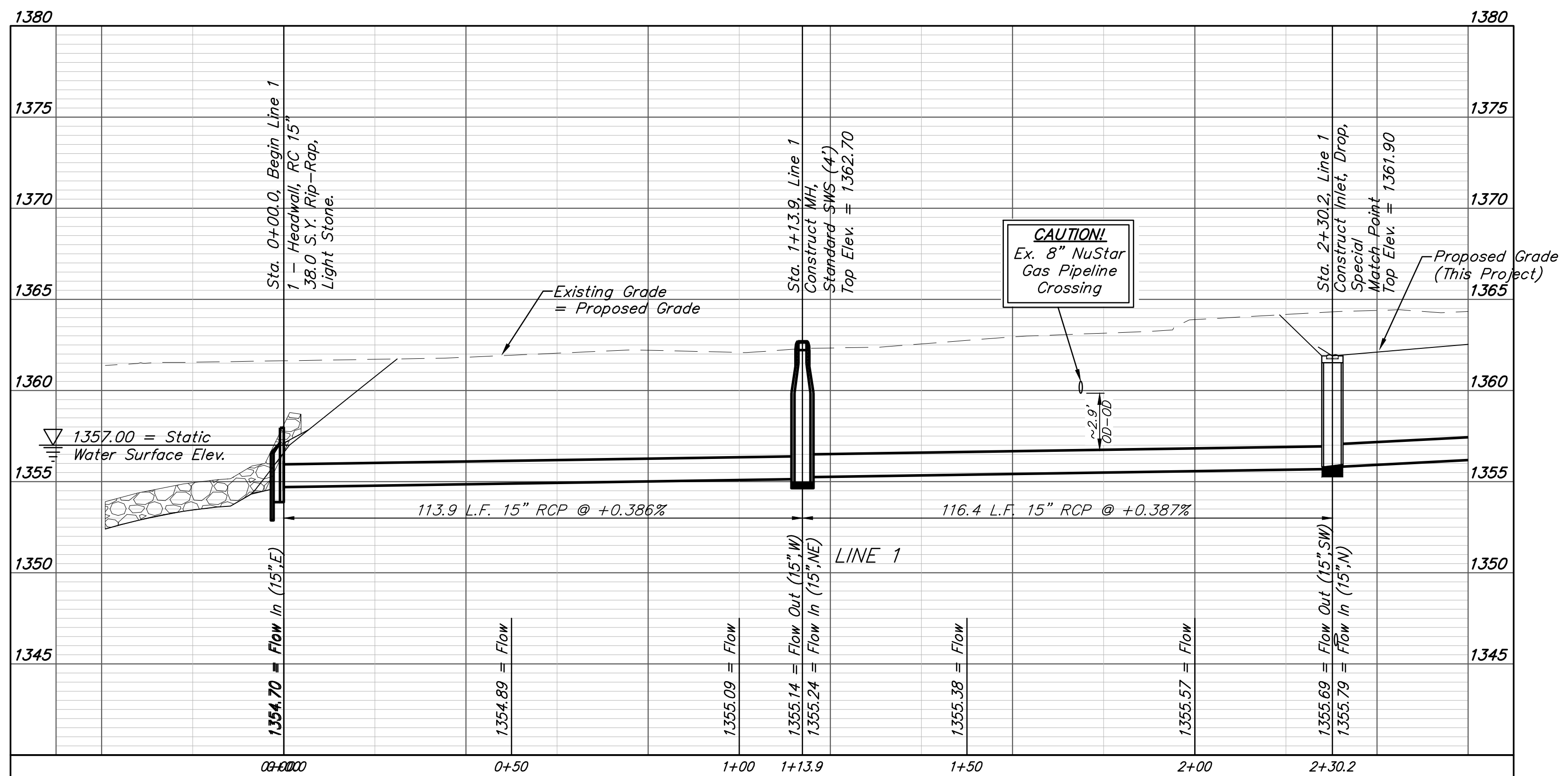
BM #2: Chiseled square on NW corner of catch basin, 962.0' W. & 35.8' N. of S1/4 Cor., Sec. 1, TWP. 27-S, R-2-E.  
 Elev. = 1363.84 NAVD88

BM #3: Chiseled square on NW corner of catch basin, 160.0' E. & 24.3' S. of SW Cor., Lot 13, Block A, NRD Addition.  
 Elev. = 1369.05 NAVD88



Existing trees shall be trimmed/removed ONLY with approval of Developer. Trimming will only be permitted with chainsaws. Trees not in direct conflict with proposed new construction shall remain and be protected from damage. All removal/trimming shall be included in "Site Clearing".

\* When construction will occur within 50' of either side of NuStar gas pipeline, Contractor shall contact Kansas One-Call and NuStar a minimum of 72 hours prior to construction. Teresa Landry (316)322-0325. A representative of NuStar must be present for any construction activities within 50' of pipeline. A minimum of 24" O.D.-O.D. vertical separation is required between gas pipeline and proposed utilities.





**BAUGHMAN COMPANY**

315 Ellis St.  
 Wichita, KS 67211  
 316-262-7271  
 BaughmanCo.com

NRD ADDITION

**LINE 1**

STORM WATER DRAIN IMPROVEMENTS

PROJECT NUMBER:  
 21-03-E867

DESIGN: NBW DRAWN: TMS  
 DATE: August 5, 2021

SHEET OF  
**2 46**

File: E:\Projects\NRD Addition\_19-04-P448\Engineering\Phase 1\SWD 21-03-E867\SWD.dwg