

PAVING & INCIDENTAL DRAINAGE PLANS FOR
NORTHEAST BASEBALL/SOCCER COMPLEX
 PHASE III

THE CITY OF WICHITA
 SEDGWICK COUNTY, KANSAS

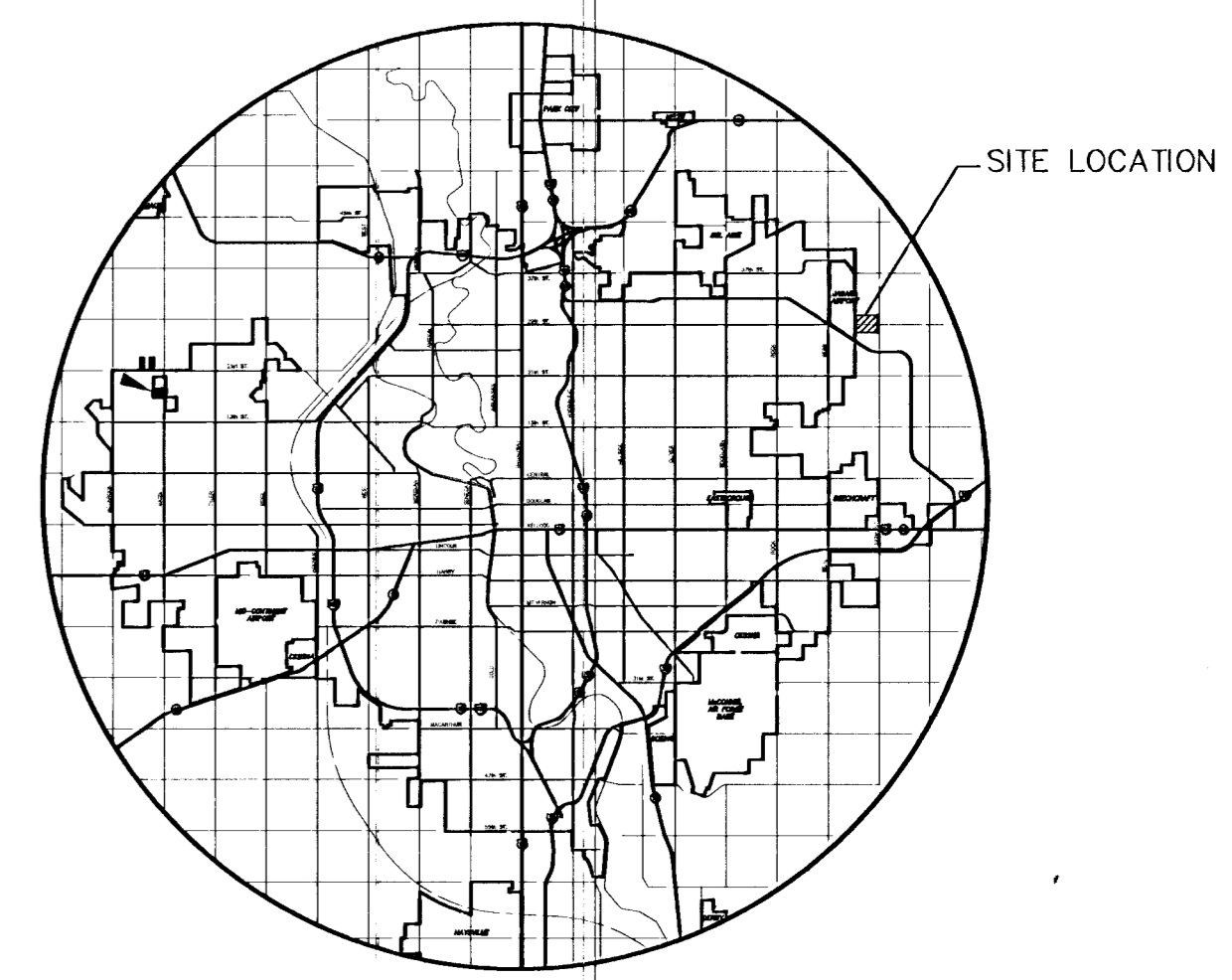
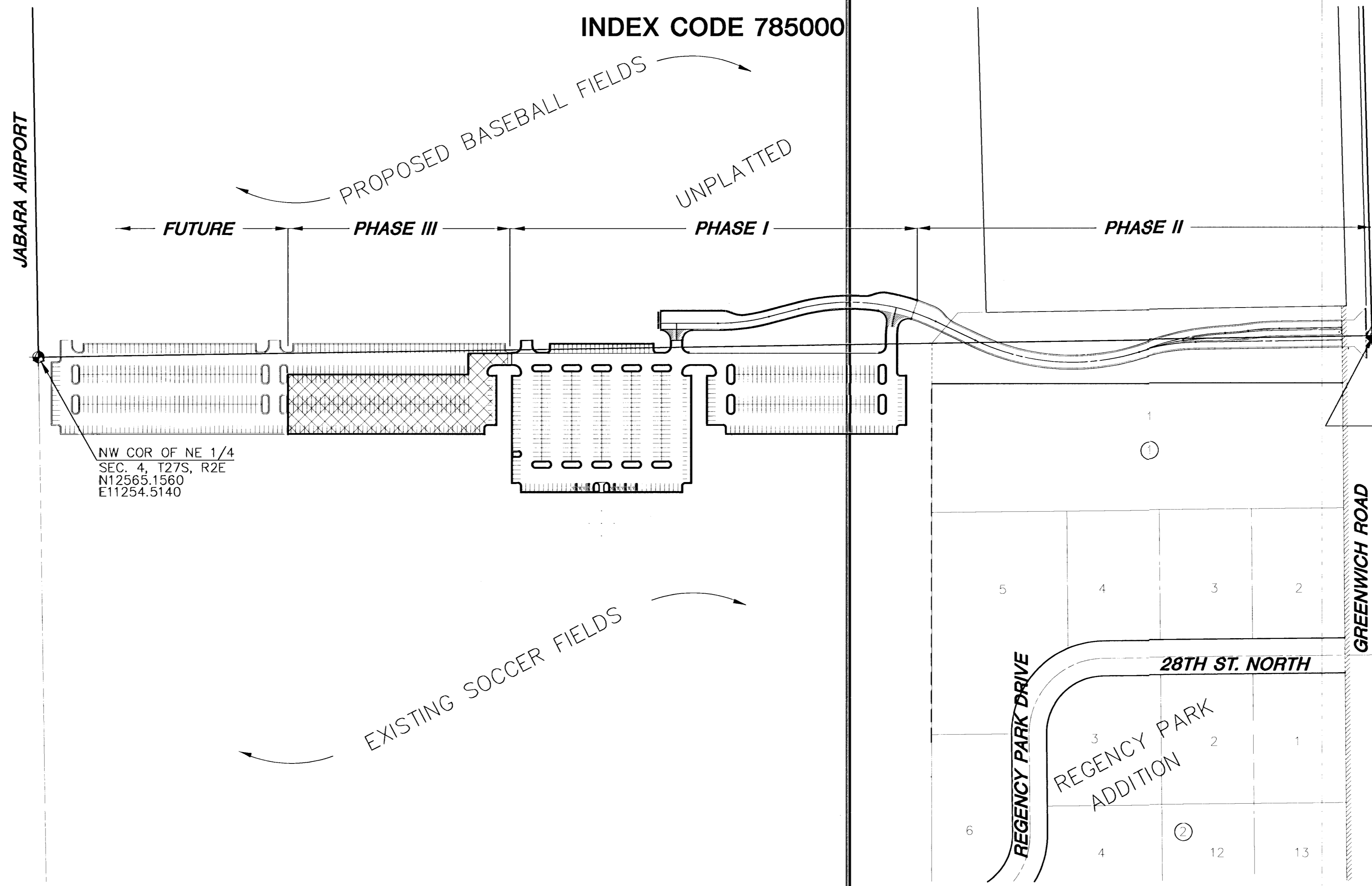
PROJECT NO. 472-83139

MICHAEL E. LINDEBAK, CITY ENGINEER

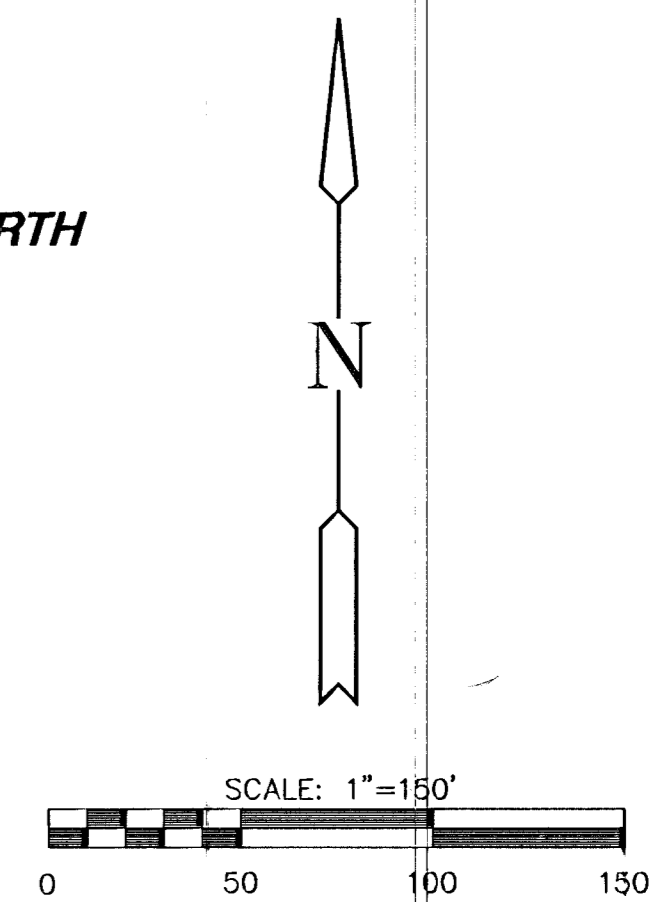
INDEX CODE 785000

GENERAL NOTES

- UNLESS SHOWN OR STATED OTHERWISE ON THESE DRAWINGS, MATERIALS AND CONSTRUCTION SHALL BE IN ACCORDANCE WITH CITY OF WICHITA CONCRETE PAVEMENT AND ASPHALTIC CONCRETE PAVEMENT SPECIFICATIONS.
- THE CONTRACTOR SHALL BE RESPONSIBLE FOR PRESERVING PROPERTY IRONS. THE CONTRACTOR WILL BE REQUIRED TO RE-ESTABLISH ANY PROPERTY IRONS WHICH ARE DAMAGED OR DESTROYED BY HIS CONSTRUCTION OPERATIONS. SUCH IRONS SHALL BE RE-ESTABLISHED BY A LICENSED LAND SURVEYOR IN ACCORDANCE WITH STATE LAWS.
- EXISTING UTILITIES AND THEIR LOCATIONS, AS SHOWN ON THE PLANS REPRESENT THE BEST INFORMATION OBTAINABLE FOR DESIGN. LOCATION INFORMATION HAS BEEN OBTAINED FROM THE VARIOUS UTILITY COMPANIES AND IS EITHER FROM COMPANY RECORD DRAWINGS OR COMPANY PROVIDED FIELD LOCATIONS. THE PLAN LOCATIONS SHOWN ARE NOT GUARANTEED. ADDITIONAL EXISTING UTILITIES MAY ALSO BE ENCOUNTERED.
- CONTRACTOR WILL BE REQUIRED TO PROVIDE A MINIMUM ADVANCE NOTICE OF FORTY-EIGHT (48) HOURS TO UTILITY COMPANIES PRIOR TO STARTING ANY EXCAVATION AS FOLLOWS:
 KANSAS ONE-CALL 1-800-344-7233
 OR 687-2470 (LOCAL WICHITA)
 THE CONTRACTOR MUST NOTIFY THE FOLLOWING IN CASE OF AN EMERGENCY:
 SOUTHWESTERN BELL TELEPHONE COMPANY 1-800-734-7590
 CABLEVISION 263-2061
 KG&E (GAS & ELECTRIC) 383-8600
 CITY OF WICHITA WATER & SEWER MAINT. 262-6000
 ARKLA GAS COMPANY 942-8350 OR 263-8161
- RUBBLE FROM THE REMOVAL OF MISCELLANEOUS STRUCTURES AND EXCESS EXCAVATION WHICH IS TO BE WASTED SHALL BE DISPOSED OF ON SITES TO BE PROVIDED BY THE CONTRACTOR. THESE SITES SHALL BE APPROVED BY THE ENGINEER AS TO SUITABILITY, APPEARANCE AND SITE LOCATION. LOCATIONS THAT, IN THE OPINION OF THE ENGINEER, WILL LEAVE AN UNSIGHTLY APPEARANCE WILL NOT BE APPROVED. ALL DISPOSAL SITES MUST BE APPROVED BY THE KANSAS DEPARTMENT OF HEALTH AND ENVIRONMENT. MATERIAL EITHER STOCKPILED OR DISPOSED OF IN A FLOOD PLAIN WOULD REQUIRE A KANSAS STATE BOARD OF AGRICULTURE PERMIT. ANY MATERIAL DUMPED IN WATERS OF THE UNITED STATES OR WETLANDS IS SUBJECT TO U.S. CORPS OF ENGINEERS PERMITTING REGULATIONS. ANY MATERIAL BURIED OR STOCKPILED BEYOND APPROVED CONSTRUCTION LIMITS WOULD REQUIRE ADDITIONAL ARCHAEOLOGICAL INVESTIGATIONS UNLESS BURIED IN A PREVIOUSLY APPROVED BORROW LOCATION.
- CONTRACTOR SHALL RESEED AND MULCH ALL DISTURBED AREAS. COST SHALL BE CONSIDERED SUBSIDIARY TO SITE RESTORATION.
- CONTRACTOR SHALL PROVIDE TEMPORARY SEDIMENT CONTROL AT ALL INLETS. SUCH CONTROL SHALL BE MAINTAINED UNTIL AND UPON GERMINATION OF SEEDING. ACCEPTABLE MEANS OF CONTROL SHALL BE APPROVED BY ENGINEER. COST SHALL BE CONSIDERED SUBSIDIARY TO SITE PREPARATION & RESTORATION.
- OTHER CONSTRUCTION ACTIVITIES MAY BE UNDER WAY SIMULTANEOUSLY WITH THIS PROJECT. CONTRACTOR SHALL COORDINATE WITH OTHER CONSTRUCTION PHASES AND/OR PROJECT.
- CONTRACTOR TO MAKE NECESSARY PROVISIONS TO ALLOW ACCESS TO THE SOCCER FIELDS BY MAINTENANCE AND CONSTRUCTION VEHICLES AT ALL TIMES.

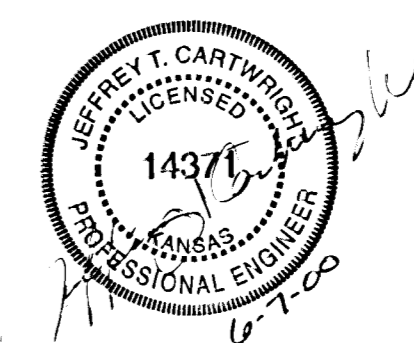


LOCATION MAP



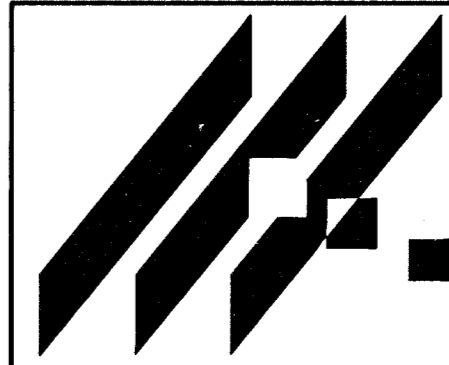
INDEX TO DRAWINGS

SHEET NO.	DESCRIPTION
1	TITLE SHEET
2	PAVING DETAILS
3	GRADING PLAN
4	PAVING PLAN
5	INLET DETAILS
6	MANHOLE DETAILS
7	POLEBASE DETAILS



BENCHMARKS

- BM #1 STEPPED SPIKE IN WEST SIDE PP 27' N & 48' E OF NE COR. SEC. 4, T27S, R2E (29TH ST. NORTH & GREENWICH ROAD) ELEV.= 201.51
- BM #2 STEPPED SPIKE IN WEST SIDE OF 6TH PP N OF K-96 ON E SIDE GREENWICH RD, 1808' S AND 48' E OF NE COR. SEC. 4, T27S, R2E ELEV.= 192.04



MID-KANSAS ENGINEERING CONSULTANTS, INC.
 411 N. WEBB ROAD
 WICHITA, KS. 67206
 316-684-9600

NORTHEAST BASEBALL/SOCCER COMPLEX
 PROJECT NAME
PAVING & INCIDENTAL DRAINAGE PLANS - PHASE III
 SHEET TITLE

GJA DESIGN BY. DAC DRAWN BY. GJA CHECKED BY.
 AUGUST 1999 DATE 98026 JOB NO. 1 / 6 SHEET OF