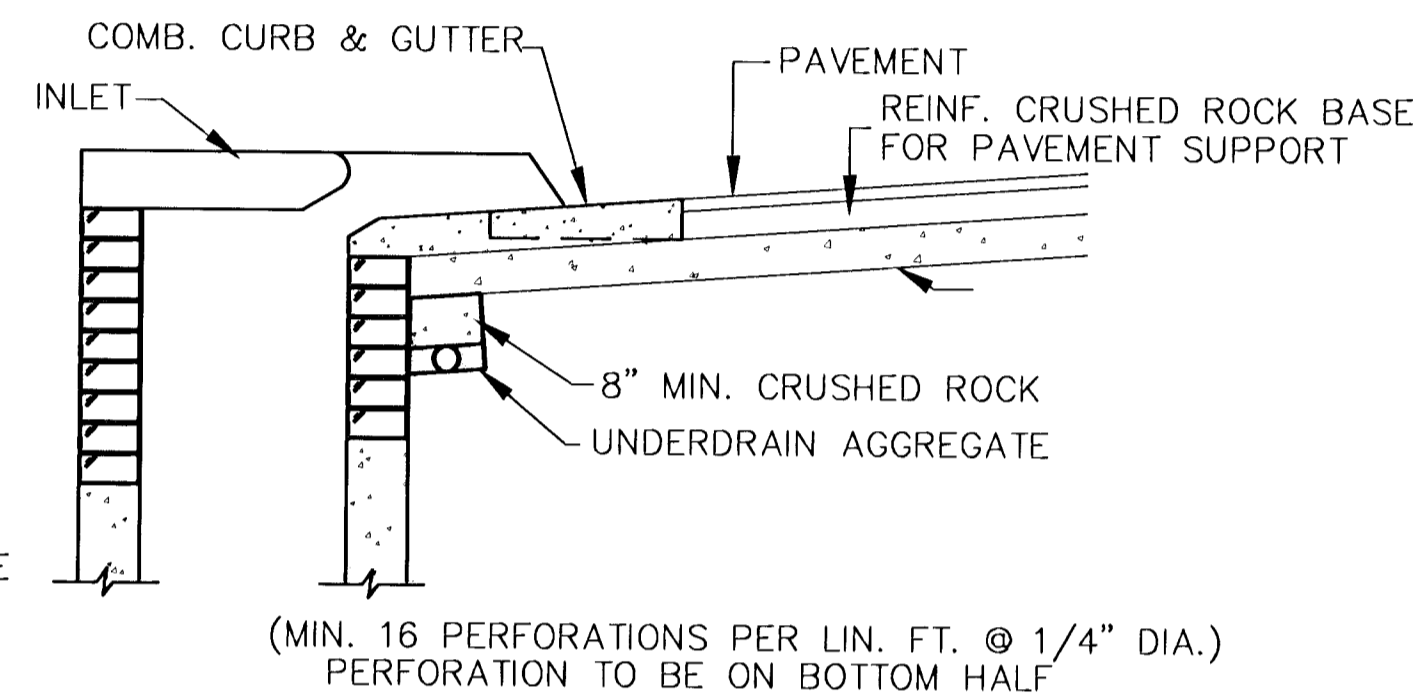


PLAN

* UNDERDRAIN AGGREGATE
PERCENT OF AGGREGATE RETAINED

1"	0
3/4"	0 to 10
3/8"	45 to 80
#4	90 to 100
#8	95 to 100

ROCK QUALITY SHALL CONFORM TO THE REQUIREMENTS SPECIFIED BY K.D.O.T. 1990 EDITION STANDARD SPECIFICATION SUBSECTION 1102 FOR DURABILITY CLASS 1.

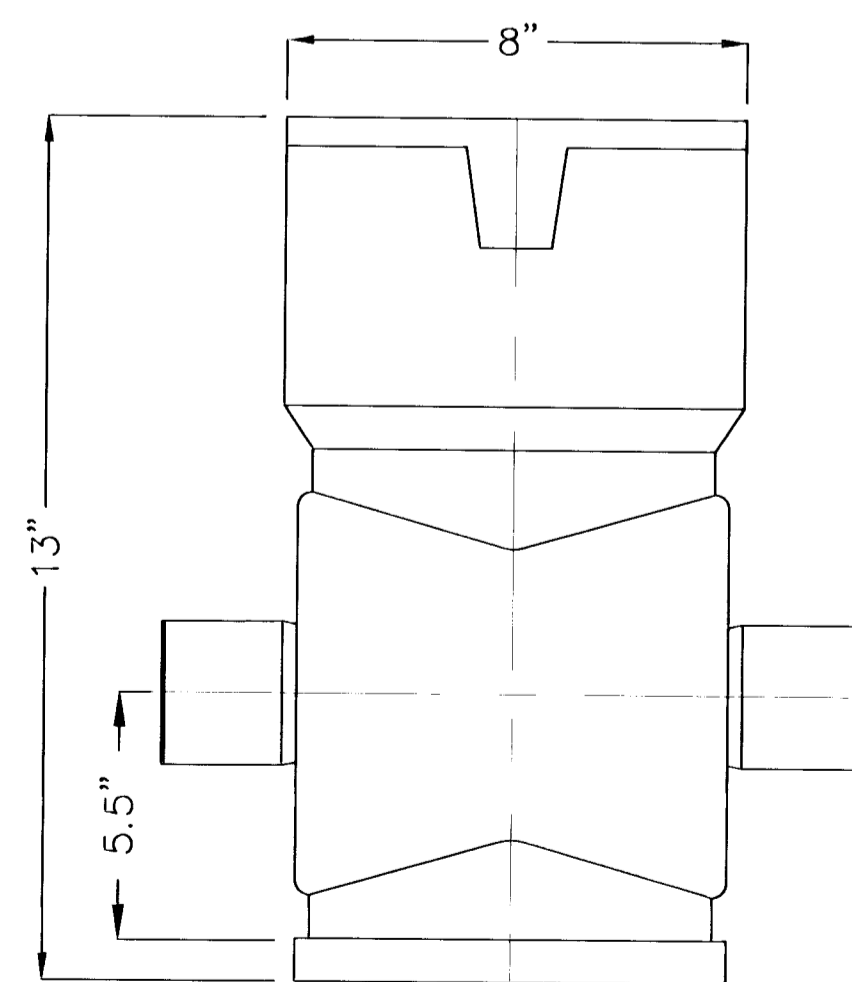


SECTION A-A

NOTE: PLACE 4" PVC PERFORATED PIPE AT ALL DRAINAGE SUMP LOCATIONS. COST OF UNDERDRAIN SYSTEM TO BE INCIDENTAL TO THE REINFORCED CRUSHED ROCK SUBGRADE. INLET TYPE MAY VARY FROM THAT SHOWN.

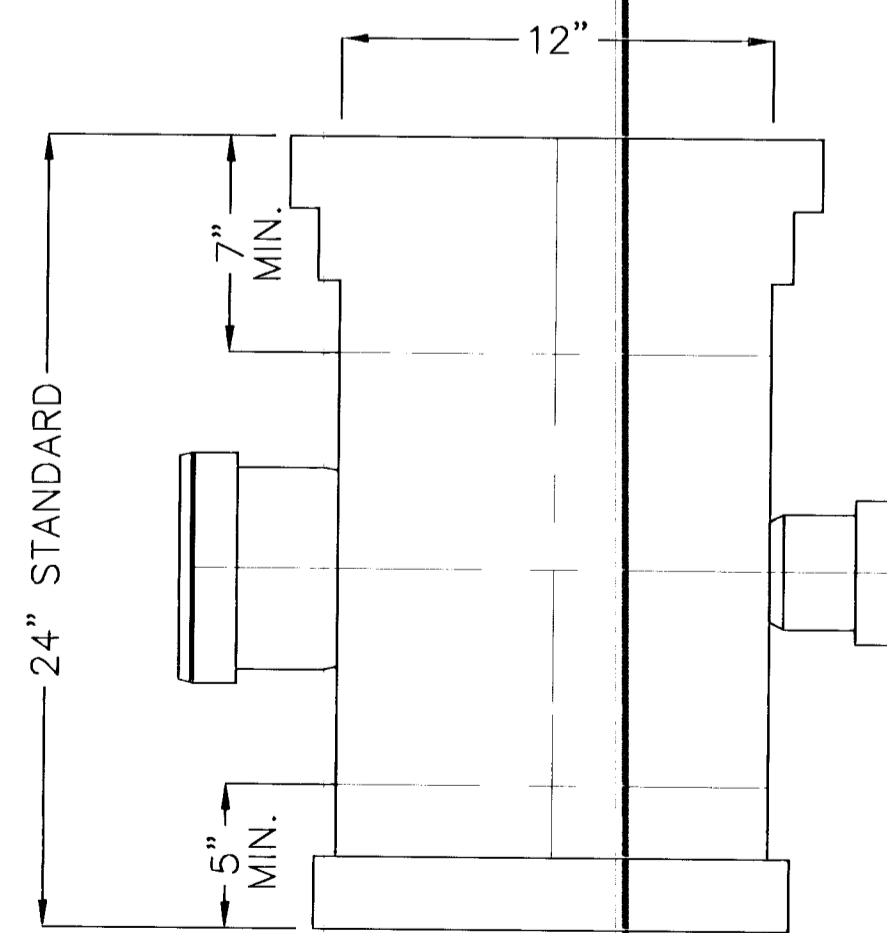
PAVEMENT UNDERDRAIN DETAIL

(NO SCALE)



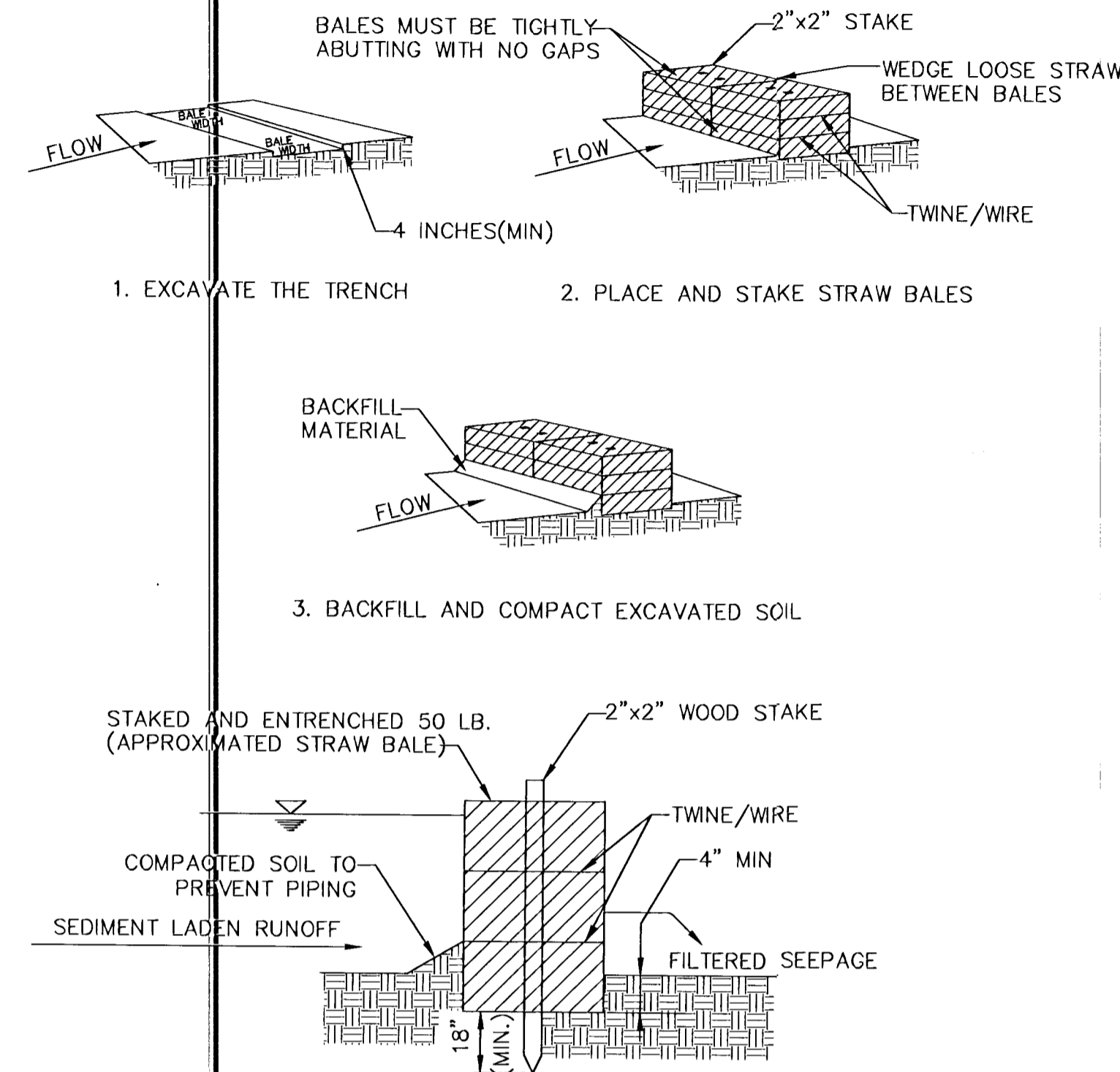
8" DRAIN BASIN

(NOT TO SCALE)



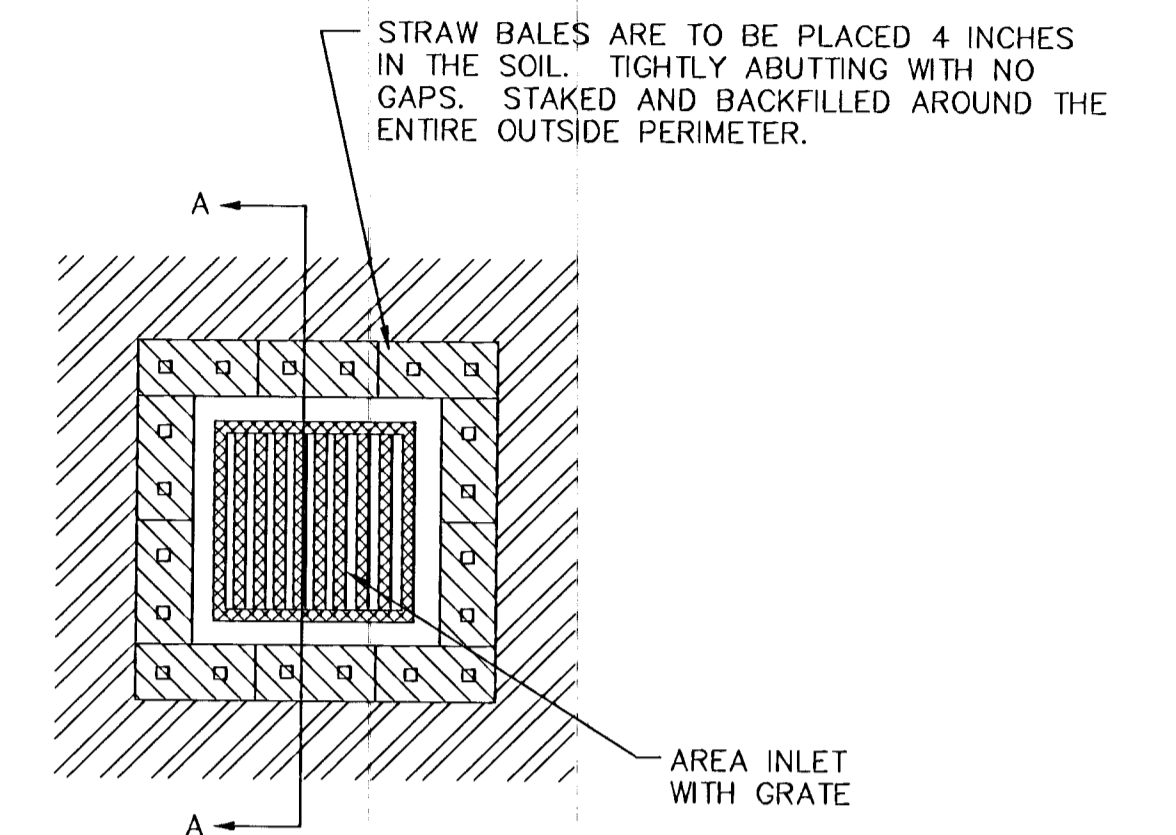
12" DRAIN BASIN

(NOT TO SCALE)



CROSS-SECTION OF A PROPERLY INSTALLED STRAW BALE

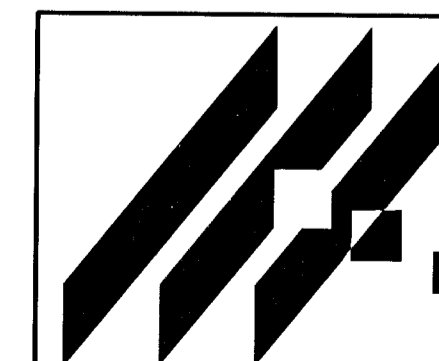
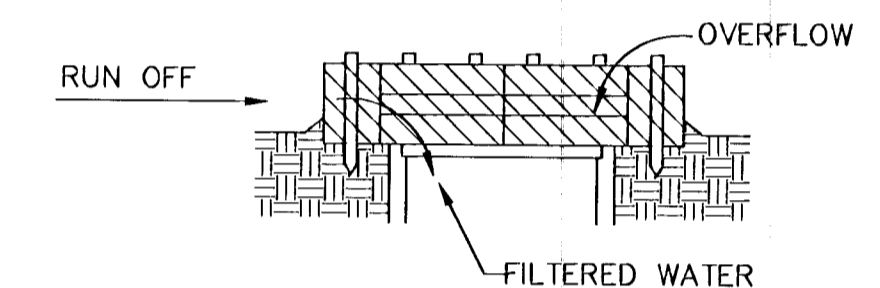
STRAW BALE DIKES FOR DRAINAGE CHANNELS



SECTION AA

NOTE: STRAW BALE FILTERS ARE NOT TO BE USED IF ADJACENT AREA TO INLET IS PAVED. SEE DETAIL 2 FOR FILTERS ON PAVED AREA

STRAW BALE FILTER FOR AREA INLET



MID-KANSAS ENGINEERING CONSULTANTS, INC.
411 N. WEBB ROAD
WICHITA, KS. 67206
316-684-9600

NORTHEAST BASEBALL/SOCCER COMPLEX
PROJECT NAME

DRAINAGE DETAILS

SHEET TITLE JTC	DAC	JTC
DESIGN BY:	DRAWN BY:	CHECKED BY:
DATE AUGUST 1999	JOB NO. 98026	SHEET / OF 6 / 7