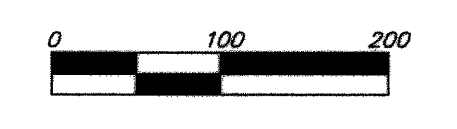
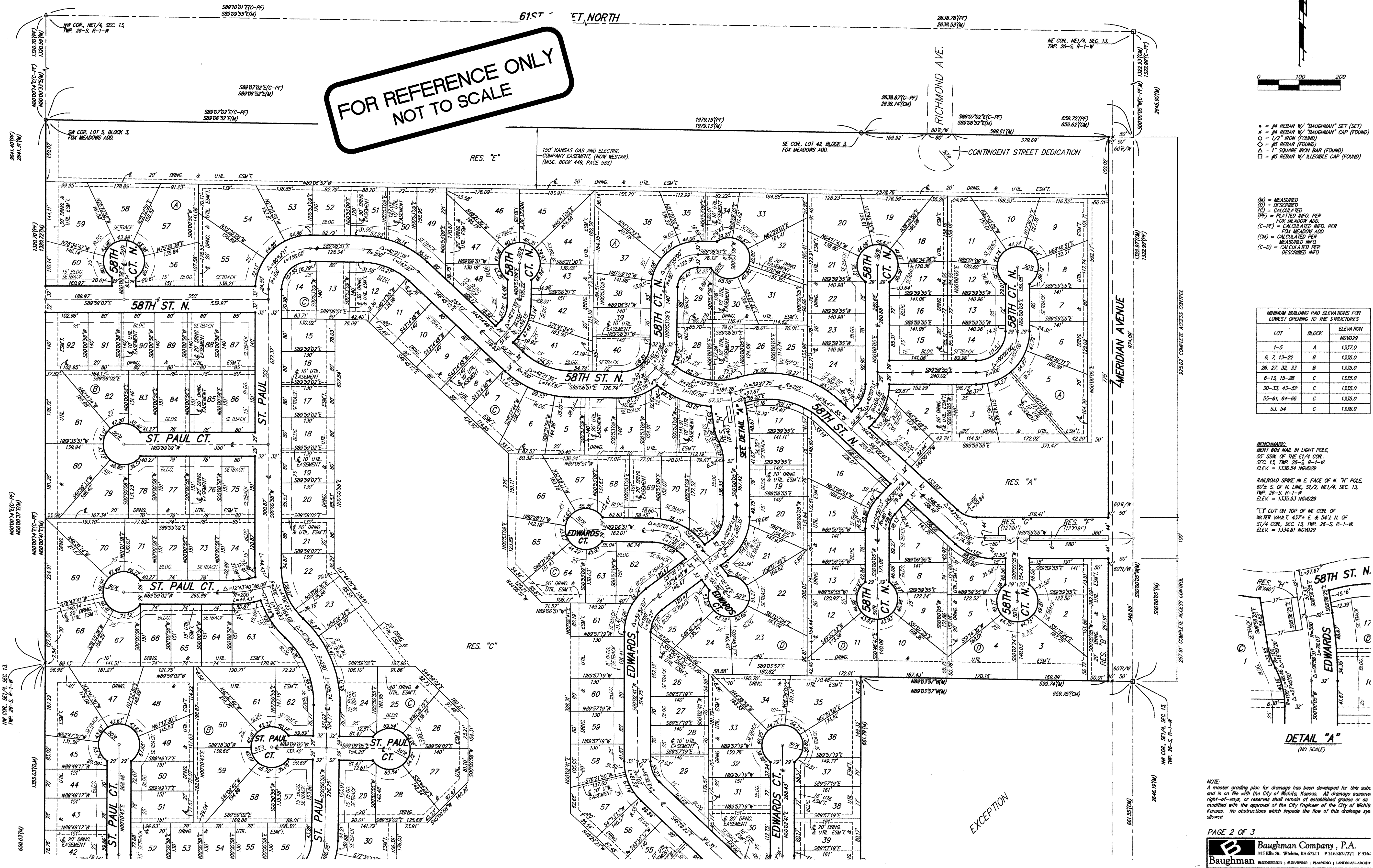


# NORTHGATE ADDITION WICHITA, SEDGWICK COUNTY, KANSAS

FOR REFERENCE ONLY  
NOT TO SCALE



- = #4 REBAR W/ "BAUGHMAN" SET (SET)
- = #4 REBAR W/ "BAUGHMAN" CAP (FOUND)
- = 1/2" IRON (FOUND)
- = #5 REBAR (FOUND)
- = 1" SQUARE IRON BAR (FOUND)
- = #5 REBAR W/ IRREGULAR CAP (FOUND)

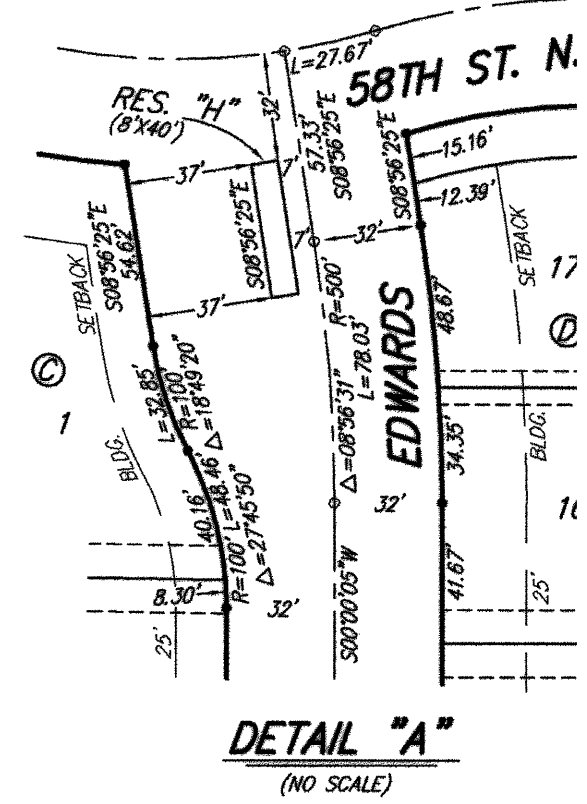
- (M) = MEASURED
- (C) = CALCULATED
- (P) = PLATTED INFO. PER FOX MEADOW ADD.
- (C-P) = CALCULATED INFO. PER FOX MEADOW ADD.
- (CM) = CALCULATED PER MEASURED INFO.
- (C-D) = CALCULATED PER DESCRIBED INFO.

| LOT            | BLOCK | ELEVATION |                                  |
|----------------|-------|-----------|----------------------------------|
|                |       | MINIMUM   | LOWEST OPENING TO THE STRUCTURES |
| 1-5            | A     | 1,337.0   |                                  |
| 6, 7, 13-22    | B     | 1,335.0   |                                  |
| 26, 27, 32, 33 | B     | 1,335.0   |                                  |
| 6-13, 15-28    | C     | 1,335.0   |                                  |
| 30-33, 43-52   | C     | 1,335.0   |                                  |
| 55-61, 64-66   | C     | 1,335.0   |                                  |
| 53, 54         | C     | 1,336.0   |                                  |

**BENCHMARK:**  
BENT 60# NAIL IN LIGHT POLE,  
55' SSW. OF THE E1/4 COR.,  
SEC. 13, TWP. 26-S, R-1-W.  
ELEV. = 1338.54 NVD29

**RAILROAD SPIKE IN E. FACE OF N. 7" POLE**  
80'± S. OF N. LINE, S1/2 NE1/4, SEC. 13,  
TWP. 26-S, R-1-W.  
ELEV. = 1335.93 NVD29

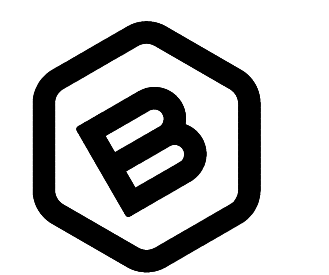
**"I" CUT ON TOP OF NE COR. OF**  
WATER VALVE 4.37' E & 54.1' N. OF  
S1/4 COR., SEC. 13, TWP. 26-S, R-1-W.  
ELEV. = 1334.81 NVD29



**NOTE:**  
A master grading plan for drainage has been developed for this sub and is on file with the City of Wichita, Kansas. All drainage easements right-of-ways, or reserves shall remain established grades or as modified with the approval of the City Engineer of the City of Wichita, Kansas. No obstructions which impede the flow of this drainage are allowed.

PRELIMINARY PLAN. NOT FOR CONSTRUCTION.

This document is preliminary in nature and is not a final, signed and sealed document.



BAUGHMAN COMPANY

315 Ellis St.  
Wichita, KS 67211  
316-262-7271  
BaughmanCo.com

COPY OF PLAT

NORTHGATE ADDITION  
Phase 4B

WATER DISTRIBUTION SYSTEM

PROJECT NUMBER:

DESIGN: DRAWN:

DATE: June 30, 2021

SHEET **12** OF **13**