

GENERAL NOTES:

- The Contractor shall comply with all applicable safety regulations. All construction shall be completed following current City Standard Specifications and Special Provisions.
- Contractor will be required to provide notice to utility companies a minimum of seventy-two (72) hours prior to any excavation, as follows:

 Kansas One-Call 687-2470

 The Contractor must notify the following in case of an emergency:

 AT&T 1-800-246-8464
 City of Wichita Water & Sewer Dept. 1-316-219-8921
 City of Wichita Stormwater 1-316-268-4090
 City of Wichita Traffic 1-316-268-4034
 Cox Communications 1-888-249-3530
 Evergy 1-800-544-4857
 Kansas Gas Service 1-888-482-4950
- Utility service lines, poles, etc. are to be adjusted as necessary by others prior to construction unless the plans specifically call for their adjustment by the Contractor or unless the plans specifically identify a utility to be adjusted by its owner during construction. Existing utilities and their location, as shown on the plans, represent the best information obtainable for design. The Contractor will be required to work around existing utilities within the right-of-way which do not conflict with proposed construction.
- Rubble from the removal of miscellaneous structures and excess excavation which is to be wasted shall be disposed on sites to be provided by the Contractor. These sites shall be approved by the Engineer as to suitability, appearance and site location. Locations, in the opinion of the Engineer, that will leave an unsightly appearance will not be approved. All disposal sites must be approved by the Kansas Department of Health and Environment. Material either stockpiled or disposed of in a flood plain will require a Kansas State Board of Agriculture permit. Any material dumped in waters of the United States or wetlands is subject to U.S. Corps. of Engineers permitting regulations. Any material buried or stockpiled beyond approved construction limits will require additional archaeological investigations unless buried in a previously approved borrow location.
- Trees and shrubs in public right-of-way which are in direct conflict with proposed new construction shall be removed by the Contractor with the Engineer's approval. Trees and shrubs which are not in direct conflict with proposed new construction shall be saved and protected from damage.
- The Contractor shall give all property owners and/or tenants of developed property abutting the construction of this project a minimum of ten (10) days notice prior to start of construction.
- The Contractor shall be responsible for preserving property irons. The Contractor will be required to re-establish any property irons which are damaged or destroyed by his construction operations. Such irons shall be re-established by a licensed land surveyor in accordance with state laws.
- The Engineering Division shall field locate water valves one time during construction when requested by the Contractor. It shall be the Contractor's responsibility to preserve such field locations during the construction process. Water valves, valve boxes or fire hydrants damaged during construction shall be repaired by Contractor at his own expense. Valve boxes and water meters within the project limits shall be adjusted to match final grades by the Contractor.
- If traffic will be impacted by construction, a traffic control plan must be submitted and approved by the City Traffic Engineer, at traffic@wichita.gov before construction can begin. The Contractor shall be responsible for all traffic control measures to facilitate construction. All construction zone markings and signage shall conform to the latest version of the Manual on Uniform Traffic Control Devices (MUTCD) as published by the US Dept. of Transportation, Federal Highway Administration. All costs associated with construction markings and signage shall be the Contractors responsibly.
- All elevations shown are NAVD 88.
- All areas disturbed during construction that will not be under proposed pavement shall be restored to match existing conditions.
- Opening and closing of water valves shall be done slowly to

prevent damage to the water distributions system from water hammer. All valves closed by the contractor must be reopened as new construction permits. The project inspector must ascertain that any valve closed by the Contractor is reopened. The contractor will be permitted to operate water valves only when the project inspector assigned to the project is present.

- The Contractor shall install a Tracer Wire and Set Test Stations along all water pipe installed in accordance with City Specifications and Tracer Wire Detail on detail sheet WL-101, cost is subsidiary to pipe installation.
- The contractor shall provide materials for temporary blowoff of waterlines. Connections to the existing waterline(s) shall be made with clean, swabbed pipe and flushed upon completion of tie-ins.
- Requests for short term water interruptions shall be made to the City Water Distribution Division and will be subject to their approval. The Contractor shall give written notice to any property owner, business, and/or tenants that will have water service interrupted at least 5 days in advance. Such notifications should indicate the time and date that the water will be turned off and when the service will be restored. No business, property owner, and/or tenants shall be without water service for more than 8 hours. Proposed tie in locations which will affect water service to property owners shall be preformed during non-peak hours.
- The Contractor must schedule the connections to the existing main with the City such that there is a minimum disruption of service. Connections shall be made during periods of low water usage. The Contractor shall submit his proposed schedule for completing work for City approval at least 10 days prior to beginning construction.
- Deflections at pipe joint or couplings shall not exceed the pipe manufactures recommended maximum. Where deflections are greater than the maximum allowed, the contractor shall utilize fittings.
- Any existing joint exposed during excavation shall be replaced if within four feet of proposed water main joint.
- Valves 12 inch and larger are to be operated by the City Water Distribution Division, 48 hours of advance notice is required with the water Dispatch at 316-219-8921.
- The Contractor shall protect from damage and support existing utilities through construction as approved by the utility owner and the Engineer at the contractors expense.
- Contractor shall limit the extent of trench openings overnight and weekends to less than 50 feet.
- Excess dirt generated from installation of underground utilities is to remain on site and be stockpiled on Lot 1 & 2, Block 3.
- Maintain a minimum of 10-foot horizontal separation between all water lines (mains, services, and fire hydrants) and all sanitary sewer lines (main, services, and manholes). All separation distances are to be measured from edge-to-edge, at the closest point.
- Maintain a minimum of 2-foot vertical separation between all water lines (main and services) and all gravity sanitary sewer lines (mains, services, and manholes) at crossings. All separation distances are to be measured from edge-to-edge, at the closest point.
- Maintain a minimum of 2-foot vertical separation between all water lines (mains and services) and all pressurized sanitary sewer lines (force mains and services) at crossings. Waterlines must always be placed above pressurized sanitary sewer lines where they cross. All separation distances are to be measured from edge-to-edge, at the closest point.

Benchmarks

BENCHMARK #1:
 CHISELED SQUARE ON THE TOP OF CURB IN FRONT OF 773 N. SAINT PAUL, 63' SOUTH OF THE SOUTHEAST CORNER OF KIMBERLY ADDITION
 ELEVATION = 1307.47 (NAVD88, G18)

BENCHMARK #2:
 CHISELED SQUARE ON THE TOP OF CURB IN FRONT OF 786 N. SAINT PAUL, 28' NORTH OF THE NORTHEAST CORNER OF KIMBERLY ADDITION
 ELEVATION = 1304.16 (NAVD88, G18)

WATER DISTRIBUTION SYSTEM

to serve

Kimberly Addition

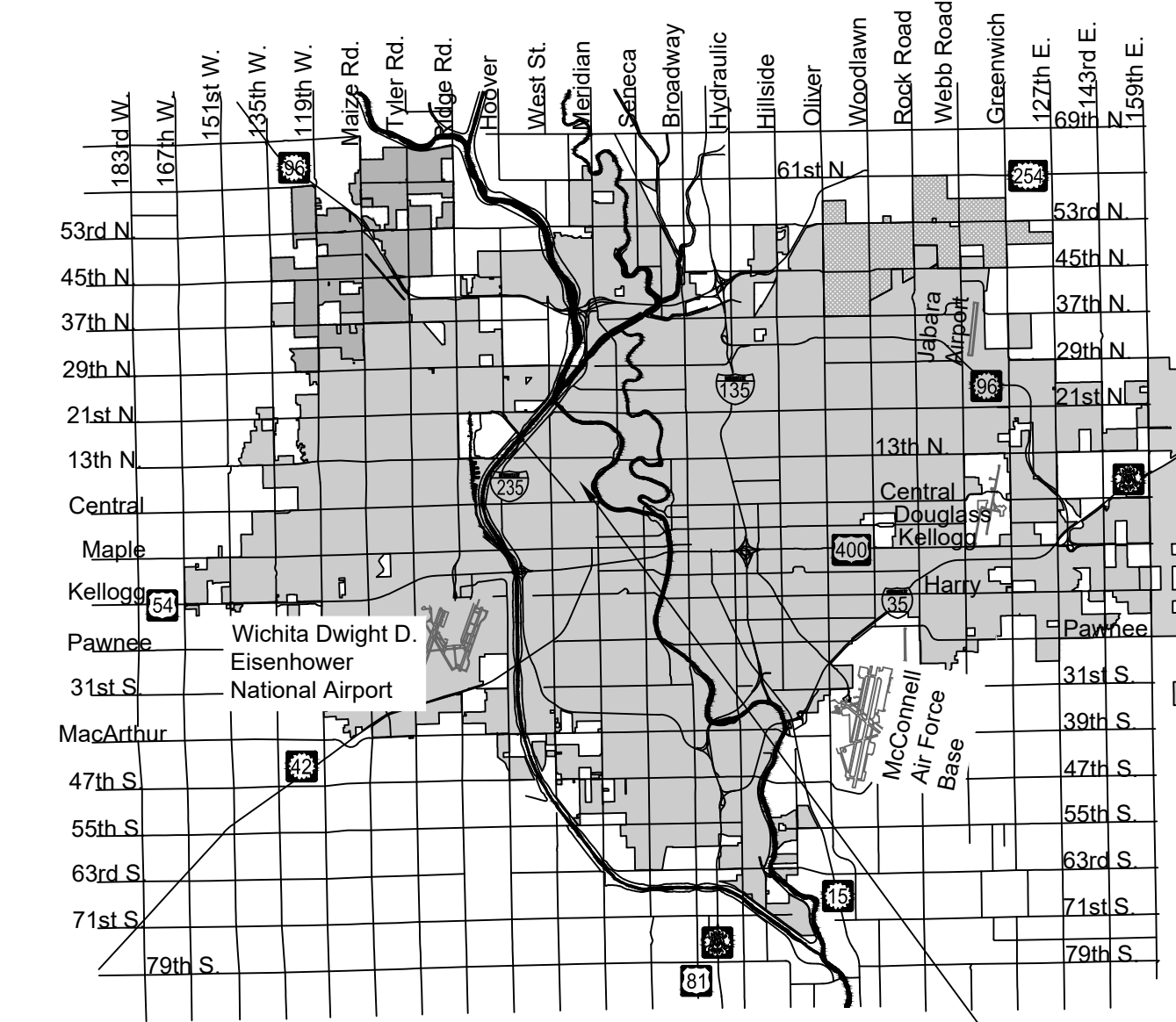
CITY OF WICHITA, KANSAS

Gary Janzen, P.E. City Engineer

Project Number: 448-2021-022907

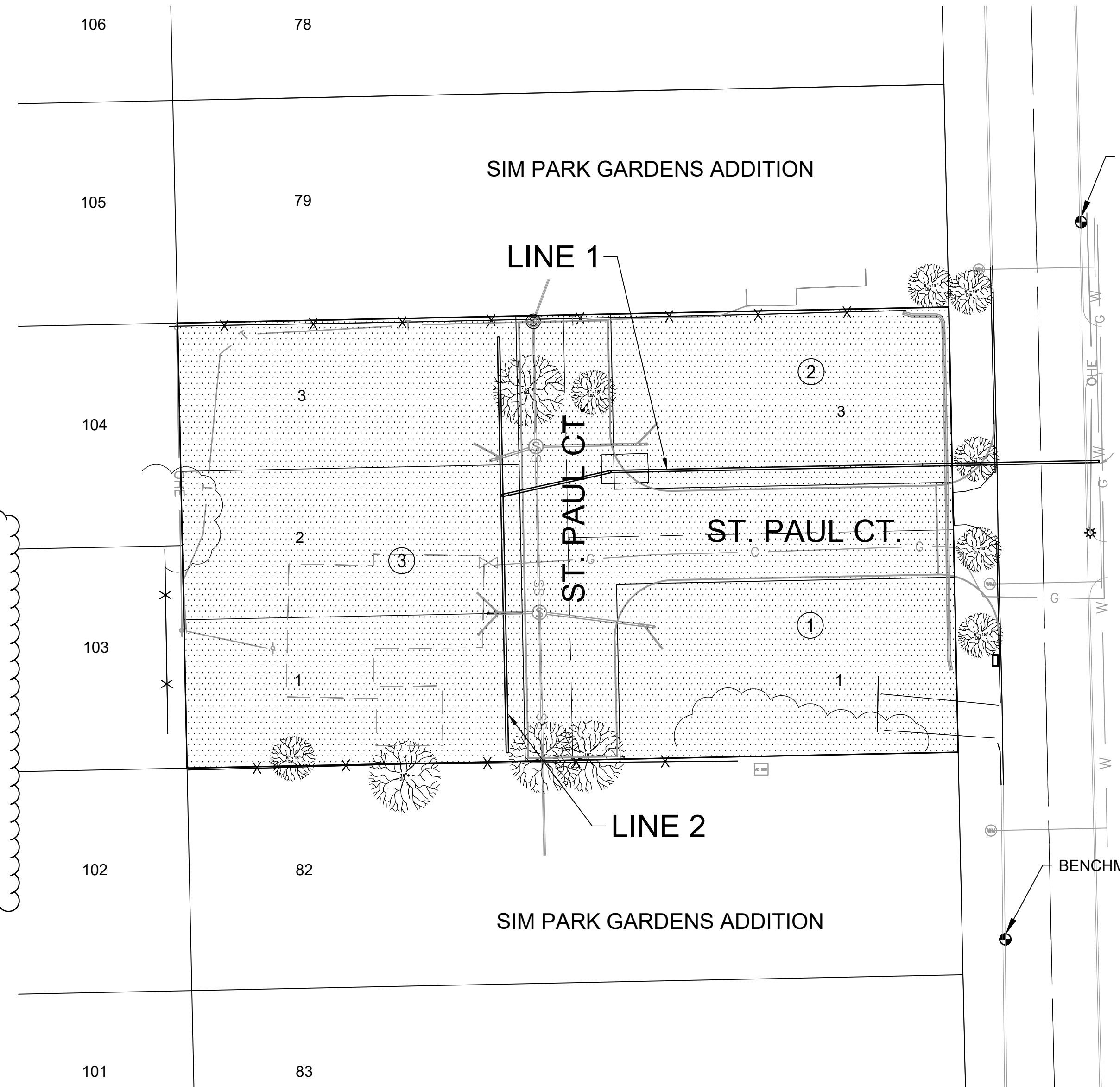
Org Code Number: 47115321

Munis Number: E1066



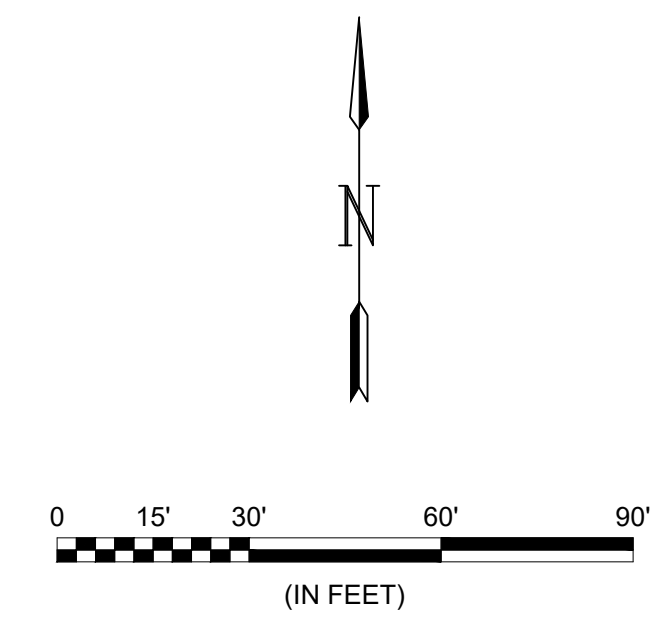
Vicinity Map

PROJECT LOCATION



IMPROVEMENT DISTRICT

| SHEET INDEX | |
|-------------|---------------------------------|
| SHEET | TITLE |
| 1 | TITLESHEET |
| 2 | WATER ASSEMBLY DETAILS |
| 3 | MISCELLANEOUS WATER DETAILS |
| 4 | WATER LINE 1 |
| 5 | WATER LINE 2 |
| 6 | COORDINATE MAP |
| 7 | EROSION CONTROL PLAN |
| 8 | BACK OF CURB DETAILS |
| 9 | SUBDIVISION DEVELOPMENT PROCESS |
| 10 | STREET IMPROVEMENT PROJECTS |
| 11 | STRAW BALE DETAILS |
| 12 | SILT FENCE DETAILS |
| 13 | PLAT |



PLAN SET REVIEWED BY GARVER
Cherrish Bolin 8/24/21
 SIGNATURE DATE

AUGUST 2021

PLANS PREPARED BY



GARVER
 8535 E. 21st Street N.
 Suite 130
 Wichita, KS 67206
 (316) 264-8008
www.GarverUSA.com
 Project No. ####

NOTE: All coordinates listed are modified NAD83 Kansas State Plane Zone South unless otherwise noted. To convert listed coordinates to NAD83 Kansas State Plane Zone South coordinates multiply the northing and easting by the project scale factor of 0.999885189. Elevation datum is NAVD88 Geoid 12B unless otherwise noted.