

File: L:\2021\12\14\1008 - Kimberly Addition Engineering\Drawings\C3D\WATER\WATER LINE 2 9-14-21.dwg Last Save: 9/14/2021 9:32 AM Last saved by: MCarraeraPiedra
 Last plotted by: Carraera-Piedra, Mariela Plot Date: 9/14/2021 9:37 AM Plotter used: None



© 2021 GARVER, LLC
 THIS DOCUMENT, ALONG WITH THE IDEAS AND DESIGNS CONVEYED HEREIN, SHALL BE CONSIDERED INSTRUMENTS OF PROFESSIONAL SERVICE AND ARE PROPERTY OF GARVER, LLC. ANY USE, REPRODUCTION, OR DISTRIBUTION OF THIS DOCUMENT, ALONG WITH THE IDEAS AND DESIGNS CONTAINED HEREIN, IS PROHIBITED UNLESS AUTHORIZED IN WRITING BY GARVER, LLC OR EXPLICITLY ALLOWED IN THE GOVERNING PROFESSIONAL SERVICES AGREEMENT FOR THIS WORK.

8535 E. 21st Street N.
 Suite 130
 Wichita, KS 67206
 (316) 264-8008



| REV. | DATE | DESCRIPTION | BY |
|------|------|-------------|----|
| | | | |
| | | | |
| | | | |



CITY OF WICHITA
 WICHITA, KANSAS
 KIMBERLY ADDITION
 WATER

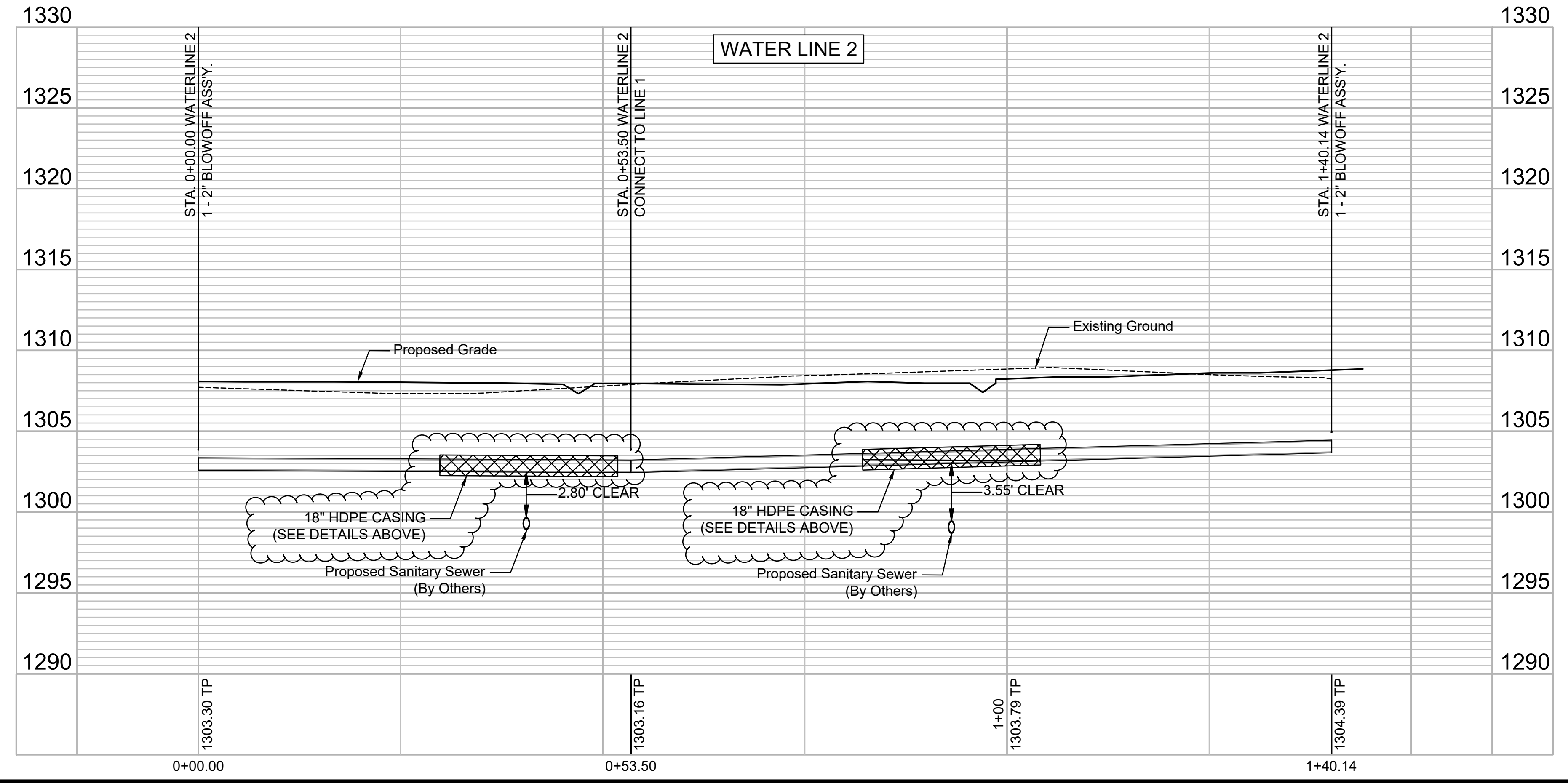
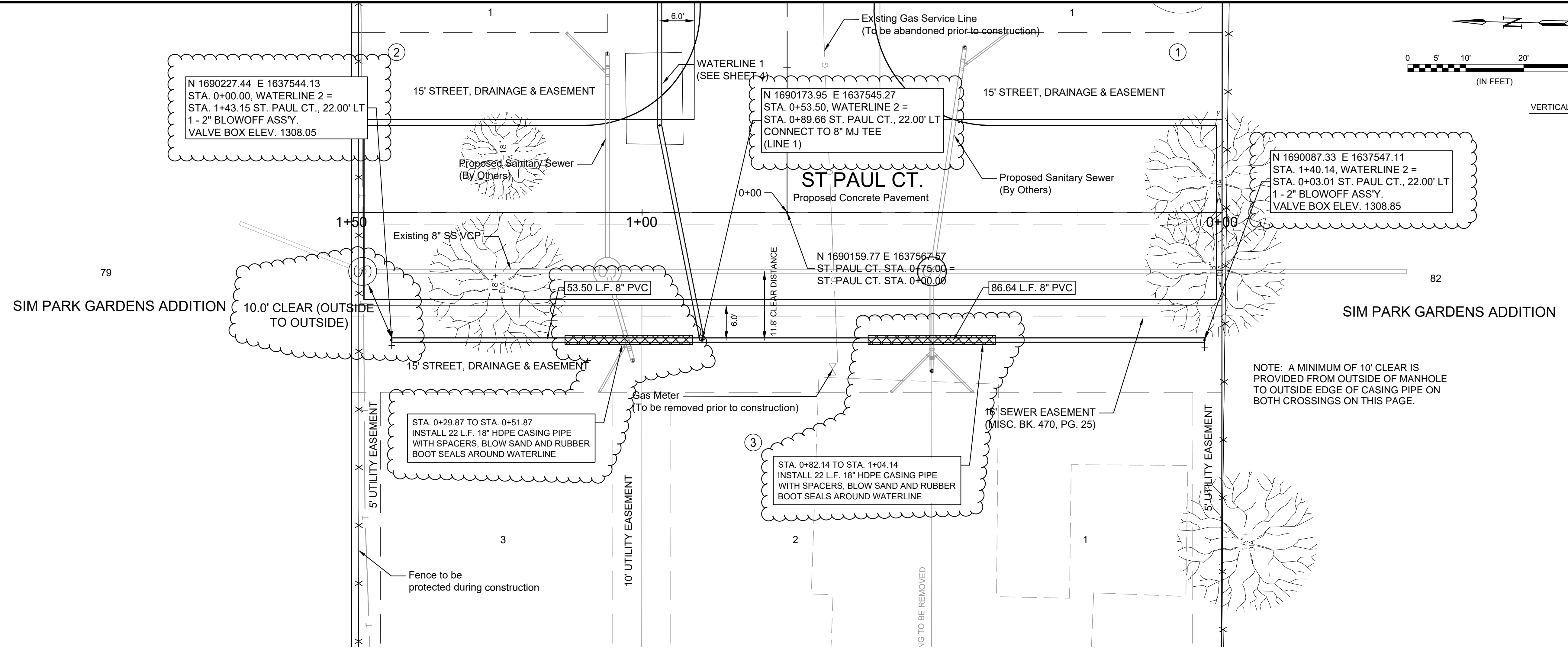
WATER LINE 2

JOB NO.: 21T41008
 DATE: AUGUST 2021
 DESIGNED BY: KWL
 DRAWN BY: MCP

BAR IS ONE INCH ON ORIGINAL DRAWING
 IF NOT ONE INCH ON THIS SHEET, ADJUST SCALES ACCORDINGLY.

DRAWING NUMBER

SHEET NUMBER **5** OF **12**



79

82

SIM PARK GARDENS ADDITION

SIM PARK GARDENS ADDITION

NOTE: A MINIMUM OF 10' CLEAR IS PROVIDED FROM OUTSIDE OF MANHOLE TO OUTSIDE EDGE OF CASING PIPE ON BOTH CROSSINGS ON THIS PAGE.