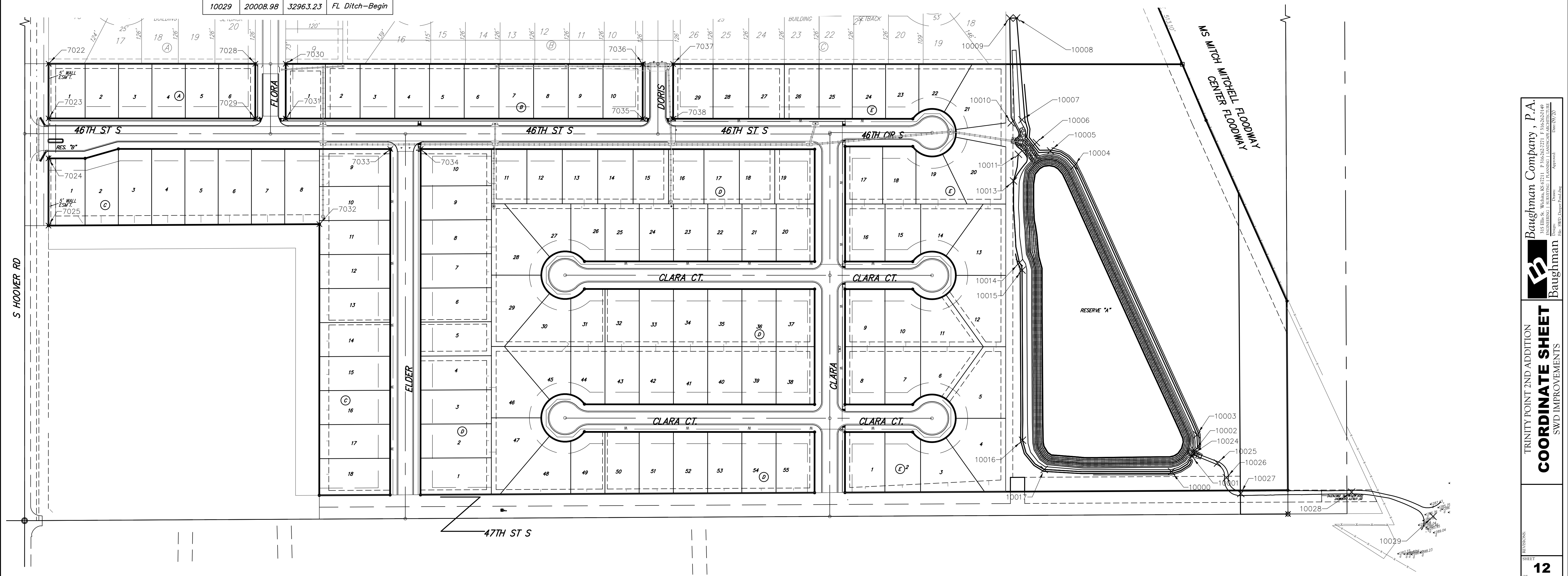
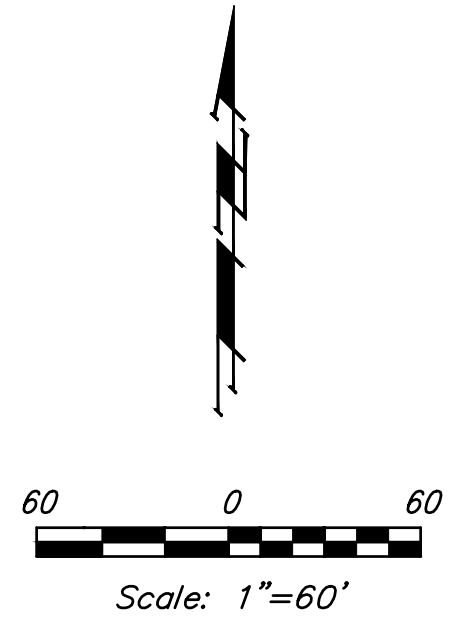


POND

Point #	Northing	Easting	Raw Description
10000	20103.17	32412.91	Pond Top
10001	20135.13	32455.68	Pond Top
10002	20147.52	32462.19	Pond Top
10003	20180.46	32466.43	Pond Top
10004	20745.68	32208.17	Pond Top
10005	20777.31	32158.33	Pond Top
10006	20794.89	32128.75	Pond Top
10007	20842.72	32098.46	Pond Top
10008	21056.70	32087.15	Pond Top
10009	21056.39	32072.65	Pond Top
10010	20836.22	32075.75	Pond Top
10011	20770.10	32090.88	Pond Top
10013	20714.14	32080.59	Pond Top
10014	20542.31	32092.98	Pond Top
10015	20526.68	32098.55	Pond Top
10016	20169.06	32099.44	Pond Top
10017	20107.62	32145.15	Pond Top
10024	20141.01	32459.53	FL Ditch-End
10025	20121.04	32509.71	FL Ditch-P.T.
10026	20090.15	32528.47	FL Ditch-P.C.
10027	20057.13	32558.69	FL Ditch-P.T.
10028	20060.08	32791.90	FL Ditch-P.C.
10029	20008.98	32963.23	FL Ditch-Begin

IRONS

Point #	Northing	Easting	Raw Description
7022	20960.54	30050.40	PROP_IRON
7023	20845.54	30050.34	PROP_IRON
7024	20761.54	30050.30	PROP_IRON
7025	20620.28	30050.23	PROP_IRON
7028	20960.34	30485.40	PROP_IRON
7029	20845.34	30485.34	PROP_IRON
7030	20960.31	30549.40	PROP_IRON
7031	20845.31	30549.34	PROP_IRON
7032	20623.28	30620.22	PROP_IRON
7033	20781.20	30769.31	PROP_IRON
7034	20781.17	30833.31	PROP_IRON
7035	20844.94	31300.37	PROP_IRON
7036	20959.94	31300.43	PROP_IRON
7037	20959.91	31364.43	PROP_IRON
7038	20844.91	31364.37	PROP_IRON



TRINITY POINT 2ND ADDITION
COORDINATE SHEET
 SWD IMPROVEMENTS

Baughman Company, P.A.
 HELEN S. WILSON, REGISTERED PROFESSIONAL ENGINEER
 ENGINEERING SURVEYING PLANNING LANDSCAPE ARCHITECTURE
 Baughman
 Date: 09/20
 File: SWD Coord Point.sxd

REVISIONS
 SHEET
12
 OF
13