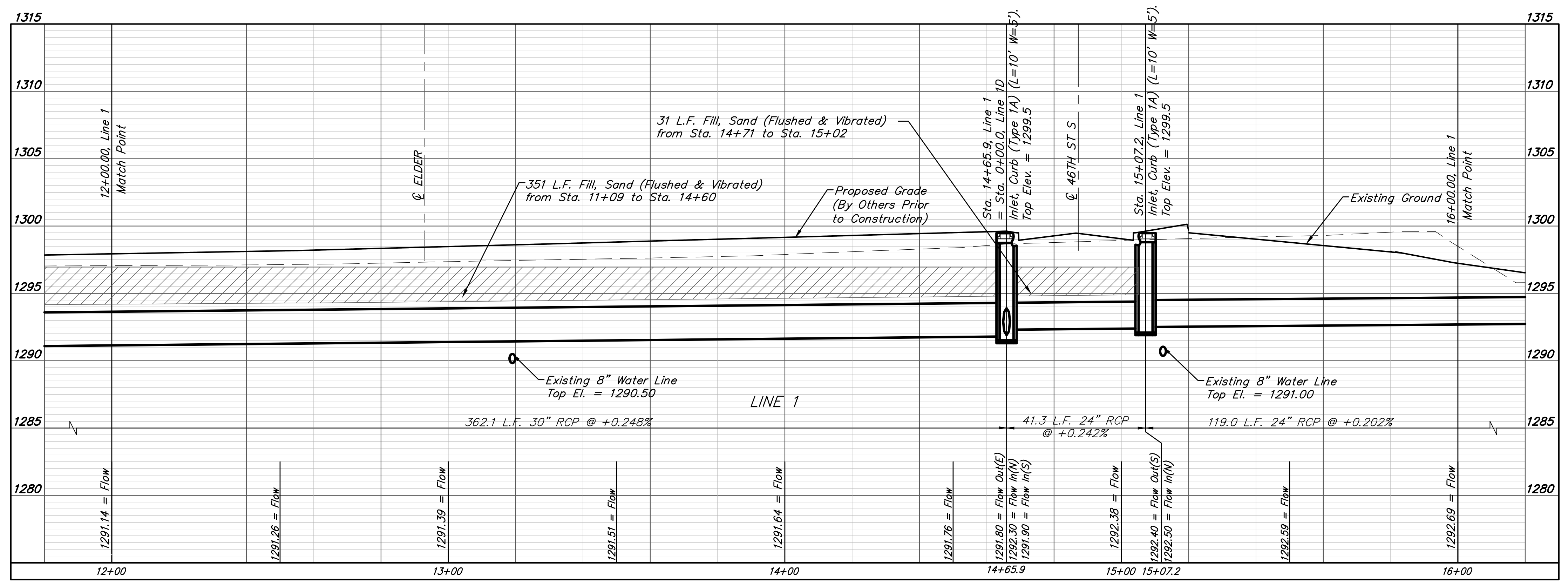
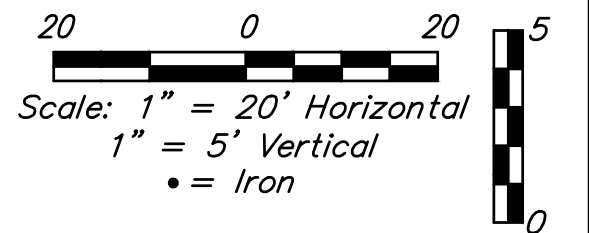
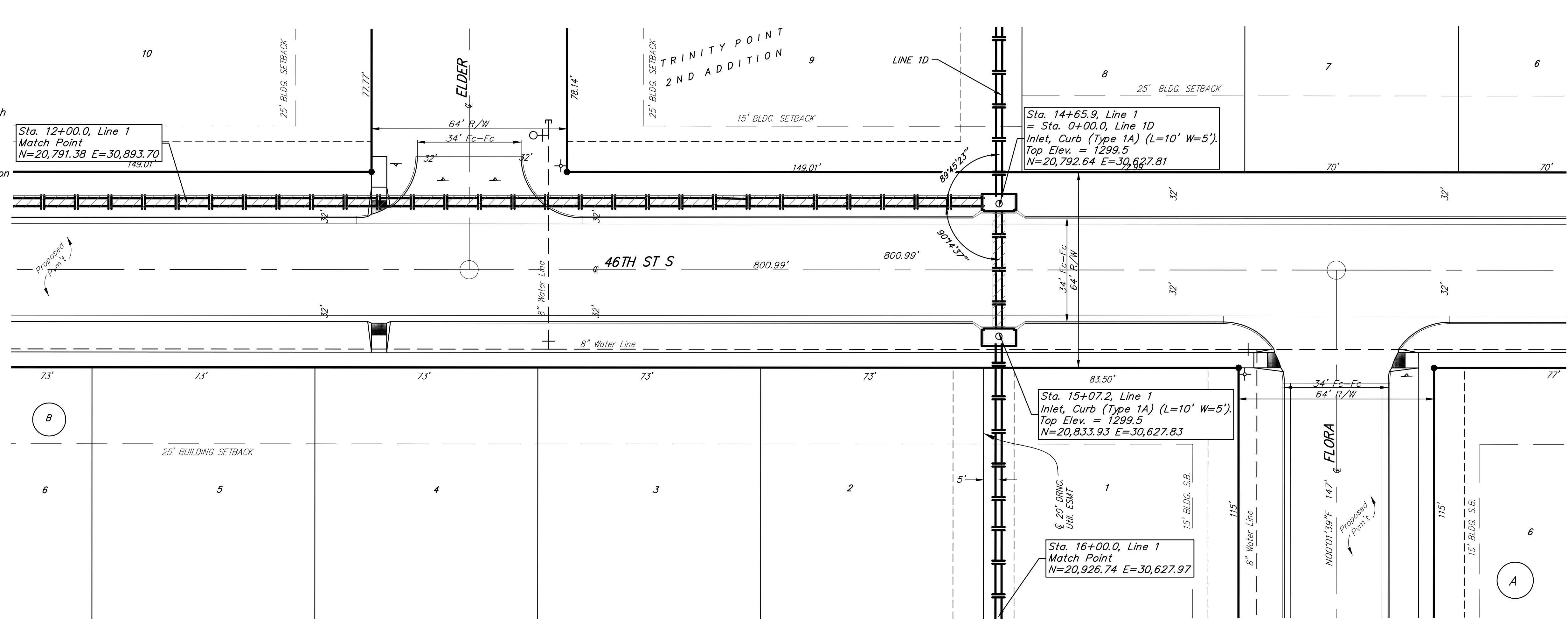


**BENCHMARKS:**  
 BM #1: "□" Cut in face of curb inlet near SE corner of Lot 30, Block C, Gray's 5th Add. Elev. = 1297.86 NAVD88  
 BM #2: "□" Cut in top of curb on east side of Flora, ±10' north of south property line of Gray's 5th Add. Elev. = 1302.40 NAVD88  
 BM #3: "□" Cut in top of curb on east side of Flora, adjacent to common lot line of Lots 3&4, Block C, Gray's 5th Add. Elev. = 1305.32 NAVD88



**Baughman Company, P.A.**  
 ENGINEERS, ARCHITECTS, PLANNERS, LANDSCAPE ARCHITECTS  
 1100 17th St S, Suite 200, Minneapolis, MN 55404  
 Phone: 612.338.1100 Fax: 612.338.1101  
 www.baughmancompany.com

TRINITY POINT 2ND ADDITION  
**LINE 1**  
 STREET & SWS IMPROVEMENTS