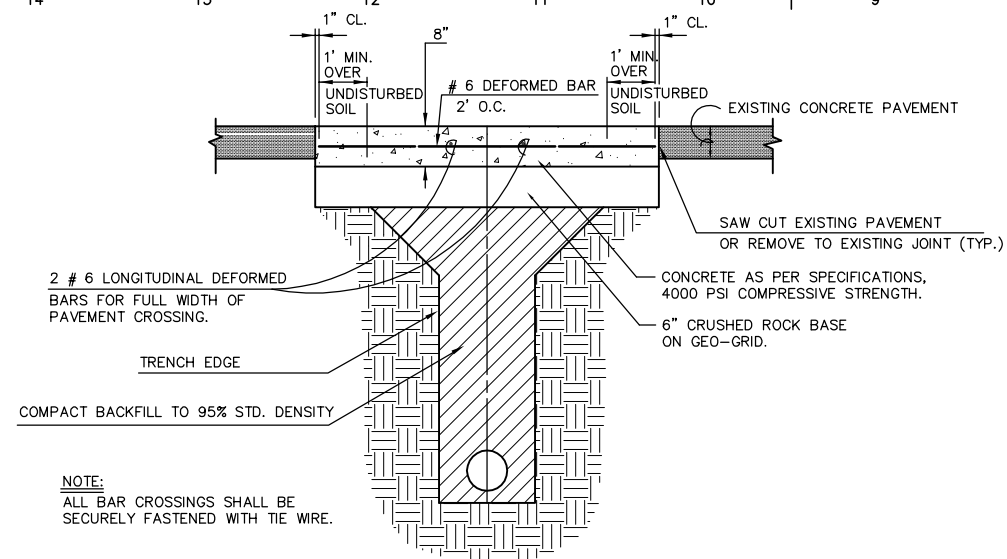


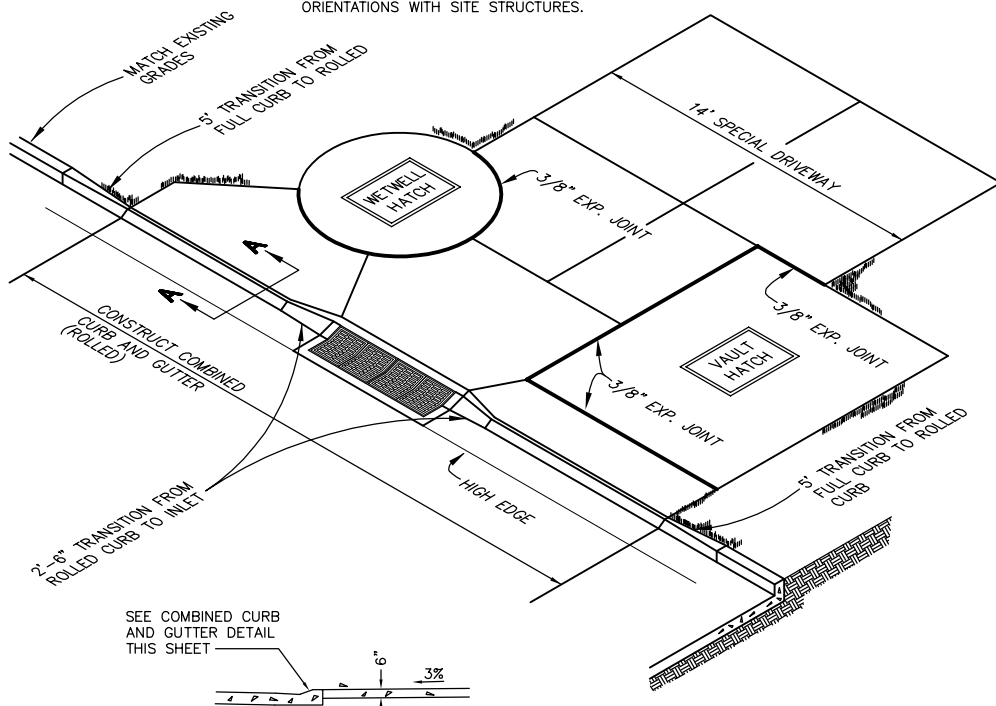
TYPE I BARRICADE
NO SCALE



CONCRETE PAVEMENT REPLACEMENT DETAIL
NO SCALE

NOTE:
ALL BAR CROSSINGS SHALL BE SECURELY FASTENED WITH TIE WIRE.

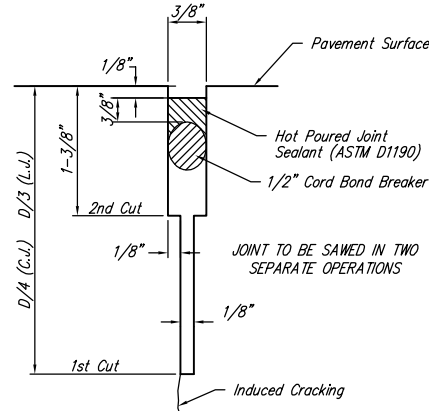
NOTE:
REFERENCE PAVING PLANS FOR ALL ELEVATIONS, SLOPES, DIMENSIONS, AND ORIENTATIONS WITH SITE STRUCTURES.



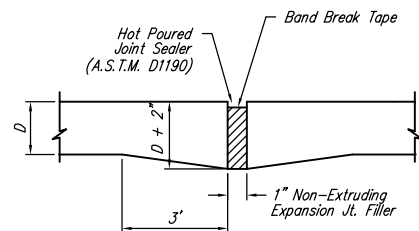
SECTION A-A
N.T.S.

FINISH:
THE CONCRETE PAVEMENT SHALL BE BRUSHED TRANSVERSELY WITH A FIBER OR WIRE BRUSH OF A TYPE APPROVED BY THE ENGINEER.

SPECIAL DRIVEWAY
NO SCALE

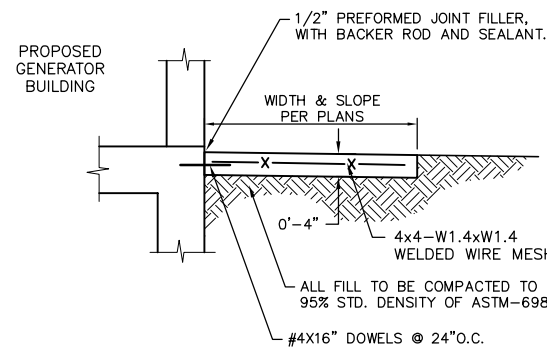


SAW JOINT DETAIL
NO SCALE



EXPANSION JOINT
NO SCALE

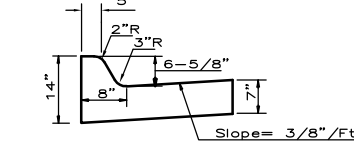
NOTE: Extra Thickness to be Subsidiary to Price of Square Yards Pavement



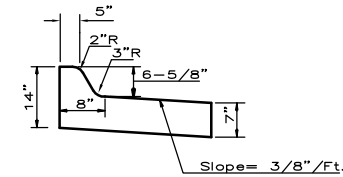
CONCRETE SIDEWALK DETAIL
NO SCALE

NOTE:
CONSTRUCT PAVING, AND CURB AND GUTTERS IN ACCORDANCE WITH LATEST ISSUE OF CITY OF WICHITA STANDARD SPECIFICATIONS.

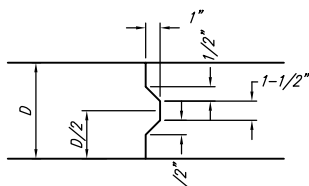
COMBINED (ROLLED) CURB AND GUTTER
NO SCALE



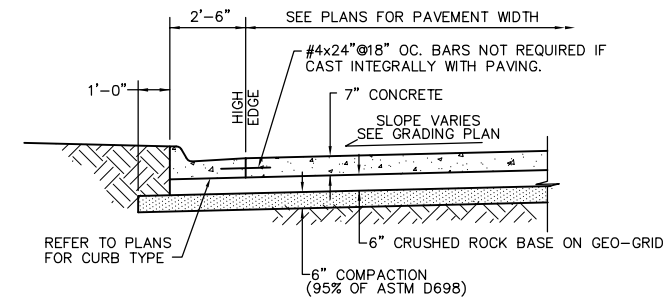
COMBINED (FULL) CURB AND GUTTER
NO SCALE



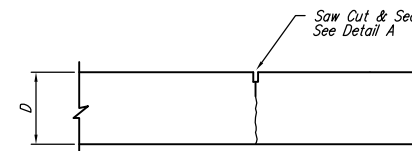
COMBINED (REVERSED) CURB AND GUTTER
NO SCALE



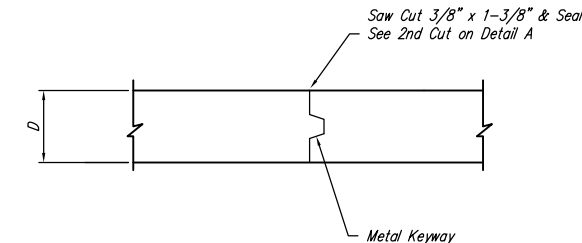
KEYWAY DETAIL
NO SCALE



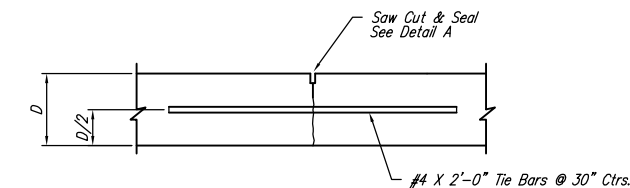
TYPICAL CONCRETE PAVEMENT SECTION
NO SCALE



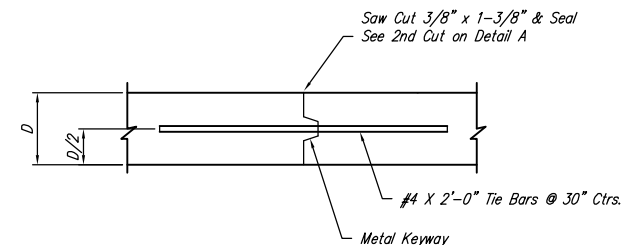
CONTRACTION JOINT DETAIL (C.J.)
NO SCALE



OPTIONAL CONTRACTION JOINT
NO SCALE



LONGITUDINAL JOINT DETAIL (L.J.)
NO SCALE



OPTIONAL LONGITUDINAL JOINT DETAIL (L.J.)
NO SCALE

| NO. | BY | DATE | DESCRIPTION |
|-----|-----|----------|--|
| 0 | DLM | 10/17/05 | ISSUE FOR CONSTRUCTION |
| | MJV | 4/26/07 | CONFORMING TO CONSTRUCTION RECORDS DELETED AIR RELEASE VAULT, ADDED 1'-0" TO EAST SIDE OF VALVE VAULT. |



CITY OF WICHITA, KANSAS
15th STREET PUMP STATION
AND FORCE MAIN

MISCELLANEOUS CIVIL DETAILS I

CONFORMING TO
CONSTRUCTION RECORDS
4/20/07



| DESIGNED BY | DLM | CHECKED BY | DLM |
|-------------|------------|------------|------------|
| DRAWN BY | MJM | DATE | JUNE, 2005 |
| PROJECT | 0301030310 | CONTRACT | - |

| DRAWING | REVISION |
|-----------|----------|
| C4 | 0 |

FILE: S:\ENVR\03310\3010\DWG\CIVIL\03310_C4-MISC_DTLS-1.dwg 10/21/2005 10:57:56 AM CST