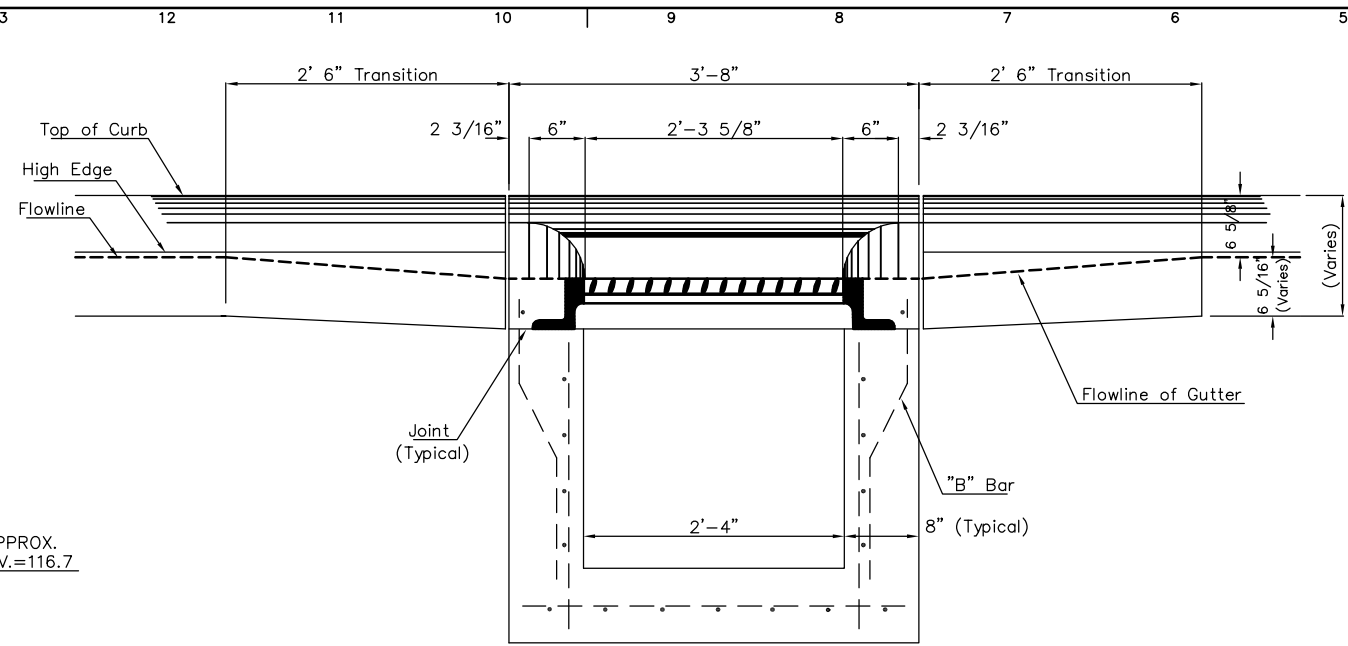
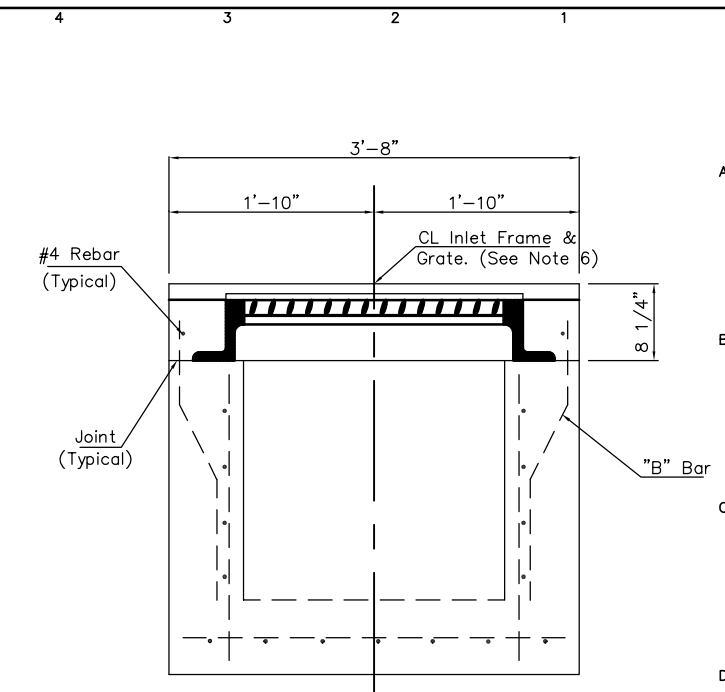


SECTION A-A



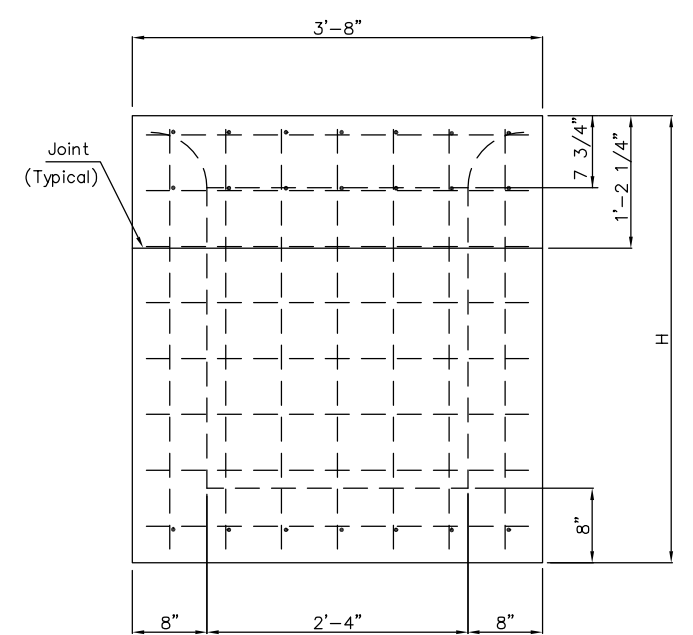
SECTION C-C



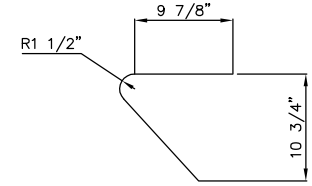
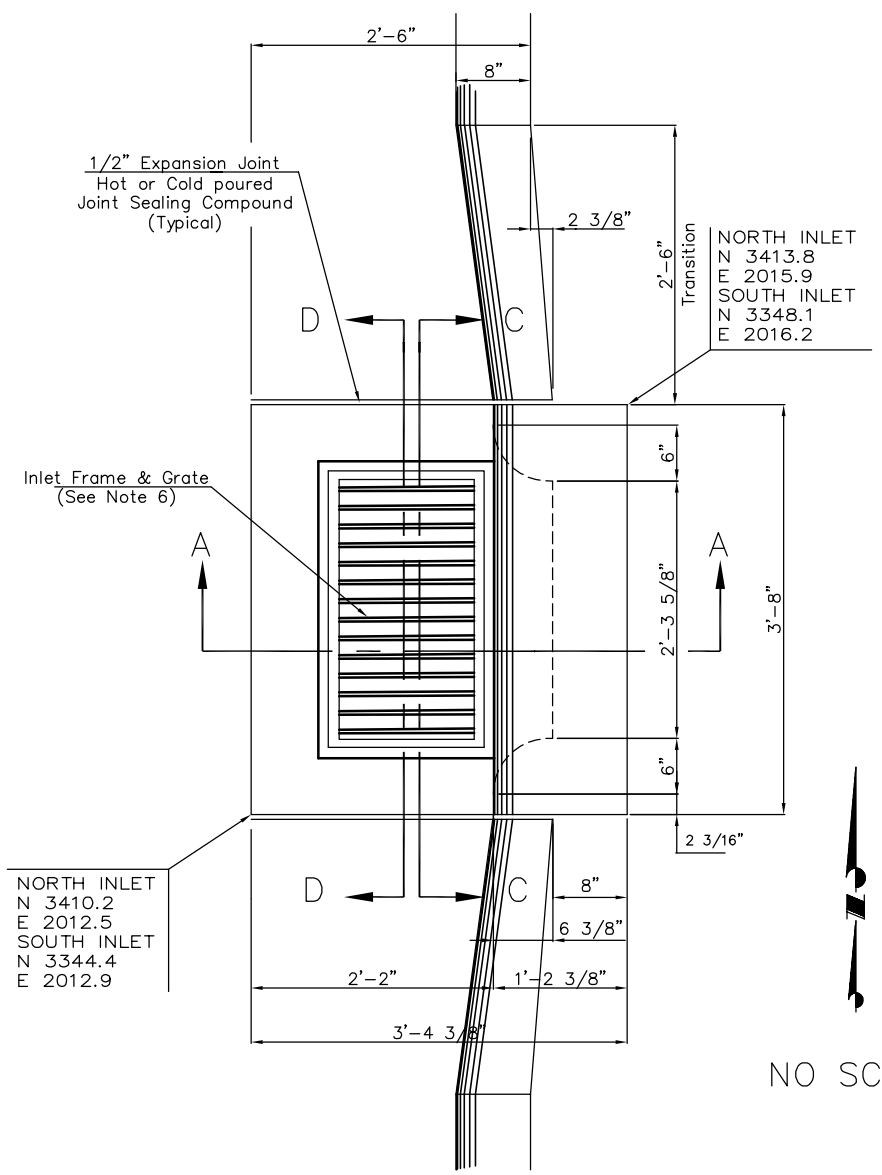
SECTION D-D

PIPE ON SOUTH SIDE OF NORTH INLET & NORTH SIDE OF SOUTH INLET.

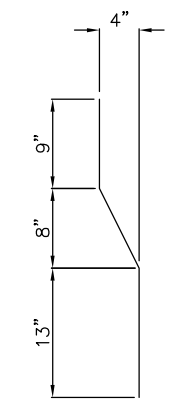
APPROX. ELEV.=116.7



REAR WALL



"A" Bar



"B" Bar

NO SCALE

General Notes

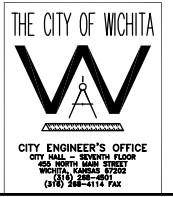
1. Use the concrete mix specified for the City of Wichita concrete pavement throughout. All exposed edges shall be finished with an edging tool. Reinforcing bars shall be bent around pipe.
2. Inlet invert shall be shaped with 8 sack mix concrete to create flow channels and to increase hydraulic efficiency such that the inlet will be self cleaning between all inlet and/or outlet pipes.
3. All bars are #4 with 6" spacing and shall have a minimum clearance of 1 1/2" inches unless otherwise noted on the plans.
4. When directed by the Engineer, a small opening may be required in the back of the inlet in order to drain a low area. Reinforcing bars will extend through the openings. No deductions in concrete quantities will be made for these openings.
5. No deductions will be made in pay length of curb, gutter, or curb and gutter through the inlet area.
6. Use Neenah R-3289 HV Single Inlet Frame and Grate or approved equal. Inlet frame to be proof load tested to 40,000 lbs. on unsupported side.
7. Reinforcing bars shall be cut or bent around pipes. No deduction in concrete quantities shall be made for pipe openings.
8. The vanes of the grate shall be oriented with respect to the flow arrows shown on the plans.
9. Coordinates on inlets are approximate and were established from field survey of existing brick inlets and pipes. Adjust as necessary per field conditions.

NO.	BY	DATE	DESCRIPTION
0	DLM	10/17/05	ISSUE FOR CONSTRUCTION
	MJV	4/26/07	CONFORMING TO CONSTRUCTION RECORDS DELETED AIR RELEASE VAULT, ADDED 1'-0" TO EAST SIDE OF VALVE VAULT.



**CITY OF WICHITA, KANSAS**  
**15th STREET PUMP STATION**  
**AND FORCE MAIN**  
**STANDARD TYPE II-M**  
**CURB INLET**

**CONFORMING TO**  
**CONSTRUCTION RECORDS**  
**4/20/07**



DESIGNED BY	DLM	CHECKED BY	DLM
DRAWN BY	MJV	DATE	JUNE, 2005
PROJECT	0301030310	CONTRACT	-
DRAWING	<b>C8</b>	REVISION	<b>0</b>

FILE S:\ENVR\03310\DWG\CIV\03310\_C8-SINGLE\_INLET.dwg 09/26/2005 10:31 AM CST