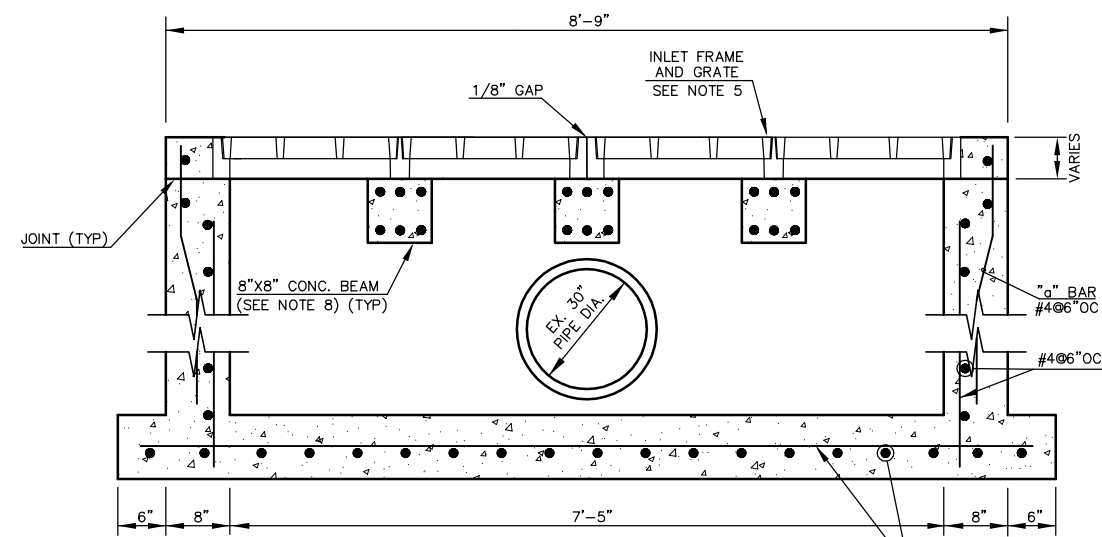


**SECTION C - C**

NO SCALE

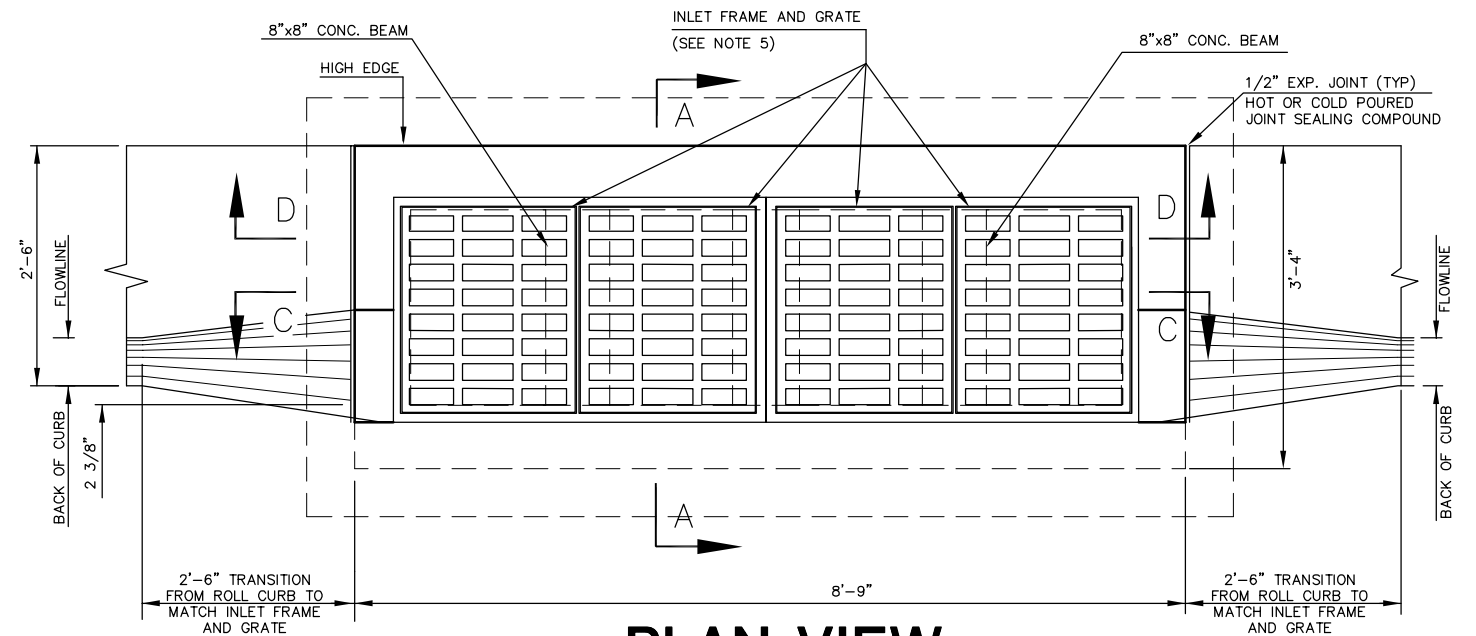


**SECTION D - D**

NO SCALE

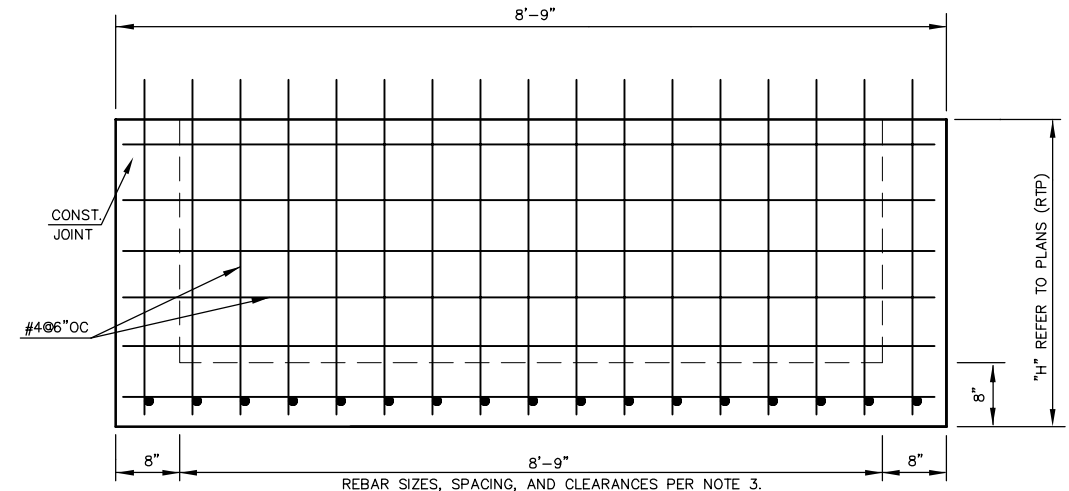
**GENERAL NOTES**

- USE THE CONCRETE MIX SPECIFIED FOR THE CITY OF WICHITA CONCRETE PAVEMENT THROUGHOUT. ALL EXPOSED EDGES SHALL BE FINISHED WITH AN EDGING TOOL.
- INLET INVERT SHALL BE SHAPED WITH 8 SACK MIX CONCRETE TO CREATE FLOW CHANNELS AND TO INCREASE HYDRAULIC EFFICIENCY SUCH THAT THE INLET WILL BE SELF-CLEANING BETWEEN ALL INLET AND/OR OUTLET PIPES.
- ALL BARS ARE #4 WITH 6" SPACING AND SHALL HAVE A MINIMUM CLEARANCE OF 1-1/2" UNLESS OTHERWISE NOTED ON THE PLANS.
- NO DEDUCTIONS WILL BE MADE IN PAY LENGTH OF CURB, GUTTER, OR CURB AND GUTTER THROUGH THE INLET AREA.
- USE DEETER 2098 INLET FRAME AND GRATES OR APPROVED EQUAL. INLET FRAMES TO BE PROOF LOAD TESTED TO 40,000 LBS ON UNSUPPORTED SIDE.
- REINFORCING BARS SHALL BE CUT OR BENT AROUND PIPES. NO DEDUCTION IN CONCRETE QUANTITIES SHALL BE MADE FOR PIPE OPENINGS.
- THE VANES OF THE GRATE SHALL BE ORIENTED TO INTERCEPT FLOW FROM THE DIRECTION SHOWN BY FLOW ARROWS ON THE PLANS.
- ALTERNATE: IN LIEU OF CONCRETE BEAM, INSTALL A GALVANIZED STEEL W8x24 BEAM 3' LONG. STEEL AND GALVANIZING SHALL MEET THE REQUIREMENTS OF ASTM A36 AND A123 RESPECTIVELY.



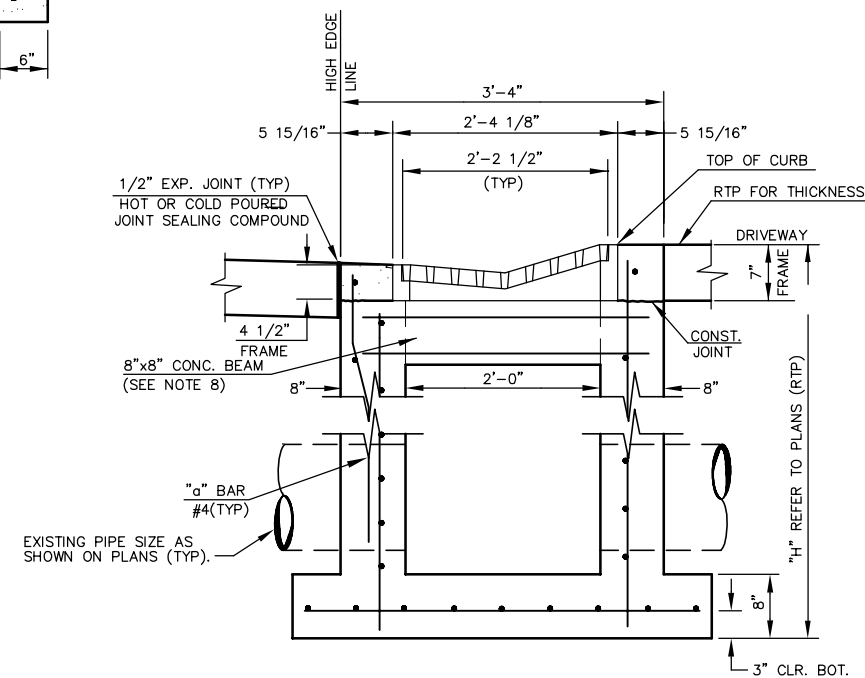
**PLAN VIEW**

NO SCALE



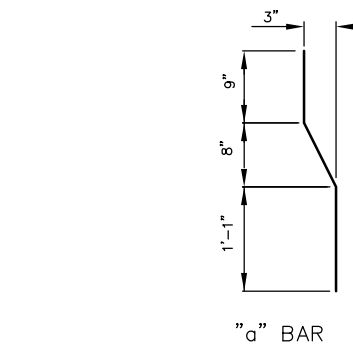
**REAR WALL**

NO SCALE



**SECTION A - A**

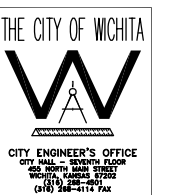
NO SCALE



**BENDING DIAGRAM**

NO SCALE

CONFORMING TO  
CONSTRUCTION RECORDS  
4/20/07



NO.	BY	DATE	DESCRIPTION
0	DLM	10/17/05	ISSUE FOR CONSTRUCTION
	MJV	4/26/07	CONFORMING TO CONSTRUCTION RECORDS DELETED AIR RELEASE VAULT, ADDED 1'-0" TO EAST SIDE OF VALVE VAULT.



CITY OF WICHITA, KANSAS  
15th STREET PUMP STATION  
AND FORCE MAIN

ROLLED CURB INLET TYPE I  
DETAILS

DESIGNED BY	DLM	CHECKED BY	DLM
DRAWN BY	MJV	DATE	JUNE, 2005
PROJECT	0301030310	CONTRACT	-
DRAWING	C9	REVISION	0

FILE: S:\ENVR\03310\WGD\CH\03310\_C9-ROLL\_CURB\_INLET.dwg 09/30/2005 09:33:19 AM CST