

LIGHT FIXTURE SCHEDULE

FIXT. LTR.	MANUFACTURER	CATALOG NUMBER	LAMPS		FIXT. VOLT.	FINISH	MOUNTING	WATT	REMARKS
			NO.	TYPE					
A	WILLIAMS	82-4-232-EB2-120	2	F032/835	120	WHITE	SUSPENDED - +8'-6" AFF	58	SIDE MOUNT TB STRIP
B	INFINITY	A75-60-A21F/MED-FF/MB-HORZ	1	60W A21 MED.	120	WHITE	RECESSED	60	SOFFIT LIGHTING WITH FRESNEL LENS & MICROBAFFLE & HORIZONTAL LAMP
C	HUBBELL	PGM-250P-128-1LP	1	250W PULSE START M.H. CLEAR MOGUL	120	BRONZE	WALL - +8'6" AFF TO BOTTOM	295	WALL PACK INSIDE BUILDING
D	INFINITY	A75-60-A21F/MED-FF/MB-HORZ-SCA25	1	60W A21 MED.	120	WHITE	RECESSED	60	SOFFIT LIGHTING WITH FRESNEL LENS & MICROBAFFLE & HORIZONTAL LAMP & 25' SLOPE CEILING ADAPTER.
EA	DUAL-LITE	LZ2	1	W/ UNIT	120	WHITE	WALL - 6" BELOW CEILING	12	EMERGENCY LIGHT WITH BATTERY, THERMOPLASTIC HOUSING
XA	DUAL-LITE	LXURWE	1	W/ UNIT	120	WHITE	WALL - ABOVE DOOR	4	LED EXIT LIGHT WITH BATTERY, THERMOPLASTIC HOUSING

① CIRCUIT FIXTURE AHEAD OF SWITCHING - FOR EMERGENCY ILLUMINATION.

LIGHTING FIXTURE SCHEDULE NOTES

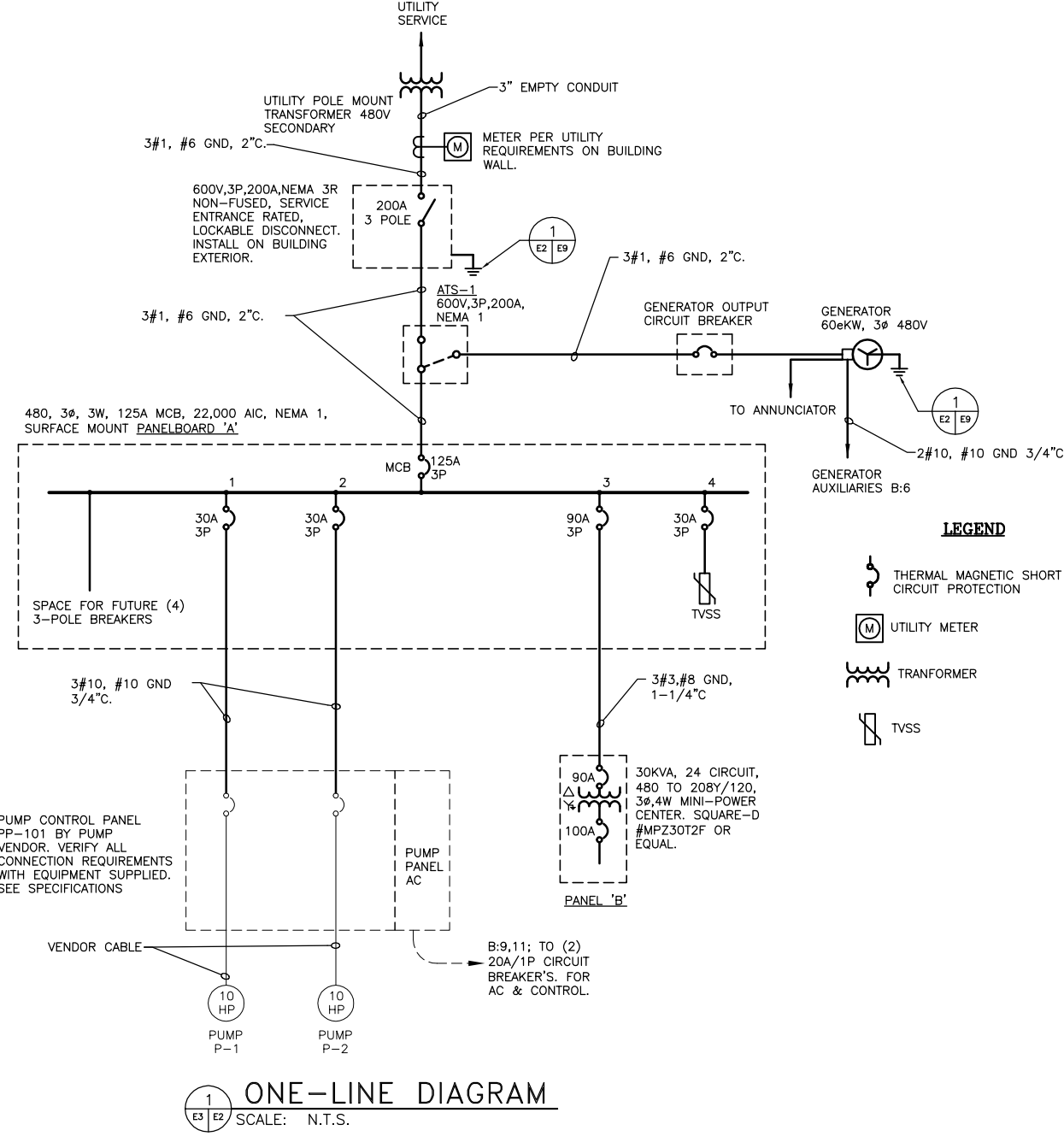
- ALL LIGHTING FIXTURES SHALL BE RATED FOR BUILDING VOLTAGE. CONTRACTOR MUST VERIFY ALL LOCATIONS.
- UNLESS INDICATED OTHERWISE, ALL FLUORESCENT LIGHT FIXTURE BALLASTS SHALL BE ELECTRONIC OCTRON "T8" (# AS SHOWN ON SCHEDULE) AS MANUFACTURED BY: MOTOROLA, ADVANCE OR MAGNETEK. FLUORESCENT LAMPS SHALL HAVE A 4100K COLOR AND 70 COLOR RENDERING INDEX.
- ALL INCANDESCENT LAMPS SHALL BE RATED 130 VOLT A.C.
- ELECTRICAL CONTRACTOR SHALL CHECK AND COORDINATE ALL LIGHTING FIXTURE CATALOG NUMBERS WITH THE INTENT OF FIXTURE DESCRIPTIONS, LISTED ACCESSORIES AND TYPE OF INSTALLATION.
- ELECTRICAL CONTRACTOR SHALL PROVIDE EACH LIGHTING FIXTURE COMPLETE WITH PLASTER FRAMES AND ALL OTHER INSTALLATION AND HANGING HARDWARE AS REQUIRED FOR A COMPLETE AND FINISHED INSTALLATION AT EACH FIXTURE LOCATION.
- ALL FIXTURES SHALL BE "U.L." LABELED. ALL LIGHTING FIXTURES EXPOSED TO WEATHER OR MOISTURE SHALL BEAR U.L. "WET LOCATION" LABEL, AND LIGHTING FIXTURES EXPOSED TO DAMPNESS SHALL BEAR U.L. "DAMP LOCATION" LABEL. ALL EXPLOSION PROOF FIXTURES SHALL BE RATED AND UL LISTED FOR THE CLASSIFICATIONS SHOWN ON THE DRAWING.
- REFER TO APPLICABLE SECTIONS OF THE SPECIFICATIONS FOR ADDITIONAL REQUIREMENTS FOR LIGHTING FIXTURES.
- VERIFY ALL LIGHTING FIXTURE LOCATIONS, FINISHES, VOLTAGE AND CEILING TYPES WITH FIELD ENGINEER PRIOR TO INSTALLING.
- ELECTRICAL CONTRACTOR TO FIELD ADJUST AIMING PATTERN OF EXTERIOR LIGHTS AT NIGHT SESSION. OWNER & ENGINEER TO DETERMINE TIME & DATE.
- SURFACE MOUNTED FIXTURES MOUNTED TO A "T" BAR CEILING GRID SHALL BE FASTENED TO GRID IN FOUR PLACES TO INSURE RIGID SUPPORT.
- ALL HID FIXTURES SHALL BE "BURNED-IN" AS PER LAMP MANUFACTURER'S RECOMMENDATIONS TO INSURE PROPER LAMP LIFE.
- INSTALLATION ELEVATION SHOWN ON ARE FROM ELEVATION 100 TO CENTER OF OUTLET BOX.
- SUBMIT LIST OF LAMPS FOR ENGINEER'S APPROVAL WITH TYPE OF LAMP AND MANUFACTURER TO BE USED FOR EACH FIXTURE LISTED PRIOR TO ORDERING. LAMP TO BE MATCHED WITH FIXTURE.

NO.	DESCRIPTION	QTY	UNIT	NO.	DESCRIPTION	QTY	UNIT
1
2
3
4
5
6
7
8
9
10
11
12
13
14
15
16
17
18

NO.	DESCRIPTION	QTY	UNIT
1
2
3
4
5
6
7
8
9
10
11
12
13
14
15
16
17
18

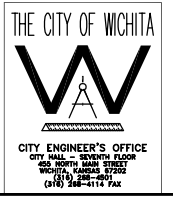
GENERAL NOTES

- LABEL ALL PANELBOARDS AND CONTROL PANELS PER DETAIL 2 ON SHEET E9.
- LABEL ALL SWITCHES PER DETAIL 5 ON SHEET E9.



EQUIPMENT CONNECTION SCHEDULE															
NO.	DESCRIPTION	QTY	UNIT	NO.	DESCRIPTION	QTY	UNIT	NO.	DESCRIPTION	QTY	UNIT	NO.	DESCRIPTION	QTY	UNIT
1
2
3
4
5
6
7
8
9
10
11
12
13
14
15

CONFORMING TO
CONSTRUCTION RECORDS
4/20/07



NO.	BY	DATE	DESCRIPTION
0	DLM	10/17/05	ISSUE FOR CONSTRUCTION
	MJV	4/28/07	CONFORMING TO CONSTRUCTION RECORDS DELETED AIR RELEASE VAULT, ADDED 1'-0" TO EAST SIDE OF VALVE VAULT.

MKEC
ENGINEERING CONSULTANTS

CITY OF WICHITA

CITY OF WICHITA, KANSAS
15th STREET PUMP STATION AND FORCE MAIN

ELECTRICAL SCHEDULES & ONE-LINE

DESIGNED BY	BH	CHECKED BY	SLA
DRAWN BY	BH	DATE	JUNE, 2005
PROJECT	0301030310		
DRAWING	E2		
REVISION	0		