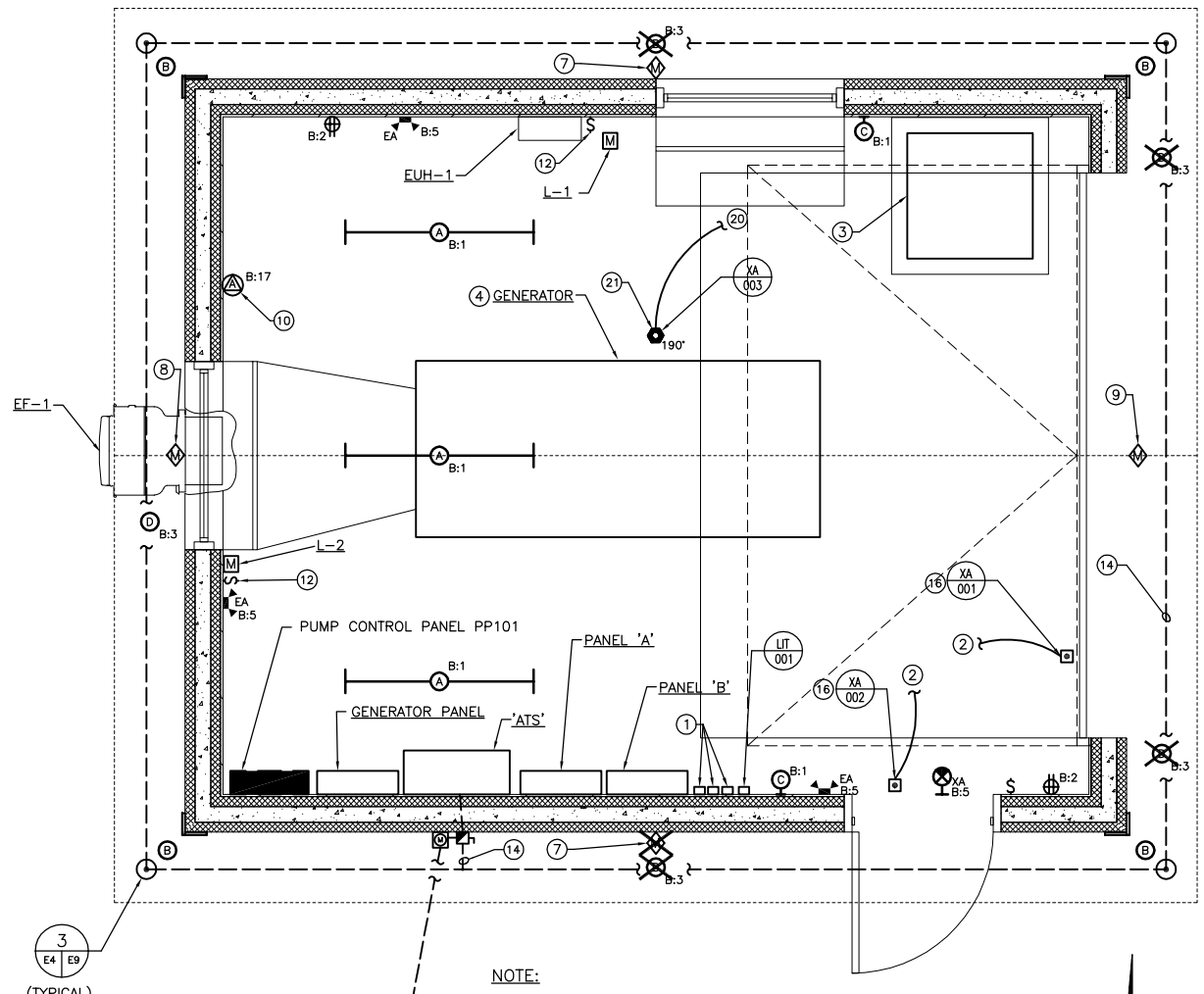


18 17 16 15 14 13 12 11 10 9 8 7 6 5 4 3 2 1



BUILDING ELECTRICAL PLAN



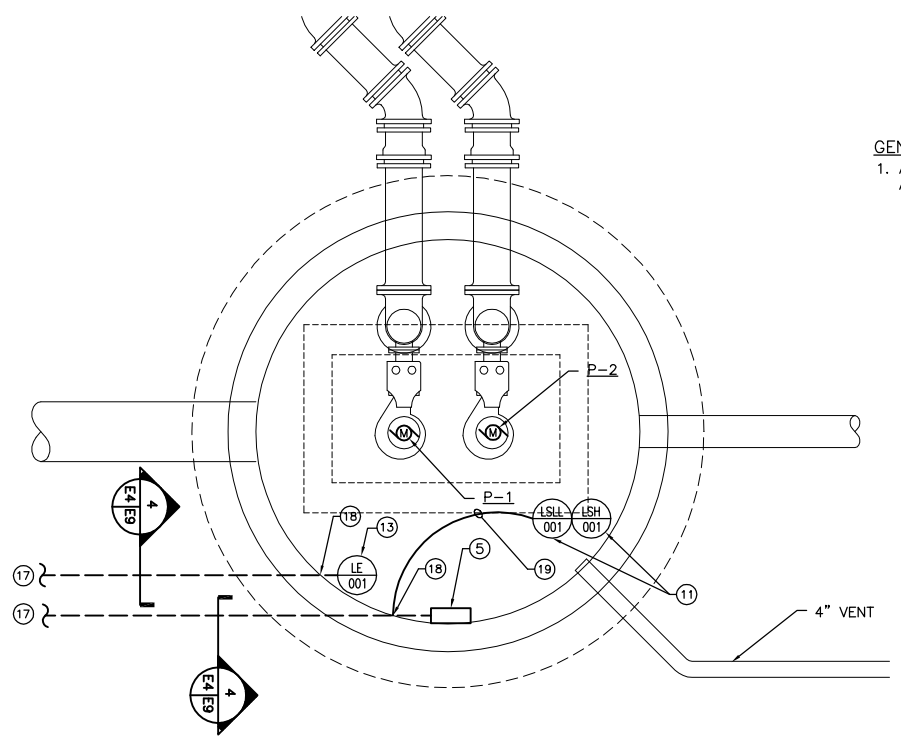
NOTE:

ALL DEVICES AGAINST BUILDING WALLS SHALL BE MOUNTED ON STRUT FRAMES BOLTED TO THE FLOOR IN (4) PLACES. STRUT SHALL BE 316 STAINLESS STEEL, 12 GA., 1-5/8"X1-5/8" WITH SLOTS FOR HARDWARE, SIDE-BY-SIDE B-LINE #B22B-SH-SS6 OR EQUAL. SEE DETAIL 6 ON SHEET E9 FOR INSTALLATION.

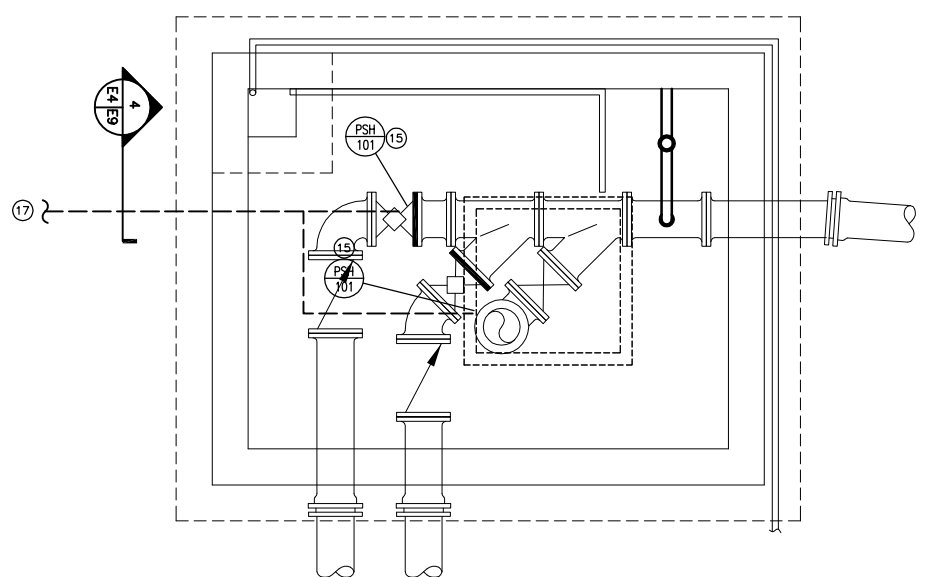
KEYED NOTES

- ~~1. 030 DETECTION RESERVE DELETED~~
- 2. CONTACT WIRES FROM MAGNETIC DOOR CONTACT TO PLC-1. SEE SHEET E6 AND SPECIFICATIONS.
- 3. PLC CABINET. SEE DETAILS 1, 2, AND 3 ON SHEET E8. INSTALL ON 3-1/2" HIGH CONCRETE HOUSEKEEPING PAD, 4" LARGER THAN CABINET IN EACH DIRECTION.
- 4. INSTALL GENERATOR ON HOUSEKEEPING PAD. SEE STRUCTURAL DRAWINGS.
- ~~5. COMBUSTION GAS DETECTOR MOUNTED ON WET WELL WALL. SEE DETAIL 3 ON SHEET E7. DELETED~~
- 6. TO UTILITY TRANSFORMER ON POLE. SEE SHEET E2.
- 7. MOTION DETECTOR/PHOTOCELL FOR EXTERIOR LIGHTING CONTROL. MOUNT AT +9'-0" AFG BELOW SOFFIT. MOUNT SUCH THAT ENTIRE SIDE OF BUILDING IS WITHIN COVERAGE PATTERN OF DETECTOR. WIRE TO BUILDING LIGHTING ON SIDE OF BUILDING WHERE DETECTOR IS INSTALLED PER MANUFACTURER'S INSTRUCTIONS.
- 8. MOTION DETECTOR/PHOTOCELL FOR EXTERIOR LIGHTING CONTROL. MOUNT BELOW EXHAUST FAN. MOUNT SUCH THAT ENTIRE SIDE OF BUILDING IS WITHIN COVERAGE PATTERN OF DETECTOR. WIRE TO BUILDING LIGHTING ON SIDE OF BUILDING WHERE DETECTOR IS INSTALLED PER MANUFACTURER'S INSTRUCTIONS.
- 9. MOTION DETECTOR/PHOTOCELL FOR EXTERIOR LIGHTING CONTROL. MOUNT BELOW LOUVER. MOUNT SUCH THAT ENTIRE SIDE OF BUILDING IS WITHIN COVERAGE PATTERN OF DETECTOR. WIRE TO BUILDING LIGHTING ON SIDE OF BUILDING WHERE DETECTOR IS INSTALLED PER MANUFACTURER'S INSTRUCTIONS.
- 10. 250V, 30A, 2P, 3W, NEMA 6-30R RECEPTACLE.

- 11. HIGH LEVEL AND LOW LOW LEVEL FLOAT SWITCHES. SEE INSTALLATION DETAIL 1 ON SHEET E10.
- 12. 15A, 125V, 1P, 3W, HORSEPOWER RATED TOGGLE SWITCH FOR LOUVER DISCONNECT. MOUNT ON WALL NEXT TO LOUVER.
- 13. PAC CONTROLLER. SEE DETAIL 2 ON SHEET E7. CONTROLLER INTERFACE MOUNTED ON BUILDING WALL. PRESSURE TUBING SUPPLIED WITH CONTROLLER (ORDER LENGTH AS REQUIRED). INSTALL TUBING IN CONDUIT UNDERGROUND. SEE WIRING DIAGRAM DETAIL 6 ON SHEET E10.
- 14. #3/0 BARE COPPER GROUNDING ELECTRODE CONDUCTOR (TYPICAL.)
- 15. SEE INSTALLATION DETAIL 4 ON SHEET E7.
- 16. INSTALL DOOR CONTACT ON DOOR PER MANUFACTURER'S INSTRUCTIONS.
- 17. (1) 3/4" CONDUIT WITH REQUIRED CONDUCTORS UNDERGROUND TO BUILDING.
- 18. INSTALL SEAL IN CONDUIT MAXIMUM 10' FROM WALL PENETRATION.
- 19. FLOAT SWITCH CABLE. SEE DETAIL 1 ON SHEET E10.
- 20. CONTACT WIRES FROM HEAT DETECTOR RELAY TO PLC-1. SEE SHEET E6 AND SPECIFICATIONS.
- 21. HEAT DETECTOR WITH ONE NORMALLY OPEN CONTACT. NON-ADDRESSABLE. FIXED TEMPERATURE ALARM OF 190°F. NO RATE-OF-RISE ALARM. SIMPLEX GRINNELL MODEL #504 (OR ENGINEER APPROVED EQUAL). SURFACE MOUNT DETECTOR ON ROOF TRUSS.



WETWELL ELECTRICAL PLAN



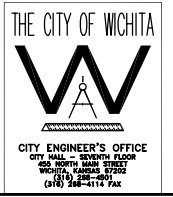
VALVE VAULT ELECTRICAL PLAN



GENERAL NOTES

1. ALL WIRING TO BE INSTALLED IN CONDUIT. NO EXPOSED WIRING WILL BE ACCEPTED.

CONFORMING TO
CONSTRUCTION RECORDS
4/20/07



NO.	BY	DATE	DESCRIPTION
0	DLM	10/17/05	ISSUE FOR CONSTRUCTION
	MJV	4/26/07	CONFORMING TO CONSTRUCTION RECORDS DELETED NOTES 1 & 5 DELETED (1) MOTION DETECTOR & (2) FIXTURES. RELOCATED (2) SOFFIT LIGHTS & ADDED (2) SOFFIT LIGHTS.



CITY OF WICHITA, KANSAS
15th STREET PUMP STATION
AND FORCE MAIN

ELECTRICAL PLANS

DESIGNED BY	CHKD BY	SLA
	BH	
DRAWN BY	DATE	JUNE, 2005
	BH	
PROJECT	CONTRACT	
0301030310		
DRAWING	REVISION	
E4	-	0

FILE S:\ENVR\03310\WGO\Elec\03310-E2.dwg 09/12/2005 12:04:49 PM CST