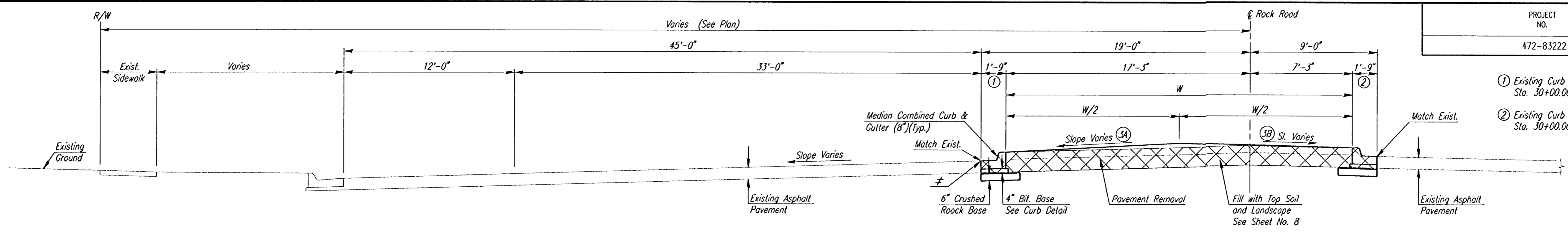
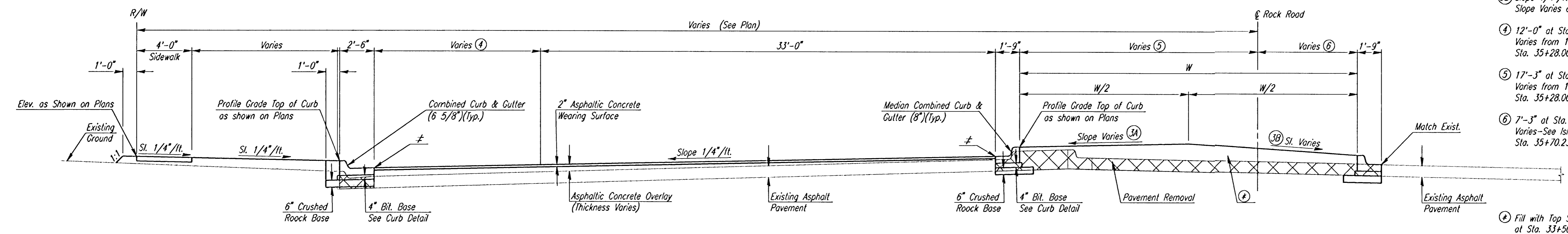


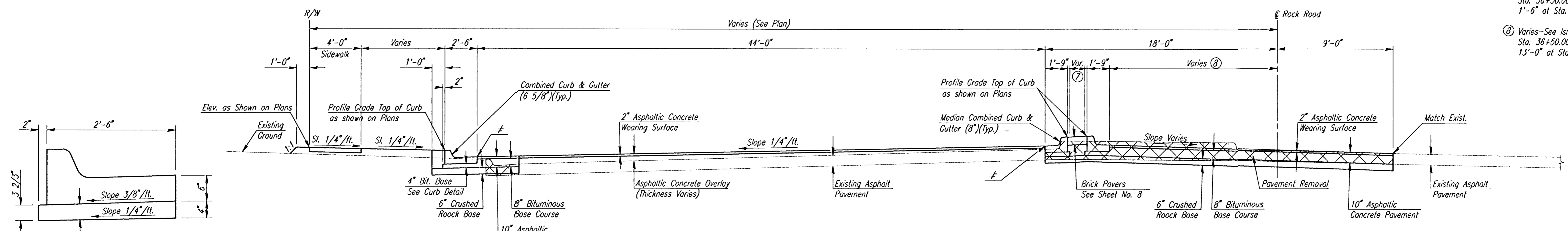
PROJECT NO.	SHEET NO.	TOTAL SHEETS
472-83222	3	32



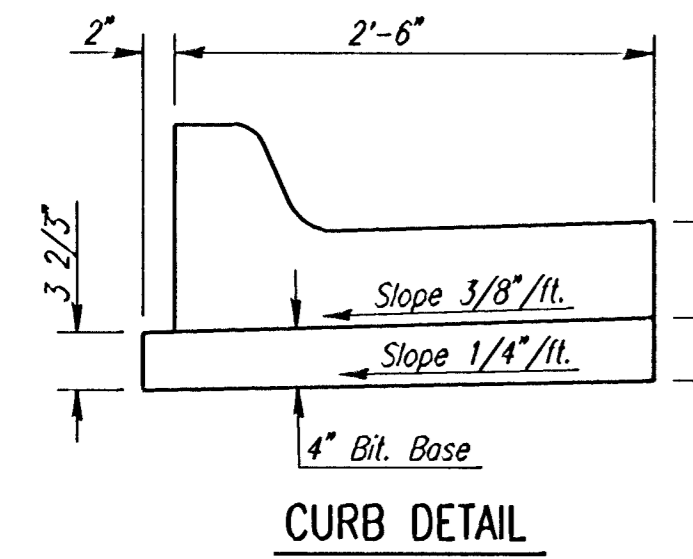
TYPICAL SECTION
STA. 30+00.00 TO STA. 33+50.00



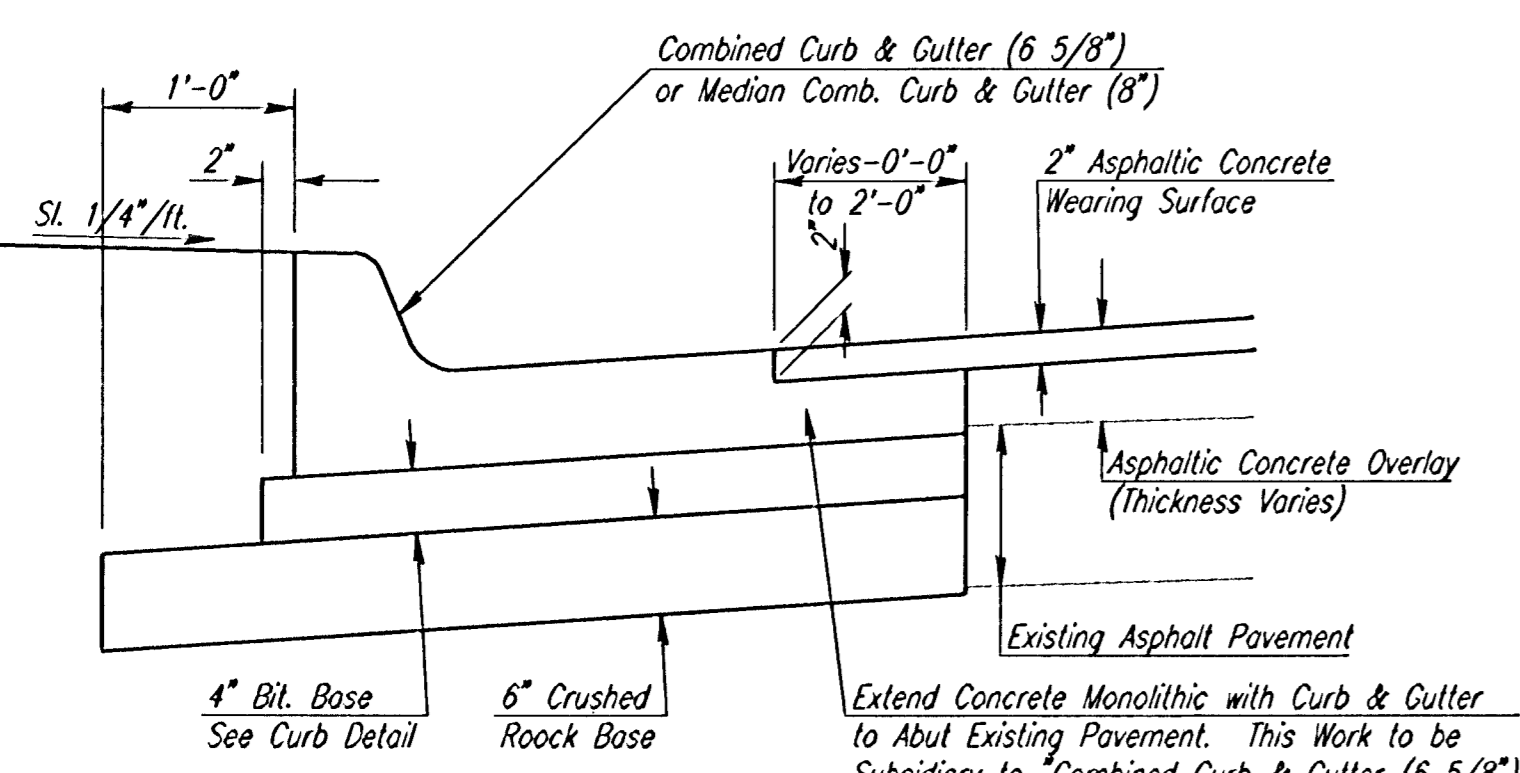
TYPICAL SECTION
STA. 33+50.00 TO STA. 36+55.00



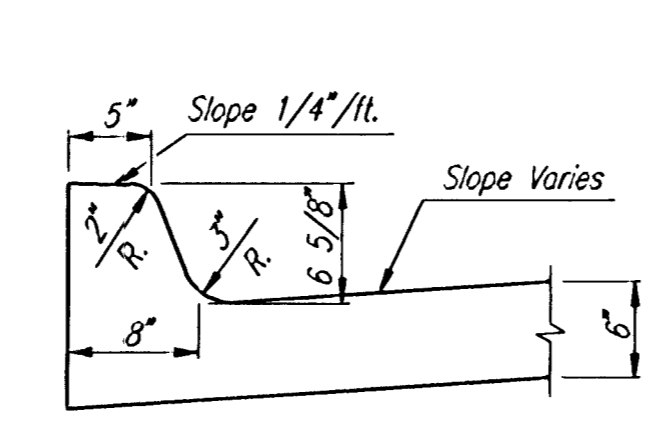
TYPICAL SECTION
STA. 36+55.00 TO STA. 38+64.00



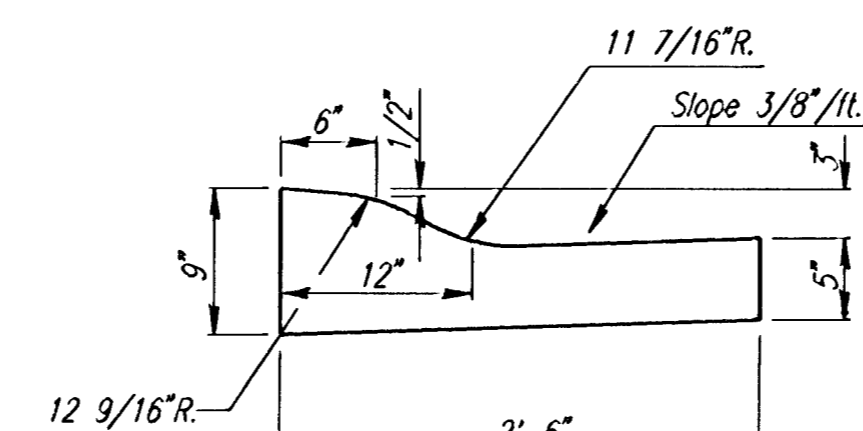
CURB DETAIL



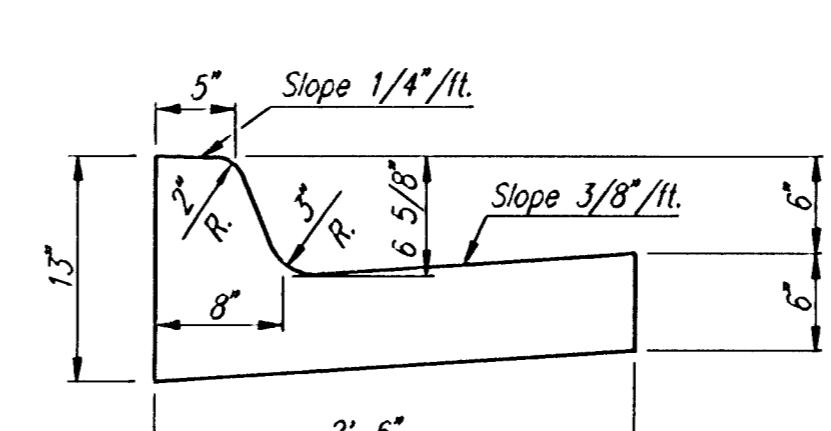
DETAIL A



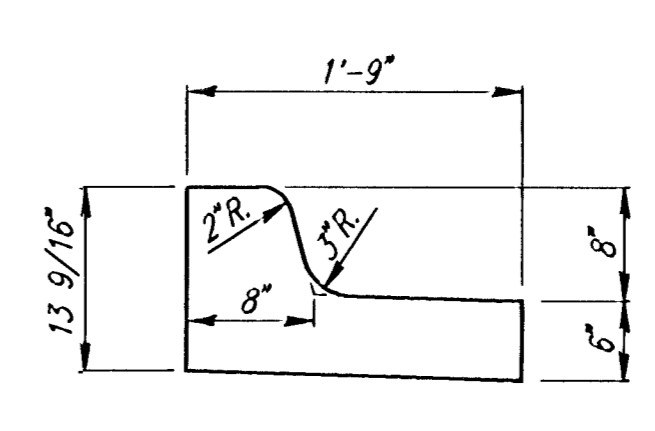
MONOLITHIC COMBINED CURB & GUTTER
(6 5/8")



STANDARD COMBINED CURB & GUTTER
(3 5/8" Roll)



STANDARD COMBINED CURB & GUTTER
(6 5/8")



MEDIAN COMBINED CURB & GUTTER
(8")

GENERAL NOTES

FABRIC BASE REINFORCEMENT SHALL BE BX1100 BY TENSAR CORP. OR LB0201 BY TENAX CORPORATION OR APPROVED EQUAL. FABRIC BASE REINFORCEMENT SHALL BE INSTALLED IN ACCORDANCE WITH MANUFACTURERS RECOMMENDATIONS.

ROCK BASE IS TO BE COMPACTED AND SMOOTHED WITH A STEEL FACED ROLLER PRIOR TO PLACEMENT OF ASPHALT. TACK COAT SHALL NOT BE APPLIED TO ROCK BASE.

A TACK COAT OF EMULSIFIED ASPHALT (SC-1H OR CSS-1H) SHALL BE APPLIED AT AN APPROXIMATE RATE OF 0.05 GALLONS PER SQUARE YARD BETWEEN EACH LIFT OF ASPHALTIC MATERIAL.

BITUMINOUS BASE AND ASPHALTIC CONCRETE WEARING SURFACE SHALL BE PLACED WITH A LAYDOWN MACHINE HAVING AUTOMATIC CONTROLS FOR LINE AND GRADE.

CONSTRUCTION JOINTS IN EACH LIFT SHALL BE STAGGERED A MINIMUM DISTANCE OF (1) FOOT FROM JOINTS IN PRECEDING LIFTS AND PLACED SO THAT A JOINT WILL BE CONSTRUCTED ON THE CENTERLINE OF THE TOP LIFT.

≠ See Detail A where the Dimension Between the Proposed High Edge and the Existing Pavement Varies Between 0'-0" to 2'-0".

- ① Existing Curb & Gutter at Sta. 30+00.00 to Sta. 32+92.10.
- ② Existing Curb & Gutter at Sta. 30+00.00 to Sta. 30+92.43.

- ③A Slope Varies at Sta. 30+00 to Sta. 33+97
Slope 1/4"/ft. at Sta. 33+97 to Sta. 36+55
- ③B Slope 1/4"/ft. at Sta. 30+00 to Sta. 33+97
Slope Varies at Sta. 33+97 to Sta. 36+55
- ④ 12'-0" at Sta. 33+50.00 to Sta. 35+28.00
Varies from 12'-0" to 11'-0" at Sta. 35+28.00 to Sta. 36+55.00
- ⑤ 17'-3" at Sta. 33+50.00 to Sta. 35+28.00
Varies from 17'-3" to 16'-3" at Sta. 35+28.00 to Sta. 36+55.00
- ⑥ 7'-3" at Sta. 33+50.00 to Sta. 35+70.23
Varies-See Island Detail, Sheet No. 8, at Sta. 35+70.23 to Sta. 36+55.00

④ Fill with Top Soil and Landscape, See Sheet No. 8, at Sta. 33+50.00 to Sta. 35+88.23
7 1/2" Concrete at Sta. 35+88.23 to Sta. 35+70.23
Brick Pavers at Sta. 35+70.23 to Sta. 36+55.00

⑦ Varies-See Island Detail, Sheet No. 8, at Sta. 36+50.00 to Sta. 36+83.00
1'-6" at Sta. 36+83.00 to Sta. 38+64.00

⑧ Varies-See Island Detail, See No. 8, at Sta. 36+50.00 to Sta. 36+83.00
13'-0" at Sta. 36+83.00 to Sta. 38+64.00

No.	Revisions	By	Date
-----	-----------	----	------

CITY OF WICHITA, KANSAS
TYPICAL SECTIONS

Professional Engineering Consultants, P.A.
303 S. TOPEKA • WICHITA, KANSAS 67202
316-262-2691 • FAX 316-262-3003

Designed by	BER, PMM	Checked by	
Drawn by	BJS	Date	APRIL 2000
		Job No.	99687-1

1: 1999/99687/001/typsec.dgn
 Date Plotted: June 27, 2000
 Deliver to: Penni Moore